

# B

---

## LOGAN BUILDING

---

500 Union St.  
Seattle, WA



# LOGAN BUILDING

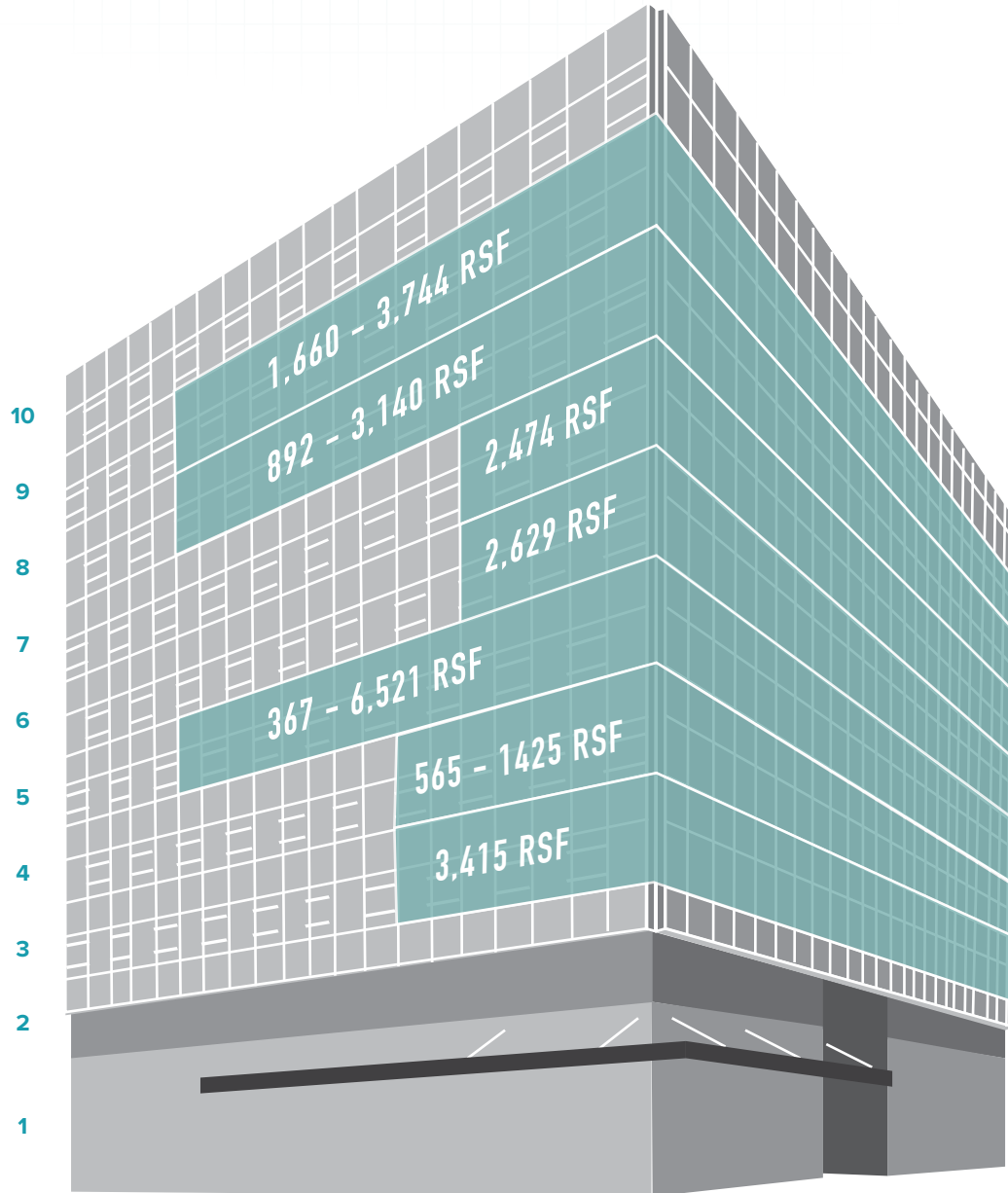
## BUILDING HIGHLIGHTS

<b>PROPERTY ADDRESS</b>	500 Union St. Seattle, WA
<b>RSF</b>	118,448
<b>FLOORS</b>	10-story office building
<b>YEAR BUILT</b>	1959 (Renovated 2019)
<b>ON-SITE AMENITIES</b>	Conference center, building bike storage and shower facility. Close proximity to Cedar Hall
<b>INTERNET PROVIDERS</b>	Integra, CenturyLink, Comcast, TW Telecom & Global Capacity/Megapath
<b>PARKING</b>	Ability to provide parking at USBC next door
<b>OWNERSHIP/ PROPERTY MANAGEMENT</b>	Unico Properties

The information contained herein has been given to us by the owner or sources that we deem reliable. We have no reason to doubt its accuracy, but we do not guarantee it. Prospective tenants should carefully verify all information contained herein.



# LOGAN BUILDING



## AVAILABLE SPACE

Floor / Suite	RSF	Available	Comments
▶ <a href="#">3 / 325</a>	3,415	Now	Rent ready. Kitchenette and private offices. Fully furnished.
▶ <a href="#">4 / 400</a>	1,224	Now	Three private offices and kitchen.
▶ <a href="#">4 / 407</a>	565	Now	Private office.
▶ <a href="#">4 / 435</a>	1,425	Now	Conference rooms, private offices, reception and kitchenette.
▶ <a href="#">5 / 503</a>	1,608	Now	Can be combined with Suite 510 for 2,244 RSF.
▶ <a href="#">5 / 510</a>	637	Now	Can be combined with Suite 503 for 2,244 RSF.
▶ <a href="#">5 / 520</a>	3,601	Now	Interior conference rooms and private offices. Can be combined with Suite 545.
▶ <a href="#">5 / 545</a>	2,922	Now	Can be combined with Suite 520.
▶ <a href="#">6 / 620</a>	2,629	Now	Northwest corner suite, conference rooms, reception and kitchenette.
▶ <a href="#">7 / 710</a>	2,474	1/1/2025	Rent ready. Open work area, conference room, private offices and kitchenette.
▶ <a href="#">8 / 800</a>	2,827	2/1/2025	Private offices, conference rooms, reception and kitchenette.
▶ <a href="#">8 / 801</a>	3,140	Now	Private offices.
▶ <a href="#">8 / 805</a>	892	Now	Private office and kitchenette.
▶ <a href="#">8 / 810</a>	944	Now	Three offices and kitchen.
▶ <a href="#">9 / 927</a>	1,660	2/1/2025	Law firm space, open work area, conference room, private offices and kitchenette.
▶ <a href="#">9 / 940</a>	2,908	Now	Private offices, conference room, open work areas and kitchenette
▶ <a href="#">9 / 950</a>	3,744	Now	Rent ready. Private offices, open work area, kitchenette and conference room.

## NEARBY AMENITIES

### RESTAURANTS

1. Yard House
2. Shuckers Restaurant
3. The Capital Grille
4. Wild Ginger
5. Blue Water Taco Grill
6. Il Bistro
7. The Pink Door
8. Lowell's Restaurant
9. Elephant & Castle
10. Redtrees Restaurant & Bar
11. Andaluca Restaurant
12. Cafe Champagne
13. Daniel's Broiler Downtown
14. Cortina
15. Tidal+
16. Cinque Terra Ristorante
17. Lola
18. Din Tai Fung
19. Rider
20. Fogo de Chao
21. Mendocino Farms
22. Alder & Ash
23. The George
24. Mr. West Cafe Bar
25. The Fonte Bar
26. Purple Cafe and Wine Bar

### ENTERTAINMENT

1. ACT Theater
2. Regal Meridian & 4DX
3. AMC Theaters
4. Paramount Theatre
5. Museum of Illusions / 5th Ave Theatre

### HOTELS

1. Lotte Hotel Seattle
2. Renaissance Hotel
3. Motif Seattle
4. Sheraton Grand Seattle
5. Grand Hyatt Seattle
6. Hotel Theodore
7. Hilton Seattle
8. Hyatt at Olive 8
9. Fairmont Olympic
10. W Seattle
11. Crowne Plaza Seattle Downtown
12. Kimpton Hotel Monaco Seattle

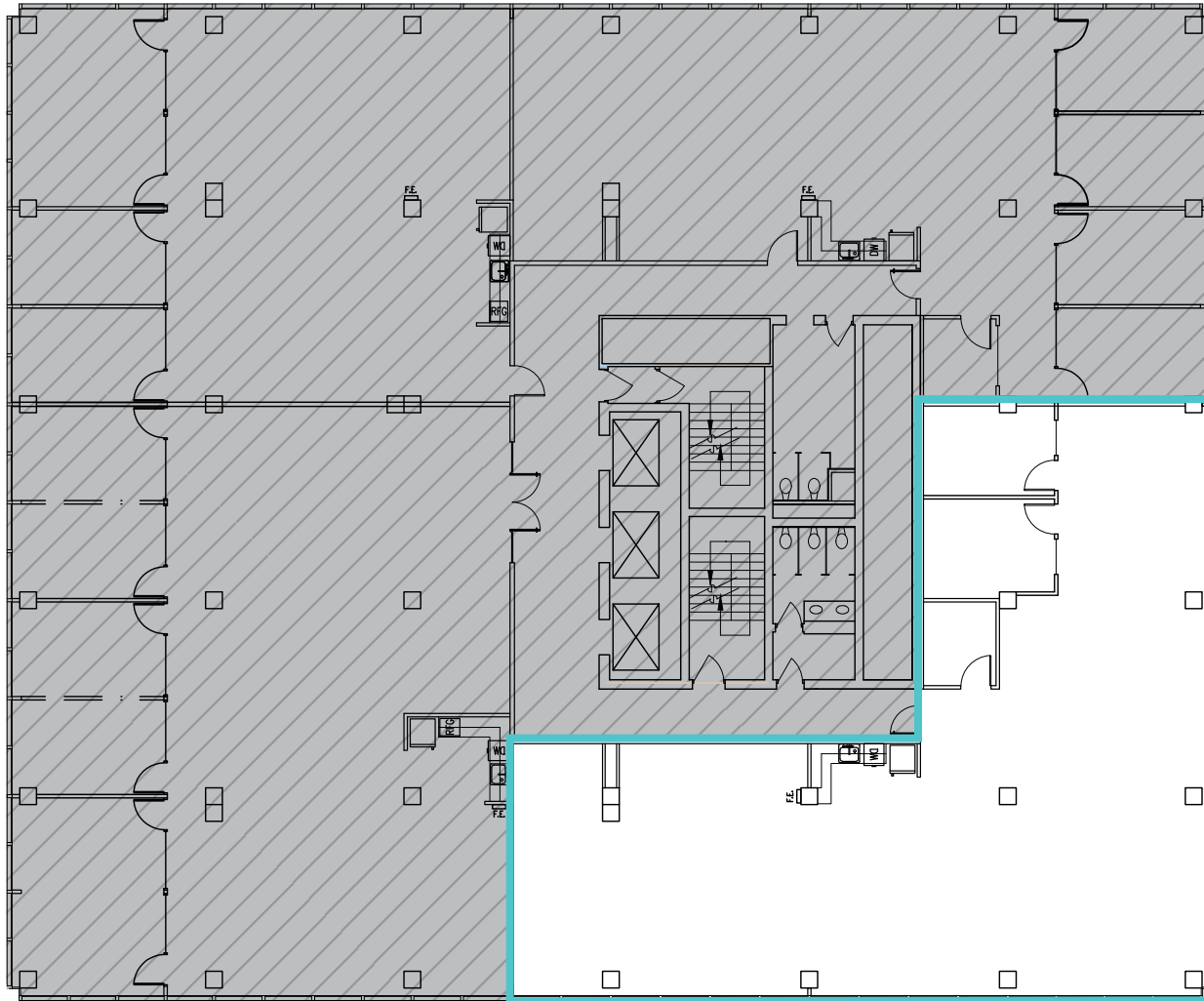
### LANDMARKS

1. Seattle Public Library
2. Seattle Art Museum
3. Sky View Observatory
4. Seattle Convention Center
5. Pike Place Market
6. Seattle Aquarium

### RETAIL / FITNESS

1. Westlake Center
2. Nordstrom
3. Pacific Place
4. Washington Athletic Club
5. RowdyBox
6. Equinox Rainier Square - Coming Soon

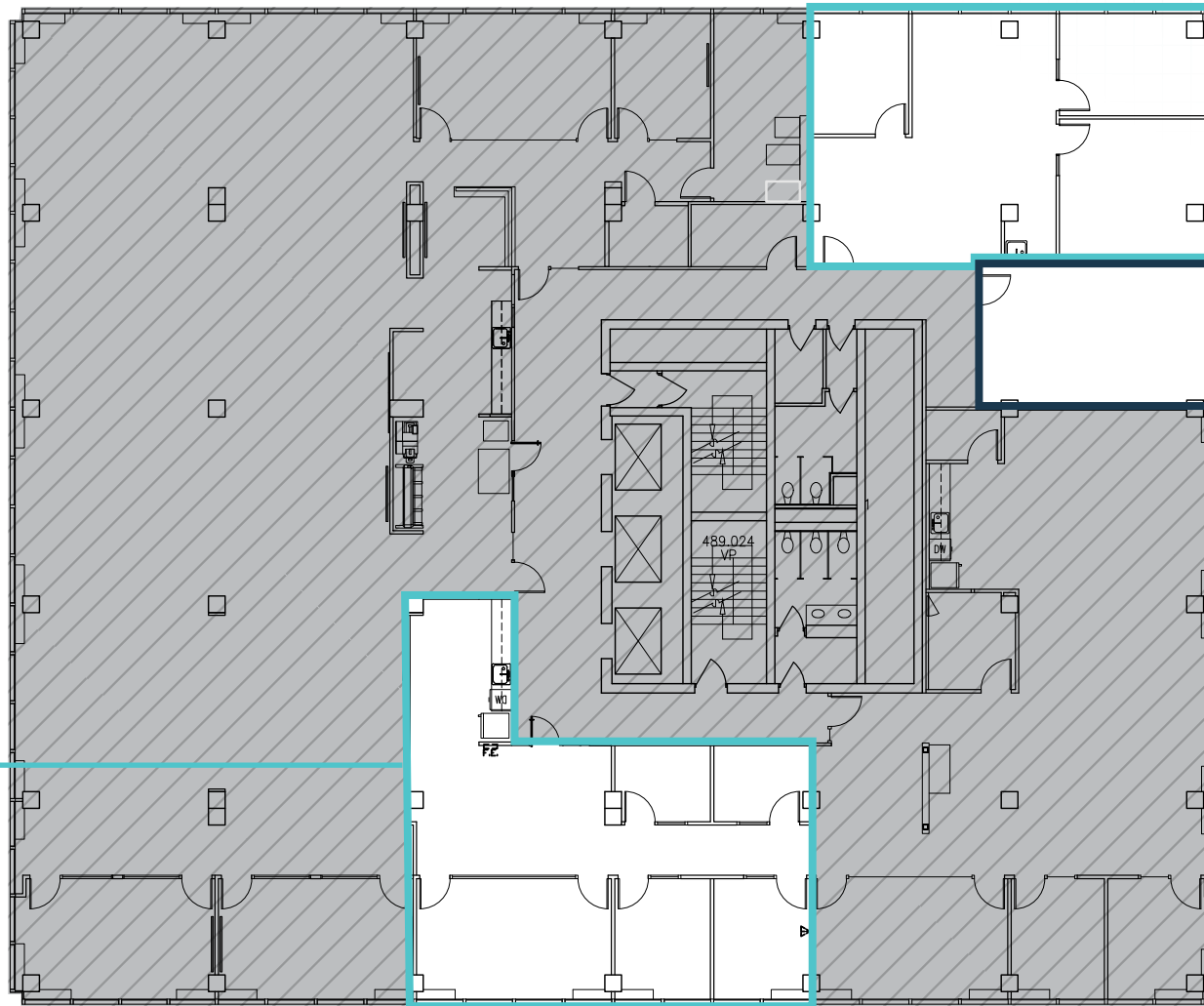




▶ **Suite 325**

3,415 RSF  
Rent ready  
Kitchenette  
Private offices  
Fully furnished  
Available Now





### Suite 400 ▶

1,224 RSF  
Three private offices  
Kitchen  
Available now

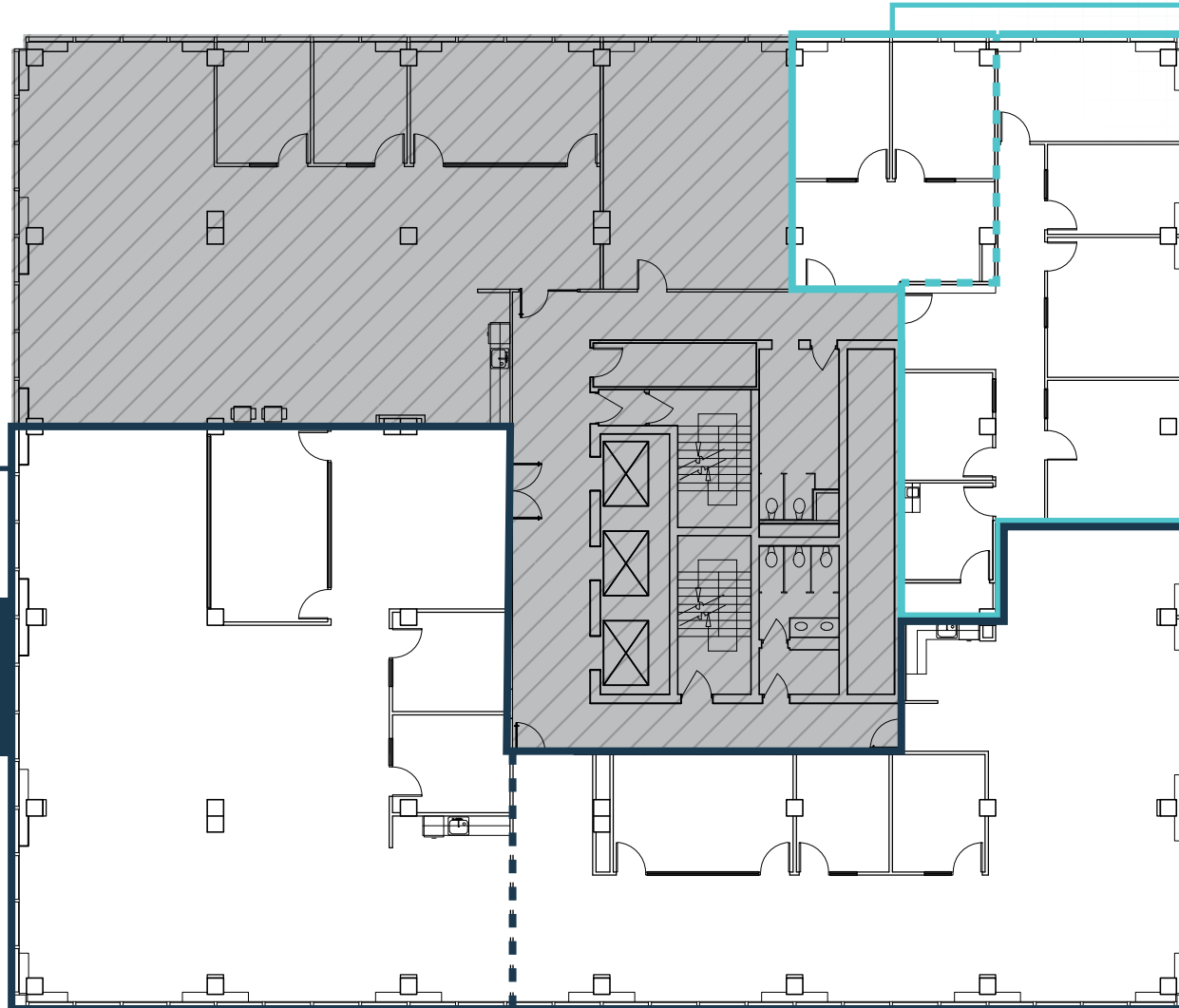
### Suite 407 ▶

565 RSF  
Private office  
Available now

### Suite 435 ▶

1,425 RSF  
Conference room  
Kitchenette  
Private offices  
Available now





## Suite 520 ▶

3,601 RSF  
Available now

Suites 520 & 545 can  
be combined for a  
total of **6,521 RSF**

## Suite 510 ▶

637 RSF  
Available now

Suites 503 & 510 can  
be combined for a  
total of **2,244 RSF**

## Suite 503 ▶

1,608 RSF  
Available now

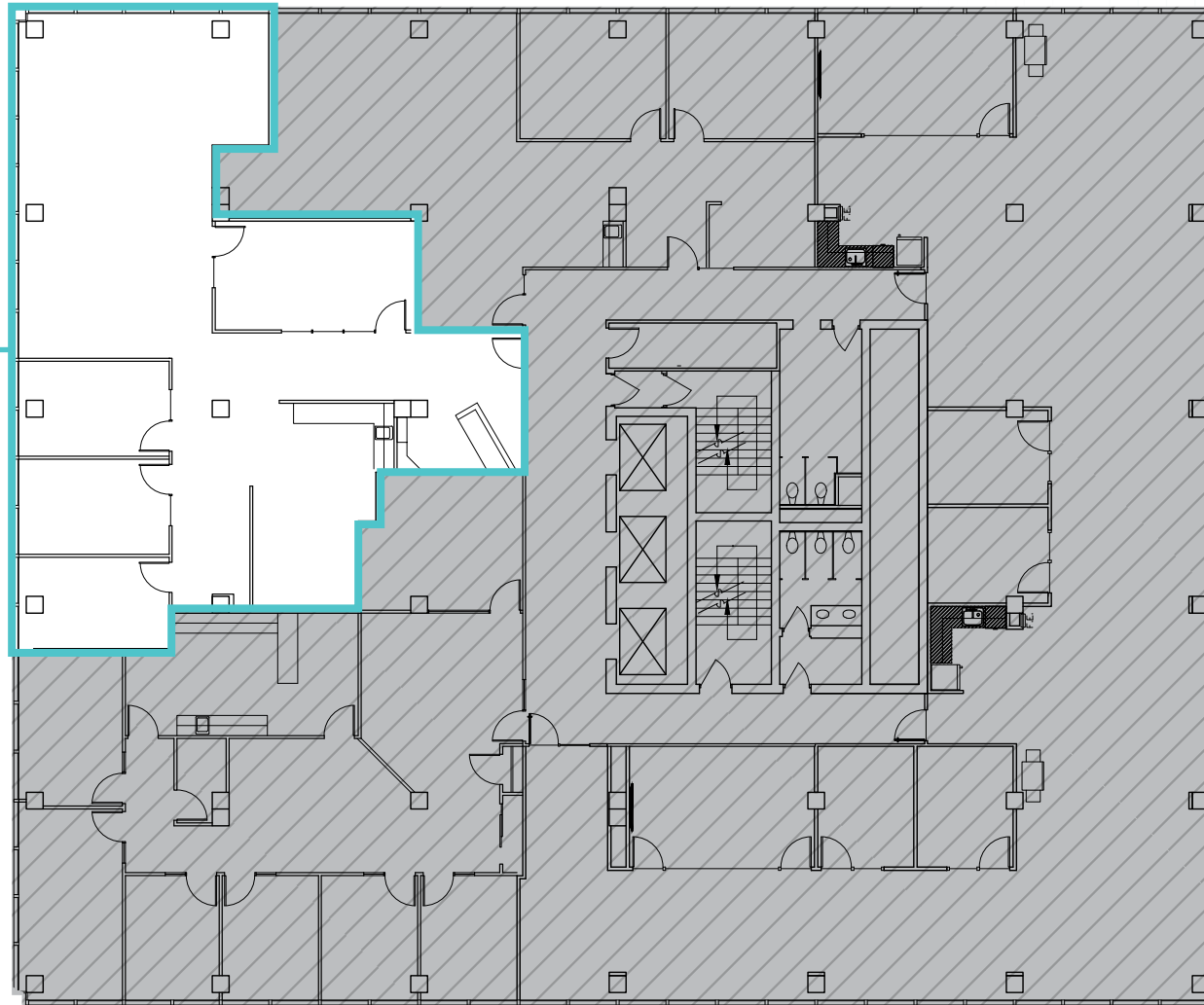
## Suite 545 ▶

2,922 RSF  
Available now

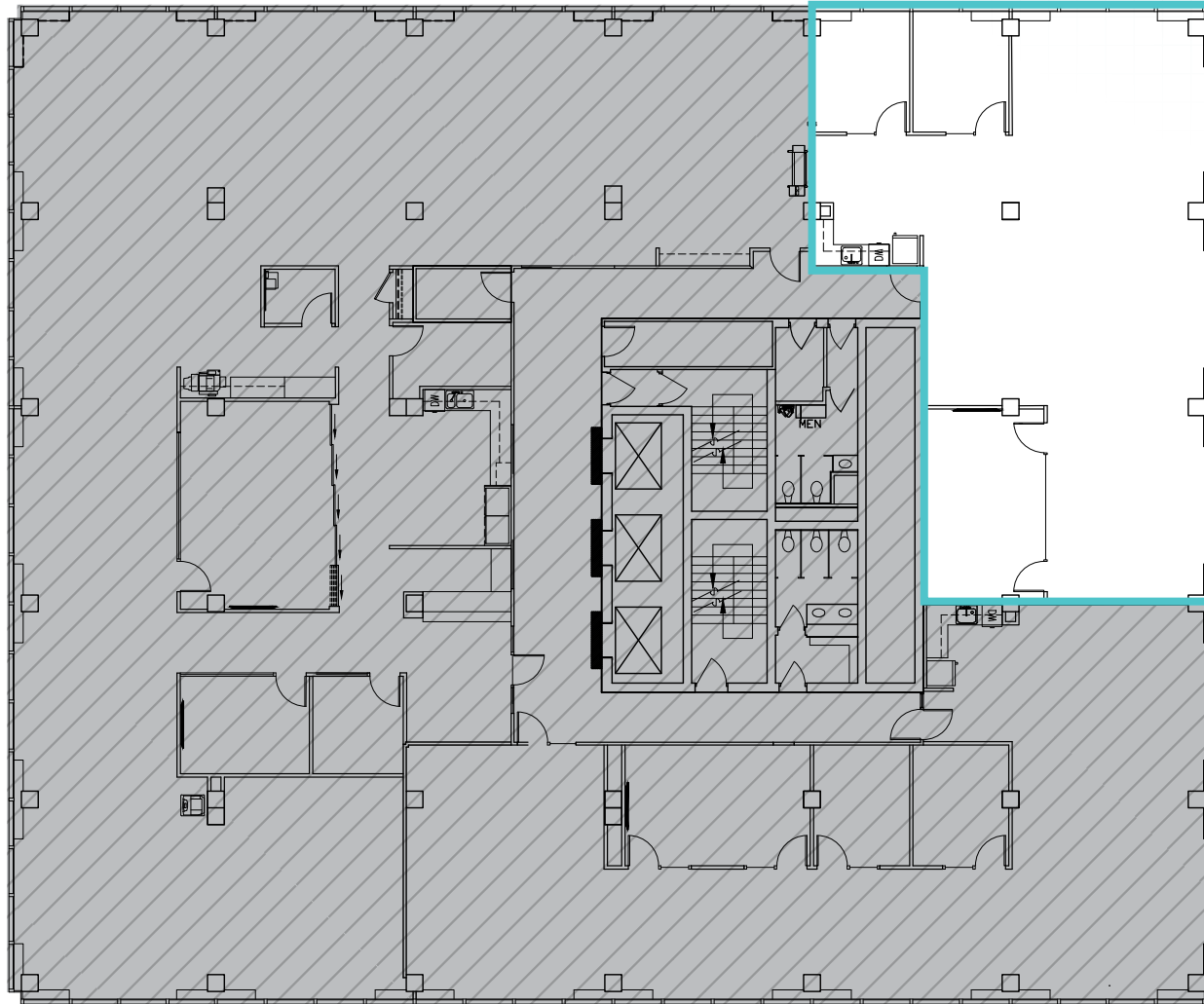


## Suite 620

2,629 RSF  
Northwest corner suite  
Conference rooms  
Kitchenette  
Private offices  
Reception  
Available now







## Suite 710 ▶

2,474 RSF  
Rent ready  
Open work area  
Conference room  
Private offices  
Kitchenette  
Available 1/1/2025

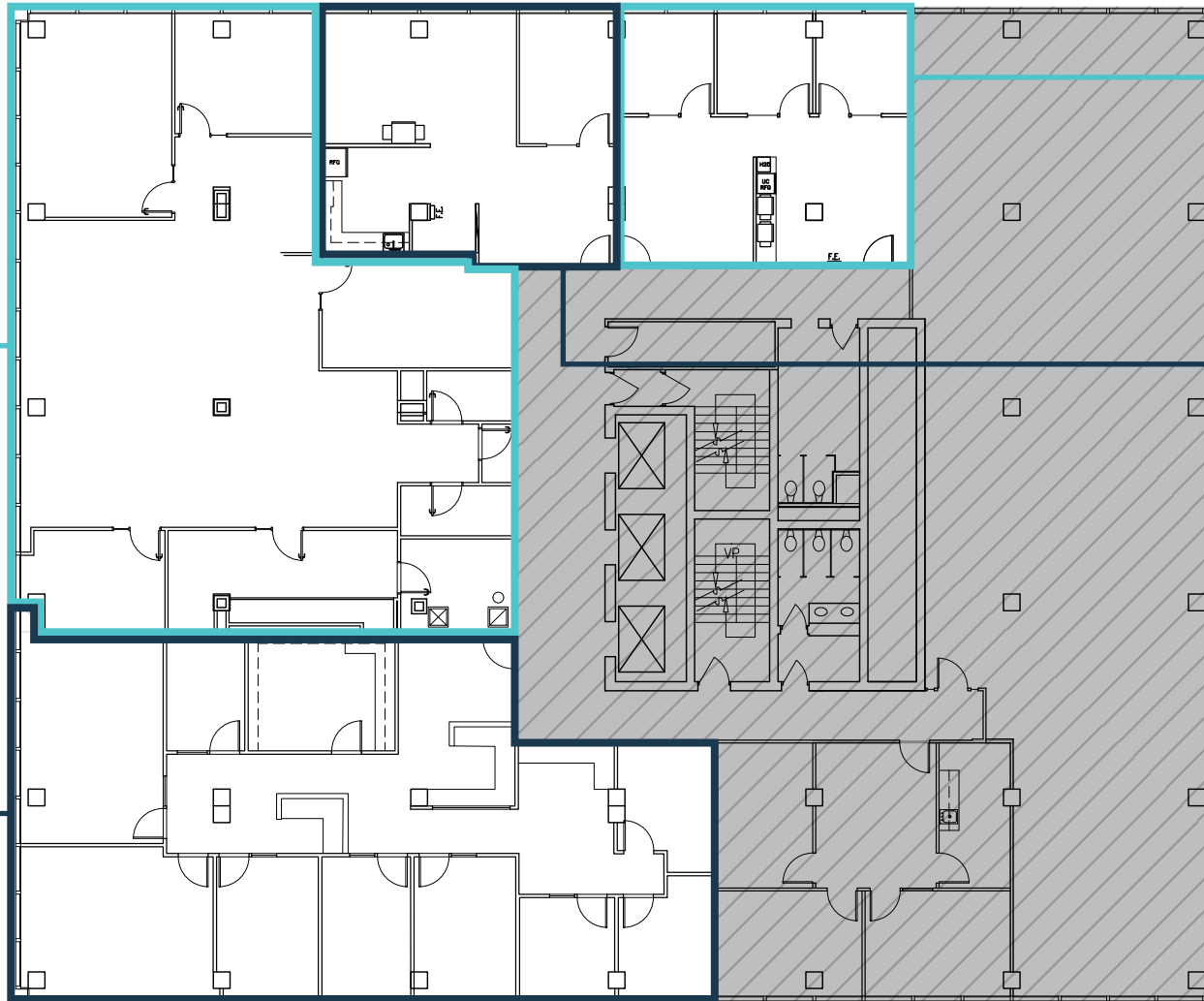


## Suite 801 ▶

3,140 RSF  
Private offices  
Available now

## Suite 800 ▶

2,827 RSF  
Private office  
Kitchenette  
Available with  
30 days' notice



## Suite 810 ▶

944 RSF  
Three offices  
Kitchen  
Available now

## Suite 805 ▶

892 RSF  
Private office  
Kitchenette  
Available with  
30 days' notice

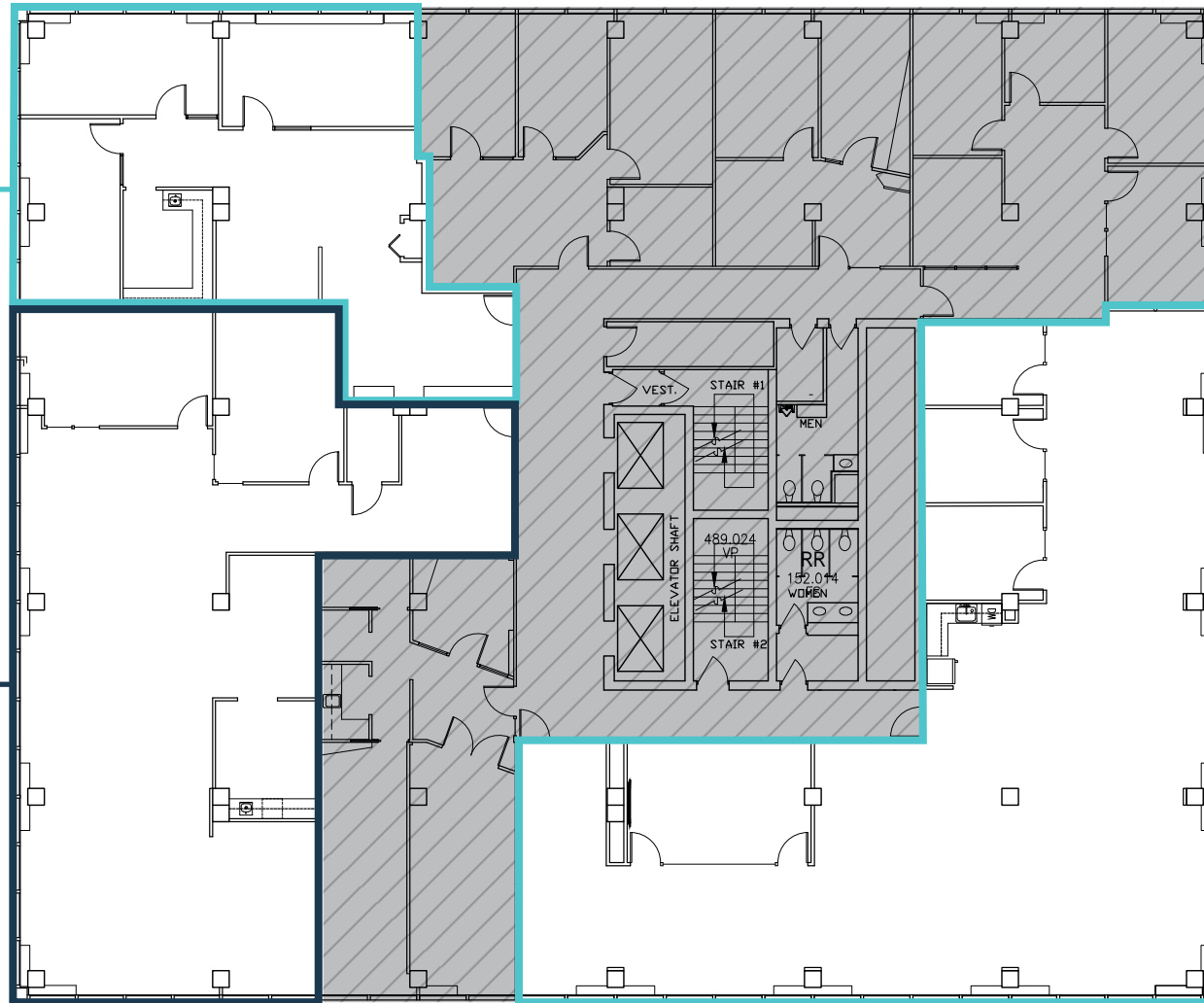


## Suite 927 ▶

1,660 RSF  
Open work area  
Conference room  
Private offices  
Kitchenette  
Available 2/1/2025

## Suite 940 ▶

2,908 RSF  
Private offices  
Open work area  
Kitchenette  
Conference room  
Available now



## Suite 950 ▶

3,744 RSF  
Rent ready  
Private offices  
Open work area  
Kitchenette  
Conference room  
Available now





---

# LOGAN BUILDING

**DAMON MCCARTNEY** | 206.838.7633  
mccartney@broderickgroup.com

**LAUREN HALLGRIMSON** | 206.948.4440  
hallgrimson@broderickgroup.com

**BRODERICK**  
• GROUP •