

FOR LEASE

ASHLEY DISTRIBUTION CENTER - FREDERICKSON INDUSTRIAL PARK

*1,110,154 SF For Lease
Available Now*

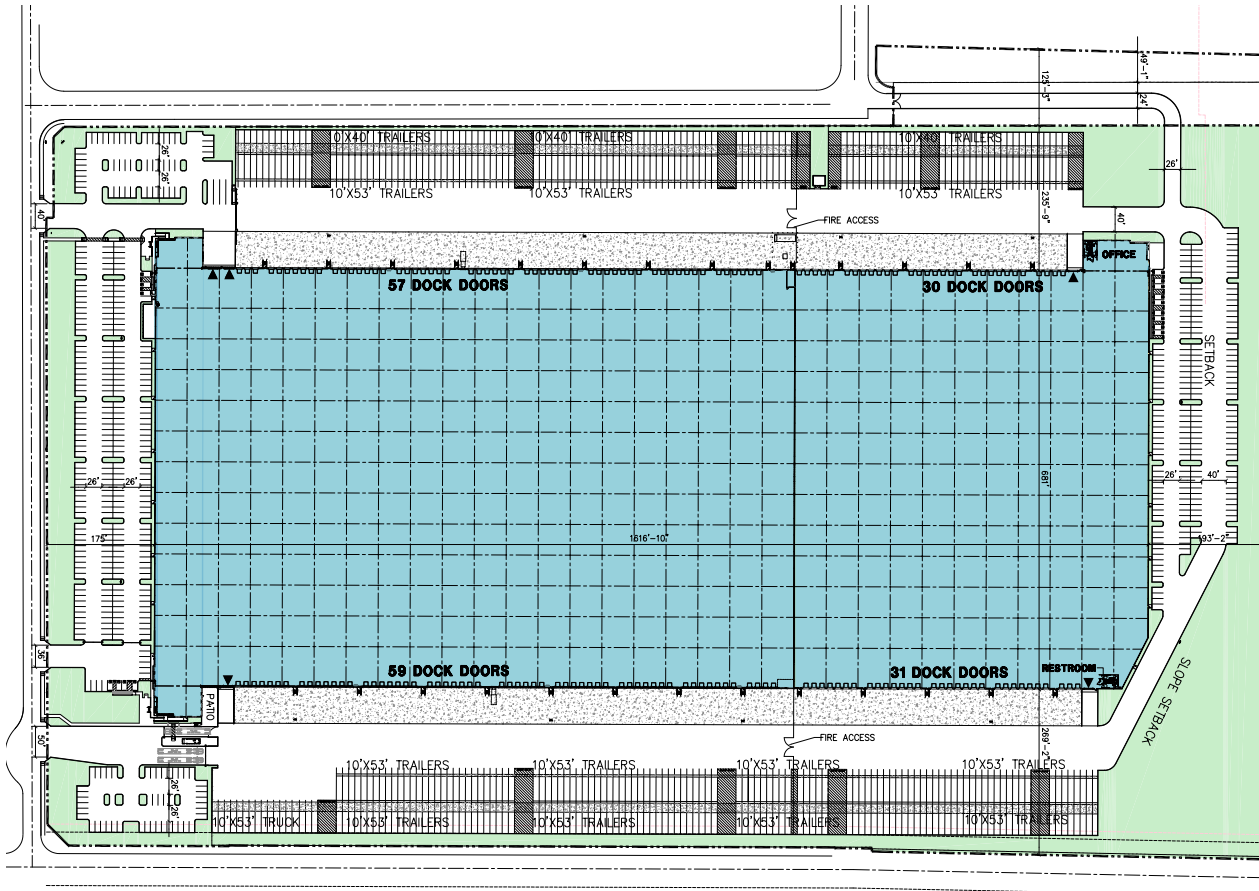
20623 34TH AVE E
SPANAWAY, WA

KIDDER.COM

 **HODGDON**
GROUP REALTY

 **Kidder
Mathews**

ASHLEY DISTRIBUTION CENTER - FREDERICKSON INDUSTRIAL PARK



AVAILABLE NOW!

1,110,154 SF shell

29,070 SF office total
 - 21,625 SF NW Office Node
 - 7,445 SF SW Office Node

177 dock doors, all with dock packages

40,000 lb mechanical levelers at every door

5 grade level doors

571 auto stalls

467 trailer stalls
 - 335 trailer (10'x53')
 - 115 trailer (10'x40')
 - 17 truck (10'x53')

Concrete tilt construction; reinforced slab

Three phase power

ESFR fire protection

40' clear height

Fully fenced and secured

65' speed bay

50' x 52' column spacing

25 FC AFF minimum in speed bay

TY CLARKE
 Kidder Mathews
 253.722.1419
 ty.clarke@kidder.com

TODD CLARKE
 Kidder Mathews
 253.722.1422
 todd.clarke@kidder.com

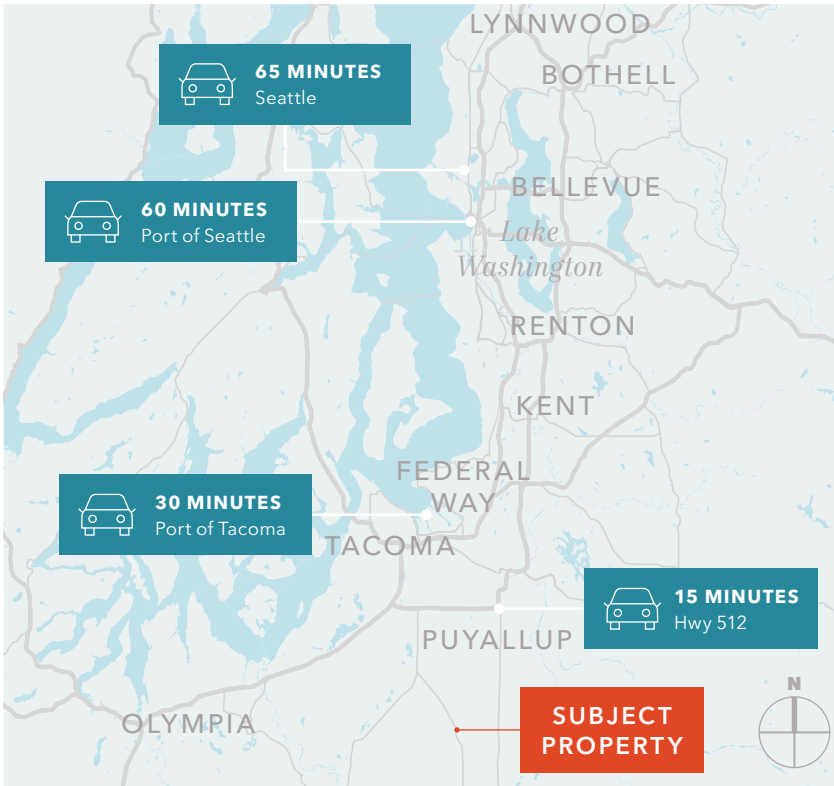
AARON HODGDON
 Hodgdon Group Realty
 909.229.2192
 aaron@hodgdongroup.com

KIDDER.COM

This information supplied herein is from sources we deem reliable. It is provided without any representation, warranty, or guarantee, expressed or implied as to its accuracy. Prospective Buyer or Tenant should conduct an independent investigation and verification of all matters deemed to be material, including, but not limited to, statements of income and expenses. Consult your attorney, accountant, or other professional advisor.



ASHLEY DISTRIBUTION CENTER - FREDERICKSON INDUSTRIAL PARK



LOCATION HIGHLIGHTS

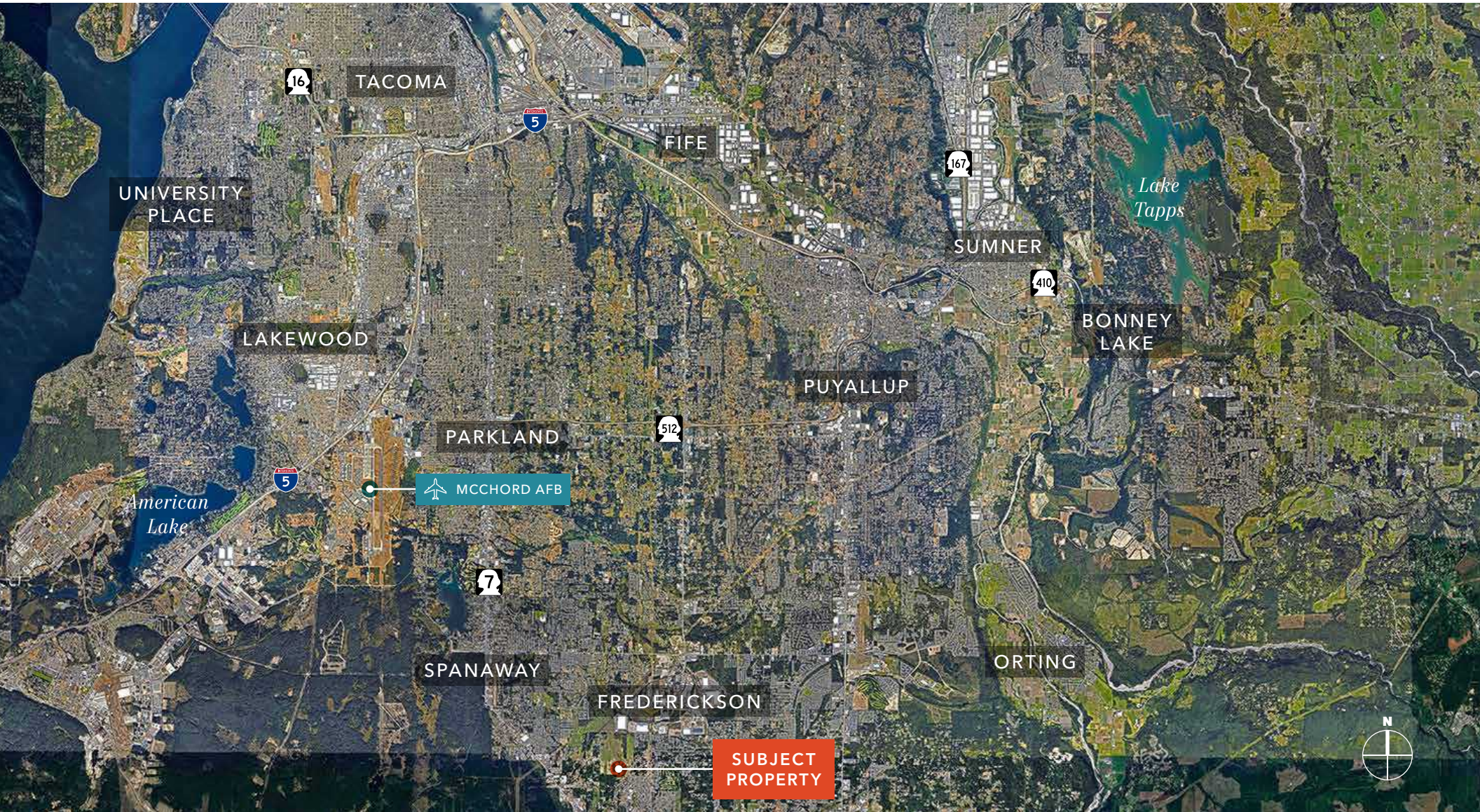
I-5	19 Minute
Highway 512	15 Minutes
Port of Tacoma	30 Minutes
Port of Seattle	60 Minutes
Seattle	65 Minutes

KIDDER.COM

This information supplied herein is from sources we deem reliable. It is provided without any representation, warranty, or guarantee, expressed or implied as to its accuracy. Prospective Buyer or Tenant should conduct an independent investigation and verification of all matters deemed to be material, including, but not limited to, statements of income and expenses. Consult your attorney, accountant, or other professional advisor.



ASHLEY DISTRIBUTION CENTER - FREDERICKSON INDUSTRIAL PARK



KIDDER.COM

This information supplied herein is from sources we deem reliable. It is provided without any representation, warranty, or guarantee, expressed or implied as to its accuracy. Prospective Buyer or Tenant should conduct an independent investigation and verification of all matters deemed to be material, including, but not limited to, statements of income and expenses. Consult your attorney, accountant, or other professional advisor.



ASHLEY DISTRIBUTION CENTER - FREDERICKSON INDUSTRIAL PARK



KIDDER.COM

This information supplied herein is from sources we deem reliable. It is provided without any representation, warranty, or guarantee, expressed or implied as to its accuracy. Prospective Buyer or Tenant should conduct an independent investigation and verification of all matters deemed to be material, including, but not limited to, statements of income and expenses. Consult your attorney, accountant, or other professional advisor.

