

WEST SEATTLE OFFICE SPACE

6041 California Avenue Southwest, Seattle, WA 98136

FOR LEASE
AVAILABLE
NOW



For more information please contact:

LEX PETRAS

lexp@gibraltarusa.com

206.618.8462



WEST SEATTLE OFFICE SPACE



WEST SEATTLE OFFICE SPACE

Discover the vibrant surroundings of this location at 6041 California Avenue Southwest. Nestled in the heart of West Seattle, this area offers a perfect balance of work and play. Enjoy a wide array of local eateries, coffee shops, and boutique shopping just a short distance away. The nearby Alki Beach provides a picturesque backdrop for rejuvenating lunch breaks or after-work stroll. For those seeking entertainment and culture, the bustling Admiral District and the historic West Seattle Junction are just moments away. With its convenient access to major transportation routes and attractive amenities, the area offers an ideal setting for office tenants to thrive.

865 SF with reception, three offices and kitchenette area
Rent rate - \$30 PSF + estimated NNN for 2025 to be \$7.68

Total monthly - \$2,716.10

Up to two Tenant parking stalls available at \$100 per month

6041 CALIFORNIA AVENUE SOUTHWEST, SEATTLE, WA 98136

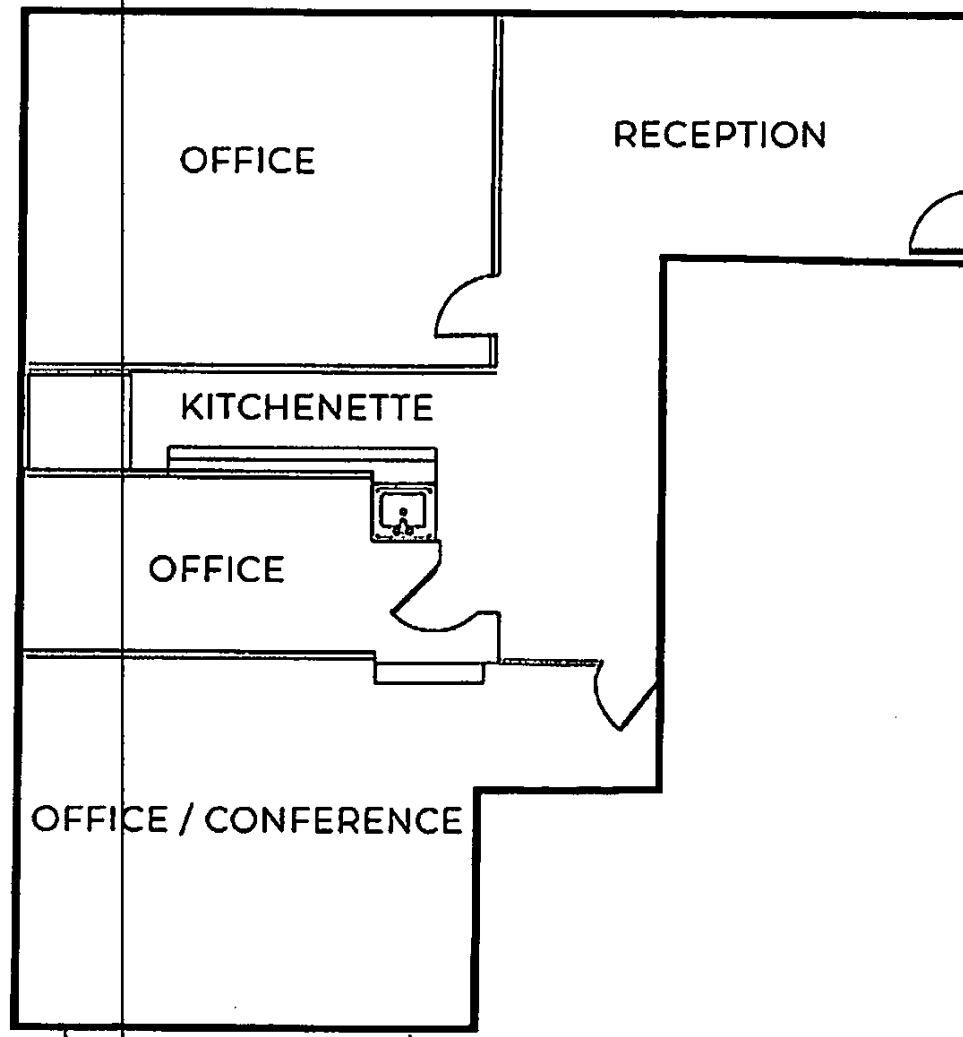
WEST SEATTLE OFFICE SPACE



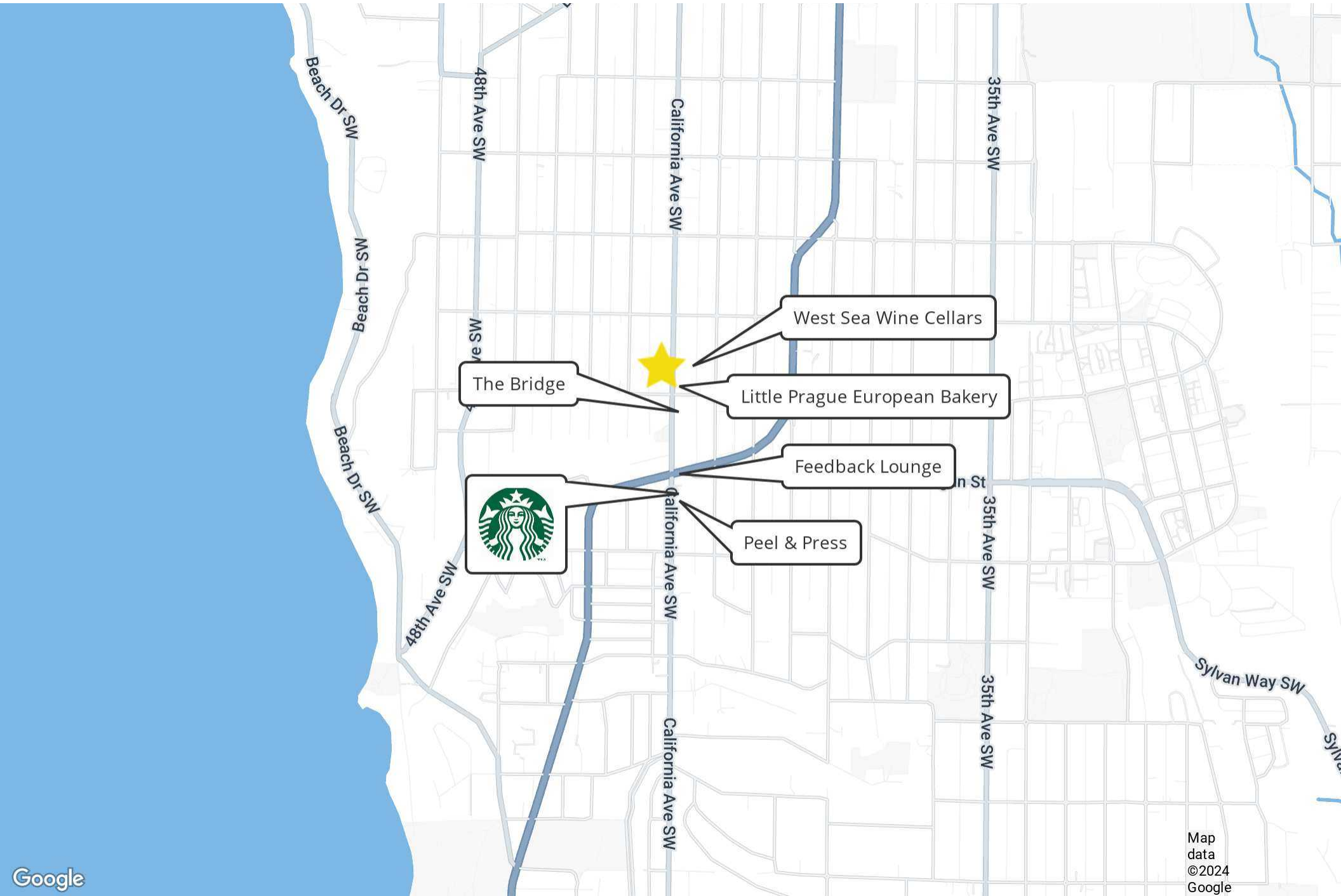
WEST SEATTLE OFFICE SPACE

Seattle, WA 98136

850 RSF



WEST SEATTLE OFFICE SPACE



For more information please contact:

LEX PETRAS

lexp@gibraltarusa.com

206.618.8462



720 SENECA ST - SUITE B - SEATTLE, WA 98101

This information has been obtained from sources believed reliable. No guarantee, warranty or representation, express or implied, is made as to the accuracy of the information contained herein, and same is submitted subject to errors, omissions, change of price, rental or other conditions withdrawal without notice, and to any special listing conditions, imposed by our principals. Any projections, opinions, assumptions or estimates used are for example only and do not represent the current or future performance of the property.