



**Edmonds Medical Pavilion**  
7320 216th St SW

# Edmonds Medical Office Portfolio

**MEDICAL OFFICES  
FOR LEASE**

## **Marcus Yamamoto**

Senior Vice President  
+1 206 292 6062  
marcus.yamamoto@cbre.com

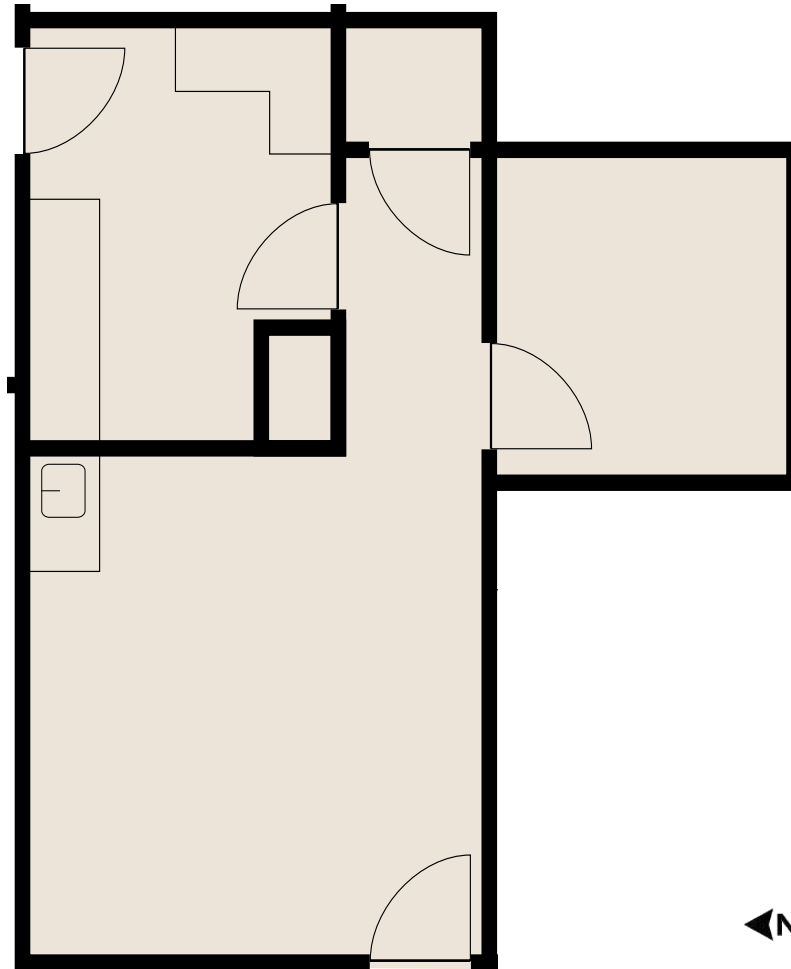
## **John Bauer**

Senior Vice President  
+1 425 462 6906  
john.bauer@cbre.com

## **Katie Smith**

Senior Associate  
+1 206 292 6012  
katie.m.smith@cbre.com

**Suite 15**  
**673 RSF**



**CBRE**



**HEALTHCARE  
REALTY**



**Edmonds Medical Plaza**  
21616 76th Ave W

**Suite 107**  
**1,283 RSF**

# Edmonds Medical Office Portfolio

**MEDICAL OFFICES  
FOR LEASE**

## **Marcus Yamamoto**

Senior Vice President

+1 206 292 6062

marcus.yamamoto@cbre.com

## **John Bauer**

Senior Vice President

+1 425 462 6906

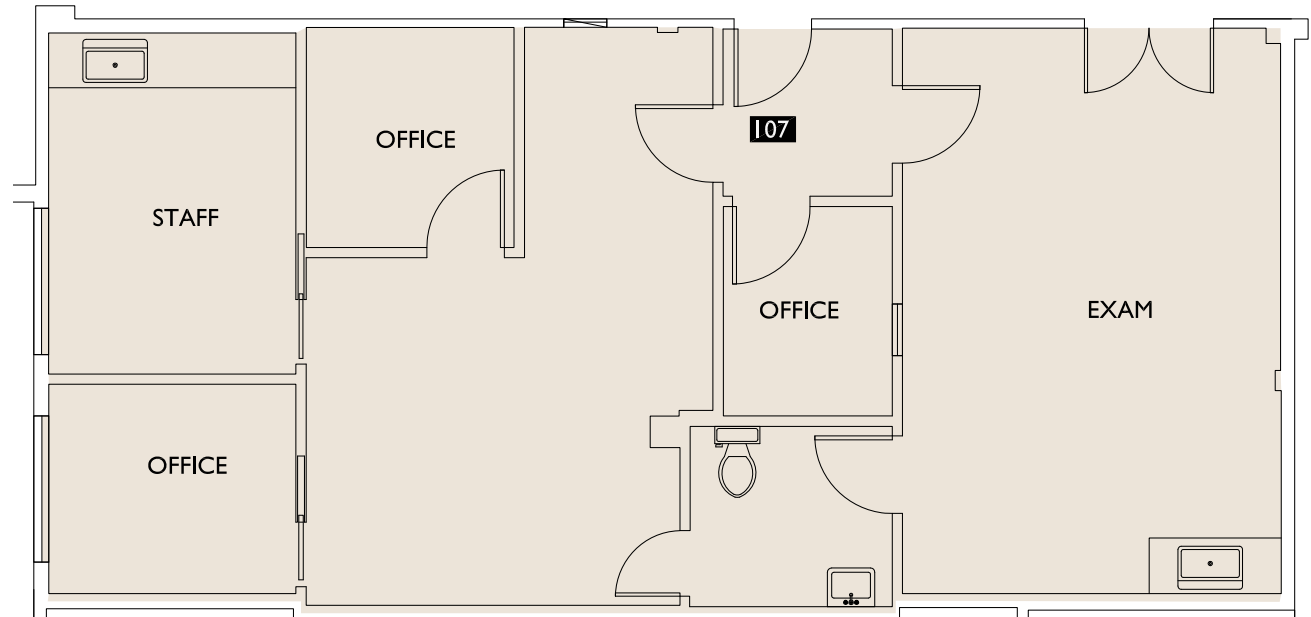
john.bauer@cbre.com

## **Katie Smith**

Senior Associate

+1 206 292 6012

katie.m.smith@cbre.com



**CBRE**



**HEALTHCARE  
REALTY**

CBRE | 1420 FIFTH AVENUE | SUITE 3800 | SEATTLE, WA 98101



**Edmonds Medical Plaza**  
21616 76th Ave W

**Suite 107**  
**Spec Suite Plan**  
**1,283 RSF**

# Edmonds Medical Office Portfolio

**MEDICAL OFFICES  
FOR LEASE**

## **Marcus Yamamoto**

Senior Vice President

+1 206 292 6062

marcus.yamamoto@cbre.com

## **John Bauer**

Senior Vice President

+1 425 462 6906

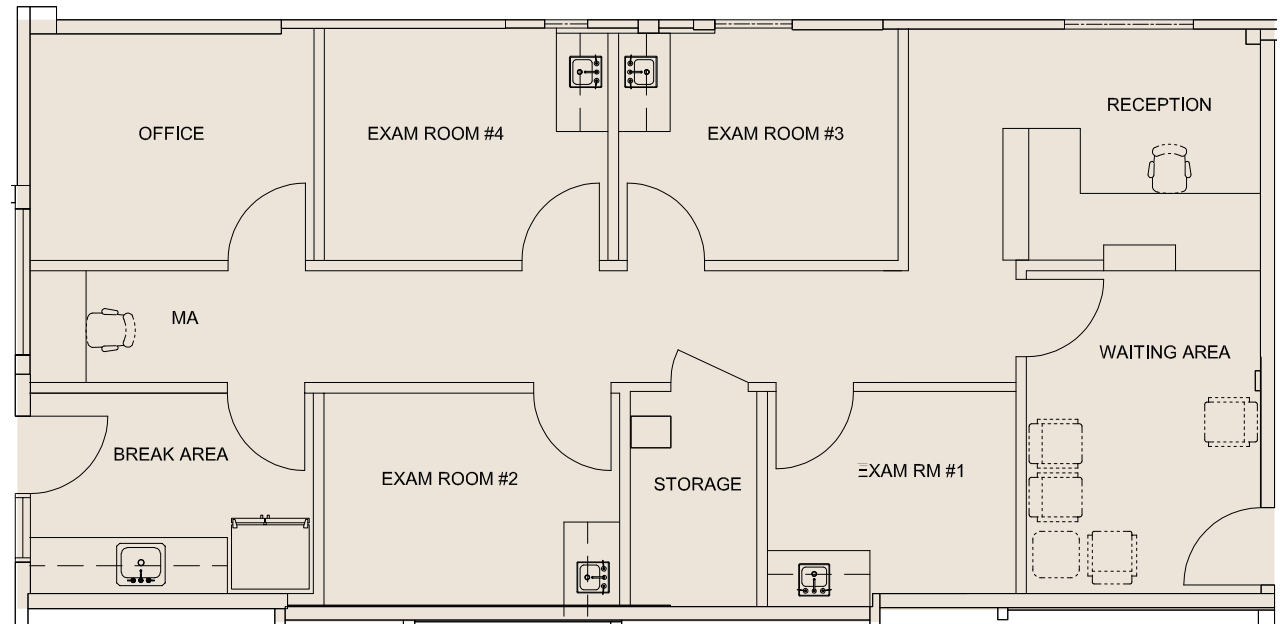
john.bauer@cbre.com

## **Katie Smith**

Senior Associate

+1 206 292 6012

katie.m.smith@cbre.com



**CBRE**



**HEALTHCARE  
REALTY**



**Edmonds Medical Plaza**  
21616 76th Ave W

**Suite 112**  
**4,168 RSF**

# Edmonds Medical Office Portfolio

**MEDICAL OFFICES  
FOR LEASE**

## **Marcus Yamamoto**

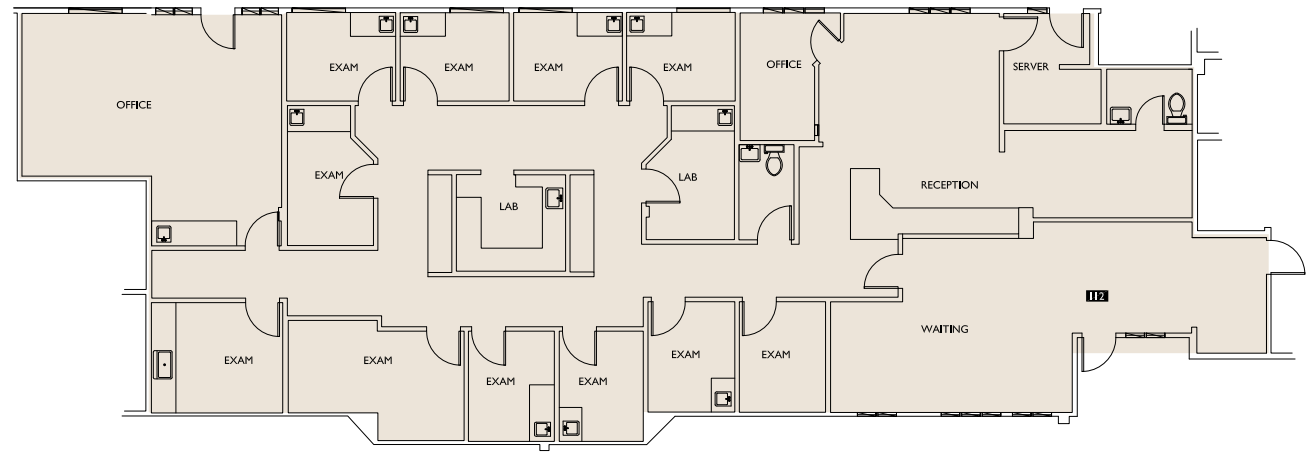
Senior Vice President  
+1 206 292 6062  
marcus.yamamoto@cbre.com

## **John Bauer**

Senior Vice President  
+1 425 462 6906  
john.bauer@cbre.com

## **Katie Smith**

Senior Associate  
+1 206 292 6012  
katie.m.smith@cbre.com



**CBRE**



**HEALTHCARE  
REALTY**