

# 10811 Building

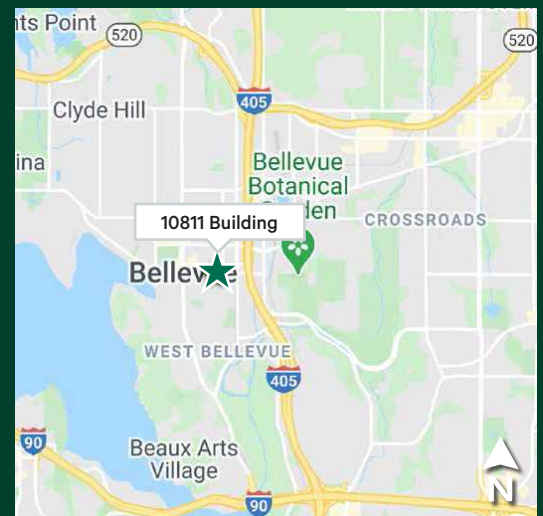
10811 Main Street  
Bellevue, WA 98004  
[www.cbre.com/bellevue](http://www.cbre.com/bellevue)

Rare Sublease - Available Immediately

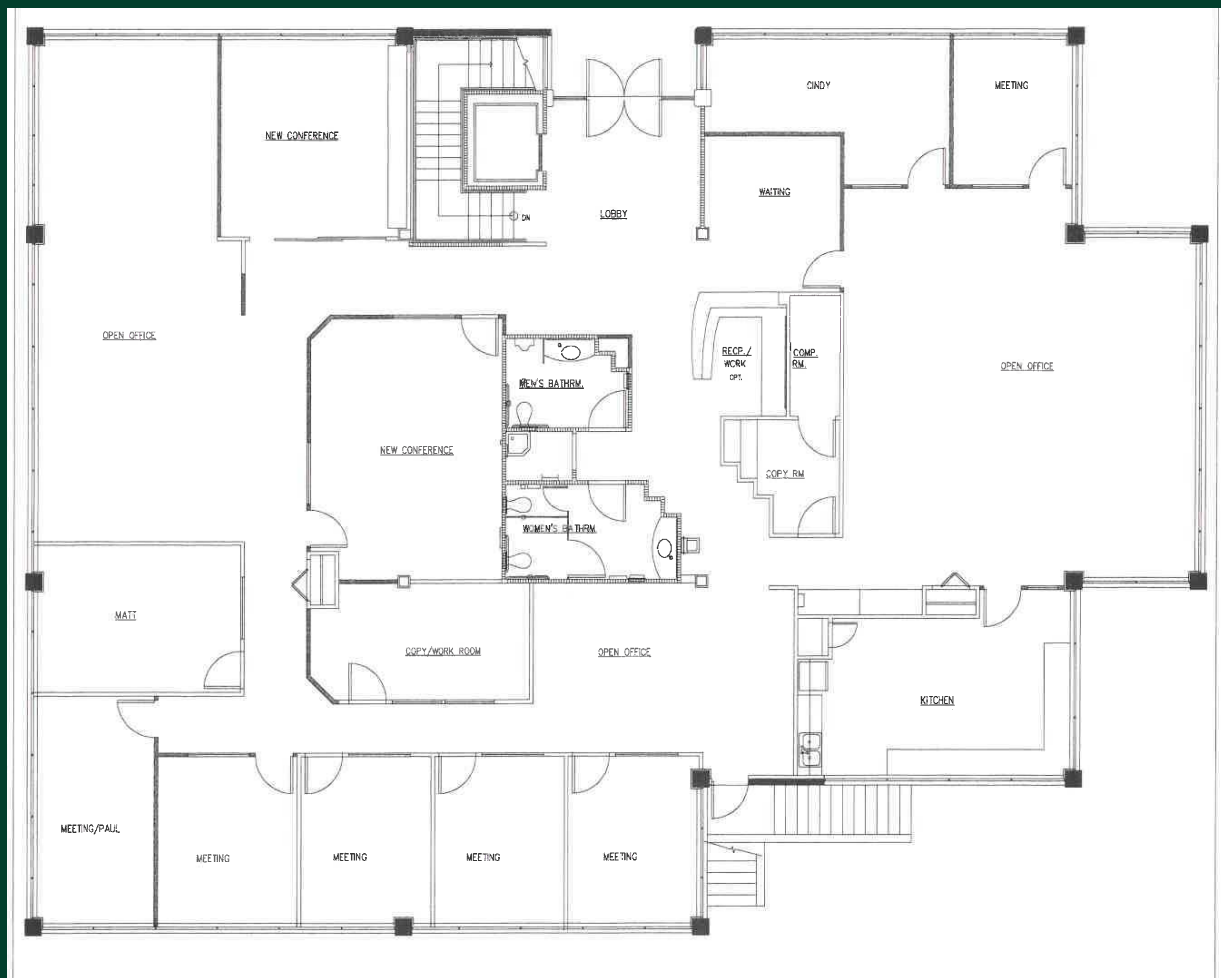


## Property Features

- + Full building opportunity
- + 5,885 RSF
- + Master lease expires 2/29/2028
- + Rare, Class A stand-alone office building Downtown Bellevue
- + Walking distance to future East Main Light Rail Station
- + Covered parking and surface parking available
- + Plug & play with furniture available
- + Great mix of private offices, conference space, and open work area



# Floor Plan



## Contact Us

**Jacob Hamlin**  
Vice President  
+1 425 462 6930  
jacob.hamlin@cbre.com

**Madison Lichter**  
Transaction Management Associate  
+1 425 319 8618  
madison.lichter@cbre.com

**CBRE, INC**  
929 108th Avenue NE  
Suite 700  
Bellevue, WA 98004

© 2025 CBRE, Inc. All rights reserved. This information has been obtained from sources believed reliable, but has not been verified for accuracy or completeness. You should conduct a careful, independent investigation of the property and verify all information. Any reliance on this information is solely at your own risk. CBRE and the CBRE logo are service marks of CBRE, Inc. All other marks displayed on this document are the property of their respective owners, and the use of such logos does not imply any affiliation with or endorsement of CBRE. Photos herein are the property of their respective owners. Use of these images without the express written consent of the owner is prohibited. DW 1.28.25