

FOR LEASE

JOSHUA SEARS BUILDING

701 Market Street, Kirkland, WA 98033



SPACE AVAILABLE

SIZE

7,152 SF

Floor 1: 3,576 SF

Floor 2: 3,576 SF

RATE

Call brokers

PARKING

19 parking stalls
plus additional
street parking

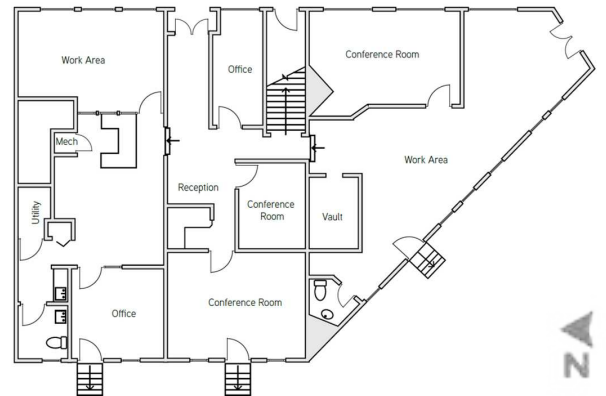
AVAILABLE

Now

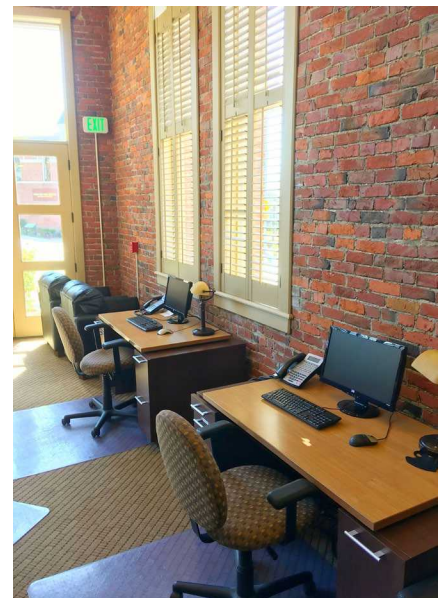
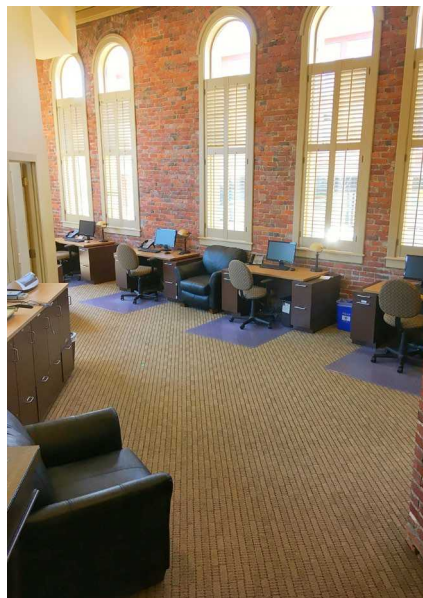
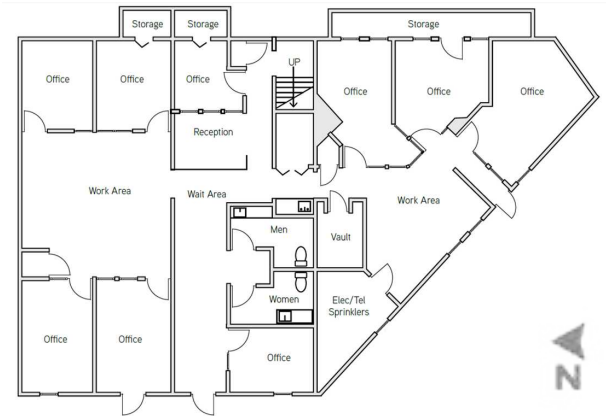
SIGNAGE

Building signage
available

UPPER FLOOR



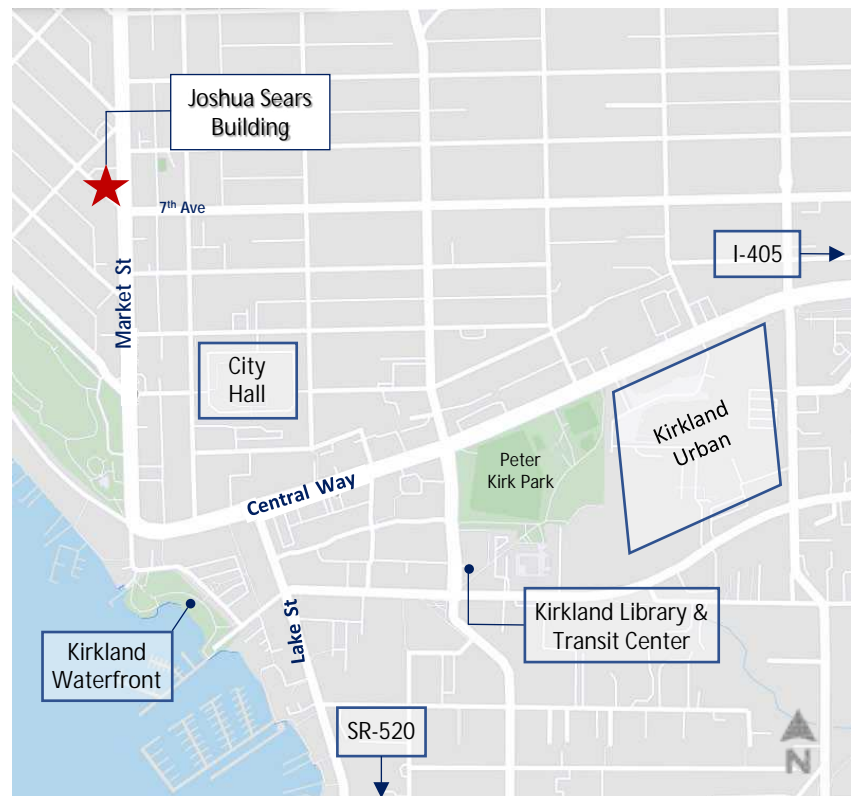
LOWER FLOOR





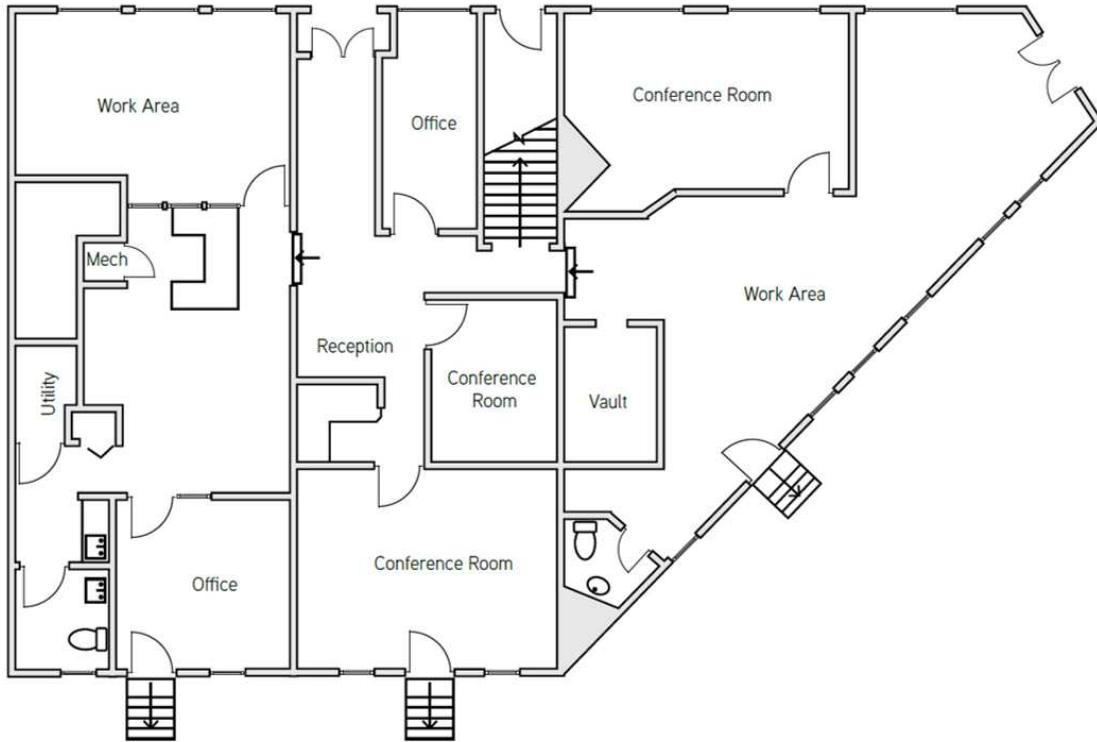
BUILDING HIGHLIGHTS

- Beautiful stand-alone office building with high visibility on Kirkland's finest community corridor - Market Street.
- Listed on the National Register of Historic Places.
- Walkable to Downtown Kirkland with nearby amenities including restaurants, Kirkland's Waterfront, Transit Center, Library, and Kirkland Urban.
- Excellent signage exposure in three separate locations on the building exterior.



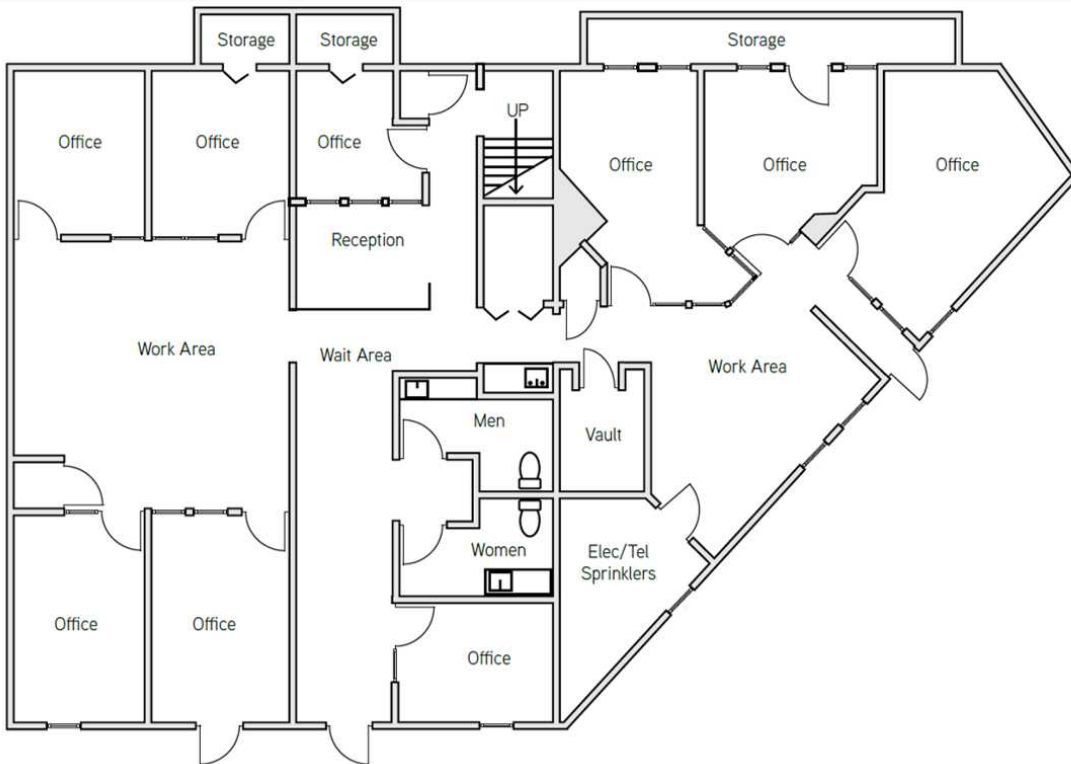
FLOOR PLAN

UPPER FLOOR



2A

LOWER FLOOR



2A

JOSHUA SEARS BUILDING

PLEASE CONTACT:

Joe Steele

+1425 462 6925
joe.steele@cbre.com

Riley Shephard

+1425 455 8500
riley.shephard@cbre.com

CBRE, Inc.

929 108th Ave NE
Suite 700
Bellevue, WA 98004

© 2024 CBRE, Inc. All rights reserved. This information has been obtained from sources believed reliable, but has not been verified for accuracy or completeness. You should conduct a careful, independent investigation of the property and verify all information. Any reliance on this information is solely at your own risk. CBRE and the CBRE logo are service marks of CBRE, Inc. All other marks displayed on this document are the property of their respective owners, and the use of such logos does not imply any affiliation with or endorsement of CBRE. Photos herein are the property of their respective owners. Use of these images without the express written consent of the owner is prohibited.
dw 9.18.24

701 Market Street, Kirkland, WA 98033