

OFFICE / FLEX / INDUSTRIAL FOR LEASE

# REDMOND EAST

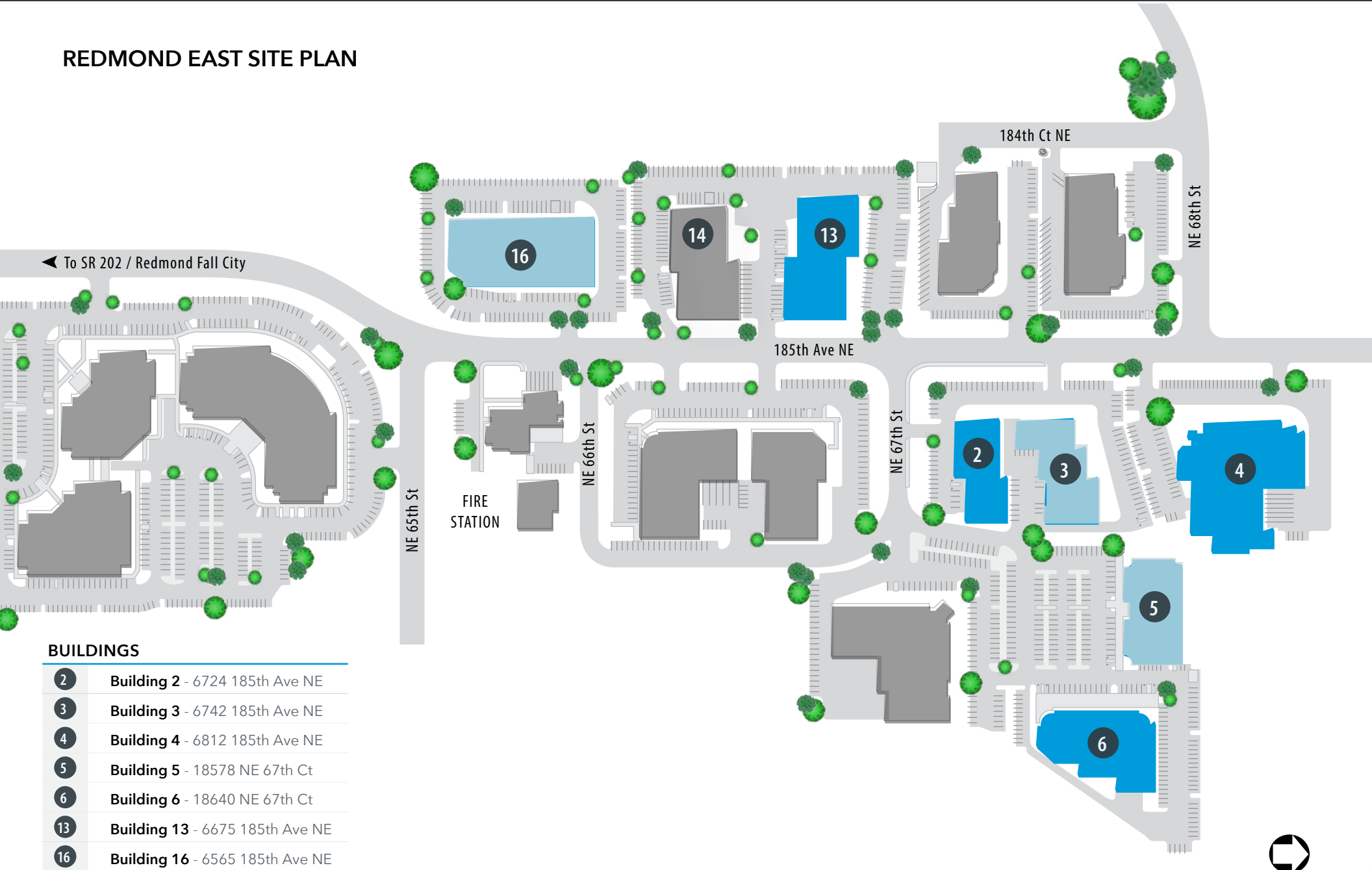
6565-6812 185TH AVE NE, 18578-18650 NE 67TH CT, REDMOND, WA 98052



**OFFICE, FLEX, HIGH-TECH BUSINESS PARK | EXCELLENT LOCATION**

Redmond East is an 8-building, Class A, 289,880 SF office and high-tech business park located in Redmond, WA. The park stretches over 14.8 acres overlooking the Redmond Valley, is home to a variety of diverse tenants and offers office, flex and light manufacturing space. Each of the buildings has a unique two-story entrance with screened off loading docks in the back to create ambiance and privacy. The property offers easy access to Highway 520, via NE 68th Street and Redmond Way, and is only minutes from abundant shopping and dining just off Highway 520.

## REDMOND EAST SITE PLAN



### BUILDINGS

2	Building 2 - 6724 185th Ave NE
3	Building 3 - 6742 185th Ave NE
4	Building 4 - 6812 185th Ave NE
5	Building 5 - 18578 NE 67th Ct
6	Building 6 - 18640 NE 67th Ct
13	Building 13 - 6675 185th Ave NE
16	Building 16 - 6565 185th Ave NE



## CAMPUS HIGHLIGHTS

- » Multi-tenant asset in a highly desirable location in Redmond, WA
- » Nearby restaurants, FedEx, Costco, US Post Office, Whole Foods and more
- » Natural light and contemporary construction
- » Easy access to Highway 520 and Downtown Redmond
- » Walking distance to the Downtown Remond Light Rail Station
- » Year Built: 1989 - 1990, Renovated 2008 & 2018
- » Parking: 2.3/1,000 SF



## BUILDING 3

6742 185TH AVE NE

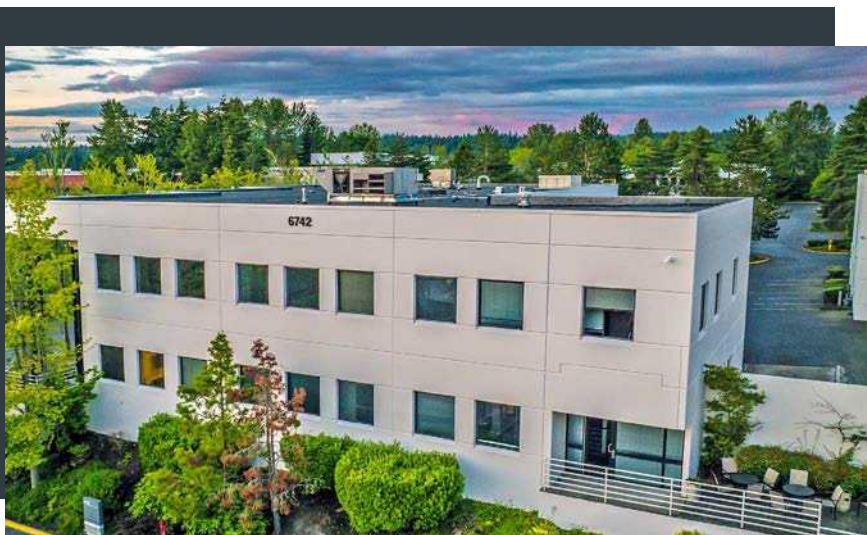
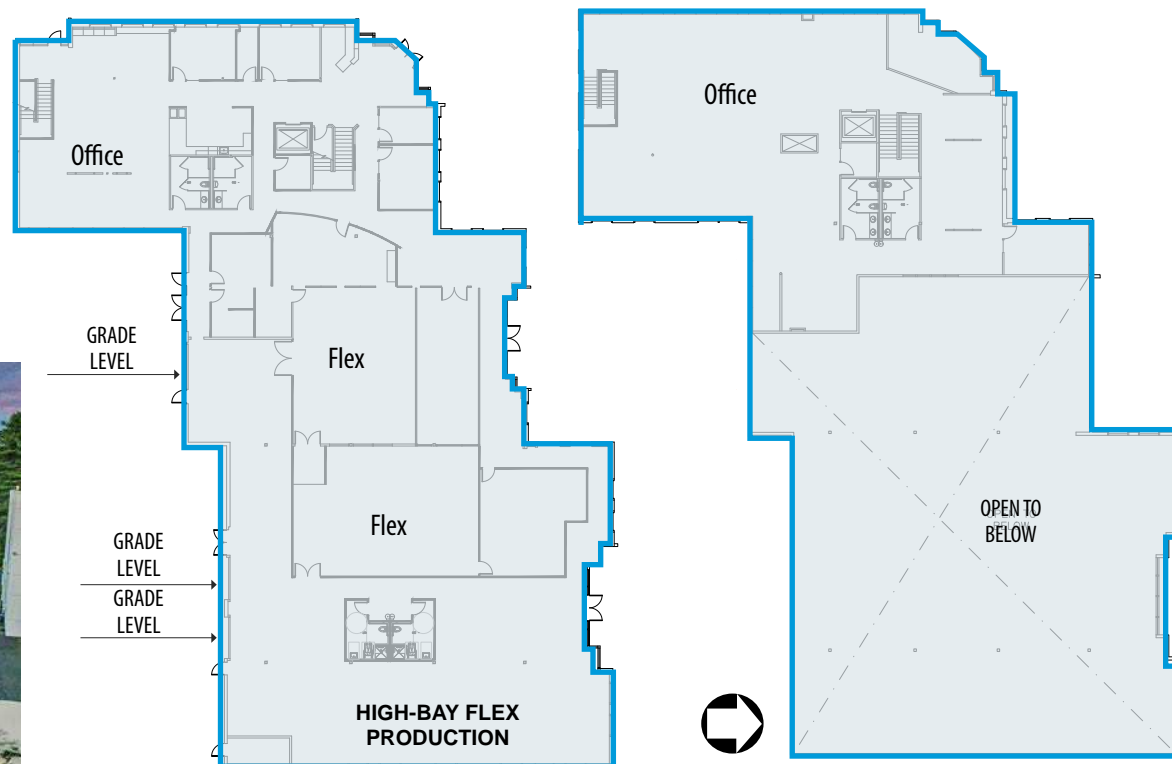
LEASE TYPE:	NNN		LEASE TERM:	Negotiable
AVAILABLE SPACE	OFFICE/FLEX SF	WAREHOUSE SF	TOTAL SF	BASE RENT / MO.
Full Building	16,506 SF	5,137 SF	21,643 SF	Negotiable

### FEATURES:

- » Full Building: 21,643 SF Available 10/01/2024
- » Two Floors
- » Grade Level Loading
- » Heavy Infrastructure
- » 24' Warehouse Clear Height

floor 1

floor 2



**CONTACT:** Jim Reed, SIOR  
jreed@lee-associates.com  
C 425.679.1681

Aaron Mathieu  
amathieu@lee-associates.com  
C 206.948.4670

Carson Scott  
cscott@lee-associates.com  
C 425.736.3752



## BUILDING 5

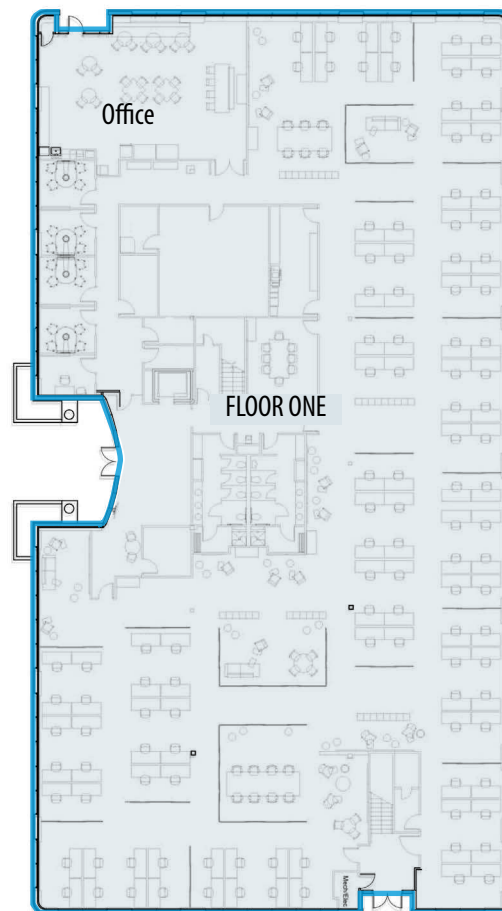
**18578 NE 67TH CT**

<b>LEASE TYPE:</b>	NNN		<b>LEASE TERM:</b>	Negotiable
<b>AVAILABLE SPACE</b>	<b>OFFICE/FLEX SF</b>	<b>WAREHOUSE SF</b>	<b>TOTAL SF</b>	<b>BASE RENT / MO.</b>
Full Building	34,492 SF		34,492 SF	Negotiable

### FEATURES:

- » Full Building: 34,492 SF Available 05/01/2025
- » Two Floors divisible to single floors
- » Large floor plates with open office layouts
- » Focus rooms, conference rooms available on each floor
- » Kitchen hub on each floor
- » Outdoor patios

floor 1



floor 2



**CONTACT:** Jim Reed, SIOR

jreed@lee-associates.com  
C 425.679.1681

Aaron Mathieu

amathieu@lee-associates.com  
C 206.948.4670

Carson Scott

cscott@lee-associates.com  
C 425.736.3752



## BUILDING 16

6565 185TH AVE NE

<b>LEASE TYPE:</b>	NNN		<b>LEASE TERM:</b>	Negotiable
<b>AVAILABLE SPACE</b>	<b>OFFICE/FLEX SF</b>	<b>WAREHOUSE SF</b>	<b>TOTAL SF</b>	<b>BASE RENT / MO.</b>
Full Building	55,297 SF		55,297 SF	Negotiable

### FEATURES:

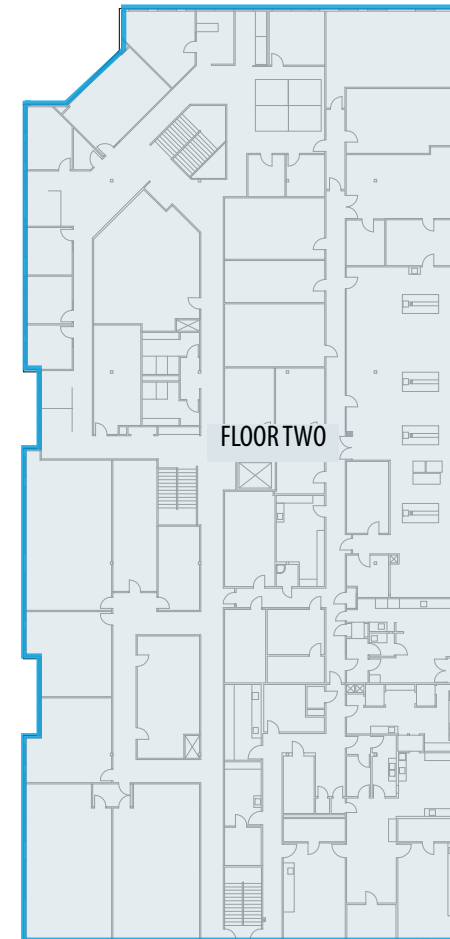
- » Full Building: 55,297 SF Available 10/01/2024
- » High Tech Flex (Lab/Clean Room)
- » Two Floors
- » Heavy Infrastructure
- » 3 Grade Level Doors



floor 1



floor 2



**CONTACT:** Jim Reed, SIOR  
 jreed@lee-associates.com  
 C 425.679.1681

**Aaron Mathieu**  
 amathieu@lee-associates.com  
 C 206.948.4670

**Carson Scott**  
 cscott@lee-associates.com  
 C 425.736.3752



