

27,836 & 37,996 SF
INDUSTRIAL



FOR LEASE



Valley Avenue Business Park

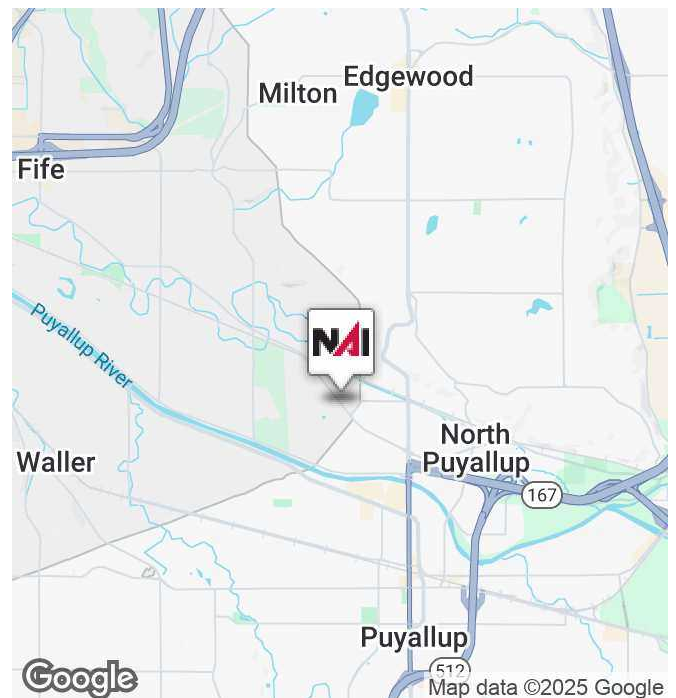
910 - 938 Valley Avenue NW, Puyallup, WA

Available Suites

- Bldg. 3, Suite 101: 37,996 SF
- Bldg. 5, Suite 101A: 27,836 SF

Property Highlights

- 30' Clear Height
- Abundant parking
- Close to SR 167 Interchange
- Exposure to Valley Avenue (front buildings)
- Call for rates



<https://www.nai-psp.com>

Arie Salomon, SIOR, CCIM
Principal | 425.586.5636
asalomon@nai-psp.com

Jeff Forsberg, CCIM
Principal | 425.586.5610
jforsberg@nai-psp.com

Bret Matysik
Vice President | 425.586.5617
bmatysik@nai-psp.com

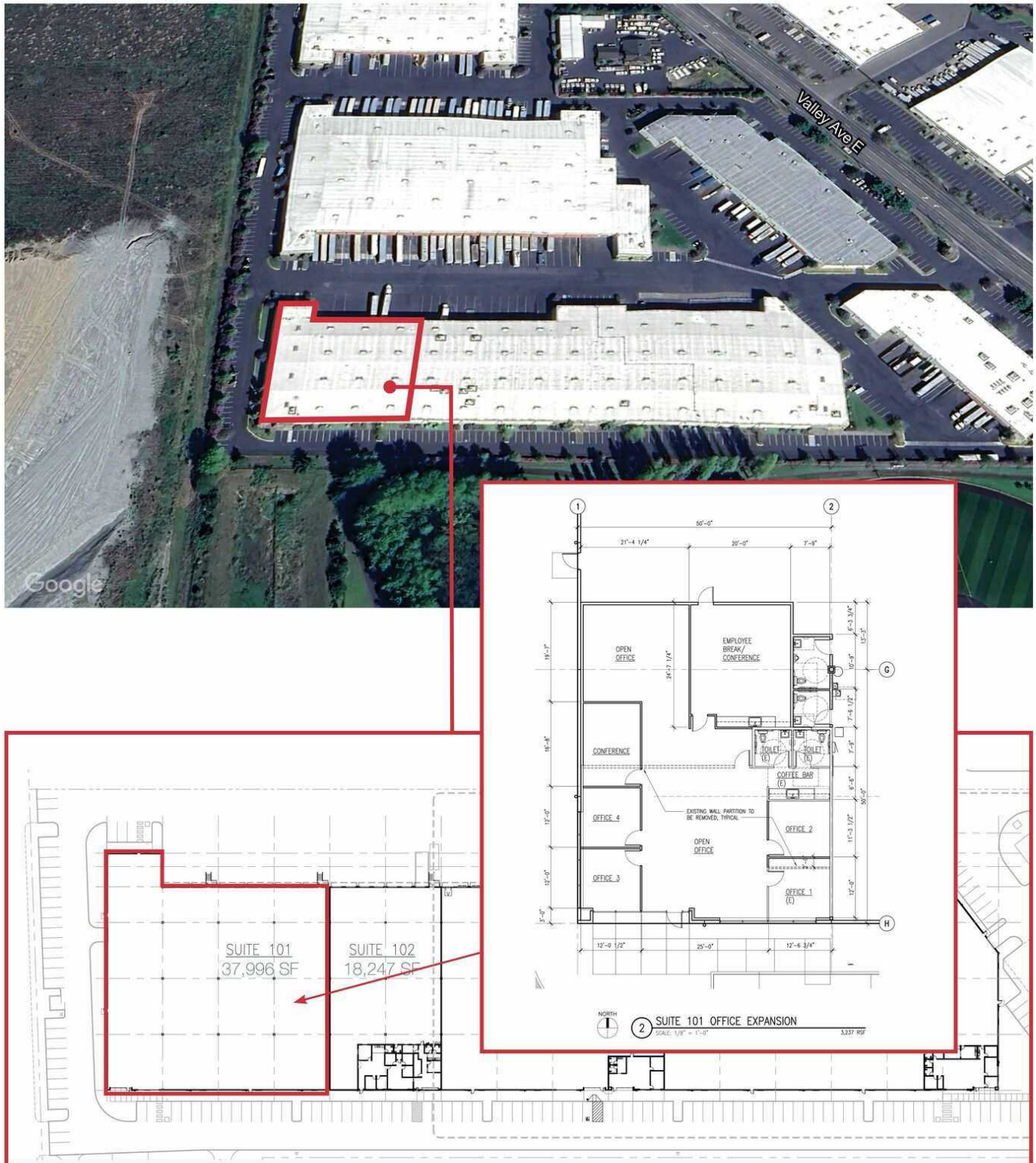
NO WARRANTY, EXPRESS OR IMPLIED, IS MADE AS TO THE ACCURACY OF THE INFORMATION CONTAINED HEREIN. THIS INFORMATION IS SUBMITTED SUBJECT TO ERRORS, OMISSIONS, CHANGE OF PRICE, RENTAL OR OTHER CONDITIONS, WITHDRAWAL WITHOUT NOTICE, AND IS SUBJECT TO ANY SPECIAL LISTING CONDITIONS IMPOSED BY OUR PRINCIPALS. COOPERATING BROKERS, BUYERS, TENANTS AND OTHER PARTIES WHO RECEIVE THIS DOCUMENT SHOULD NOT RELY ON IT, BUT SHOULD USE IT AS A STARTING POINT OF ANALYSIS, AND SHOULD INDEPENDENTLY CONFIRM THE ACCURACY OF THE INFORMATION CONTAINED HEREIN THROUGH A DUE DILIGENCE REVIEW OF THE BOOKS, RECORDS, FILES AND DOCUMENTS THAT CONSTITUTE RELIABLE SOURCES OF THE INFORMATION DESCRIBED HEREIN. LOGOS ARE FOR IDENTIFICATION PURPOSES ONLY AND MAY BE TRADEMARKS OF THEIR RESPECTIVE COMPANIES.

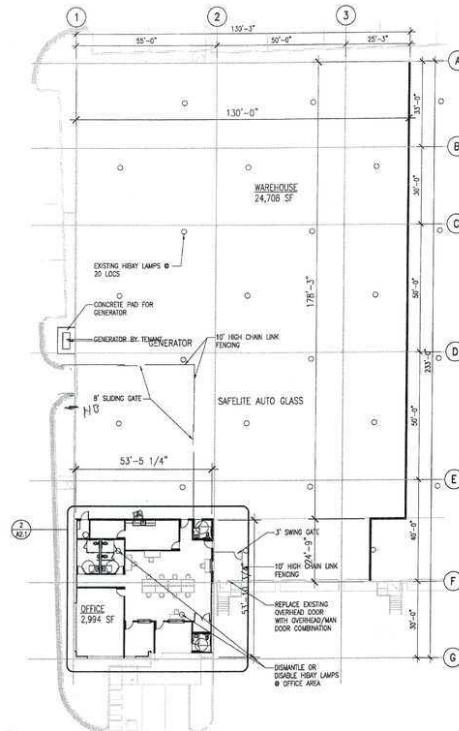
27,836 & 37,996 SF
INDUSTRIAL



FOR LEASE

Bldg. 3, Suite 101:





NO WARRANTY, EXPRESS OR IMPLIED, IS MADE AS TO THE ACCURACY OF THE INFORMATION CONTAINED HEREIN. THIS INFORMATION IS SUBMITTED SUBJECT TO ERRORS, OMISSIONS, CHANGE OF PRICE, RENTAL OR OTHER CONDITIONS, AND IS SUBJECT TO CANCELLATION, WITHOUT NOTICE, AND IS SUBJECT TO THE SPECIAL LISTING CONDITIONS IMPOSED BY OUR PRINCIPALS, COOPERATING BROKERS, BUYER, TENANTS AND OTHER PARTIES WHO RECEIVE THIS DOCUMENT. THIS DOCUMENT SHOULD NOT RELY ON IT BUT SHOULD USE IT AS A STARTING POINT OF ANALYSIS, AND SHOULD INDEPENDENTLY CONFIRM THE ACCURACY OF THE INFORMATION CONTAINED HEREIN THROUGH A DUE DILIGENCE REVIEW OF THE BOOKS, RECORDS, FILES AND DOCUMENTS THAT CONSTITUTE RELIABLE SOURCES OF THE INFORMATION DESCRIBED HEREIN. LOGOS ARE FOR IDENTIFICATION PURPOSES ONLY AND MAY BE TRADEMARKS OF THEIR RESPECTIVE COMPANIES.