

120 N WALL

**GROUND FLOOR RETAIL
AVAILABLE FOR LEASE
±3,500 SF**

YOUR SIGN HERE

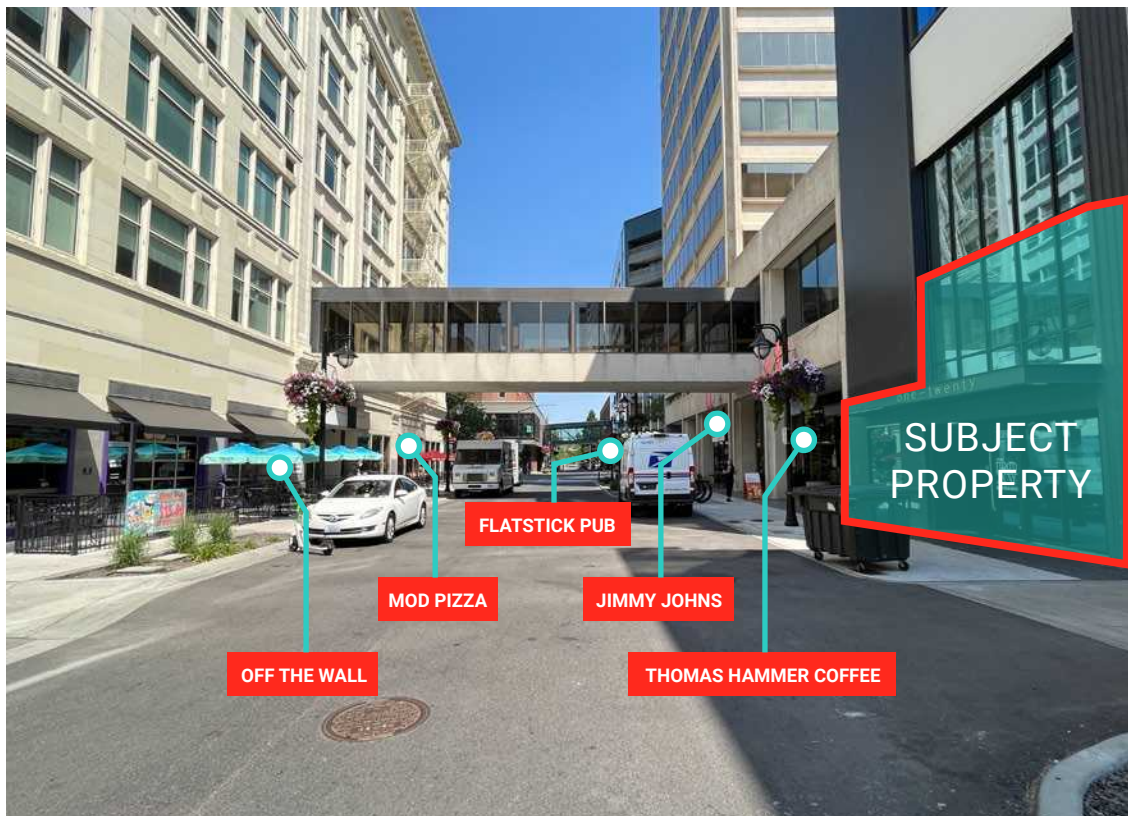
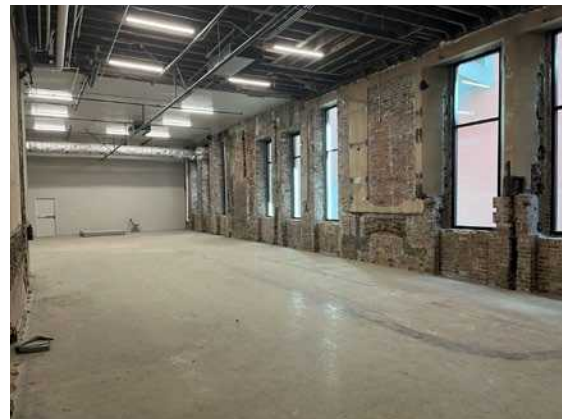
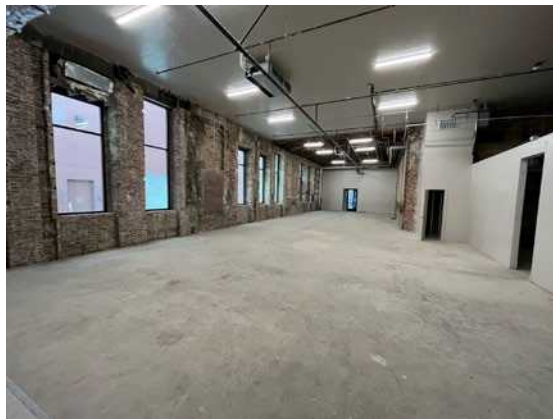
**YOUR
SIGN
HERE**



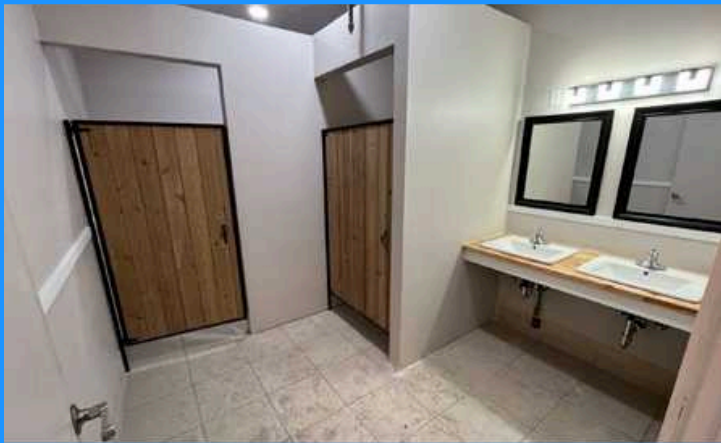
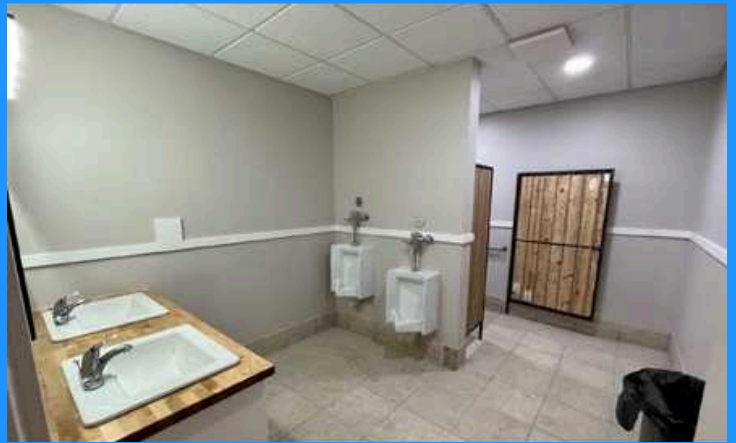
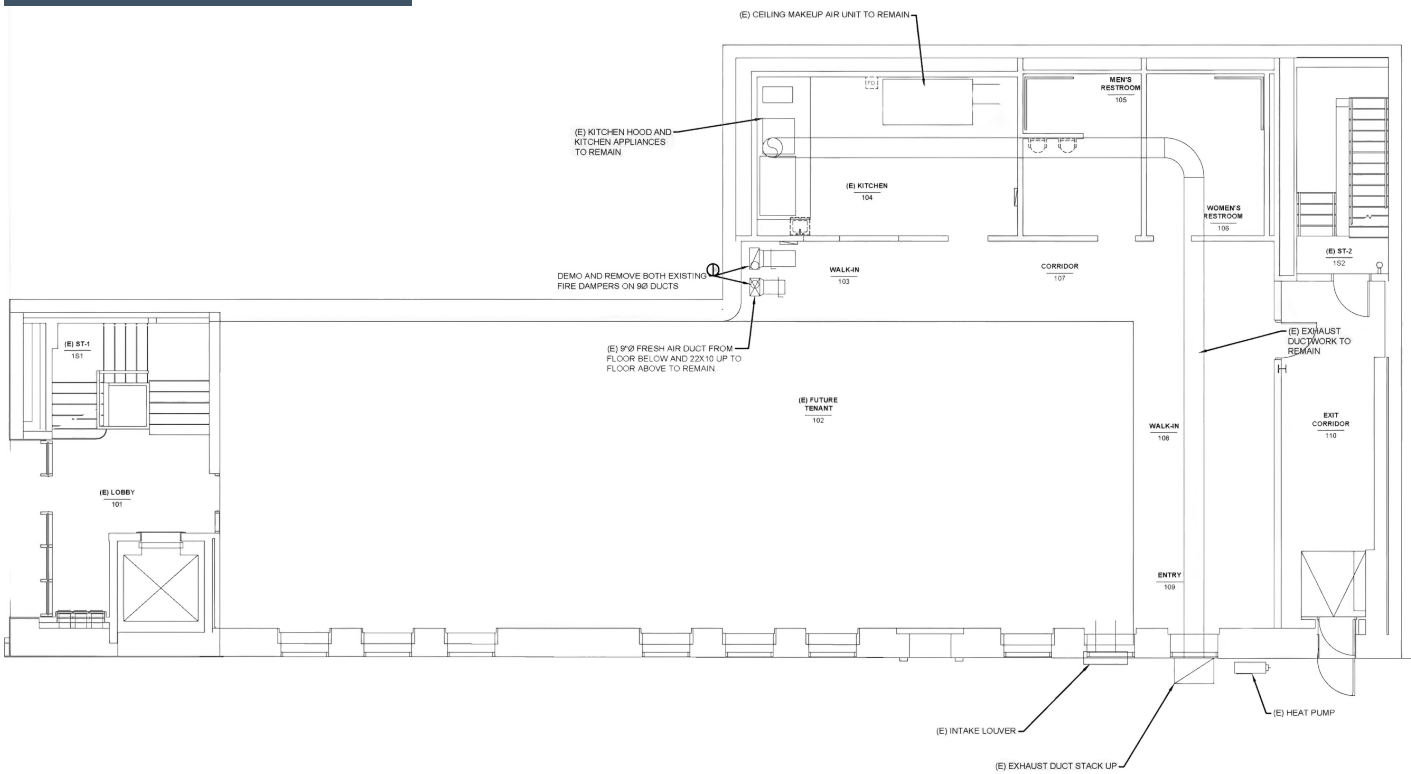
Jones Lang LaSalle Broker age, Inc. RE LIC. #01856260

ABOUT THE OPPORTUNITY

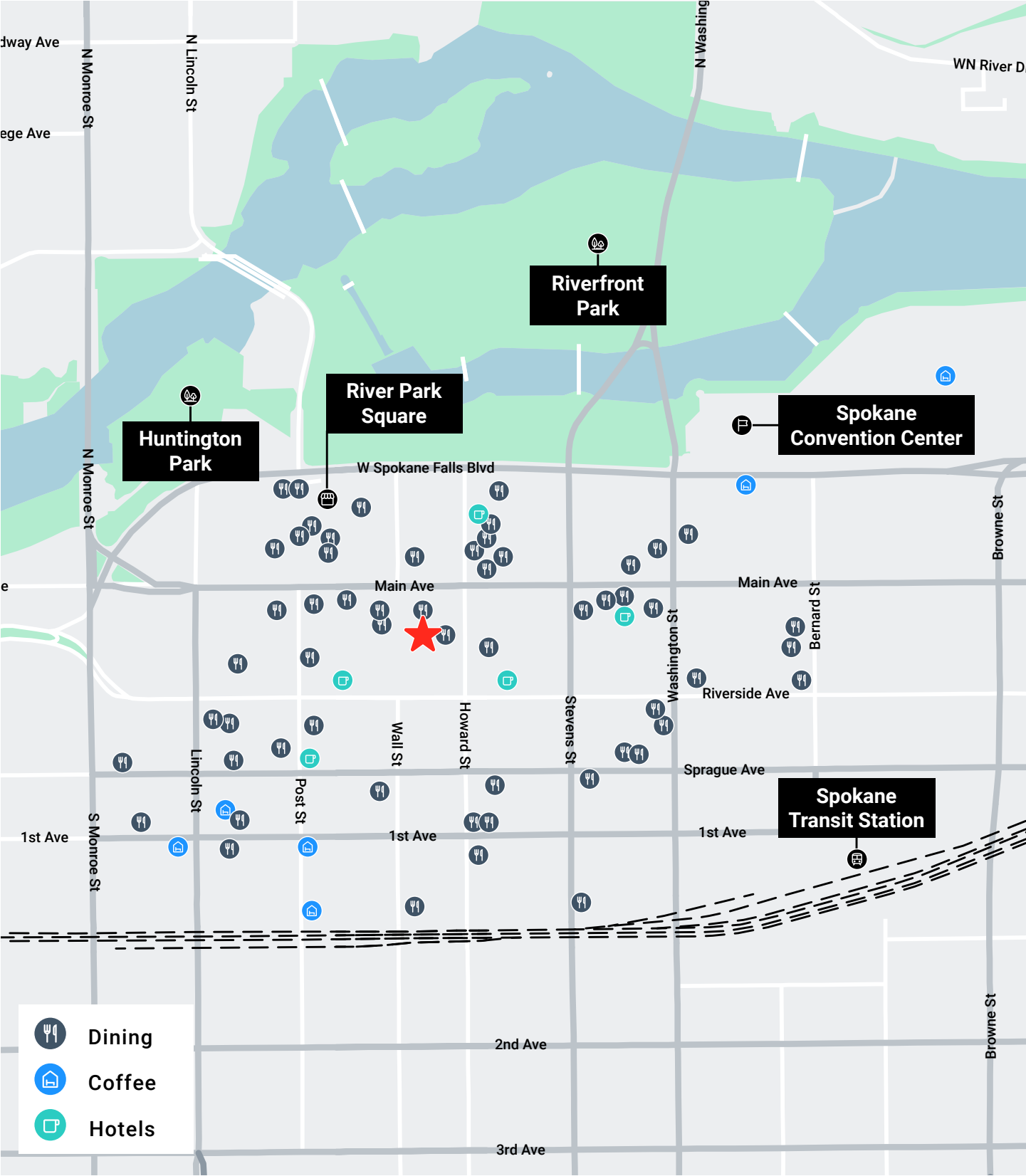
- ±3,500 SF
- Ground floor retail opportunity
- Located in the heart of CBD
- 17' feet tall ceilings
- Prominent mezzanine signage
- Historic renovation with modern improvements
- Stone's throw to Riverpark Square and Riverfront Park
- Lease rate: \$12.00 NNN PSF



THE SPACE



LOCAL AMENITIES & DEMOGRAPHICS





Total # Businesses

10,713



Consumer Spending

\$1.37M



Total # Employees

102,594

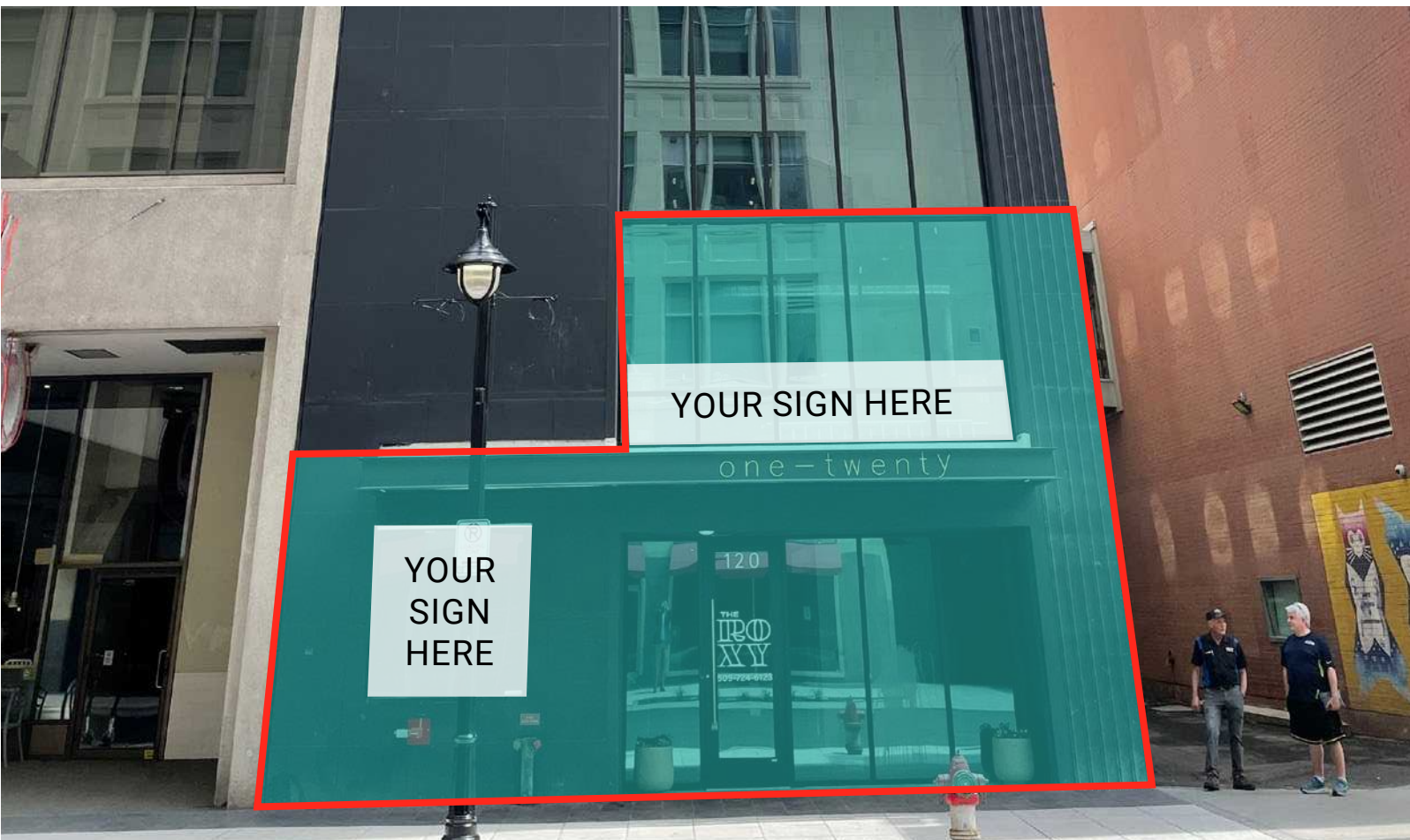


Average HH Income

\$70K

* 3 MILE RADIUS

Area profile	1 mile	2 miles	3 miles
Estimated population	17,038	62,168	113,933
Daytime population	69,335	88,228	102,594
Median household income	\$30,632	\$44,397	\$50,407



120 N WALL

Michael Sharapata

Senior Managing Director

michael.sharapata@jll.com

+1 509 822 0088

Lic # 26565

Jared Smith

Senior Associate

j.smith@jll.com

+1 509 505 7459

Lic # 20118285



Although information has been obtained from sources deemed reliable, neither Owner nor JLL makes any guarantees, warranties or representations, express or implied, as to the completeness or accuracy as to the information contained herein. Any projections, opinions, assumptions or estimates used are for example only. There may be differences between projected and actual results, and those differences may be material. The Property may be withdrawn without notice. Neither Owner nor JLL accepts any liability for any loss or damage suffered by any party resulting from reliance on this information. If the recipient of this information has signed a confidentiality agreement regarding this matter, this information is subject to the terms of that agreement. ©2023. Jones Lang LaSalle IP, Inc. All rights reserved.