



GAYTEWAY

BUSINESS PARK

20100 67TH AVENUE NE
ARLINGTON, WASHINGTON

PREMIER 496,000 SF, FIVE-BUILDING CLASS A INDUSTRIAL DEVELOPMENT: BUILDINGS FROM 65,000 TO 110,000 SF



- Five industrial buildings planned ranging from 65,000 SF to 110,000 SF
- Stand-alone Build-to-Suit opportunities
- High visibility from 67th Ave NE with signage
- Excellent truck access with dock- high and oversized grade level loading
- Excellent access to Hwy. 9 and two routes to I-5
- Retail services nearby

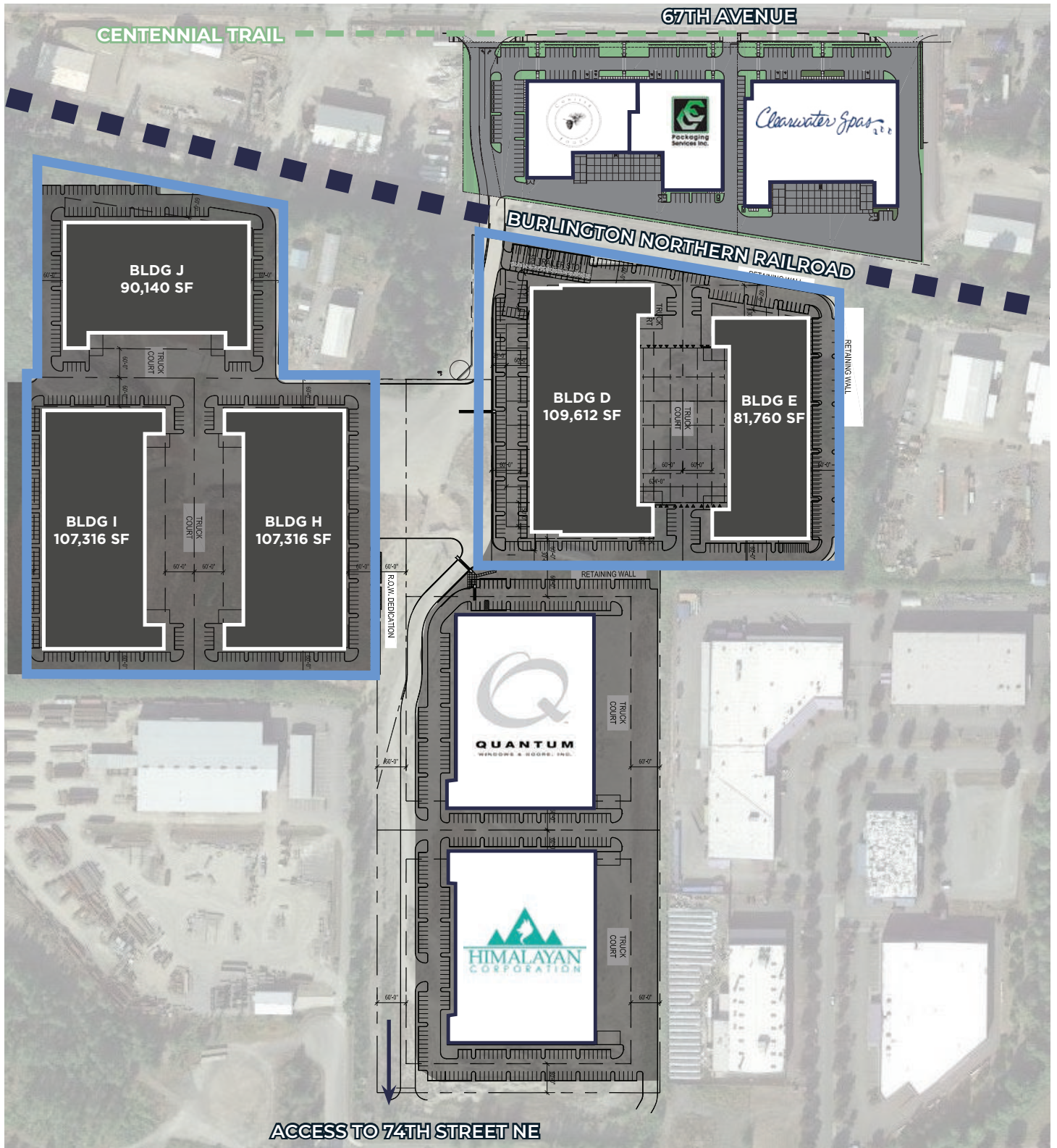
AL HODGE | (425) 646-5240 | hodge@broderickgroup.com
ERIC MEUSSNER | (425) 274-4282 | meussner@broderickgroup.com



GAYTEWAY

BUSINESS PARK

20100 67TH AVENUE NE
ARLINGTON, WASHINGTON

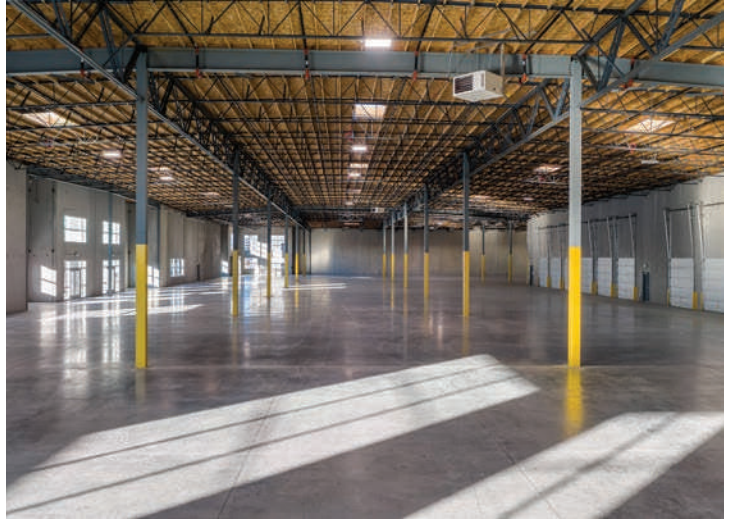




GAYTEWAY

BUSINESS PARK

20100 67TH AVENUE NE
ARLINGTON, WASHINGTON



AL HODGE | (425) 646-5240 | hodge@broderickgroup.com
ERIC MEUSSNER | (425) 274-4282 | meussner@broderickgroup.com



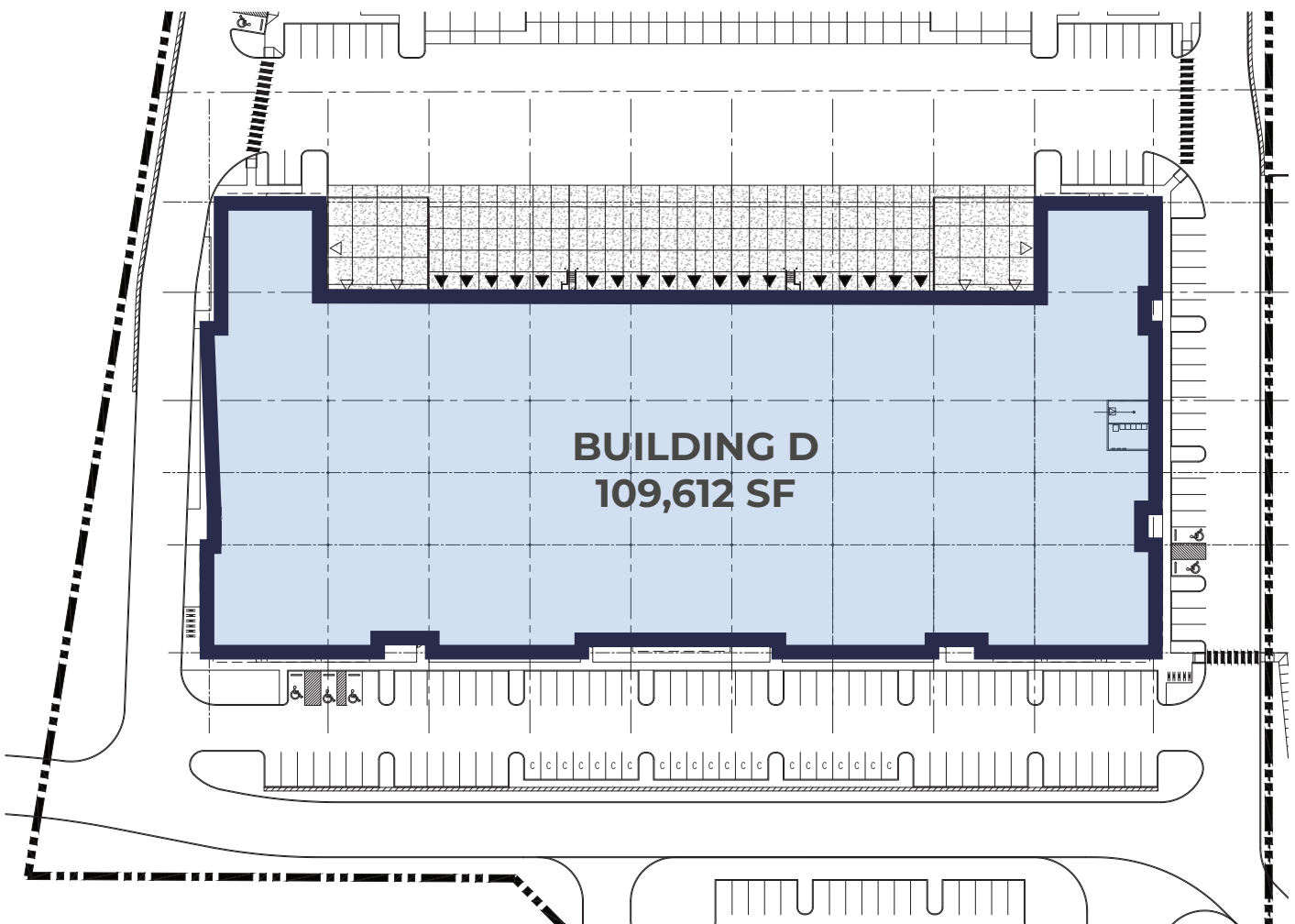


GAYTEWAY

BUSINESS PARK

20100 67TH AVENUE NE
ARLINGTON, WASHINGTON

BUILDING D - 109,612 SF



The information contained herein has been given to us by the owner or other sources that we deem reliable. We have no reason to doubt its accuracy. All prospective tenants should carefully verify the information contained herein.

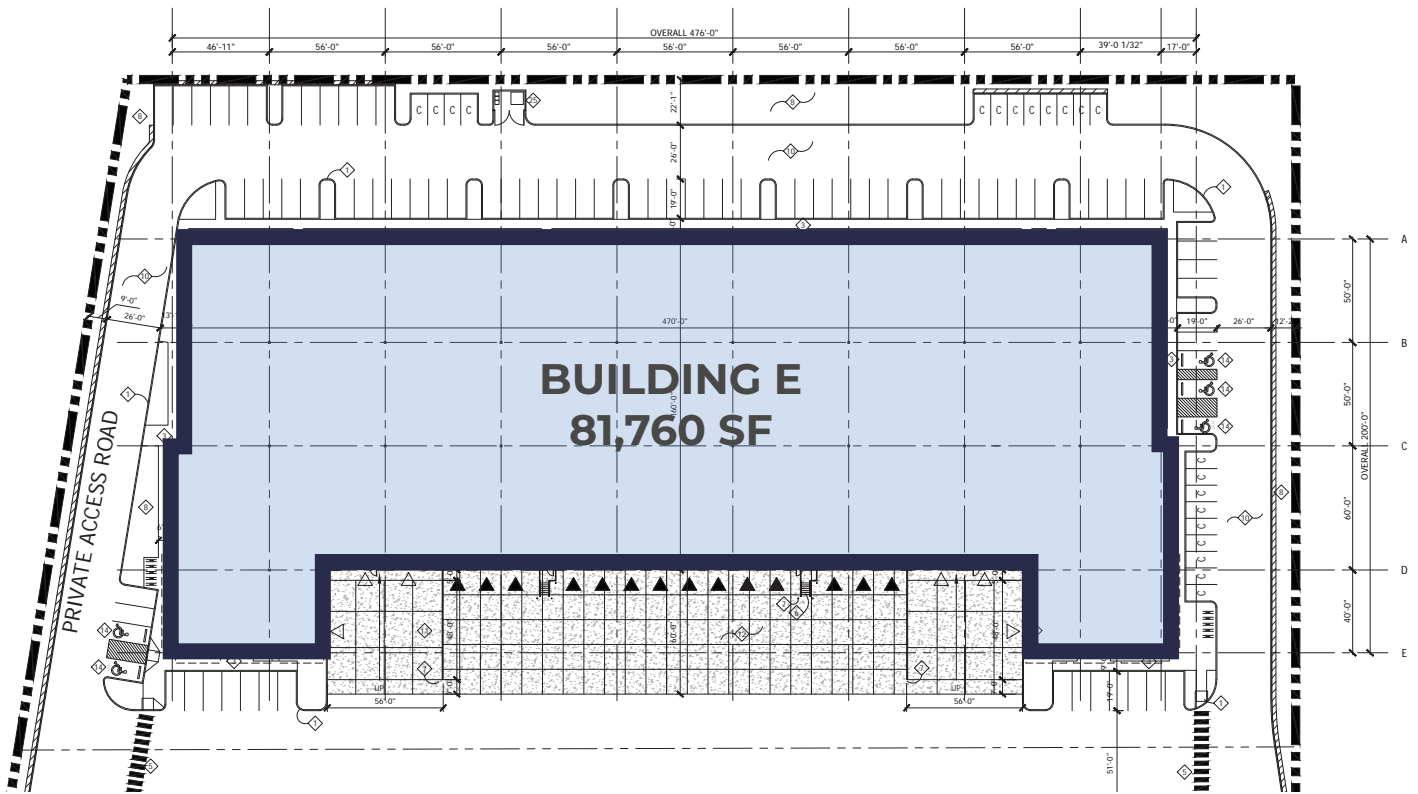


GAYTEWAY

BUSINESS PARK

20100 67TH AVENUE NE
ARLINGTON, WASHINGTON

BUILDING E - 81,760 SF



The information contained herein has been given to us by the owner or other sources that we deem reliable. We have no reason to doubt its accuracy. All prospective tenants should carefully verify the information contained herein.

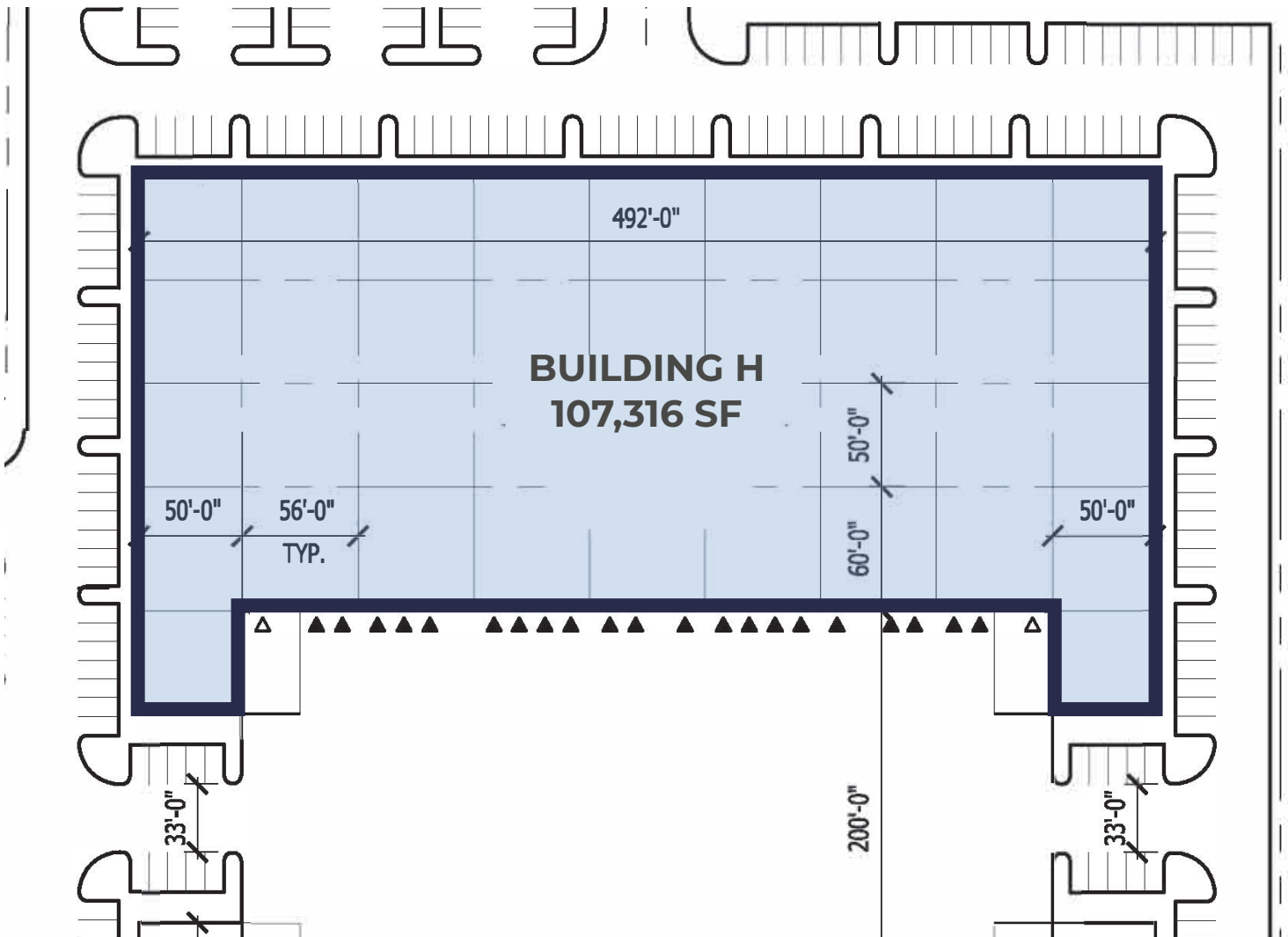


GAYTEWAY

BUSINESS PARK

20100 67TH AVENUE NE
ARLINGTON, WASHINGTON

BUILDING H - 107,316 SF



The information contained herein has been given to us by the owner or other sources that we deem reliable. We have no reason to doubt its accuracy. All prospective tenants should carefully verify the information contained herein.

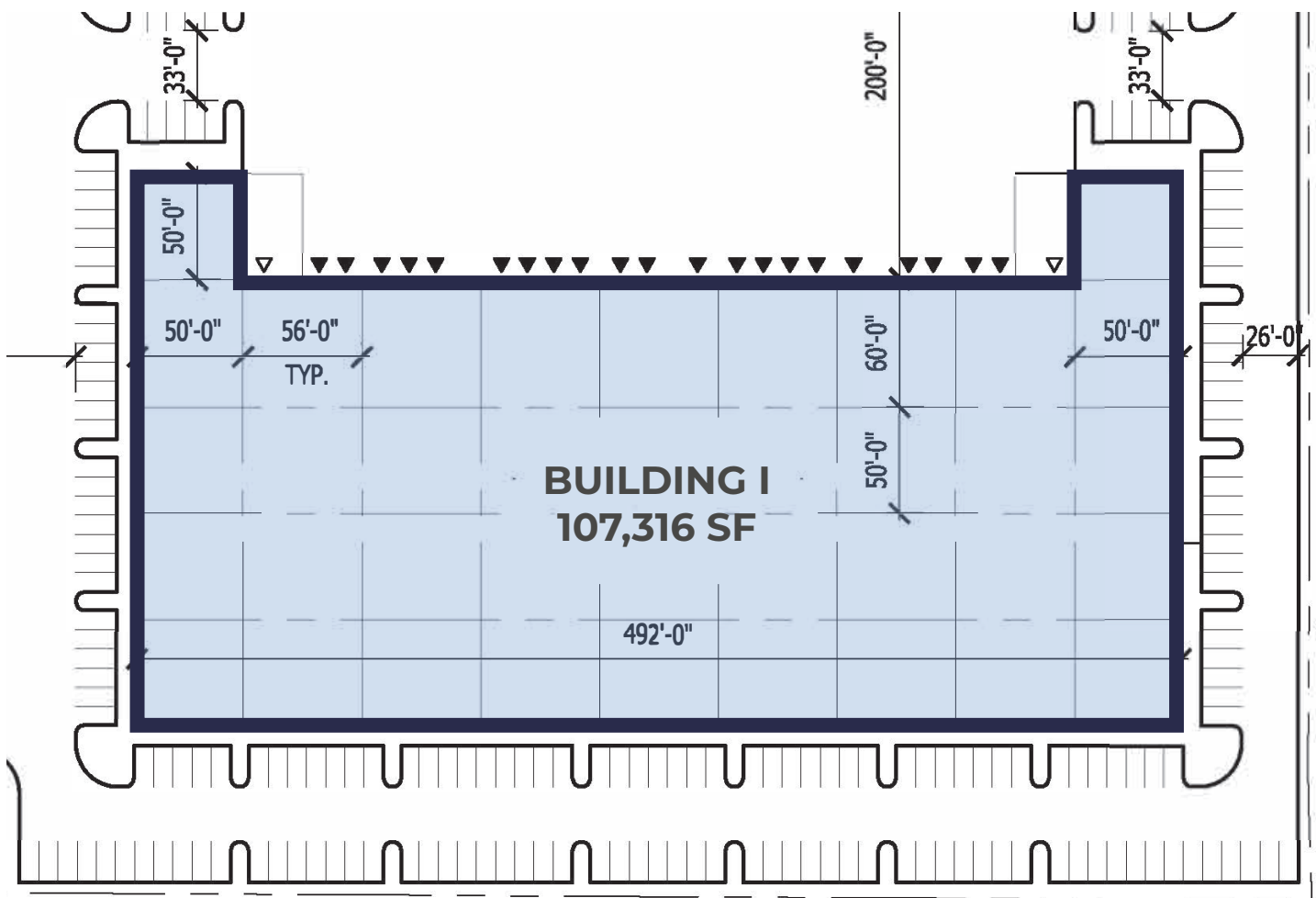


GAYTEWAY

BUSINESS PARK

20100 67TH AVENUE NE
ARLINGTON, WASHINGTON

BUILDING I - 107,316 SF



The information contained herein has been given to us by the owner or other sources that we deem reliable. We have no reason to doubt its accuracy. All prospective tenants should carefully verify the information contained herein.

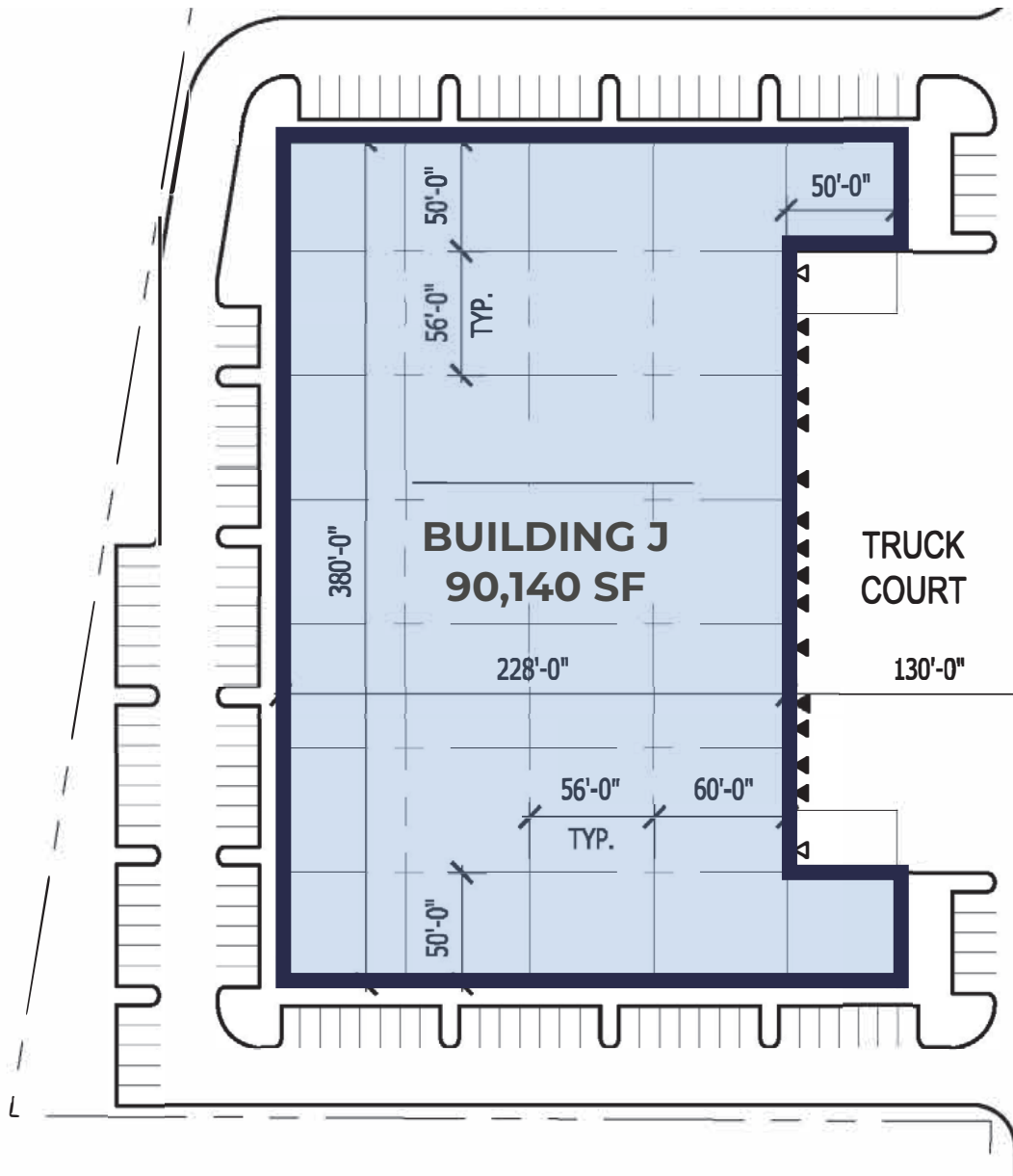


GAYTEWAY

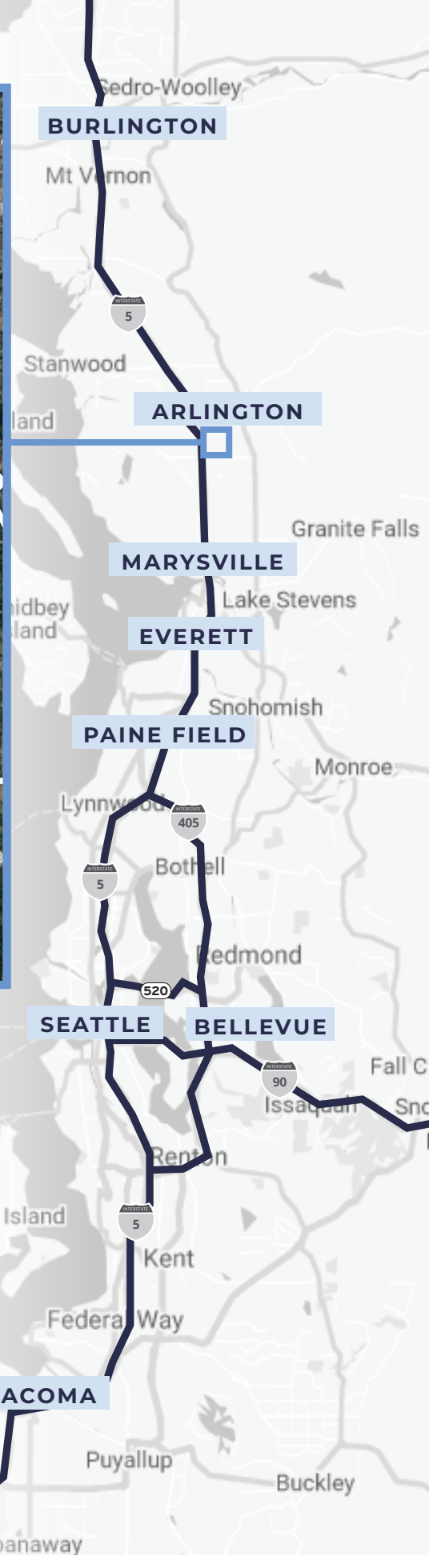
BUSINESS PARK

20100 67TH AVENUE NE
ARLINGTON, WASHINGTON

BUILDING J - 90,140 SF



The information contained herein has been given to us by the owner or other sources that we deem reliable. We have no reason to doubt its accuracy. All prospective tenants should carefully verify the information contained herein.



DRIVE TIMES

PAINE FIELD AIRPORT
24.1 miles / 29 min

EVERETT CBD
16.5 miles / 24 min

PORT OF EVERETT
15.6 miles / 24 min

SEATTLE CBD
44.1 miles / 55 min

SEA-TAC
60.1 miles / 85 min

BELLEVUE CBD
44.4 miles / 55 min

CANADIAN BORDER
75 miles / 78 min