



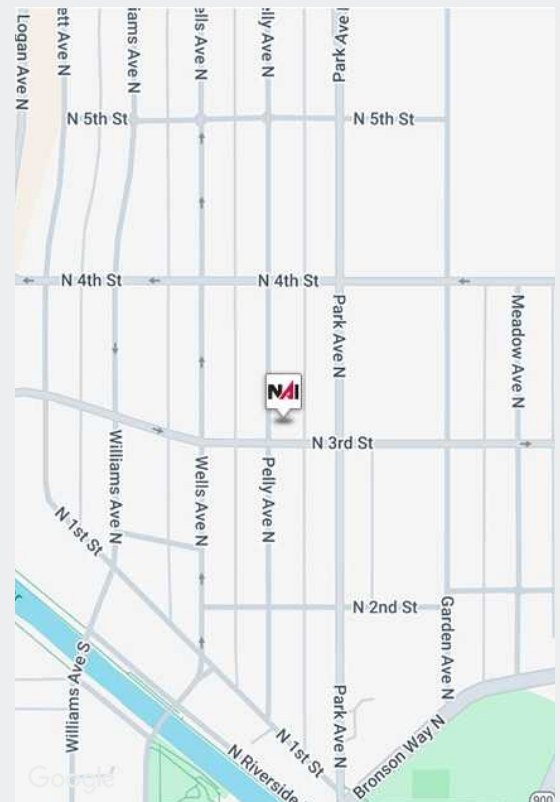
# 300 Pelly Avenue N

Renton, WA 98057

*Renton office space features a welcoming lobby, ample covered parking, secure entry, and customizable interiors.*

## PROPERTY HIGHLIGHTS

- + Suite C
- + 1,240 SF plus common area lobby
- + Elevator, security system, AC
- + Ample parking under the building
- + Interior is unfinished - tenant may choose colors and floor covering
- + \$19.50/SF/YR + \$1,536/MO NNN (2024 ESTIMATE)



**BRUCE GOLDSTEIN**  
Senior Vice President  
+1 425 586 5632  
bgoldstein@nai-ppsp.com

**ITZIK MIZRAHI**  
Partner  
+1 425 586 5637  
imizrahi@nai-ppsp.com



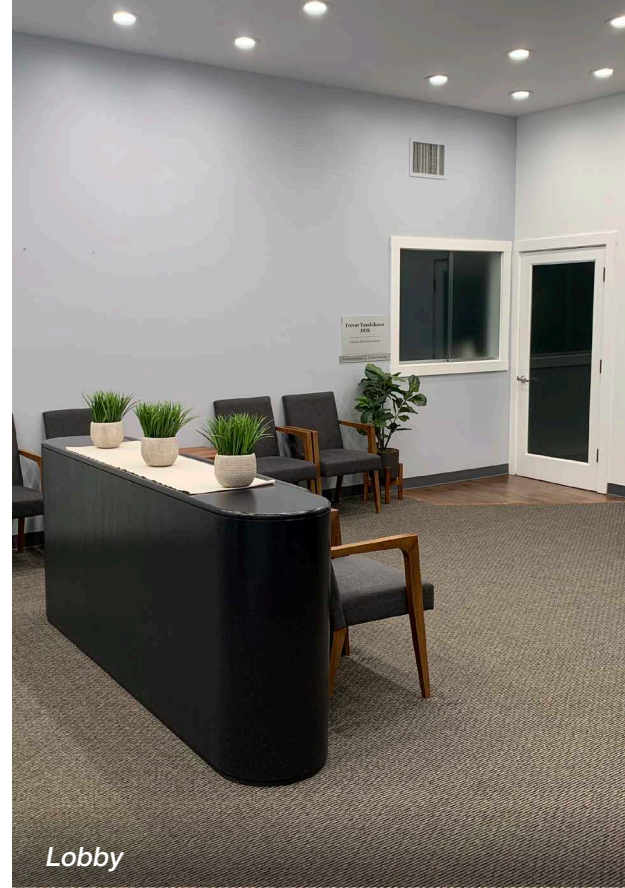
THE INFORMATION CONTAINED HEREIN HAS BEEN GIVEN TO US BY THE OWNER OF THE PROPERTY OR OTHER SOURCES WE DEEM RELIABLE, WE HAVE NO REASON TO DOUBT ITS ACCURACY, BUT WE DO NOT GUARANTEE IT. ALL INFORMATION SHOULD BE VERIFIED PRIOR TO PURCHASE OR LEASE.

[nai-ppsp.com](http://nai-ppsp.com)



Office space in  
Renton

Lobby



Lobby



Interior



Parking

**BRUCE GOLDSTEIN**  
Senior Vice President  
+1 425 586 5632  
bgoldstein@nai-psp.com

**ITZIK MIZRAHI**  
Partner  
+1 425 586 5637  
imizrahi@nai-psp.com

