

For Lease
Industrial

NAIBlack



112 W Pacific Ave

Spokane, Washington 99201

Property Highlights

- Available Space: 21,225 SF ±
- General Commercial Zoning
- Three Floors
- Street Accessible Freight Door
- Storage Bays and Shelving Structures
- 10'-20' Ceiling Height

Property Description

Centrally located in Spokane, this historic building is a 21,225 square foot warehouse property. Offers easy access to I-90, I-405 and SR-904. With nearly 20 storage bays and multiple shelving units.

Lease Rate: \$6,500.00 per month (NNN)



For more information

John Powers

O: 509 622 3563

jpowers@naiblack.com

Eric Weaver

O: 509 623 1000

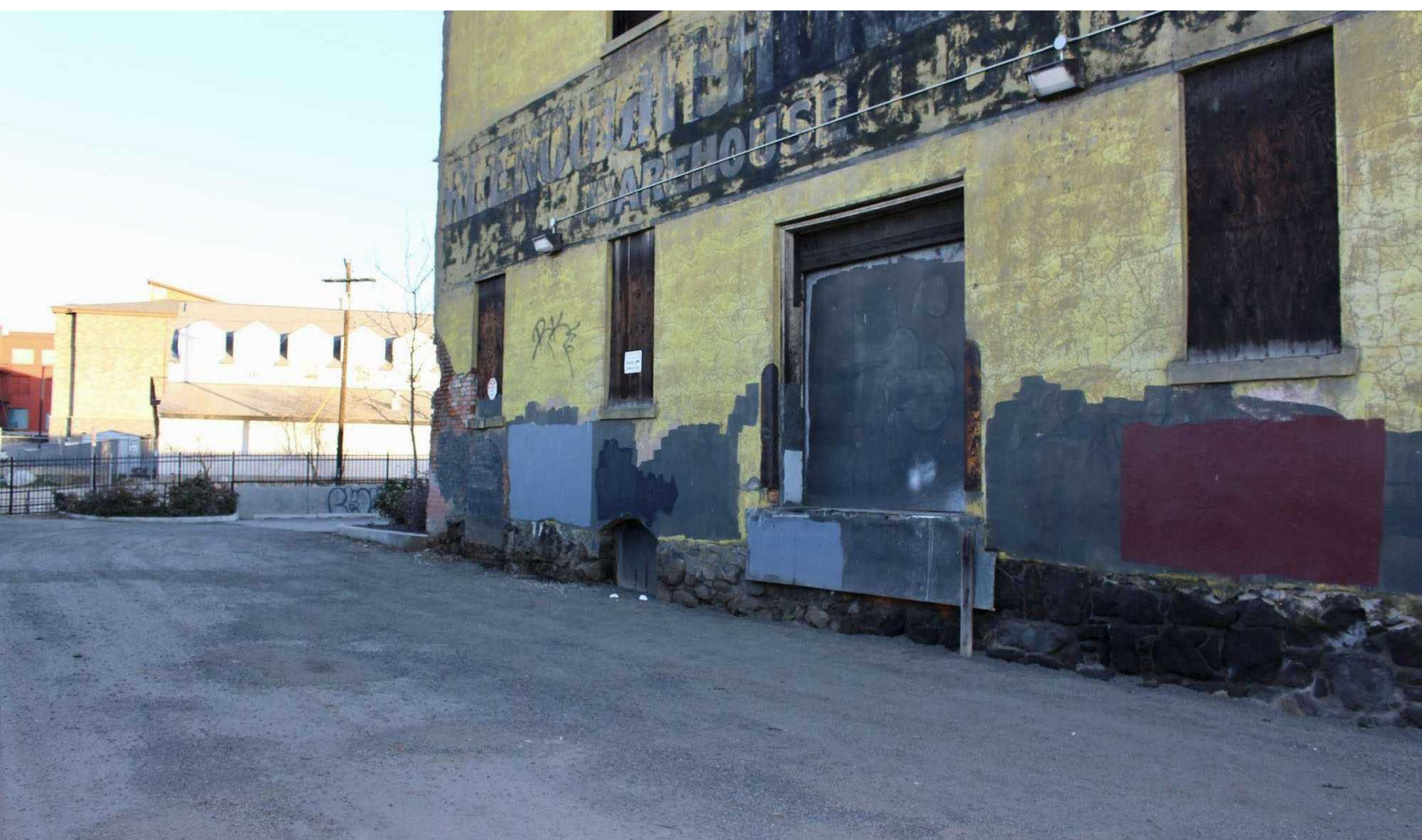
eric.weaver@naiblack.com

No warranty or representation, expression or implied, is made as to the accuracy of the information contained herein, and the same is submitted subject to errors, omissions, change or price, rental or other conditions, prior to sale, lease, financing, or withdrawal without notice, and of special listing conditions imposed by our principals no warranties or representations are made as to the condition of the property or any hazards contained therein or any to be implied.

801 W. Riverside Avenue, Suite 300
Spokane, WA 99201
509 623 1000 tel
naiblack.com

For Lease
Industrial

NAI Black



No warranty or representation, expression or implied, is made as to the accuracy of the information contained herein, and the same is submitted subject to errors, omissions, change or price, rental or other conditions, prior to sale, lease, financing, or withdrawal without notice, and of special listing conditions imposed by our principals no warranties or representations are made as to the condition of the property or any hazards contained therein or any to be implied.

801 W. Riverside Avenue, Suite 300
Spokane, WA 99201
509 623 1000 tel
naiblack.com

For Lease
Industrial

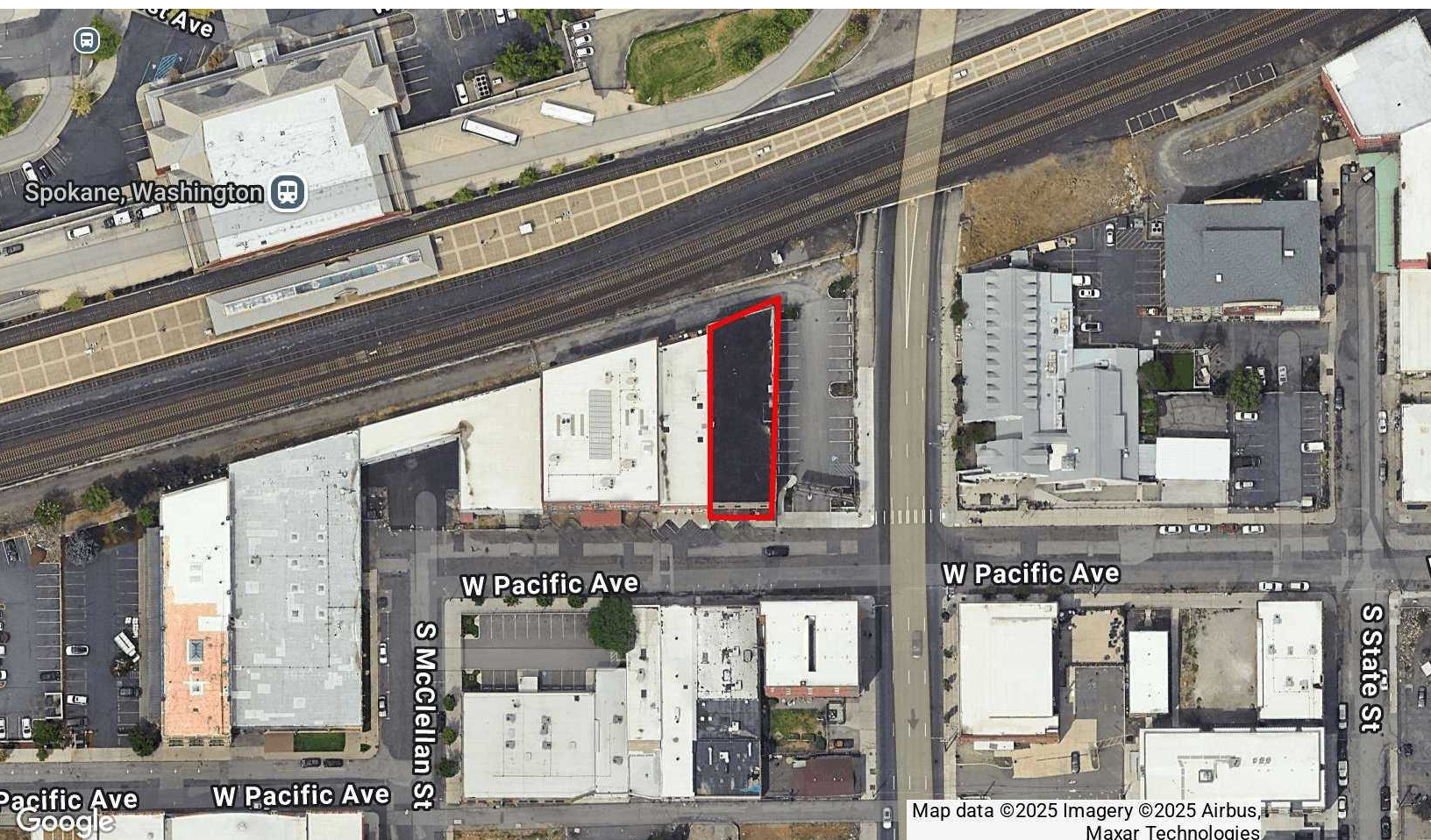
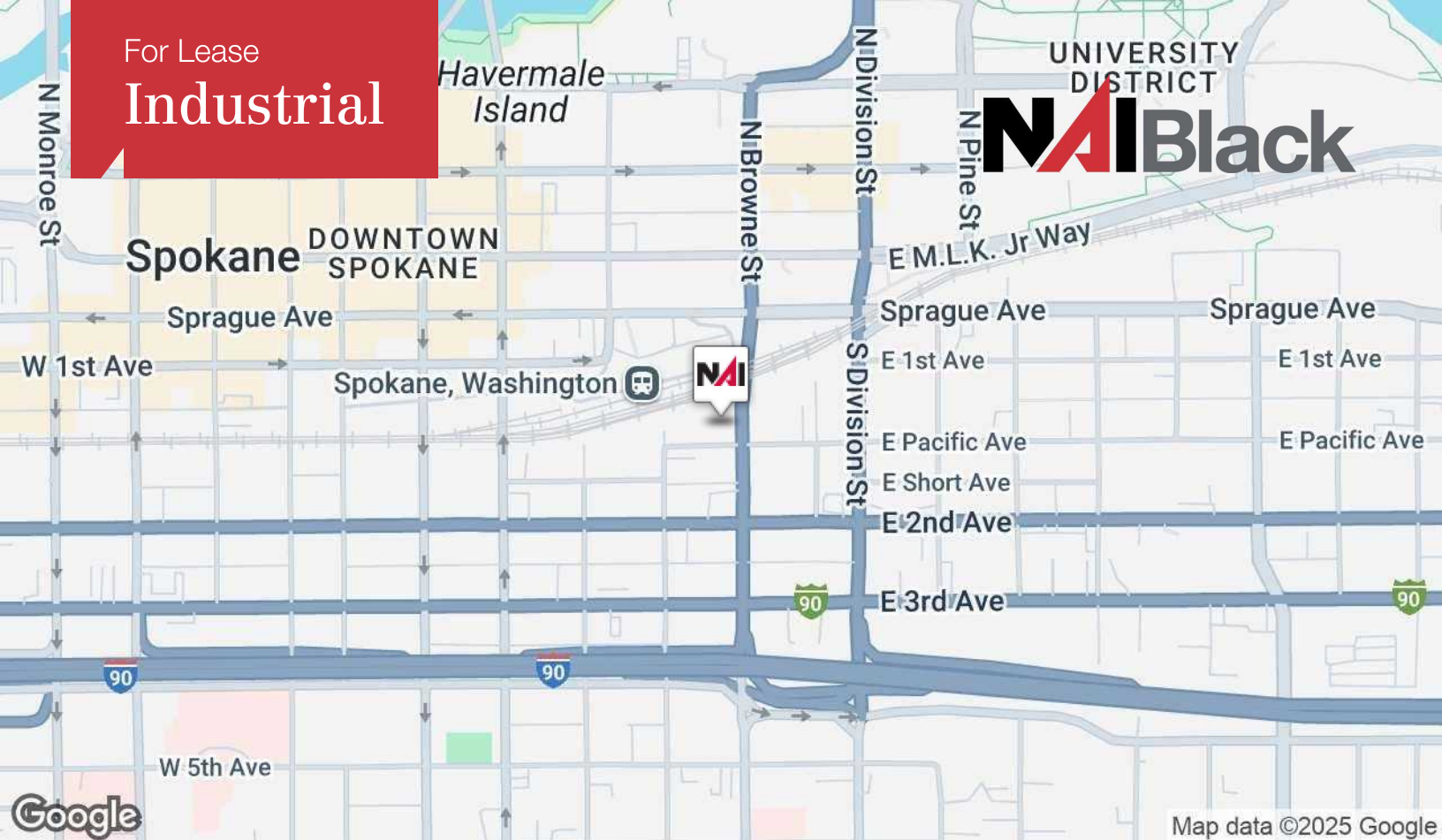
NAI Black



No warranty or representation, expression or implied, is made as to the accuracy of the information contained herein, and the same is submitted subject to errors, omissions, change or price, rental or other conditions, prior to sale, lease, financing, or withdrawal without notice, and of special listing conditions imposed by our principals no warranties or representations are made as to the condition of the property or any hazards contained therein or any to be implied.

801 W. Riverside Avenue, Suite 300
Spokane, WA 99201
509 623 1000 tel
naiblack.com

For Lease
Industrial



No warranty or representation, expression or implied, is made as to the accuracy of the information contained herein, and the same is submitted subject to errors, omissions, change or price, rental or other conditions, prior to sale, lease, financing, or withdrawal without notice, and of special listing conditions imposed by our principals no warranties or representations are made as to the condition of the property or any hazards contained therein or any to be implied.

801 W. Riverside Avenue, Suite 300
Spokane, WA 99201
509 623 1000 tel
naiblack.com



Population	1 Mile	3 Miles	5 Miles
Total Population	14,391	120,007	234,968
Average Age	46	45	41
Average Age (Male)	46	45	41
Average Age (Female)	45	45	41

Households & Income	1 Mile	3 Miles	5 Miles
Total Households	7,161	50,811	97,781
# of Persons per HH	1.57	2.21	2.32
Average HH Income	\$65,321	\$85,603	\$91,001
Average House Value	\$324,833	\$392,315	\$481,328

Demographics data derived from Esri forecast for 2024

