

Office Building For Lease

// EMPIRE STATE BUILDING

905 W. Riverside Ave, Spokane, WA 99201

[View Drone Footage!](#)



// PRESENTED BY:

ALICIA BARBIERI

VICE PRESIDENT

509.344.4902

ABARBIERI@G-B.COM

JJ ROBBINS

COMMERCIAL BROKER & LEASING MANAGER

509.344.4915

JJ.ROBBINS@G-B.COM



// PROPERTY SUMMARY



PROPERTY DESCRIPTION

The Empire State Building is a charming building with historical character located in the heart of Downtown Spokane. The property is directly across from the Federal Building and Post Office, and is only one block from RiverPark Square. This office building offers classic views of downtown and is within walking distance of Riverfront Park.

PROPERTY FEATURES

- Historic Building of Class and Character
- Janitorial Services Included
- Prime Downtown Location
- Building Conference Room
- Building Lounge/Break Room
- 24/7 Secured Access

SPACES	LEASE RATE	SPACE SIZE
Suite 101	\$2,700 per month	1,845 SF
Suite 214	\$400 per month	265 SF
Suite 302	\$705 per month	488 SF
Suite 316	\$575 per month	400 SF
Suite 507	\$480 per month	325 SF
Suite 508	\$836 per month	590 SF
Suite 612	\$550 per month	382 SF

DEMOGRAPHICS	1 MILE	3 MILES	5 MILES
Total Households	6,911	47,628	104,351
Total Population	12,789	108,742	241,950
Average HH Income	\$36,869	\$50,636	\$51,349

// PRESENTED BY:

ALICIA BARBIERI
VICE PRESIDENT
509.344.4902

ABARBIERI@G-B.COM

JJ ROBBINS
COMMERCIAL BROKER & LEASING MANAGER
509.344.4915

JJ.ROBBINS@G-B.COM



// ADDITIONAL PHOTOS



// PRESENTED BY:

ALICIA BARBIERI

VICE PRESIDENT

509.344.4902

ABARBIERI@G-B.COM

JJ ROBBINS

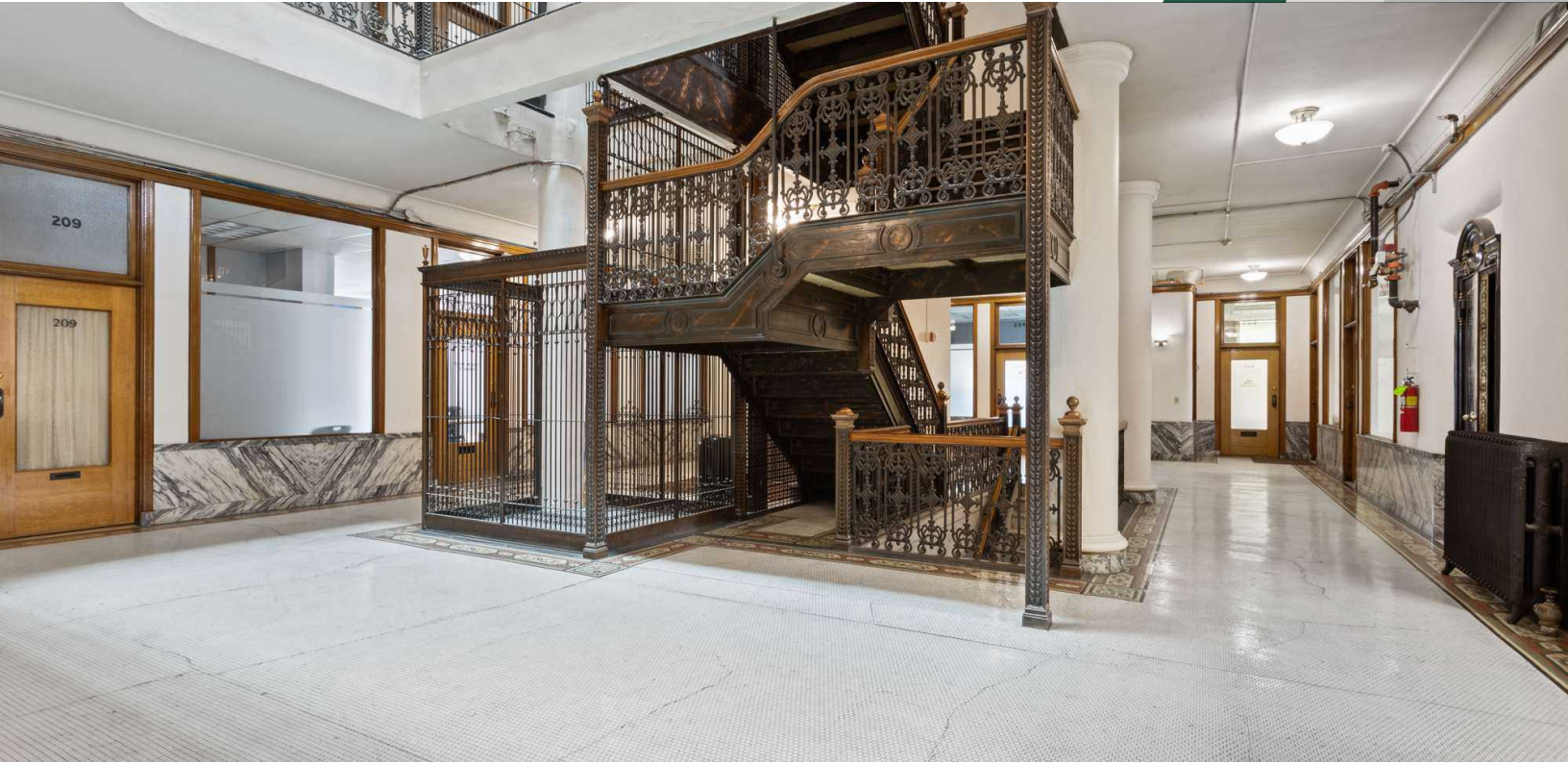
COMMERCIAL BROKER & LEASING MANAGER

509.344.4915

JJ.ROBBINS@G-B.COM



// ADDITIONAL PHOTOS



// PRESENTED BY:

ALICIA BARBIERI
VICE PRESIDENT
509.344.4902
ABARBIERI@G-B.COM

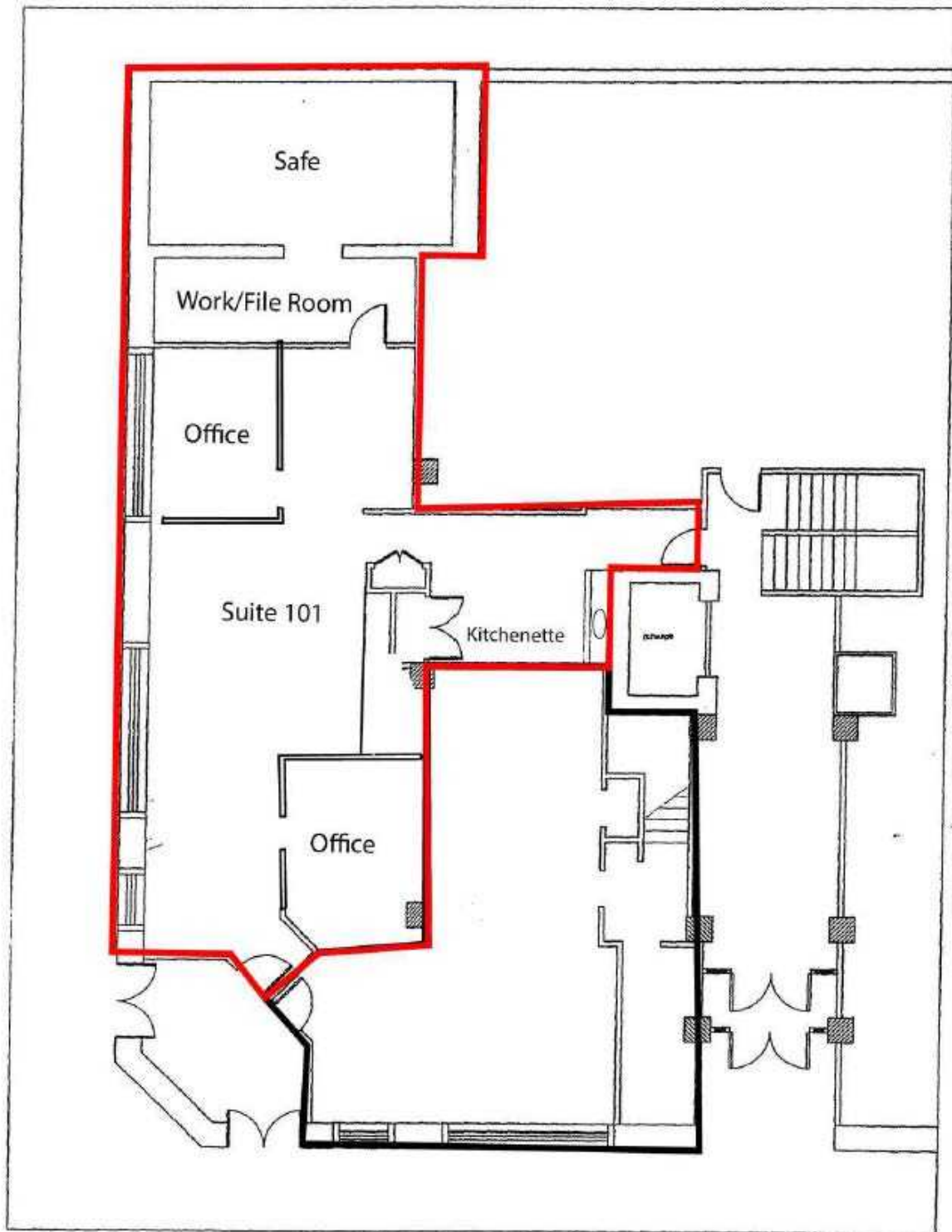
JJ ROBBINS
COMMERCIAL BROKER & LEASING MANAGER
509.344.4915
JJ.ROBBINS@G-B.COM



// FLOOR 1



Lincoln St.



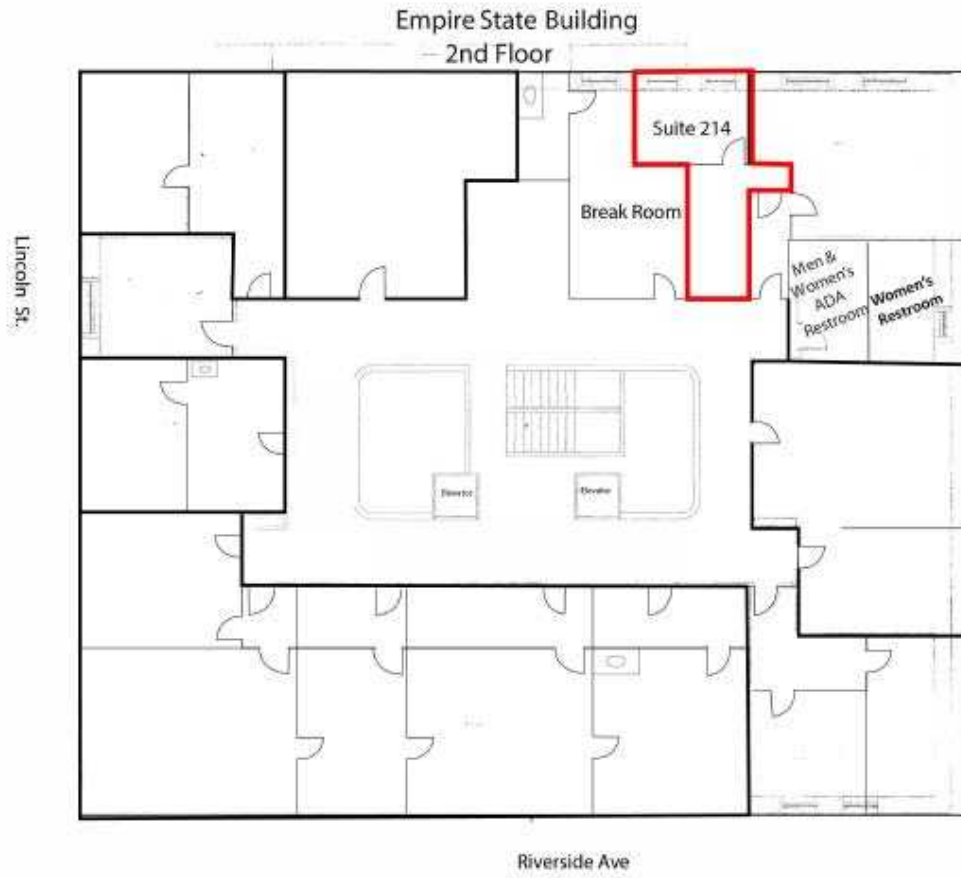
// PRESENTED BY:

ALICIA BARBIERI
VICE PRESIDENT
509.344.4902
ABARBIERI@G-B.COM

JJ ROBBINS
COMMERCIAL BROKER & LEASING MANAGER
509.344.4915
JJ.ROBBINS@G-B.COM



// FLOOR 2



// PRESENTED BY:

ALICIA BARBIERI
VICE PRESIDENT
509.344.4902
ABARBIERI@G-B.COM

JJ ROBBINS
COMMERCIAL BROKER & LEASING MANAGER
509.344.4915
JJ.ROBBINS@G-B.COM



// FLOOR 3



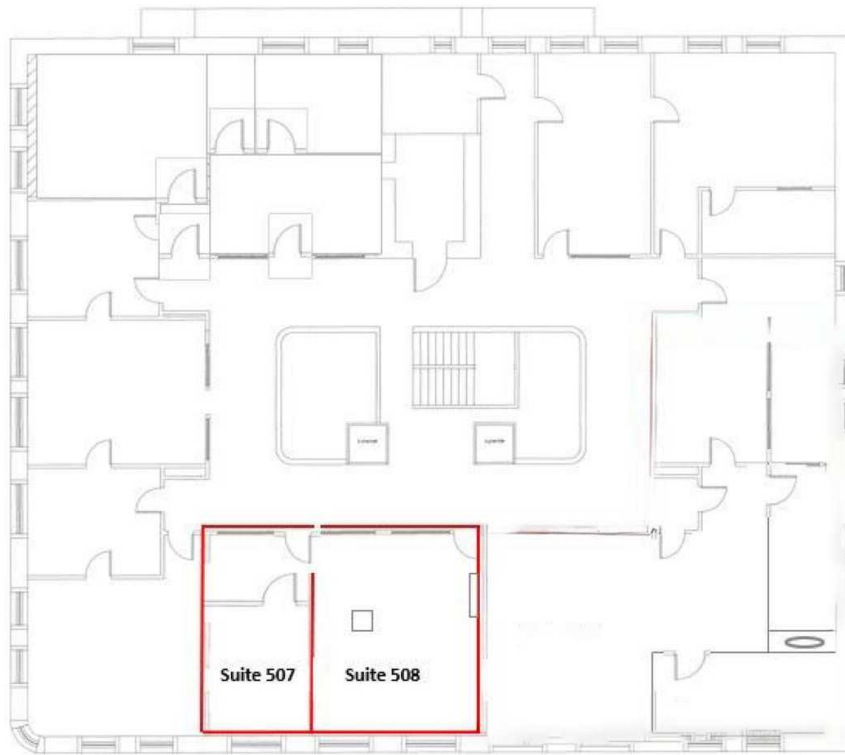
// PRESENTED BY:

ALICIA BARBIERI
VICE PRESIDENT
509.344.4902
ABARBIERI@G-B.COM

JJ ROBBINS
COMMERCIAL BROKER & LEASING MANAGER
509.344.4915
JJ.ROBBINS@G-B.COM



// FLOOR 5



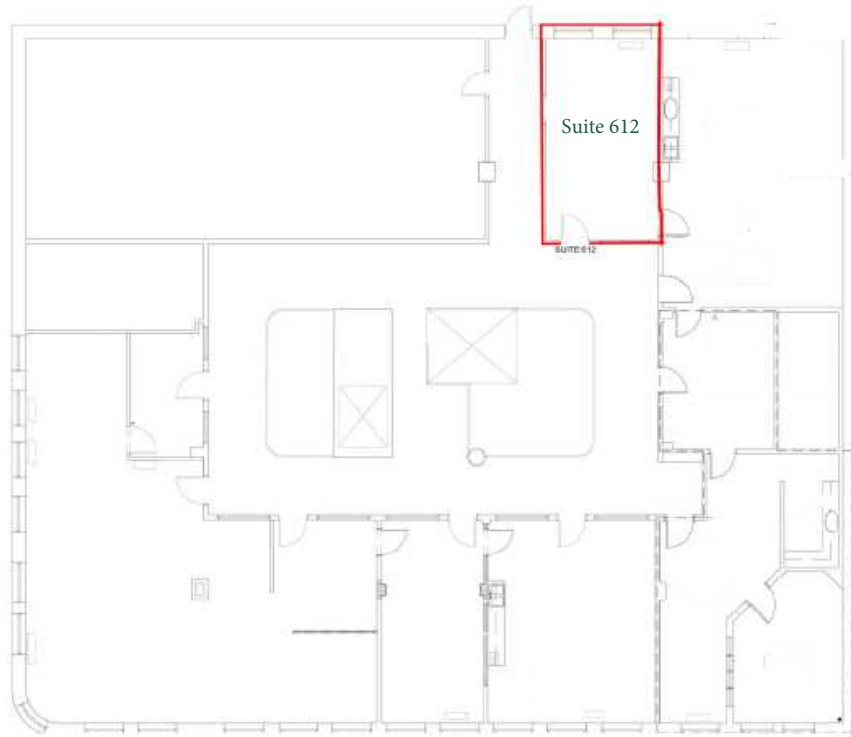
// PRESENTED BY:

ALICIA BARBIERI
VICE PRESIDENT
509.344.4902
ABARBIERI@G-B.COM

JJ ROBBINS
COMMERCIAL BROKER & LEASING MANAGER
509.344.4915
JJ.ROBBINS@G-B.COM



// FLOOR 6



// PRESENTED BY:

ALICIA BARBIERI
VICE PRESIDENT

509.344.4902

ABARBIERI@G-B.COM

JJ ROBBINS

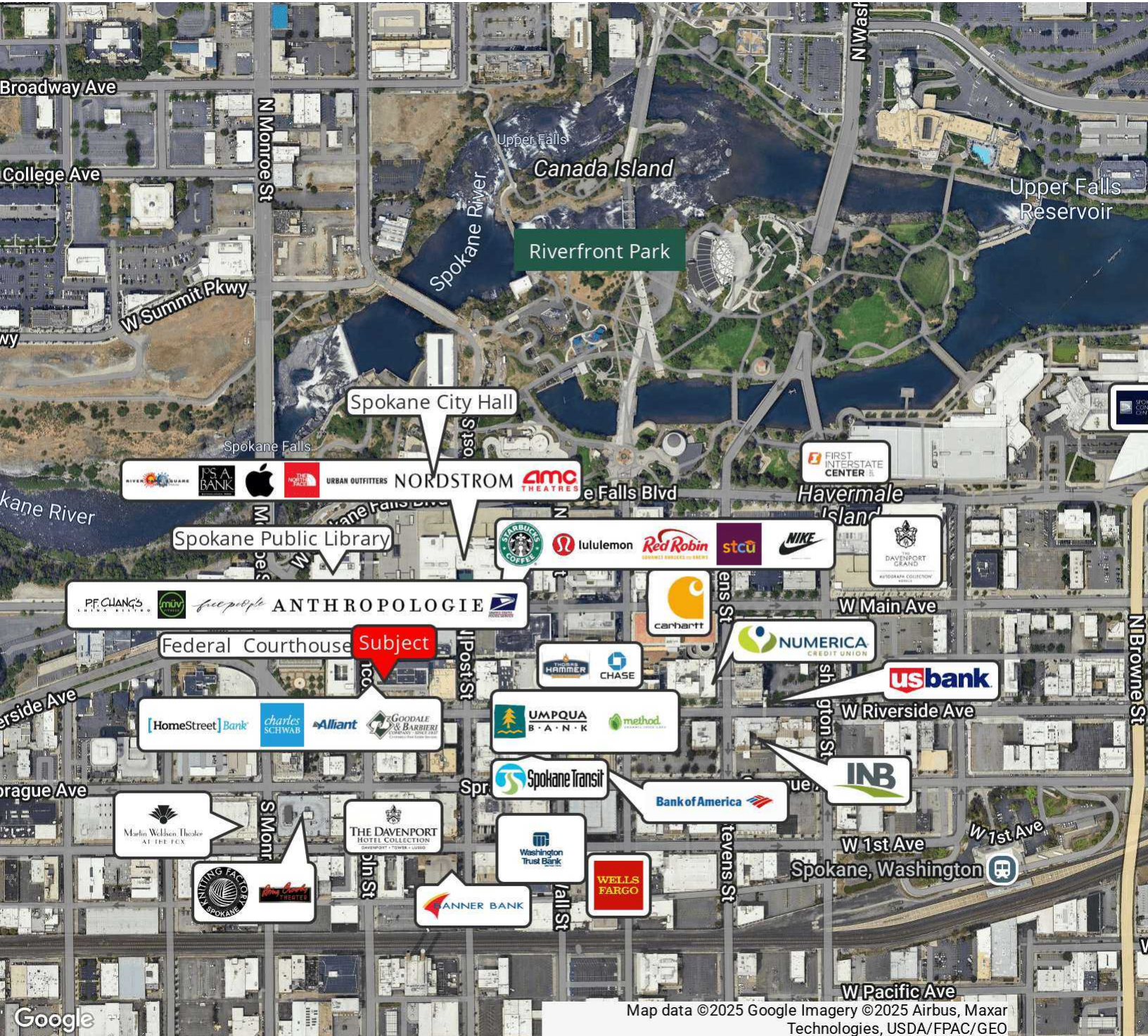
COMMERCIAL BROKER & LEASING MANAGER

509.344.4915

JJ.ROBBINS@G-B.COM



// ESB RETAILER MAP



// PRESENTED BY:

ALICIA BARBIERI
VICE PRESIDENT
509.344.4902
ABARBIERI@G-B.COM

JJ ROBBINS
COMMERCIAL BROKER & LEASING MANAGER
509.344.4915
JJ.ROBBINS@G-B.COM

