

# 70 DOOR CROSS-DOCK ON 12.46± ACRES FOR LEASE

13704 Airport Way, Portland, OR 97203



Andrew Kemmerer  
Broker  
425.281.3646  
[akemmerer@burrtemkin.com](mailto:akemmerer@burrtemkin.com)

Garett Hall  
Broker  
360.259.8790  
[ghall@burrtemkin.com](mailto:ghall@burrtemkin.com)

Richard L. Burr  
Broker Of Record  
OR License#201245177

Jim Kemmerer  
Principal  
800.778.2303  
[kemmerer@burrtemkin.com](mailto:kemmerer@burrtemkin.com)

Owned & Operated By  
**LBA**Logistics 



# 70 DOOR CROSS-DOCK ON 12.46± ACRES

## AVAILABLE FOR LEASE

13704 NE Airport Way, Portland, OR 97203



### LOCATION HIGHLIGHTS

The property is well located in the East Columbia Corridor, east of I-205 (access via NE Airport Way), and north of I-84. The property is zoned IG2-General Industrial 2 (view code [here](#)). The current use is permitted outright under this zoning designation.



### KEY ACCESS POINTS



3± Miles



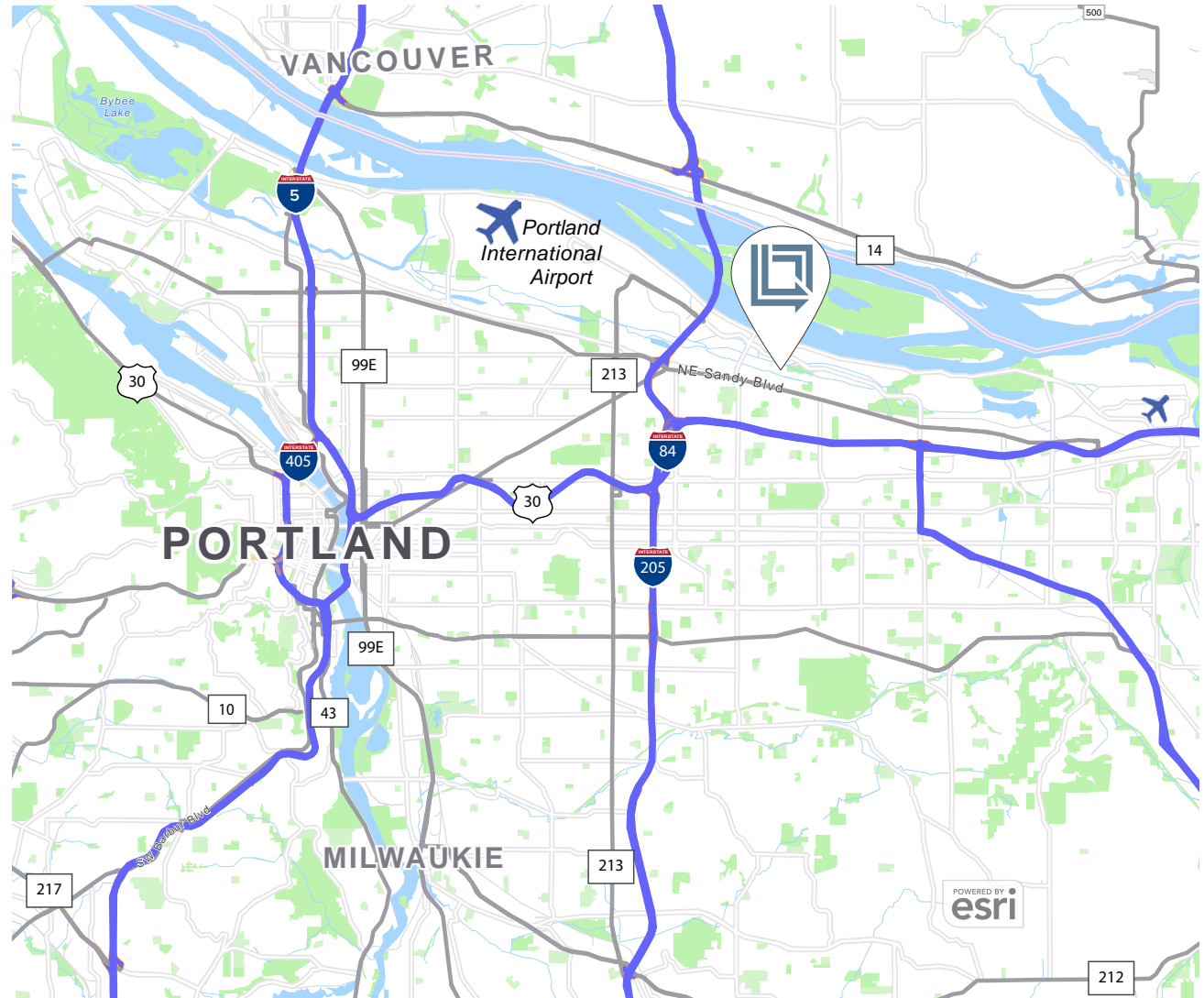
1.9± Miles



4.2± Miles



10± Miles



**Burr & Temkin**  
TRANSPORTATION REAL ESTATE SPECIALISTS SINCE 1983

Andrew Kemmerer  
**Broker**  
425.281.3646  
[akemmerer@burrtemkin.com](mailto:akemmerer@burrtemkin.com)

Garett Hall  
**Broker**  
360.259.8790  
[ghall@burrtemkin.com](mailto:ghall@burrtemkin.com)

Richard L. Burr  
**Broker Of Record**  
OR License#201245177

Jim Kemmerer  
**Principal**  
800.778.2303  
[kemmerer@burrtemkin.com](mailto:kemmerer@burrtemkin.com)

Owned & Operated By  
**LBA Logistics**

# 70 DOOR CROSS-DOCK ON 12.46± ACRES

## AVAILABLE FOR LEASE

13704 NE Airport Way, Portland, OR 97203



### SITE INFORMATION

#### DOCK

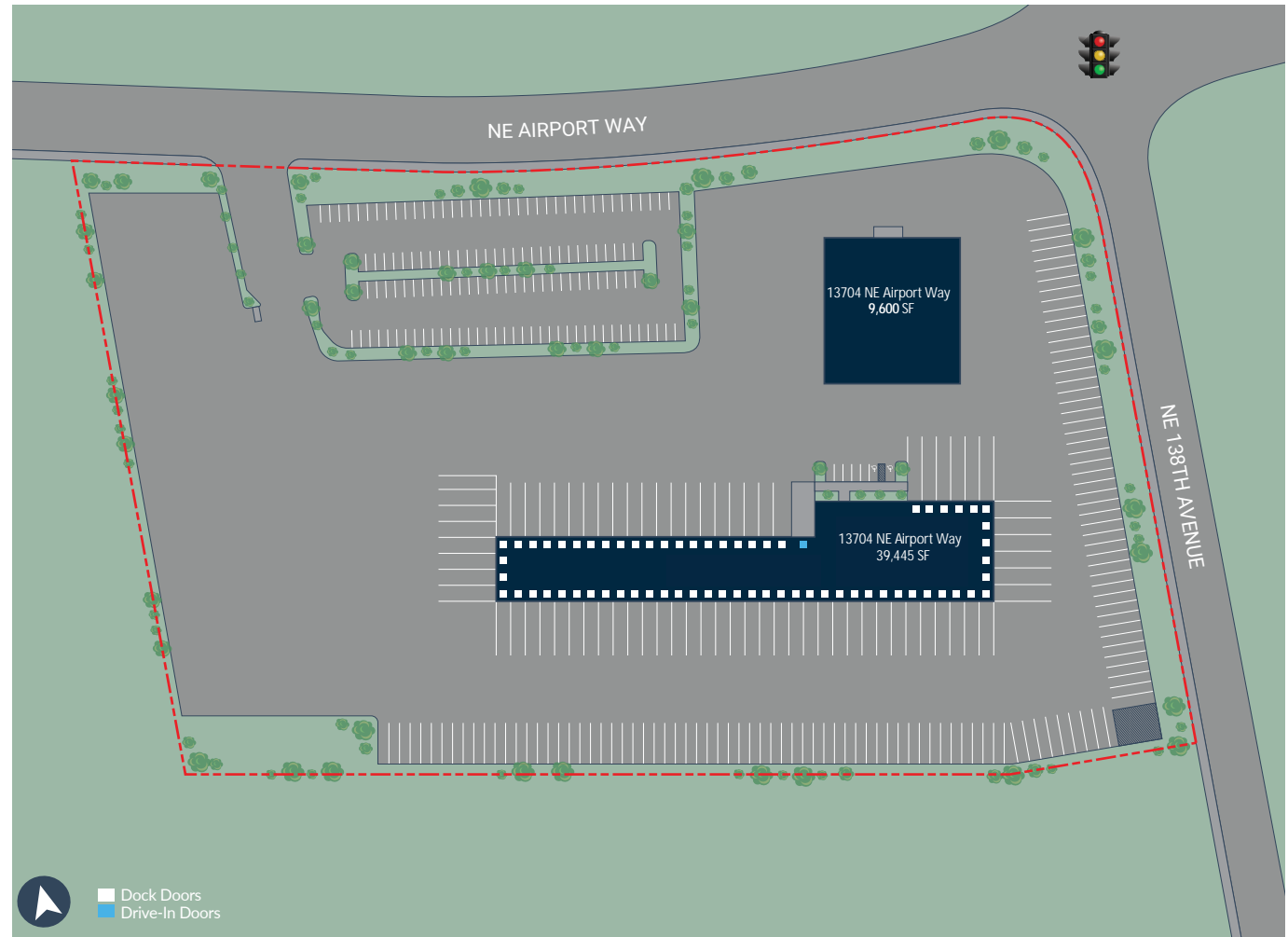
- 34,042± SF Total
- 70 Dock Doors
- 16' Clear Height
- 7,013± SF 2-Story Office

#### SHOP

- 9,600± SF Total
- 2 Drive-Through Bays
- 2 Lane Fuel Canopy & Wash Bay
- Office & Parts Room

#### SITE

- 12.46± SF
- Fully Improved
- 8% Coverage Ratio
- Concrete & Asphalt Paved
- Fenced & Lit
- Outdoor Storage & Trailer Parking Permitted
- 195 Trailer Stalls
- 115 Auto Parking Stalls



**Burr & Temkin**  
TRANSPORTATION REAL ESTATE SPECIALISTS SINCE 1983

Andrew Kemmerer  
**Broker**  
425.281.3646  
[akemmerer@burrtemkin.com](mailto:akemmerer@burrtemkin.com)

Garett Hall  
**Broker**  
360.259.8790  
[ghall@burrtemkin.com](mailto:ghall@burrtemkin.com)

Richard L. Burr  
**Broker Of Record**  
OR License#201245177

Jim Kemmerer  
**Principal**  
800.778.2303  
[kemmerer@burrtemkin.com](mailto:kemmerer@burrtemkin.com)

Owned & Operated By  
**LBA Logistics**



# PREMIUM CONCRETE TILT-UP CONSTRUCTION PORTLAND'S PREMIER CROSS-DOCK

13704 NE Airport Way, Portland, OR 97203



**Burr & Temkin**  
TRANSPORTATION REAL ESTATE SPECIALISTS SINCE 1983

Andrew Kemmerer  
**Broker**  
425.281.3646  
[akemmerer@burrtemkin.com](mailto:akemmerer@burrtemkin.com)

Garett Hall  
**Broker**  
360.259.8790  
[ghall@burrtemkin.com](mailto:ghall@burrtemkin.com)

Richard L. Burr  
**Broker Of Record**  
OR License#201245177

Jim Kemmerer  
**Principal**  
800.778.2303  
[kemmerer@burrtemkin.com](mailto:kemmerer@burrtemkin.com)

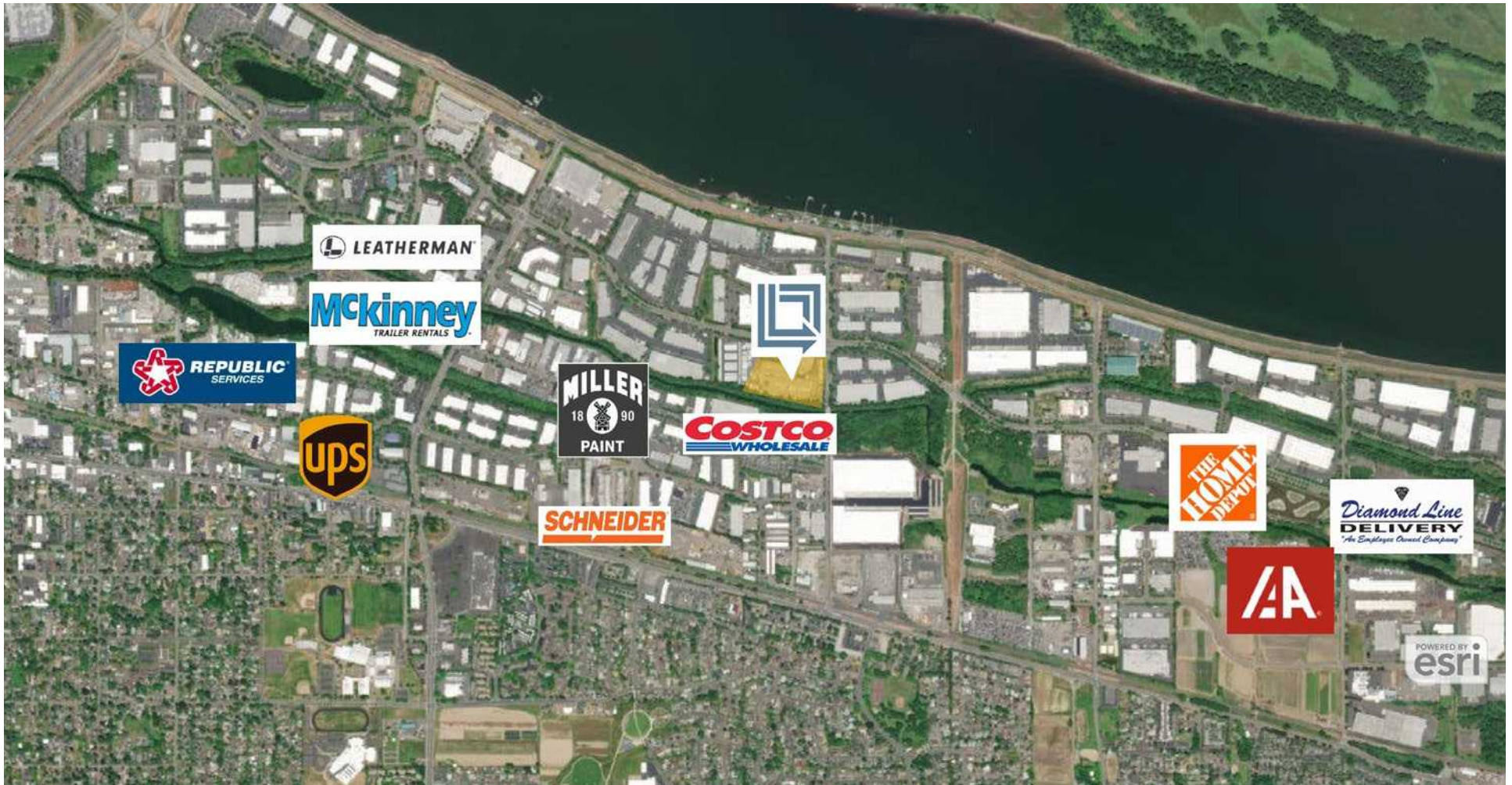
Owned & Operated By  
**LBA Logistics**

This statement is based upon information we believe to be correct and is obtained from sources we regard as reliable, but we assume no liability for errors or omissions therein.



# NEIGHBORING BUSINESSES

13704 NE Airport Way, Portland, OR 97203



**Burr & Temkin**  
TRANSPORTATION REAL ESTATE SPECIALISTS SINCE 1983

Andrew Kemmerer  
Broker  
425.281.3646  
[akemmerer@burrtemkin.com](mailto:akemmerer@burrtemkin.com)

Garett Hall  
Broker  
360.259.8790  
[ghall@burrtemkin.com](mailto:ghall@burrtemkin.com)

Richard L. Burr  
Broker Of Record  
OR License#201245177

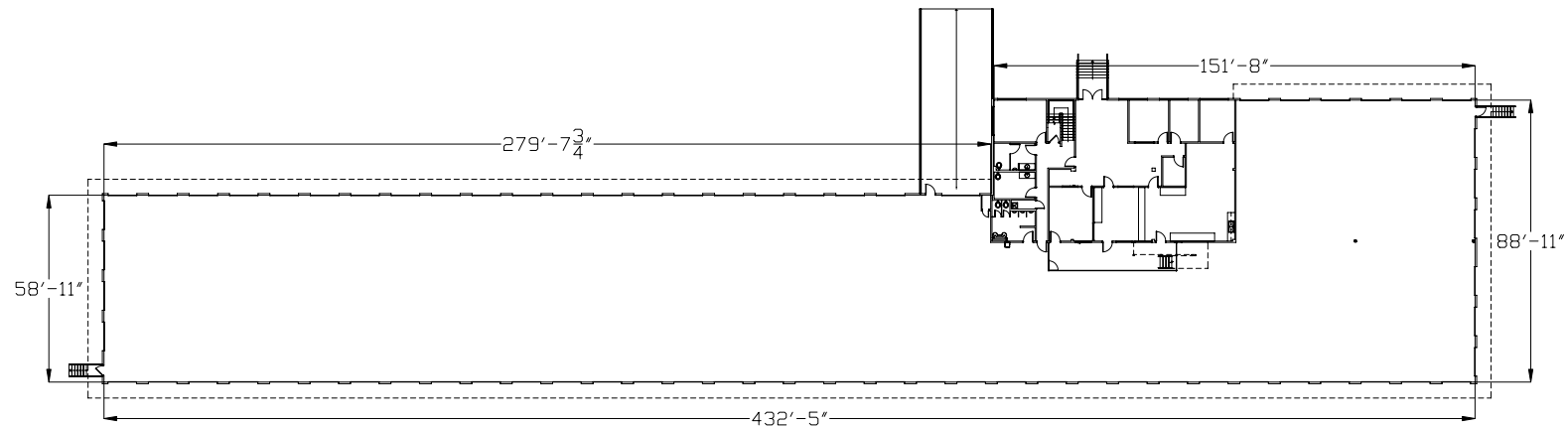
Jim Kemmerer  
Principal  
800.778.2303  
[kemmerer@burrtemkin.com](mailto:kemmerer@burrtemkin.com)

Owned & Operated By  
**LBA Logistics**

# TERMINAL FLOOR PLAN

13704 NE Airport Way, Portland, OR 97203

## DOCK WITH 2-STORY OFFICE



**Burr & Temkin**  
TRANSPORTATION REAL ESTATE SPECIALISTS SINCE 1983

Andrew Kemmerer  
**Broker**  
425.281.3646  
[akemmerer@burrtemkin.com](mailto:akemmerer@burrtemkin.com)

Garett Hall  
**Broker**  
360.259.8790  
[ghall@burrtemkin.com](mailto:ghall@burrtemkin.com)

Richard L. Burr  
**Broker Of Record**  
OR License#201245177

Jim Kemmerer  
**Principal**  
800.778.2303  
[kemmerer@burrtemkin.com](mailto:kemmerer@burrtemkin.com)

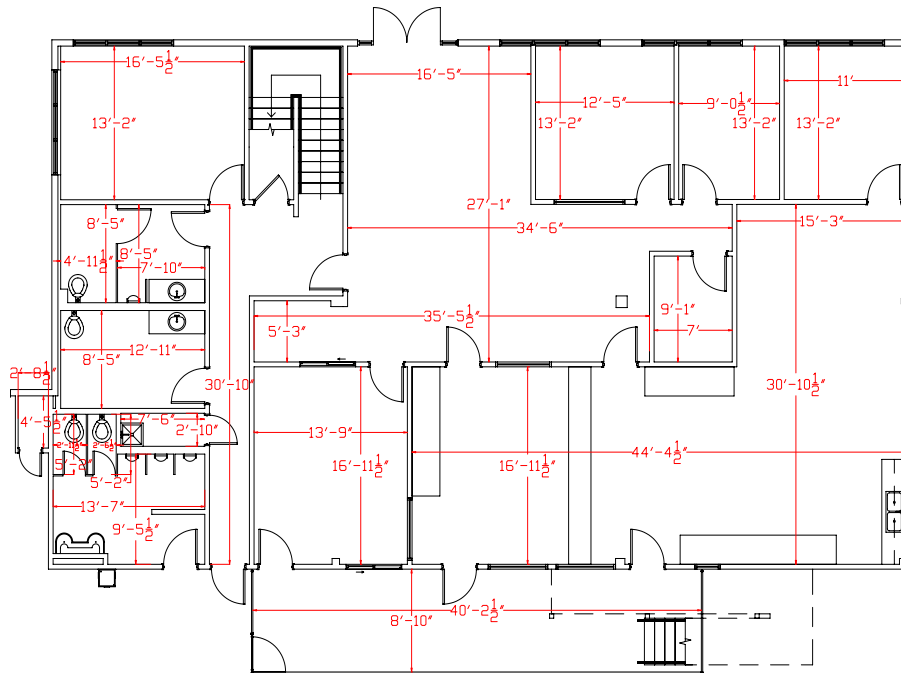
Owned & Operated By  
**LBA Logistics**



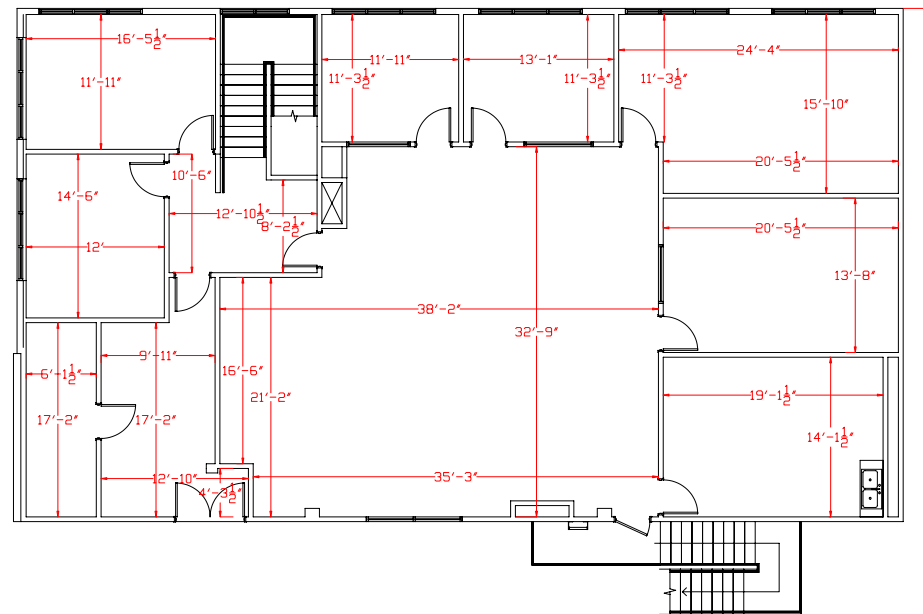
# 2-STORY TERMINAL OFFICE FLOOR PLAN

13704 NE Airport Way, Portland, OR 97203

## 1ST FLOOR



## 2ND FLOOR



**Burr & Temkin**  
TRANSPORTATION REAL ESTATE SPECIALISTS SINCE 1983

Andrew Kemmerer  
Broker  
425.281.3646  
[akemmerer@burrtemkin.com](mailto:akemmerer@burrtemkin.com)

Garett Hall  
Broker  
360.259.8790  
[ghall@burrtemkin.com](mailto:ghall@burrtemkin.com)

Richard L. Burr  
Broker Of Record  
OR License#201245177

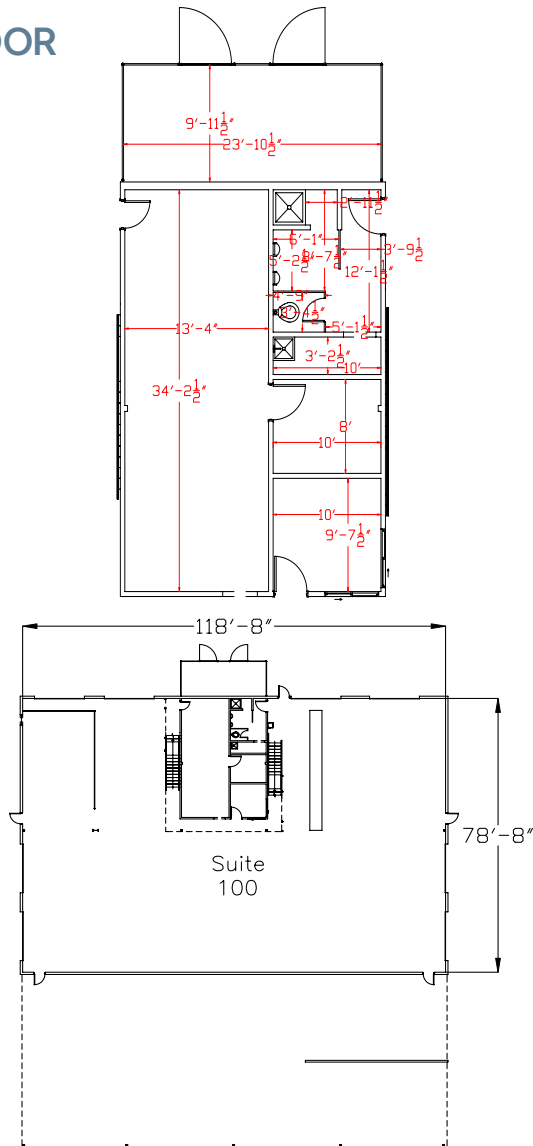
Jim Kemmerer  
Principal  
800.778.2303  
[kemmerer@burrtemkin.com](mailto:kemmerer@burrtemkin.com)

Owned & Operated By  
**LBA**Logistics

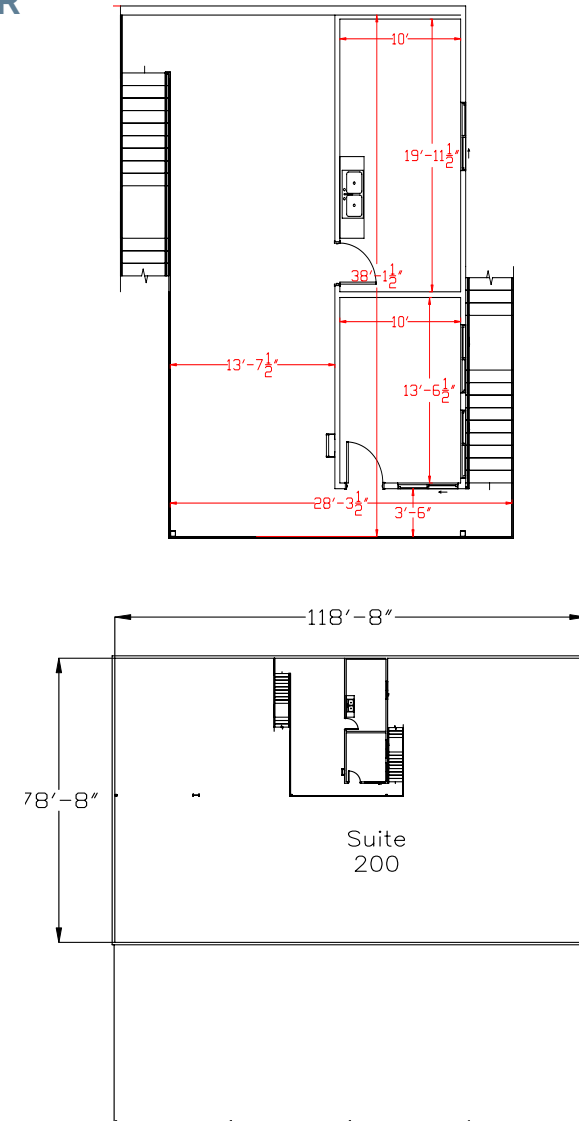
# MAINTENANCE FACILITY WITH 2-STORY OFFICE FLOOR PLAN

13704 NE Airport Way, Portland, OR 97203

## 1ST FLOOR



## 2ND FLOOR



**Burr & Temkin**  
TRANSPORTATION REAL ESTATE SPECIALISTS SINCE 1983

Andrew Kemmerer  
Broker  
425.281.3646  
[akemmerer@burrtemkin.com](mailto:akemmerer@burrtemkin.com)

Garett Hall  
Broker  
360.259.8790  
[ghall@burrtemkin.com](mailto:ghall@burrtemkin.com)

Richard L. Burr  
Broker Of Record  
OR License#201245177

Jim Kemmerer  
Principal  
800.778.2303  
[kemmerer@burrtemkin.com](mailto:kemmerer@burrtemkin.com)

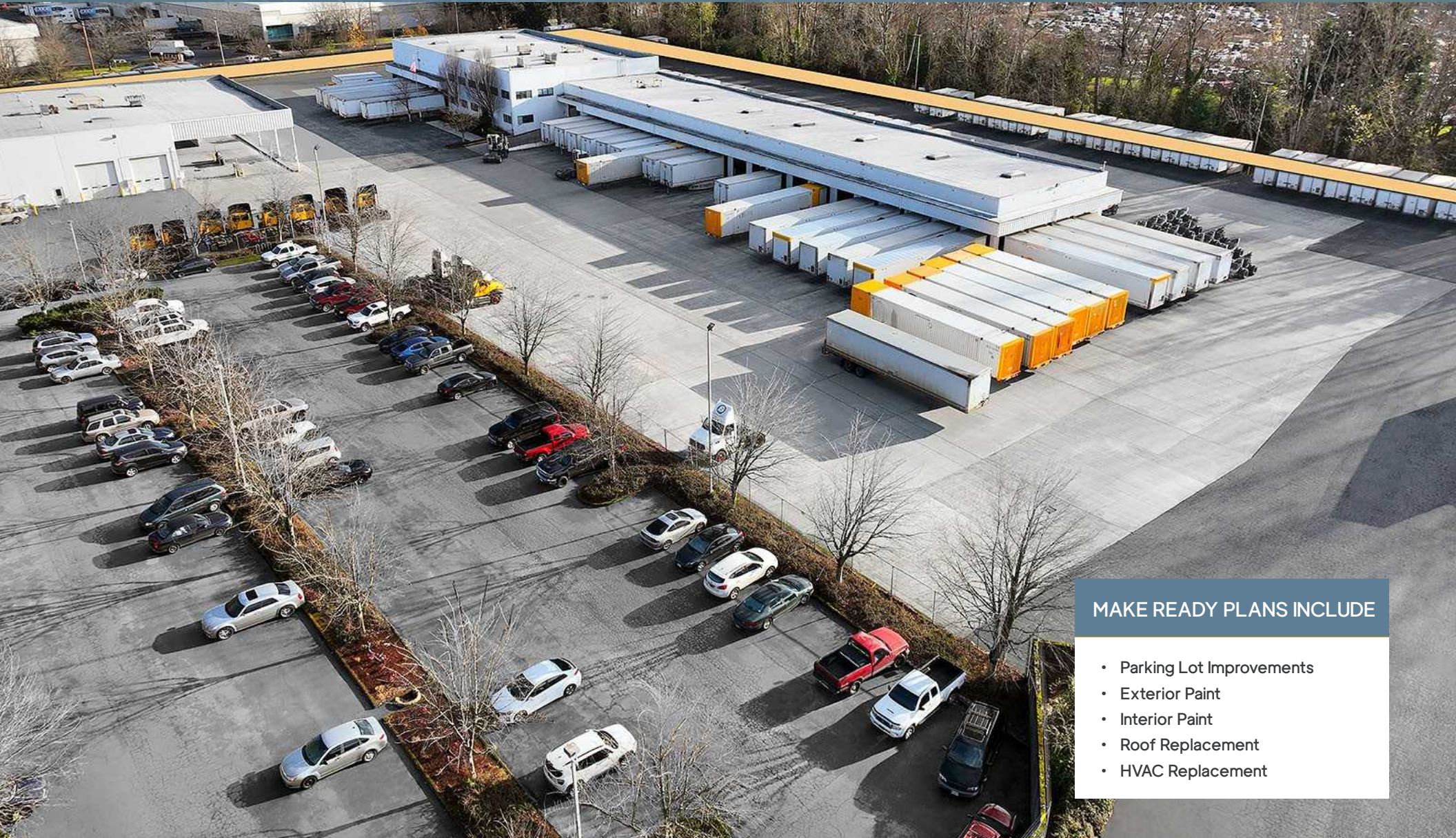
Owned & Operated By  
**LBA**Logistics



# CAPITAL REFURBISHMENT PLANNED BY LANDLORD PRIOR TO OCCUPANCY

## AVAILABLE FOR LEASE

13704 NE Airport Way, Portland, OR 97203



### MAKE READY PLANS INCLUDE

- Parking Lot Improvements
- Exterior Paint
- Interior Paint
- Roof Replacement
- HVAC Replacement

**Burr & Temkin**  
TRANSPORTATION REAL ESTATE SPECIALISTS SINCE 1983

Andrew Kemmerer  
**Broker**  
425.281.3646  
[akemmerer@burrtemkin.com](mailto:akemmerer@burrtemkin.com)

Garett Hall  
**Broker**  
360.259.8790  
[ghall@burrtemkin.com](mailto:ghall@burrtemkin.com)

Richard L. Burr  
**Broker Of Record**  
OR License#201245177

Jim Kemmerer  
**Principal**  
800.778.2303  
[kemmerer@burrtemkin.com](mailto:kemmerer@burrtemkin.com)

Owned & Operated By  
**LBA Logistics** 



**Burr & Temkin**  
TRANSPORTATION REAL ESTATE SPECIALISTS SINCE 1983

380 Front Street South  
Issaquah, WA 98027

Owned & Operated By  
**LBA**Logistics 



Andrew Kemmerer  
**Broker**  
425.281.3646  
akemmerer@burrtemkin.com



Garrett Hall  
**Broker**  
360.259.8970  
ghall@burrtemkin.com



Richard L. Burr  
**Broker of Record**  
OR License#201245177



Jim Kemmerer  
**Principal**  
800.778.2303  
kemmerer@burrtemkin.com