

*For Lease*

# EASTSIDE PLAZA BUILDING 1

1112 QUINCE ST SE, OLYMPIA, WA

Downtown Olympia



KIDDER.COM

**km** Kidder  
Mathews



# *HIGHLY- ACCESSIBLE LOCATION*

28,288 SF (divisible)

\$26.00/SF, modified gross

Tenant improvements negotiable

Generator back-up

Class A

Adjacent to I-5

*3 MIN*

INTERSTATE-5

*3 MIN*

DOWNTOWN OLYMPIA

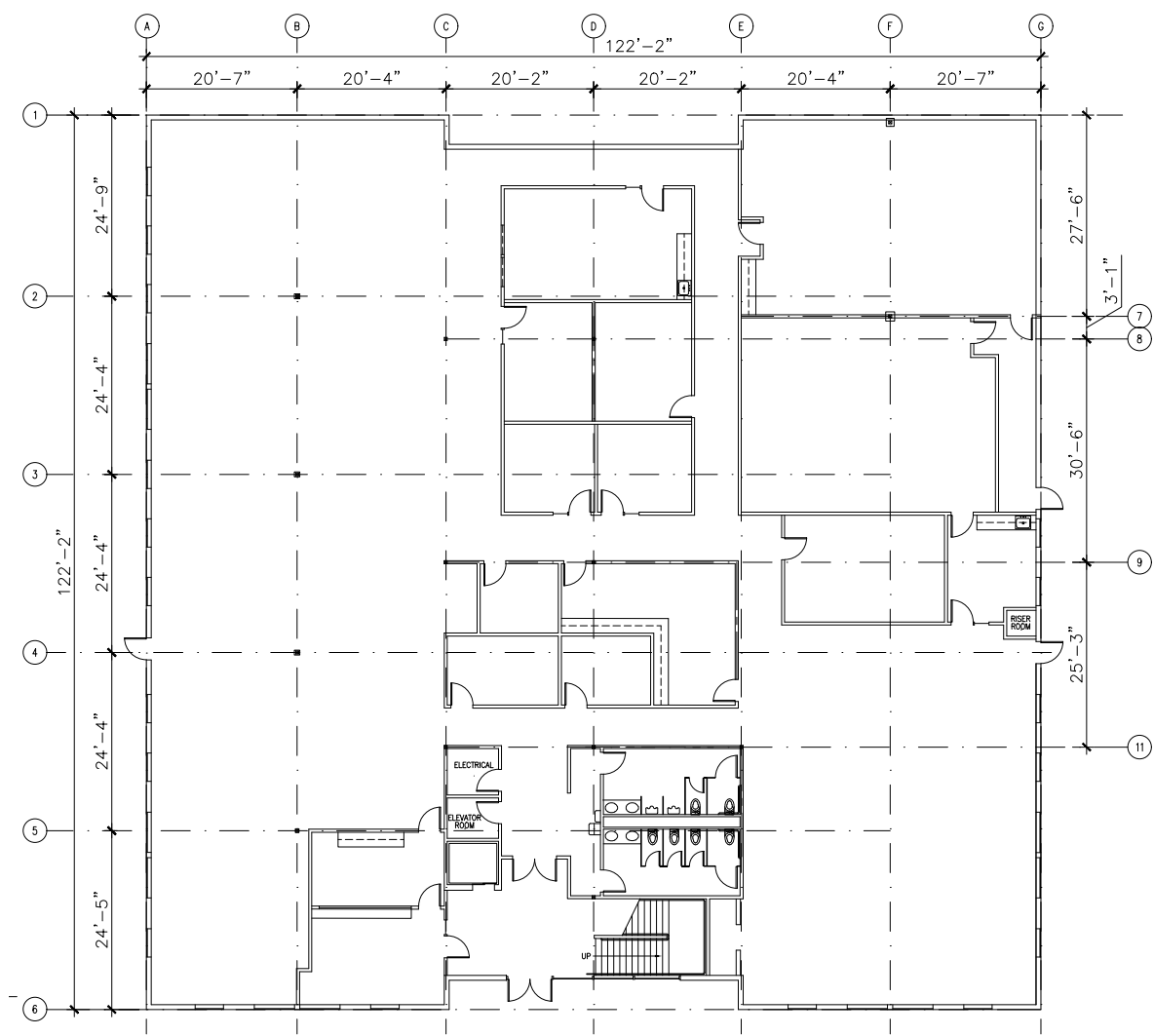




EASTSIDE PLAZA BUILDING 1



# FIRST FLOOR



14,083 SF

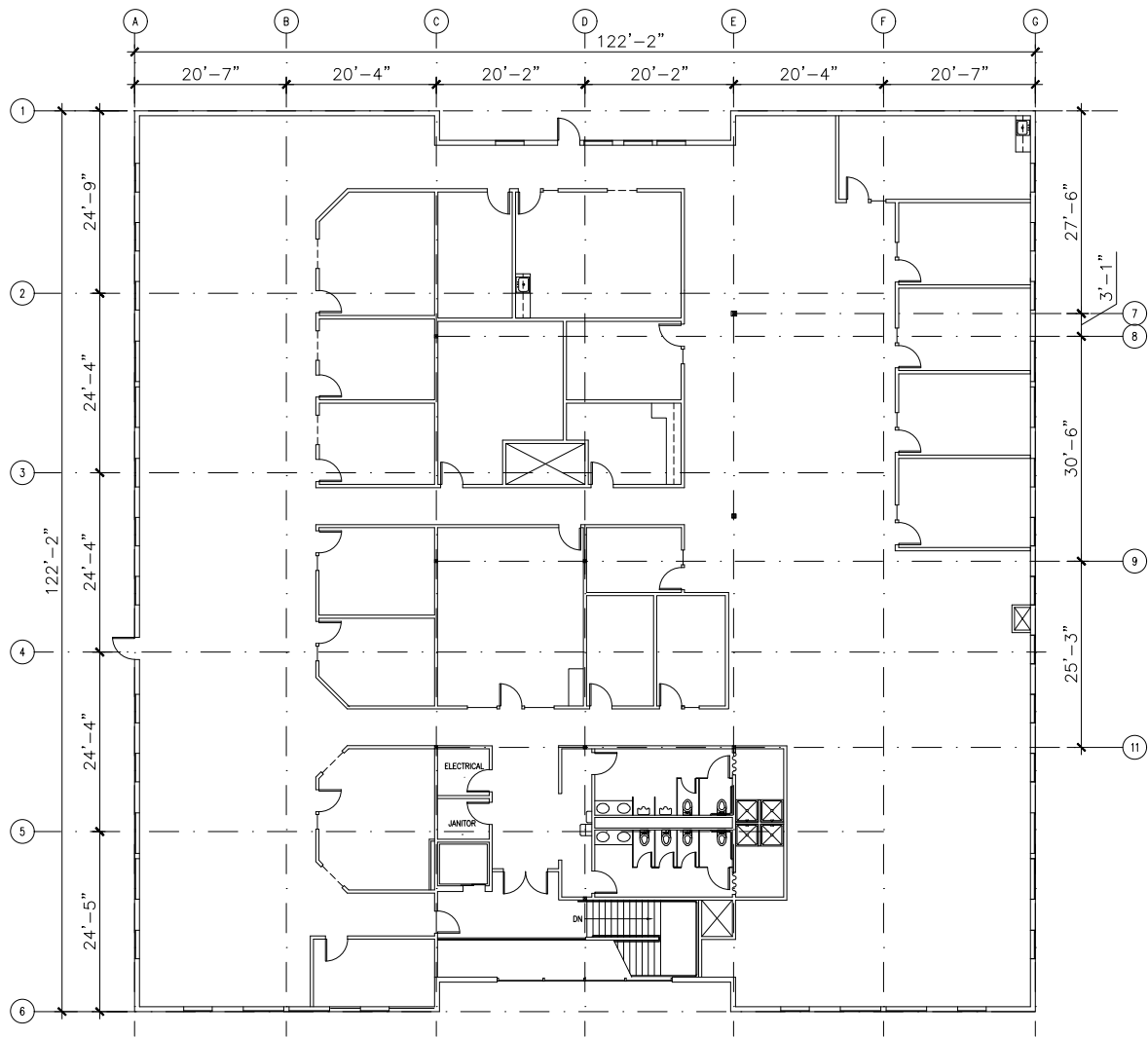
AVAILABLE

\$26.00

LEASE RATE (SF/YR)



# SECOND FLOOR



14,205 SF

AVAILABLE

\$26.00

LEASE RATE (SF/YR)

# EASTIDE PLAZA BUILDING 1

*Exclusively leased by*

AMY HARDING

360.705.1377

[amy.harding@kidder.com](mailto:amy.harding@kidder.com)

[KIDDER.COM](http://KIDDER.COM)

This information supplied herein is from sources we deem reliable. It is provided without any representation, warranty, or guarantee, expressed or implied as to its accuracy. Prospective Buyer or Tenant should conduct an independent investigation and verification of all matters deemed to be material, including, but not limited to, statements of income and expenses. Consult your attorney, accountant, or other professional advisor.

