

# CROWN PLAZA EXECUTIVE SUITES

114 W. Magnolia St., Bellingham, WA 98225



Heather Baker, Broker

(360) 927-0639 | Heather@20Lab.ca

Commercial Sales | Leasing | Management  
114 W. Magnolia St., Bellingham, WA 98225 | [www.PacificContinentalRealty.com](http://www.PacificContinentalRealty.com)



# OVERVIEW



The Crown Plaza Executive Suites is located in the heart of Downtown Bellingham close to the courthouse, city hall, theatre, restaurants and shopping! We offer both interior window and exterior window offices in various sizes. The average office size is 10 x 12 feet, which provides ample room for many office users. Your clients will be greeted by a receptionist upon arriving and can wait in the reception area or proceed to your office as you instruct. Included in your rent: Fiber internet, kitchen/breakroom, conference rooms and access to printer/copier machine. Mail and packages are delivered to your mailbox for pick up. There are 7 parking spaces for your clients to park for up to 2 hours while they visit you. Enjoy huge windows with beautiful city/bay or mountain views. The building is ADA-accessible and is air conditioned with modern HVAC. You will have 24/7 access, with after hours key fob access. Offices start at \$550.00 month for internal offices and \$800.00 month for external window offices. An optional add-on phone service is also available. You will receive a phone number and phone. Calls are answered by the receptionist in your business name and routed as you direct.



### Building History

This building was initially known as the Montague & McHugh building, built on the corner of Magnolia and Commercial streets. Famous for its Neoclassical Commercial design, the five story structure was created with reinforced concrete covered in terra cotta. The terra cotta itself is glazed in a faux marble gray-pink that gives the building its distinctive look.

The building is almost square, 125 feet by 110 feet. Graham created a symmetrical appearance by adjusting the spacing of the features to keep things in proportion. There are rounded pediment arches, an ornamental frieze, spiral columns with finials, and rising fluted pilasters. The ornamentation of the outside of the building, particularly the first and second floors, is an astonishing amount of detail work. Within each pediment is a cartouche flanked by floral panels. Graham used friezes, vertical piers, and urn finials, as well as a projecting cornice with overhanging dentils in his work. The parapet has a floral cresting rising over a foot above it.

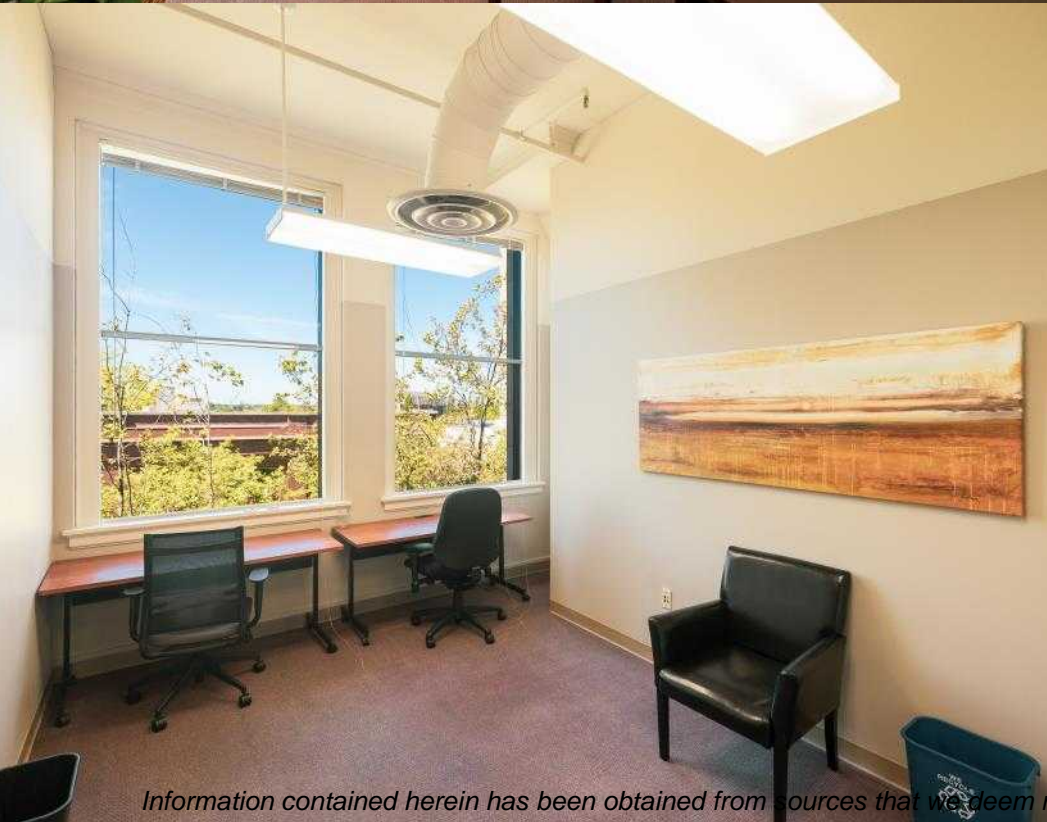
The third and fourth floors are less ornamental, but the windows and vertical elements continue in the same pattern for continuity. There are still architectural elements such as fluted pilasters, spandrels, and medallions. The ornate features of the building helped it stand out as downtown grew around it.

### Details

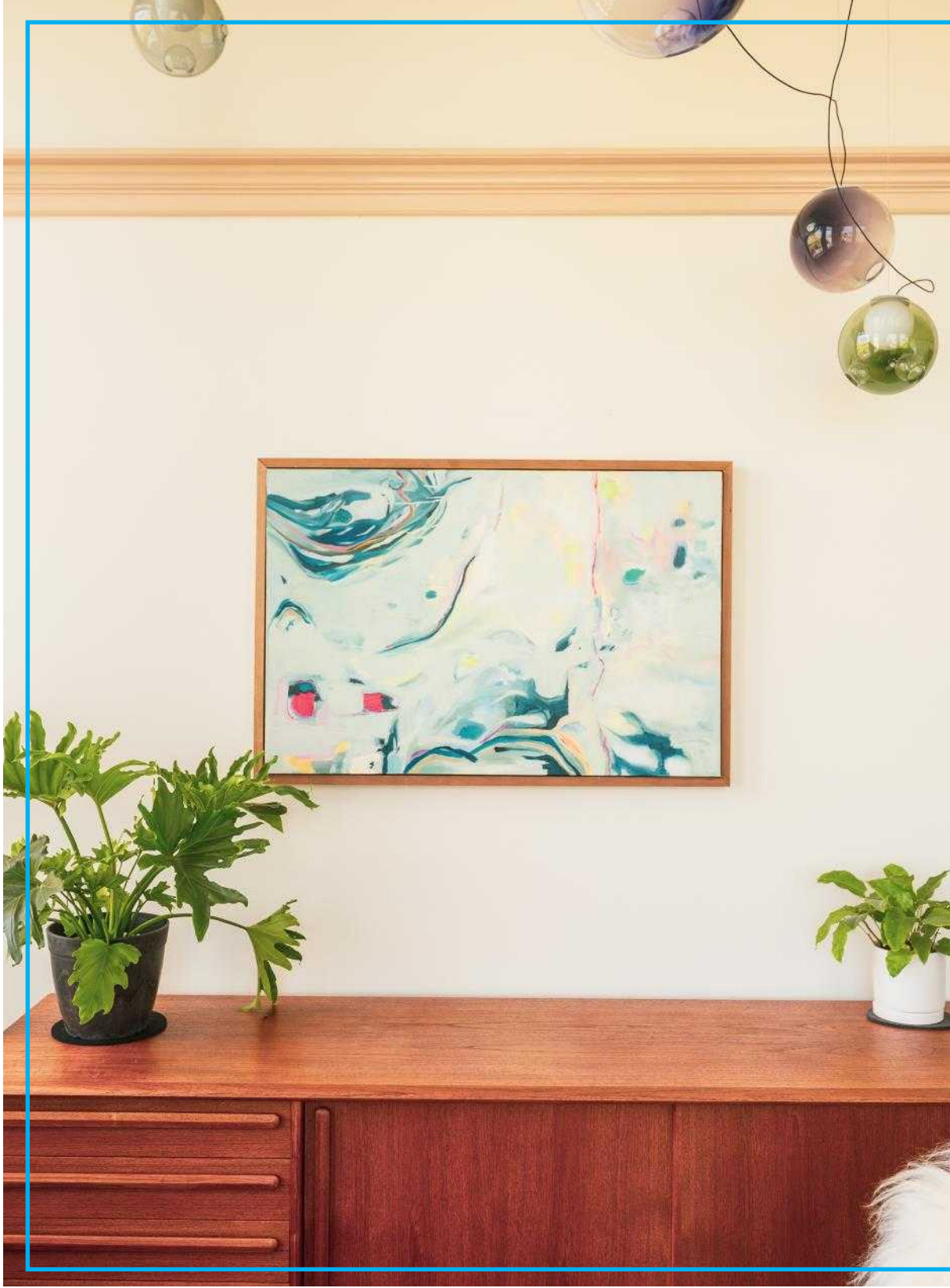
- Scenic views of the Bellingham waterfront, Mt. Baker, and beautiful downtown Bellingham
- Outstanding natural light
- Property management company on-site
- UPS & FedEx drop boxes in lobby
- Client parking available
- Ample foot traffic and easy access for customers
- Central Bellingham location that provides easy access to Interstate-5 and all areas
- Current tenants include government offices, attorneys, NGOs, NPOs, financial services, IT professionals, website design & graphics, marketing professionals, café, and salon



# OFFICE EXAMPLES







# THE EXECUTIVE FLOOR

- SINGLE ROOM OFFICES AT 150 SF AND UP
- MONTHLY RENTS STARTING AT \$550/ PER MONTH
- DOWNTOWN PARKING AVAILABLE - VISITOR PARKING FOR CLIENTS
- CONFERENCE ROOM ACCESS
- RECEPTION SERVICES
- XEROX PRINTING, COPYING, AND SCANNING
- FIBER INTERNET AND PHONE INCLUDED
- 24-HOUR ACCESS TO THE BUILDING
- FULL KITCHEN/BREAK ROOM

# VIRTUAL TENANTS

Some tenants may need the components of an office (mailing address, phone number) but travel too much to make a physical location make sense. Our virtual tenants have access to three plans that provide differing levels of support.

## Level 1 - Mail Service

- Mailing Address in Downtown Bellingham
- Additional Support Available

## Level 2 - Phone, Mail, Conference Room

- Mailing Address in Downtown Bellingham
- Phone Number and Voicemail Box
- Additional Support Available

## Level 3 - Phone w/ Live Reception, Mail, Conference Room

- Level 2 Support Options and;
- Personalized Telephone Answering
- Incoming Voicemail Notifications
- 6 Hours of Conference Room Use Per Month
- Additional Reception Support

## Additional Services For Virtual Tenants Include:

- Mail Forwarding: Cost + 25% Packages will be held for up to 7 days, after that there will be a storage charge of \$1.00 per day
- Mail Scanning & Emailing: \$20 - Up to 10 Pieces a Month Additional Quantities Available
- Notary Services: \$5.00 Per Document, \$1.00 for Additional Stamps on Same Document
- Conference Rooms: \$40.00-60.00 Per Hour & \$175.00 Per Day
- Printer Copying: B&W at \$.20 Per Page, Color at \$.60 Per Page



# MARKET AREA

The Pacific Northwest scarcely gets more peaceful than unspoiled Bellingham, a bustling city nestled in the Bellingham Bay. Nature abounds in all directions surrounding this coastal paradise. Bellingham can be conveniently accessed by land, air, rail, and sea. With easy transportation to both Canada and the international hub of Seattle, Bellingham offers a great middle point. While the Canadian market offers a diverse economy for the local businesses, continually businesses are migrating north to the area in order to find a new and better home. The waters of the Pacific offer opportunities for whale watching, cruising to Friday Harbor or visiting the Canadian city of Victoria. To the east, Mt. Baker beckons skiers and snowboarders to its slopes. The city itself is alive with vibrant theater, historical museums, gourmet restaurants and fine arts.



## NATURAL BEAUTY

The dominating Mt. Baker towers over the city, with its staggering beauty. The deep expansive blue of the ocean carries our sight to the San Juan Islands. All the while you are hugged by the soft green of thunderous trees that decorate land for as far as the eye can see.



## STRATEGIC LOCATION

The prosperous city Vancouver, Canada only sits 55 miles north. And the technological hub of Seattle resides 88 miles to the south. Bellingham provides an essential middle point for those looking to operate within both expanding districts.



## HIGHER EDUCATION

Within Whatcom there are five different institutions of higher education that cover a vast array of different focuses. Western Washington University, Whatcom Community College, Bellingham Technical College, NW Indian College, and Trinity University all provide qualified and skilled workers.

## DEMOGRAPHICS



### Population

230,077



### Average HH Income

\$80,569



### Median Age

39

Whatcom County:

Bellingham:

93,910

\$80,709

37.5