



## Asking Price:

\$1.20

PSF NNN

## CONTACT US

**Tami Walker**

208 420 4601  
tami.walker@colliers.com

**Jerrika Gonzalez**

208 344 6516  
jerrika.gonzalez@colliers.com

205 Shoshone Street N, Suite 201  
Twin Falls, Idaho 83301  
208 910 2006  
colliers.com/idaho

## FOR LEASE

**Take 4,000 SF or 8,000 SF**

# 414 Shoup Ave. W. #B

Twin Falls, Idaho

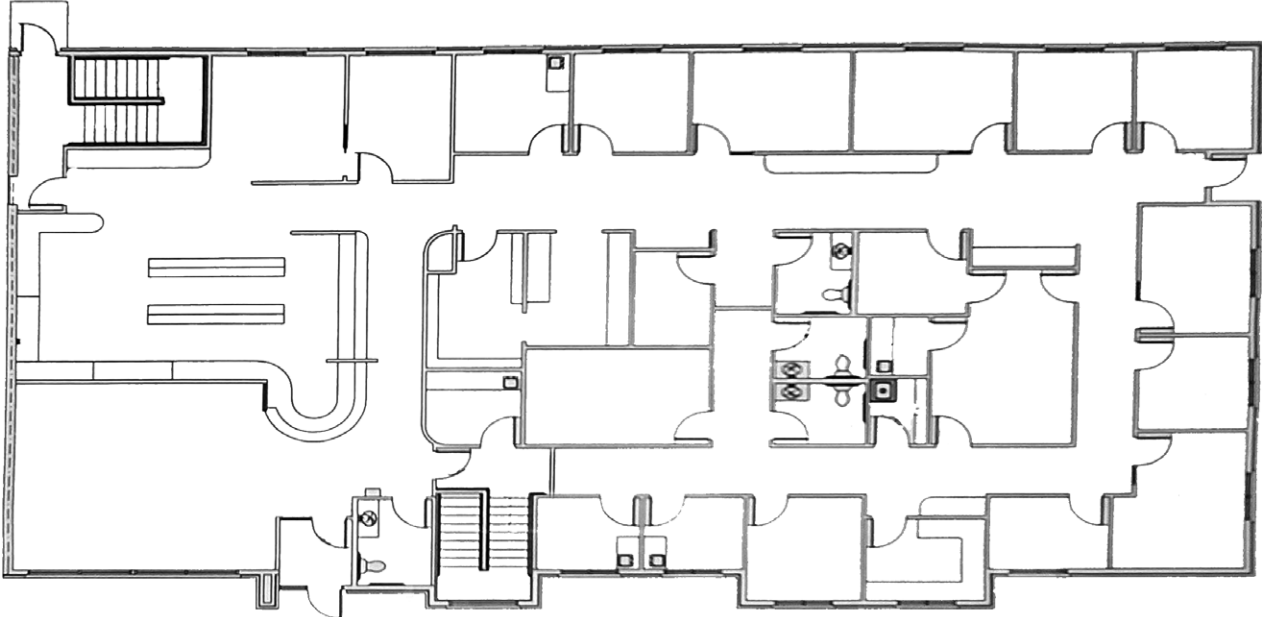
**Highlights**

- Within minutes of the hospital
- Easy access for patients or clients
- Ample Parking
- Some suites with water, larger suites could be used for conference or meeting rooms
- Located in professional office area
- Lead lined x-ray room

**Property Information**

<b>Property Type</b>	Commercial
<b>Building Size</b>	8,160 SF   Can be demised to ±4,000 SF
<b>Parking</b>	Paved Parking Lot

# Floor Plan



# Property Photos



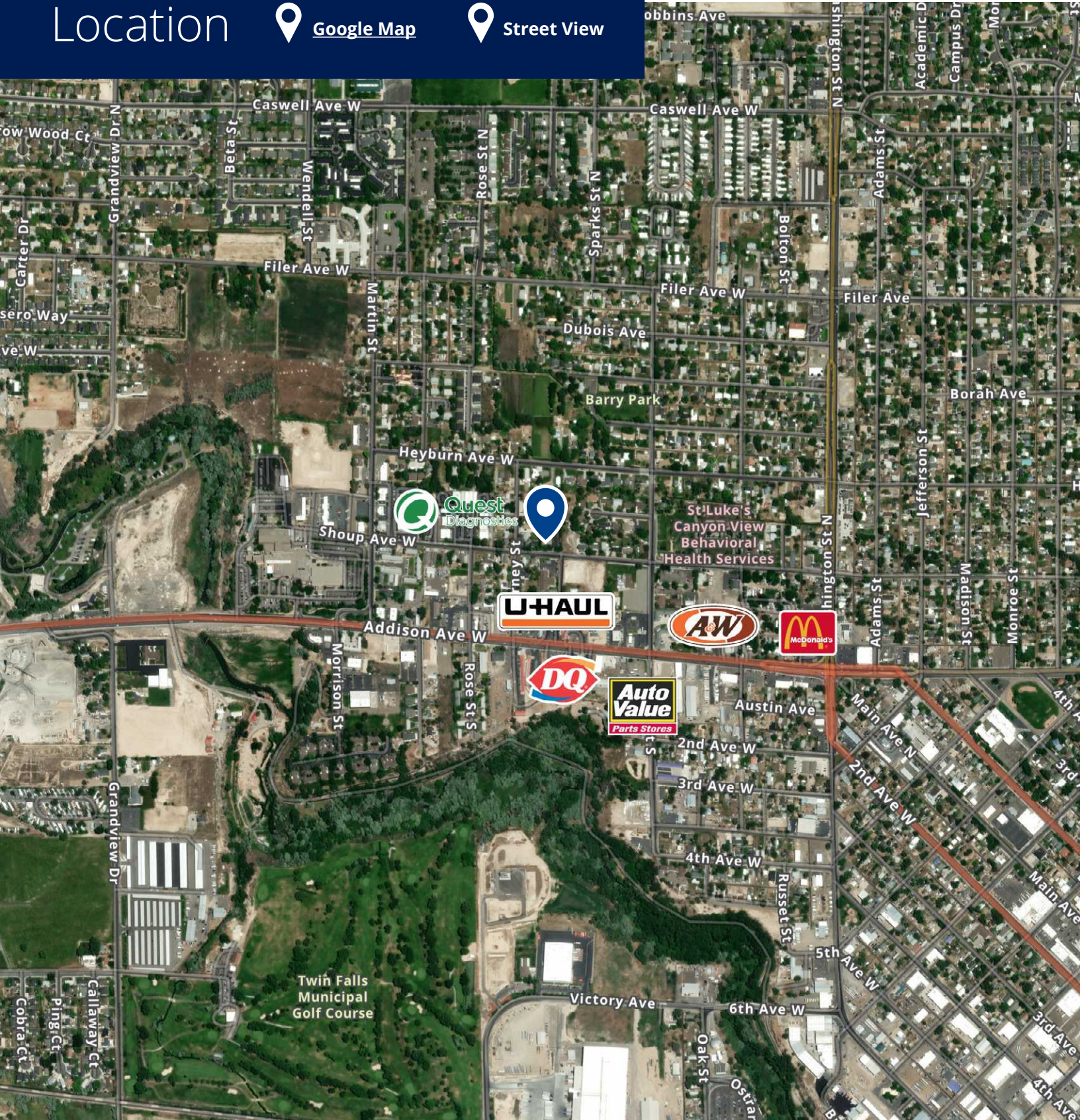
# Location



[Google Map](#)



[Street View](#)



205 Shoshone Street N, Suite 201  
Twin Falls, Idaho 83301  
208 910 2006  
[colliers.com/idaho](http://colliers.com/idaho)

This document has been prepared by Colliers for advertising and general information only. Colliers makes no guarantees, representations or warranties of any kind, expressed or implied, regarding the information including, but not limited to, warranties of content, accuracy and reliability. Any interested party should undertake their own inquiries as to the accuracy of the information. Colliers excludes unequivocally all inferred or implied terms, conditions and warranties arising out of this document and excludes all liability for loss and damages arising therefrom. This publication is the copyrighted property of Colliers and/or its licensor(s). © 2025. All rights reserved. This communication is not intended to cause or induce breach of an existing listing agreement. Colliers Magic Valley, LLC.