

RETAIL FOR LEASE
VELO AND RAY APARTMENTS
3624 Stone Way N, Seattle, WA 98103



For more information please contact:

LAURA MILLER
laura@gibraltarusa.com
206.351.3573

TRACY CORNELL
tracyc@gibraltarusa.com
206.948.0630



3624 STONE WAY N, SEATTLE, WA 98103

RETAIL FOR LEASE



HIGHLIGHTS

- Modern retail spaces available along Fremont's vibrant Stone Way corridor
- Located at the base of Velo and Ray Apartments, a 137-unit apartment community
- Modern space features two (2) operable roll-up storefront doors, private patios, abundant natural light, high ceilings, and polished concrete floors
- Ideal for fitness, medical/dental, physical therapy or childcare
- 2 parking stalls available in Building Garage at a monthly rate of \$200/stall
- Join a thriving neighborhood of businesses including Tavolata, Old Salt Fish & Bagel, Sea Wolf Bakers, EVO, Brooks Shoes, Fiasco, Joule, and The Whale Wins



57

TRANSIT SCORE



91

WALK SCORE



94

BIKE SCORE



146,188

TOTAL POPULATION



70,780

TOTAL HOUSEHOLDS



\$115,256

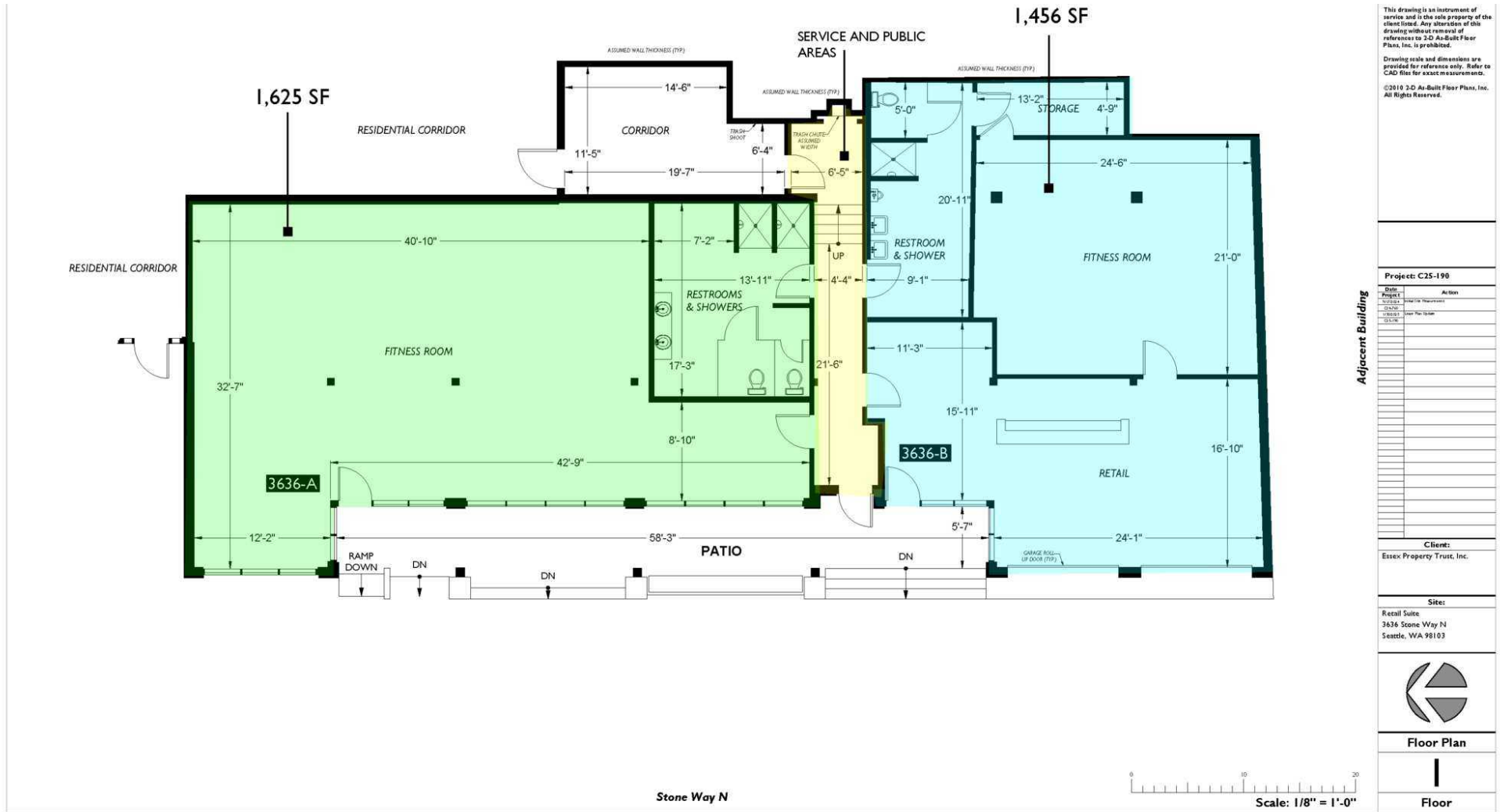
MEDIAN INCOME

* Estimated 2024 Demographics based on a 2 mile radius

Suite 3636-B

This information has been obtained from sources believed reliable. No guarantee, warranty or representation, express or implied, is made as to the accuracy of the information contained herein, and same is submitted subject to errors, omissions, change of price, rental or other conditions withdrawal without notice, and to any special listing conditions, imposed by our principals. Any projections, opinions, assumptions or estimates used are for example only and do not represent the current or future performance of the property.

RETAIL FOR LEASE



AVAILABLE SPACES

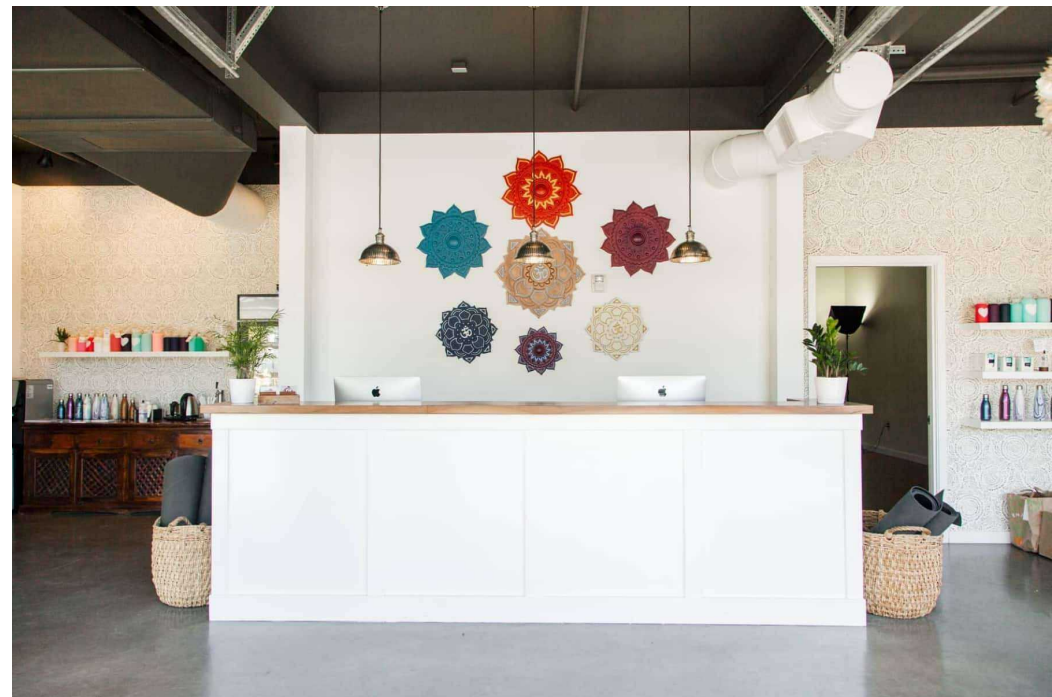
SUITE	TENANT	SIZE (SF)	EST. 202	LEASE RATE
Suite 3636-A	Available	1,625 SF	\$12.00	\$32.64 SF/yr
Suite 3636-B	Available	1,456 SF	\$12.00	\$32.64 SF/yr

3624 STONE WAY N, SEATTLE, WA 98103

RETAIL FOR LEASE



Suite 3636-A



Suite 3636-B

3624 STONE WAY N, SEATTLE, WA 98103

RETAIL FOR LEASE

