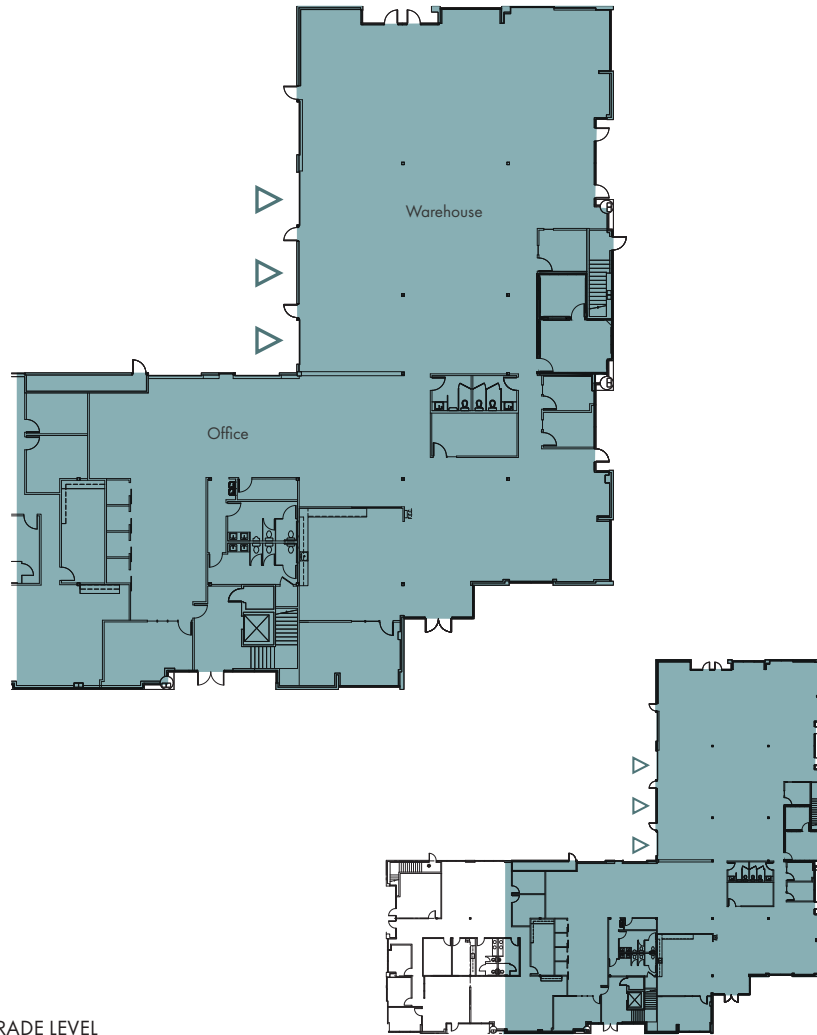


WESTPARK

BUSINESS PARK

8461 154TH AVENUE NE
REDMOND, WA

Building G // Suite 110/120



7,130 SF

AVAILABLE OFFICE

6,146 SF

AVAILABLE WAREHOUSE

13,276 SF

TOTAL AVAILABLE

△ GRADE LEVEL

FOR LEASING INFORMATION CONTACT

MARK FLIPPO

JLL

425.974.4007

mark.flippo@am.jll.com

JASON BLOOM

Kidder Mathews

425.450.1102

jason.bloom@kidder.com



PACIFIC OAK

WESTPARKREDMOND.COM

This information supplied herein is from sources we deem reliable. It is provided without any representation, warranty or guarantee, expressed or implied as to its accuracy. Prospective Buyer or Tenant should conduct an independent investigation and verification of all matters deemed to be material, including, but not limited to, statements of income and expenses. Consult your attorney, accountant, or other professional advisor.

