

FOR LEASE

# 316TH PROFESSIONAL PLAZA

1825 S 316TH ST, FEDERAL WAY, WA



KIDDER.COM

**km** Kidder  
Mathews



## *Modern Professional Office*

Entire second floor available

Access via elevator and staircase

8,265 SF

\$17.00 PSF, NNN

60 parking stalls for building

Located in the heart of Federal Way,  
near The Commons, Target and Trader Joe's

Potential monument signage

Option to keep all existing furniture, including  
cubicles, desks, and chairs

**1 MIN**  
DRIVE TO HWY 99

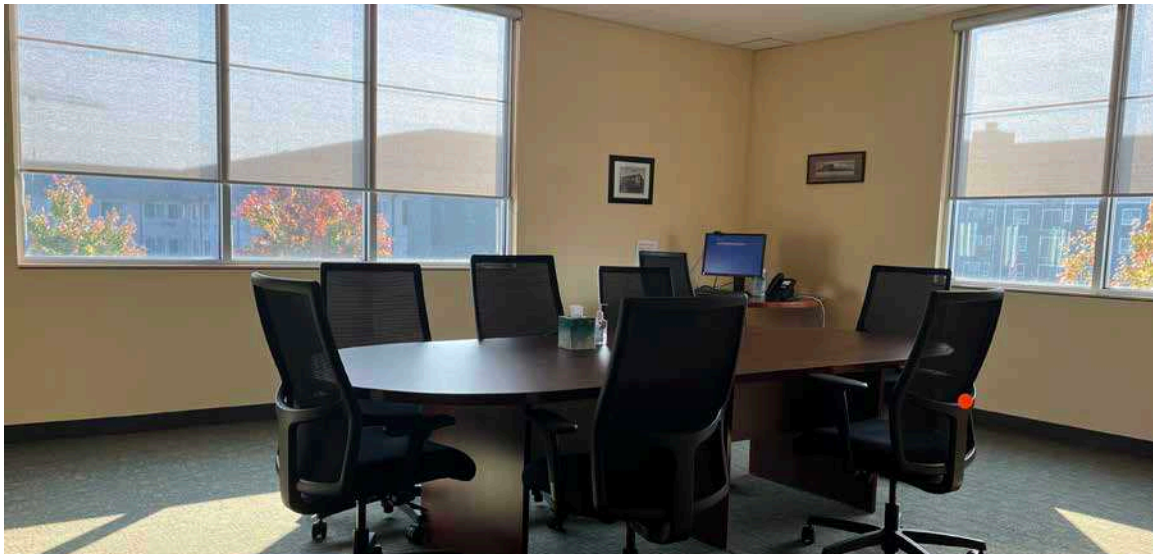
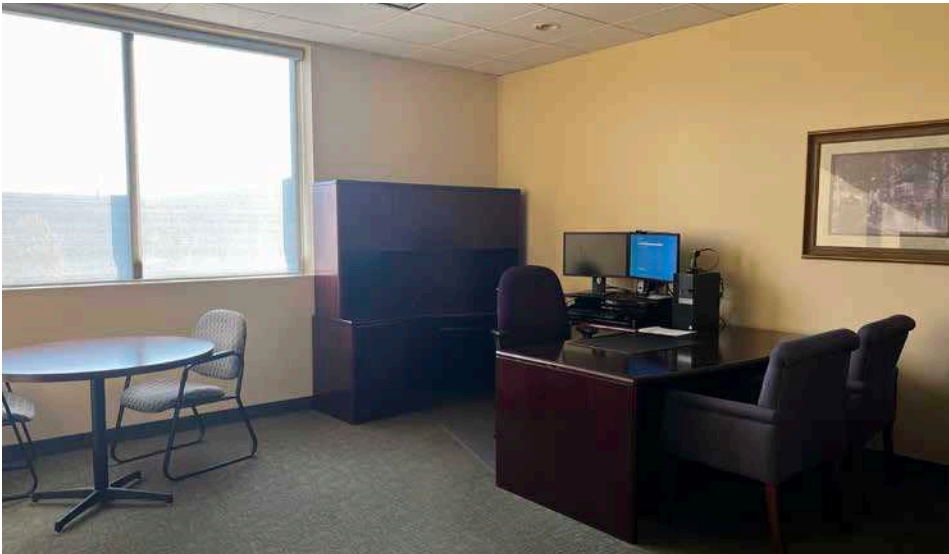
**4 MIN**  
DRIVE TO I-5





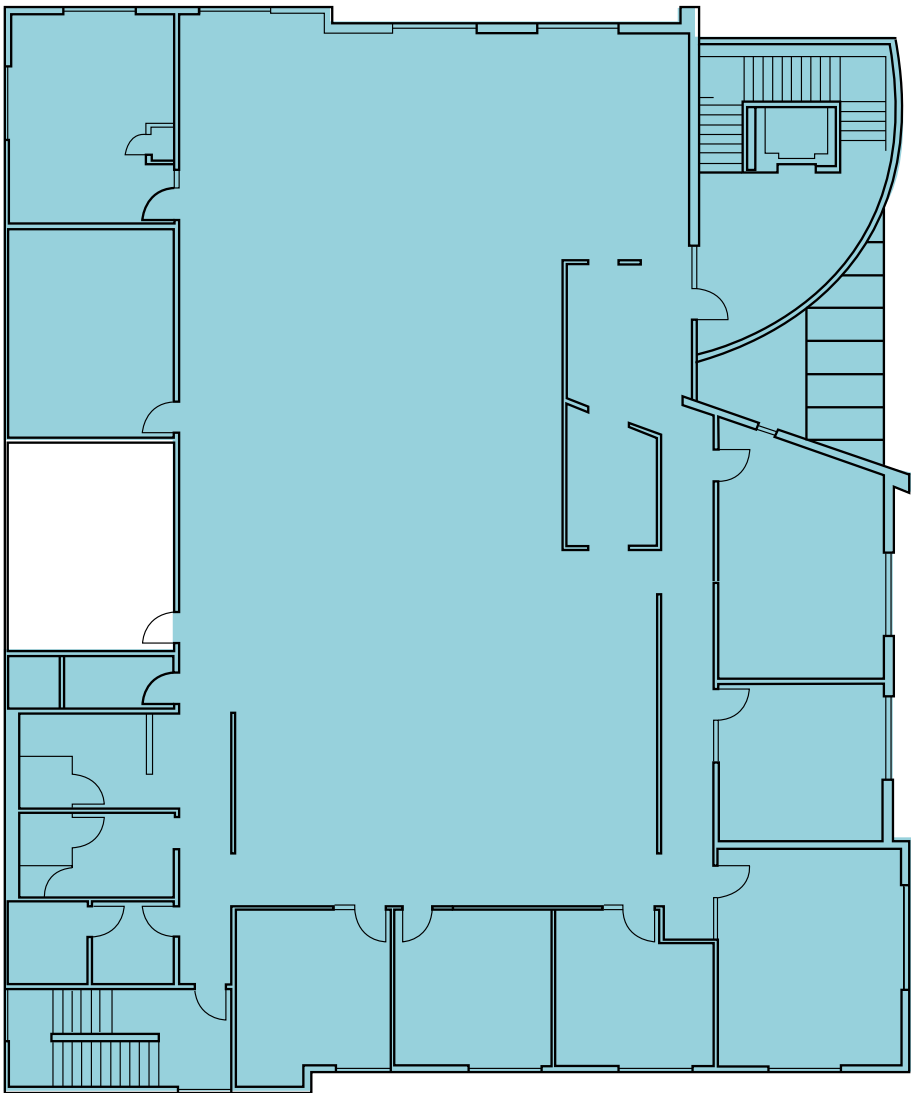






\*Options to keep all existing furniture, including cubicles, desks, and chairs

SUITE 200



8,265 SF

AVAILABLE

60

SHARED PARKING STALLS

4

LARGE CONFERENCE ROOMS,  
LUNCH ROOM, STORAGE ROOM,  
PRIVATE RESTROOM



*Exclusively listed by*

**JOEL SHABEL**

Vice President

253.722.1406

[joel.shabel@kidder.com](mailto:joel.shabel@kidder.com)

**WILL FRAME**

Executive Vice President

253.722.1412

[will.frame@kidder.com](mailto:will.frame@kidder.com)

**DREW FRAME**

Senior Vice President

253.722.1433

[drew.frame@kidder.com](mailto:drew.frame@kidder.com)

**KIDDER.COM**