

BELLEVUE TECH CENTER

NE 24th St & 156th Ave NE

ACTIVE AVAILABILITIES

| BUILDING | SUITE(S) | RSF | ADDRESS |
|----------|----------|------------|-------------------|
| 2002 | 100 | 10,057 RSF | 2002 158th Ct NE |
| 2010 | 110 | 2,047 RSF | 2010 156th Ave NE |
| 2010 | 220 | 1,680 RSF | 2010 156th Ave NE |
| 2010 | 301 | 8,865 RSF | 2010 156th Ave NE |
| 2035 | 200 | 16,502 RSF | 2305 158th Ct NE |



For leasing information:

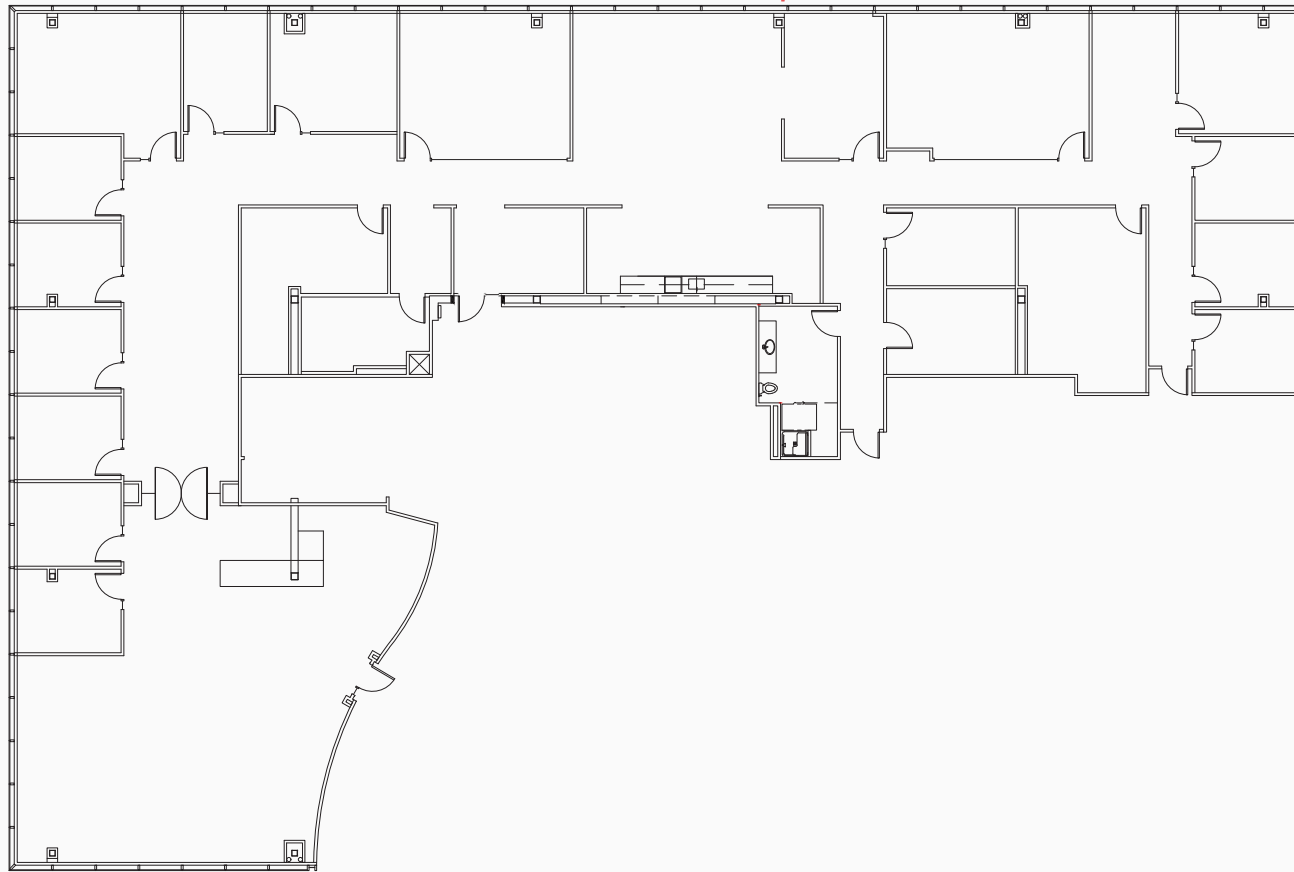
MARK FLIPPO | 425.974.4007 | mark.flippo@jll.com
JASON BLOOM | 425.450.1102 | jason.bloom@kidder.com

© 2024 • Jones Lang LaSalle Brokerage Inc. Lic #01856260 | Although information has been obtained from sources deemed reliable, neither Owner nor JLL makes any guarantees, warranties or representations, express or implied, as to the completeness or accuracy as to the information contained herein. Any projections, opinions, assumptions or estimates used are for example only. There may be differences between projected and actual results, and those differences may be material. The Property may be withdrawn without notice. Neither Owner nor JLL accepts any liability for any loss or damage suffered by any party resulting from reliance on this information. If the recipient of this information has signed a confidentiality agreement regarding this matter, this information is subject to the terms of that agreement.

BELLEVUE TECH CENTER

SUITE 100
10,057 RSF

BLDG
2002



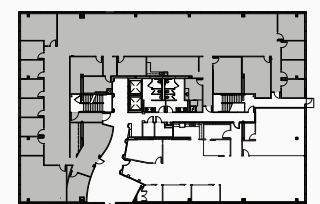
2002 158TH CT NE
BELLEVUE, WA 98008

DRAWING NOT TO SCALE

For leasing information:

MARK FLIPPO | 425.974.4007 | mark.flippo@jll.com
JASON BLOOM | 425.450.1102 | jason.bloom@kidder.com

KEY PLAN



© 2024 • Jones Lang LaSalle Brokerage Inc. Lic #01856260 | Although information has been obtained from sources deemed reliable, neither Owner nor JLL makes any guarantees, warranties or representations, express or implied, as to the completeness or accuracy as to the information contained herein. Any projections, opinions, assumptions or estimates used are for example only. There may be differences between projected and actual results, and those differences may be material. The Property may be withdrawn without notice. Neither Owner nor JLL accepts any liability for any loss or damage suffered by any party resulting from reliance on this information. If the recipient of this information has signed a confidentiality agreement regarding this matter, this information is subject to the terms of that agreement.



BELLEVUE TECH CENTER

SUITE 110
2,047 RSF

BLDG
2010



2010 156TH AVE NE
BELLEVUE, WA 98008

DRAWING NOT TO SCALE



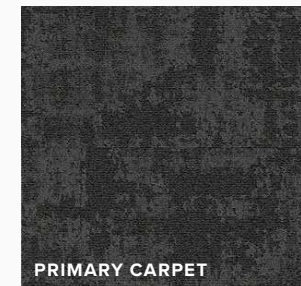
For leasing information:

MARK FLIPPO | 425.974.4007 | mark.flippo@jll.com
JASON BLOOM | 425.450.1102 | jason.bloom@kidder.com

Dedicated Reception
2 Private Offices
Flexible Open Office

6-Person
Meeting Space
Open Break on
Window Line

FINISH OVERVIEW

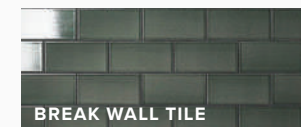


PRIMARY PAINT

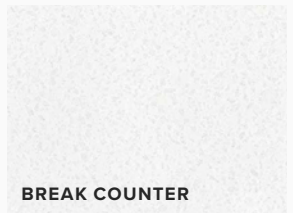
ACCENT PAINT



LUXURY VINYL TILE



BREAK WALL TILE



BREAK COUNTER



BREAK MILLWORK

FURNITURE SHOWN IS REPRESENTATIONAL ONLY

© 2024 • Jones Lang LaSalle Brokerage Inc. Lic #01856260 | Although information has been obtained from sources deemed reliable, neither Owner nor JLL makes any guarantees, warranties or representations, express or implied, as to the completeness or accuracy as to the information contained herein. Any projections, opinions, assumptions or estimates used are for example only. There may be differences between projected and actual results, and those differences may be material. The Property may be withdrawn without notice. Neither Owner nor JLL accepts any liability for any loss or damage suffered by any party resulting from reliance on this information. If the recipient of this information has signed a confidentiality agreement regarding this matter, this information is subject to the terms of that agreement.

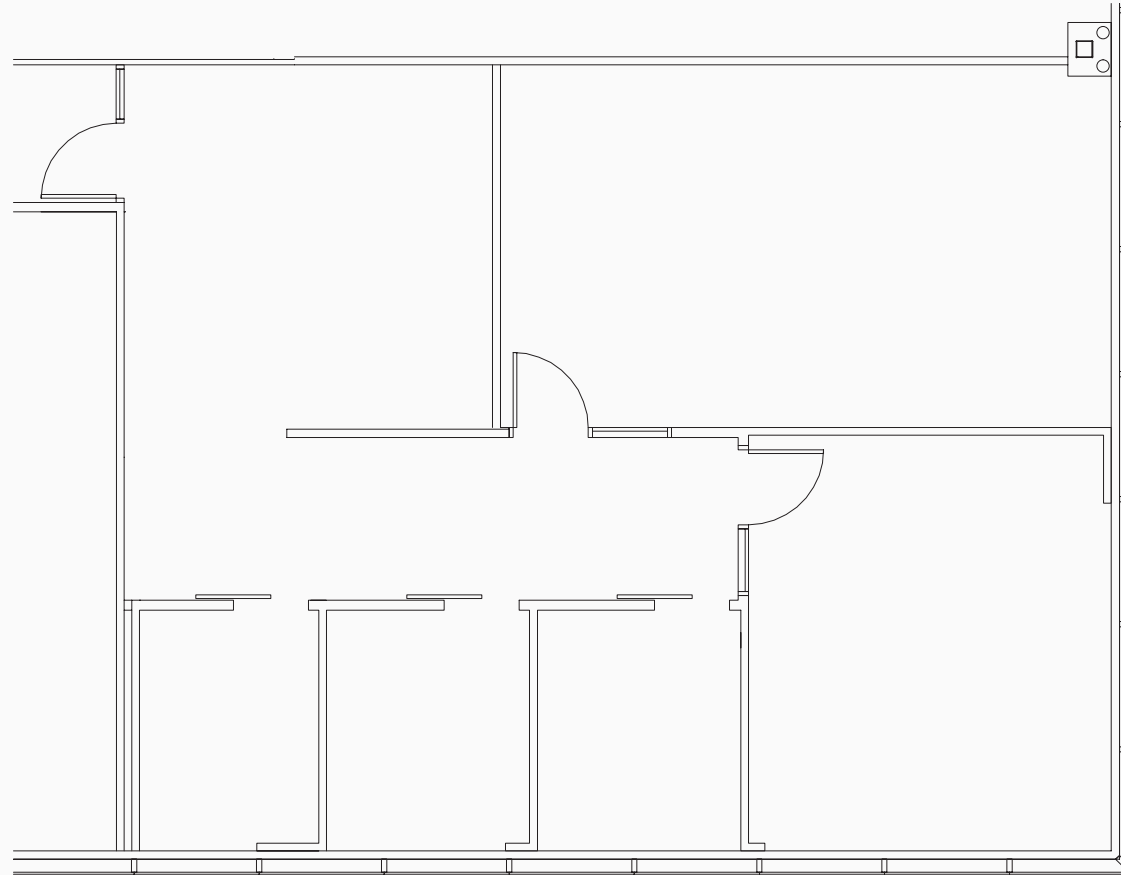


BELLEVUE TECH CENTER

SUITE 220

1,680 RSF

BLDG
2010



2010 156TH AVE NE
BELLEVUE, WA 98008

DRAWING NOT TO SCALE

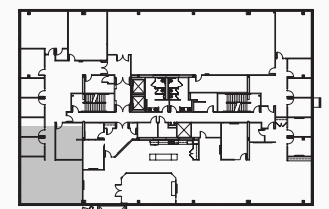


For leasing information:

MARK FLIPPO | 425.974.4007 | mark.flippo@jll.com

JASON BLOOM | 425.450.1102 | jason.bloom@kidder.com

KEY PLAN



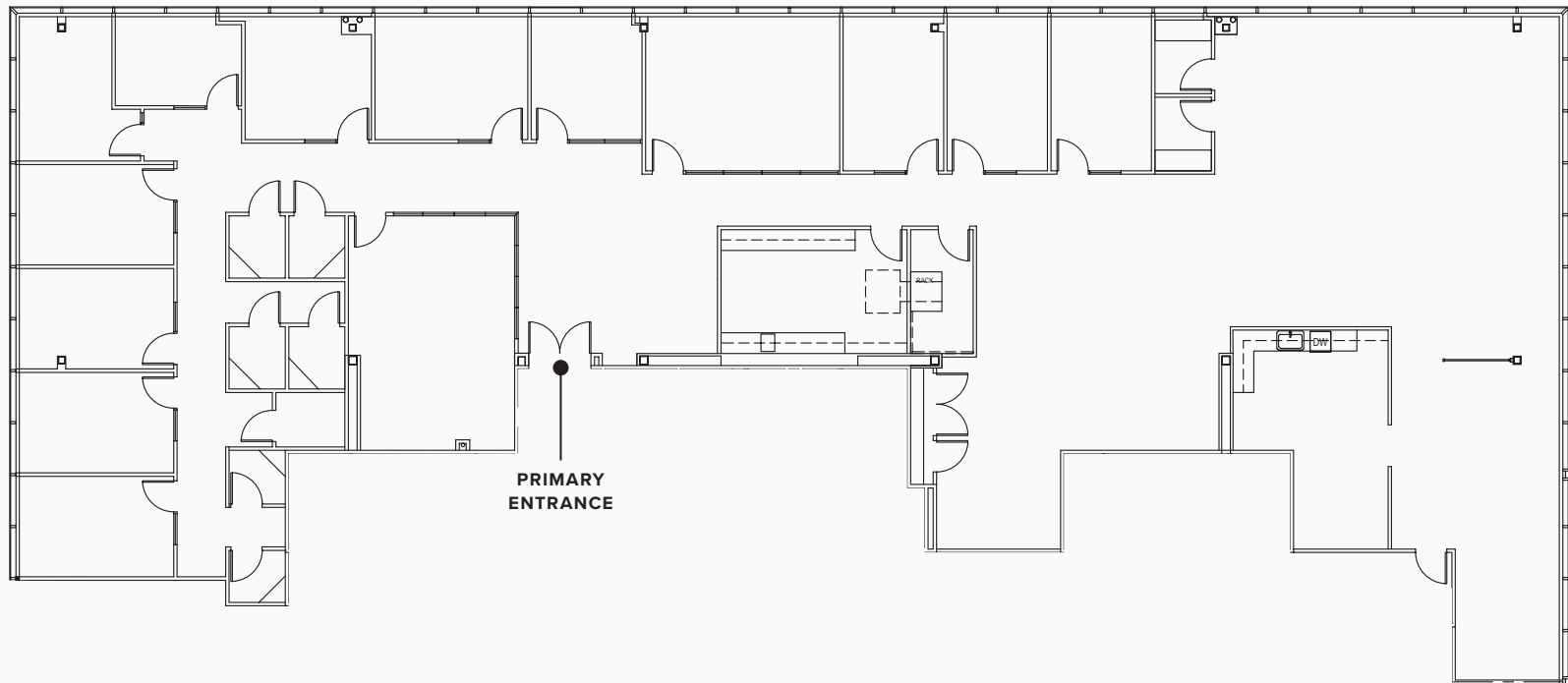
© 2024 • Jones Lang LaSalle Brokerage Inc. Lic #01856260 | Although information has been obtained from sources deemed reliable, neither Owner nor JLL makes any guarantees, warranties or representations, express or implied, as to the completeness or accuracy as to the information contained herein. Any projections, opinions, assumptions or estimates used are for example only. There may be differences between projected and actual results, and those differences may be material. The Property may be withdrawn without notice. Neither Owner nor JLL accepts any liability for any loss or damage suffered by any party resulting from reliance on this information. If the recipient of this information has signed a confidentiality agreement regarding this matter, this information is subject to the terms of that agreement.



BELLEVUE TECH CENTER

SUITE 301
8,865 RSF

BLDG
2010



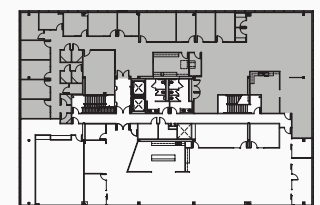
2010 156TH AVE NE
BELLEVUE, WA 98008

DRAWING NOT TO SCALE

For leasing information:

MARK FLIPPO | 425.974.4007 | mark.flippo@jll.com
JASON BLOOM | 425.450.1102 | jason.bloom@kidder.com

KEY PLAN



© 2024 • Jones Lang LaSalle Brokerage Inc. Lic #01856260 | Although information has been obtained from sources deemed reliable, neither Owner nor JLL makes any guarantees, warranties or representations, express or implied, as to the completeness or accuracy as to the information contained herein. Any projections, opinions, assumptions or estimates used are for example only. There may be differences between projected and actual results, and those differences may be material. The Property may be withdrawn without notice. Neither Owner nor JLL accepts any liability for any loss or damage suffered by any party resulting from reliance on this information. If the recipient of this information has signed a confidentiality agreement regarding this matter, this information is subject to the terms of that agreement.

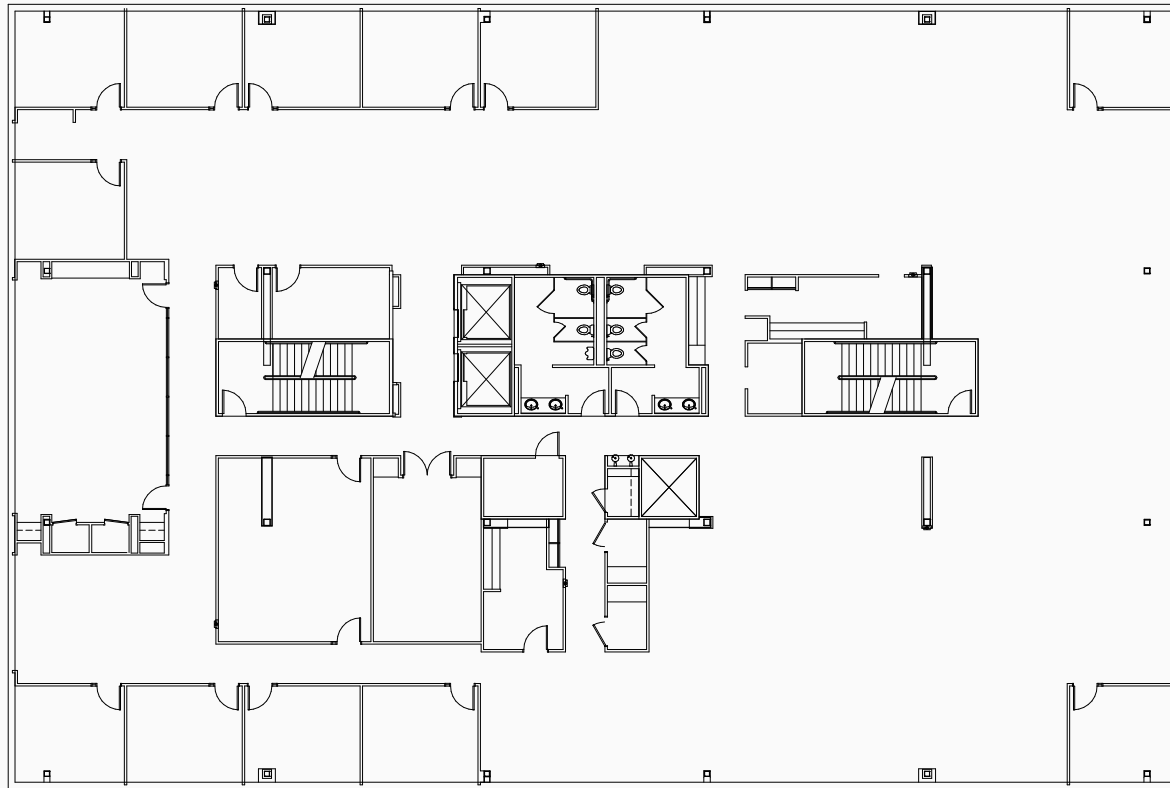


BELLEVUE TECH CENTER

SUITE 200

16,502 RSF

BLDG
2035



2305 158TH CT NE
BELLEVUE, WA 98008

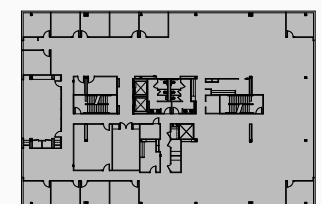
DRAWING NOT TO SCALE

For leasing information:

MARK FLIPPO | 425.974.4007 | mark.flippo@jll.com

JASON BLOOM | 425.450.1102 | jason.bloom@kidder.com

KEY PLAN



© 2024 • Jones Lang LaSalle Brokerage Inc. Lic #01856260 | Although information has been obtained from sources deemed reliable, neither Owner nor JLL makes any guarantees, warranties or representations, express or implied, as to the completeness or accuracy as to the information contained herein. Any projections, opinions, assumptions or estimates used are for example only. There may be differences between projected and actual results, and those differences may be material. The Property may be withdrawn without notice. Neither Owner nor JLL accepts any liability for any loss or damage suffered by any party resulting from reliance on this information. If the recipient of this information has signed a confidentiality agreement regarding this matter, this information is subject to the terms of that agreement.

