

Creative Office/ Retail Available

Madrona Village

3300 E Union, Seattle WA

9,540 SF Office/ Retail for Lease



Madrona Village

Office/ Retail For Lease

Property Features

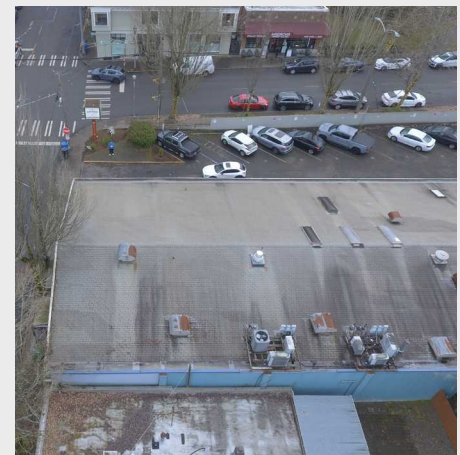
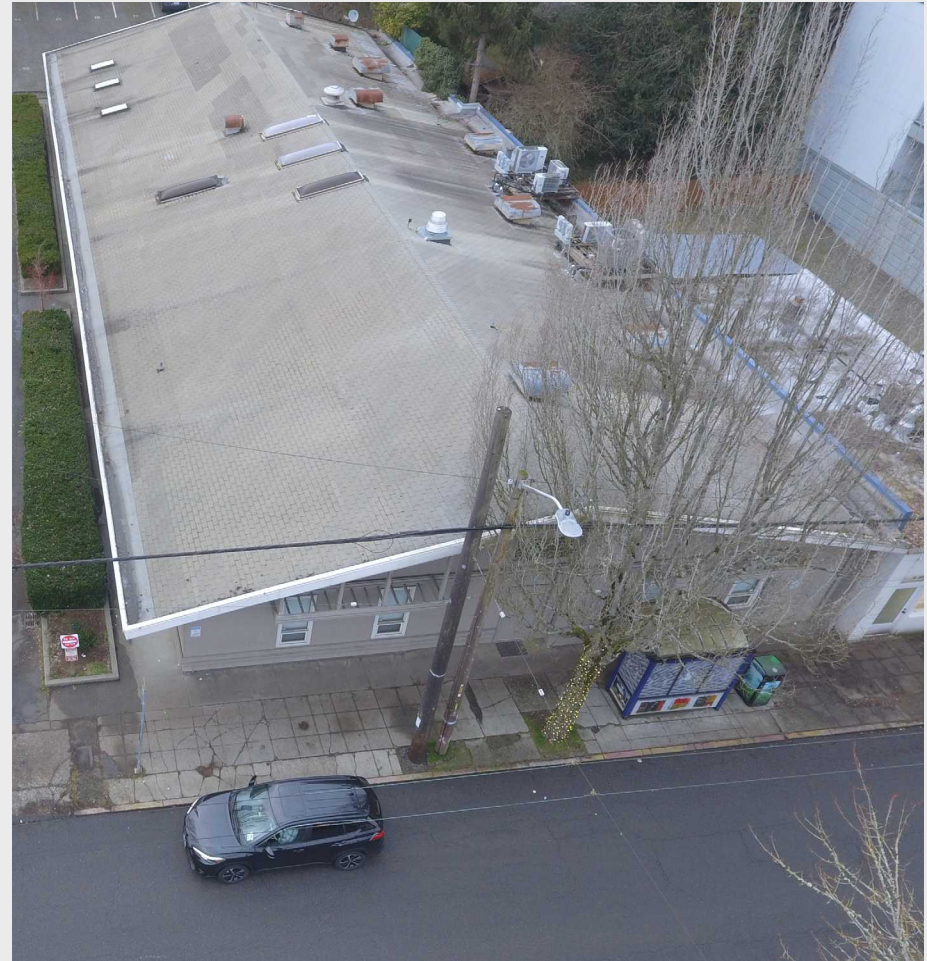
- 9,540 Square feet with high-end finishes
- Currently configured as 13 independent offices and one large suite
- 2+ per 1000 parking
- Landlord is amenable to a wide variety of office/ retail uses
- Demisable upon request

9,540 SF available office / retail space

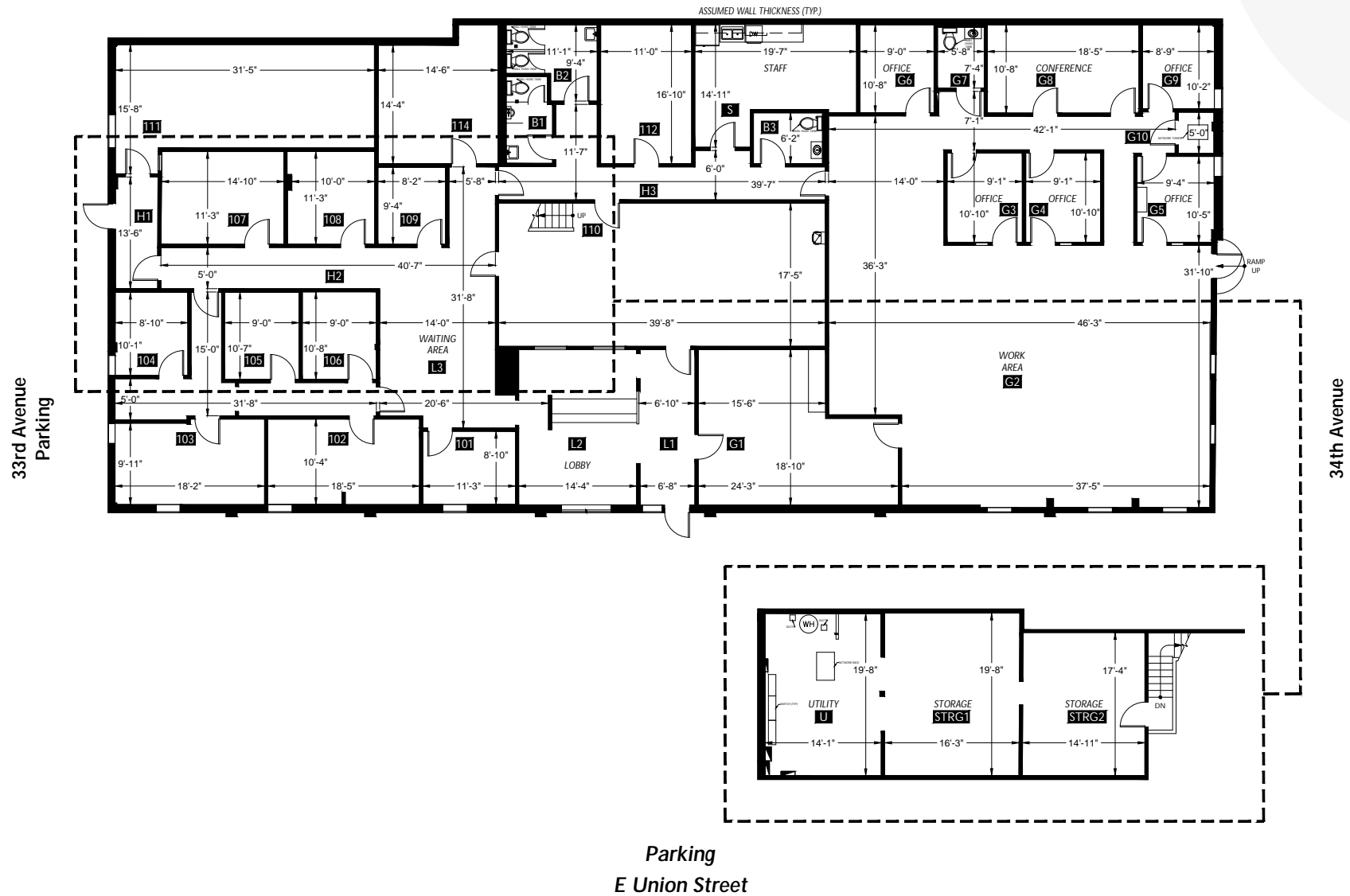
\$32 PSF NNN

91 Walk Score

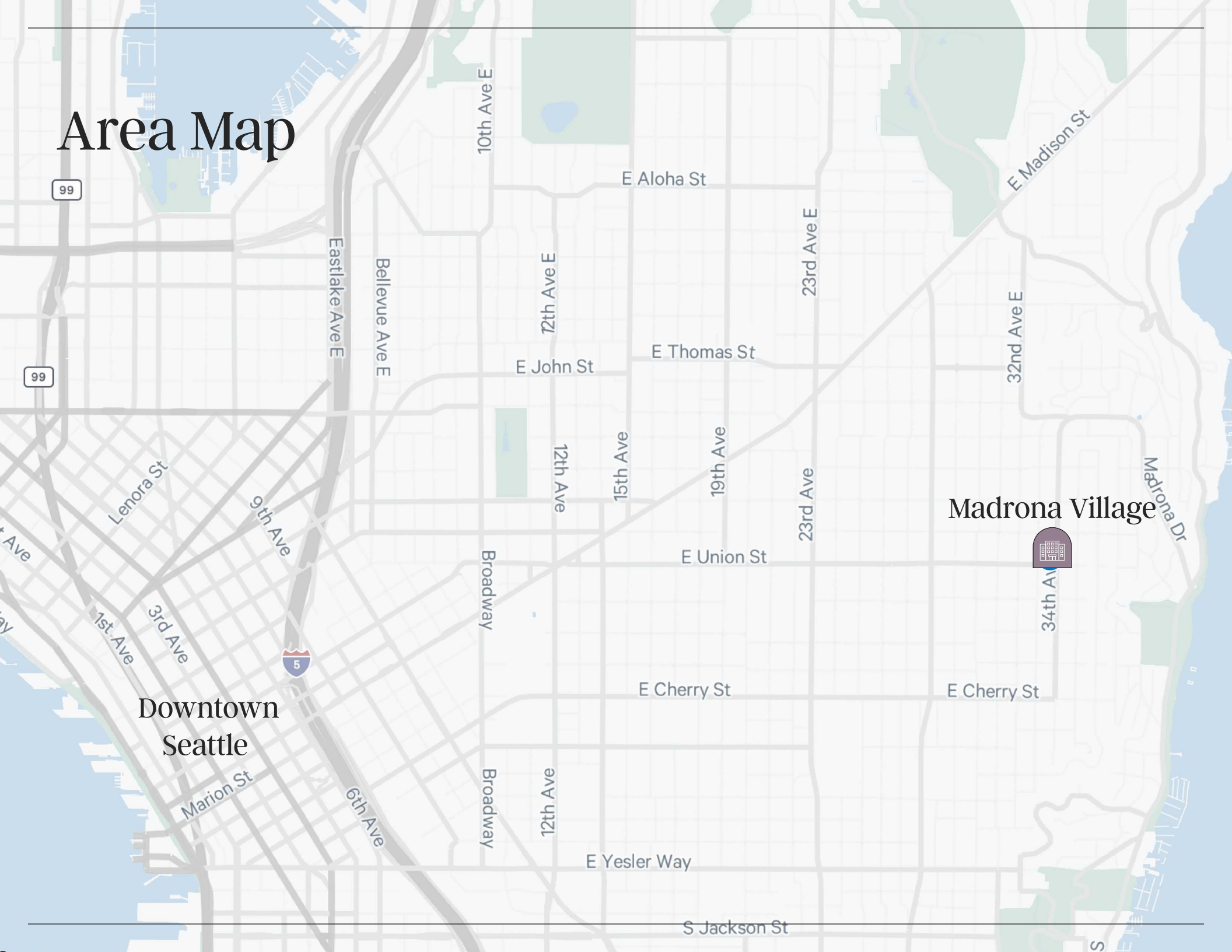
26 Parking stalls



Floor plan



Area Map





For Lease
9,540 SF

3300 E Union, Seattle WA

Madrona Village

Ryan Brunette

Associate
206-794-9199
ryan.brunette@cbre.com

Dave Magee

First Vice President
206-499-6839
dave.magee@cbre.com

CBRE

© 2024 CBRE, Inc. All rights reserved. This information has been obtained from sources believed reliable but has not been verified for accuracy or completeness. CBRE, Inc. makes no guarantee, representation or warranty and accepts no responsibility or liability as to the accuracy, completeness, or reliability of the information contained herein. You should conduct a careful, independent investigation of the property and verify all information. Any reliance on this information is solely at your own risk. CBRE and the CBRE logo are service marks of CBRE, Inc. All other marks displayed on this document are the property of their respective owners, and the use of such marks does not imply any affiliation with or endorsement of CBRE. Photos herein are the property of their respective owners. Use of these images without the express written consent of the owner is prohibited.