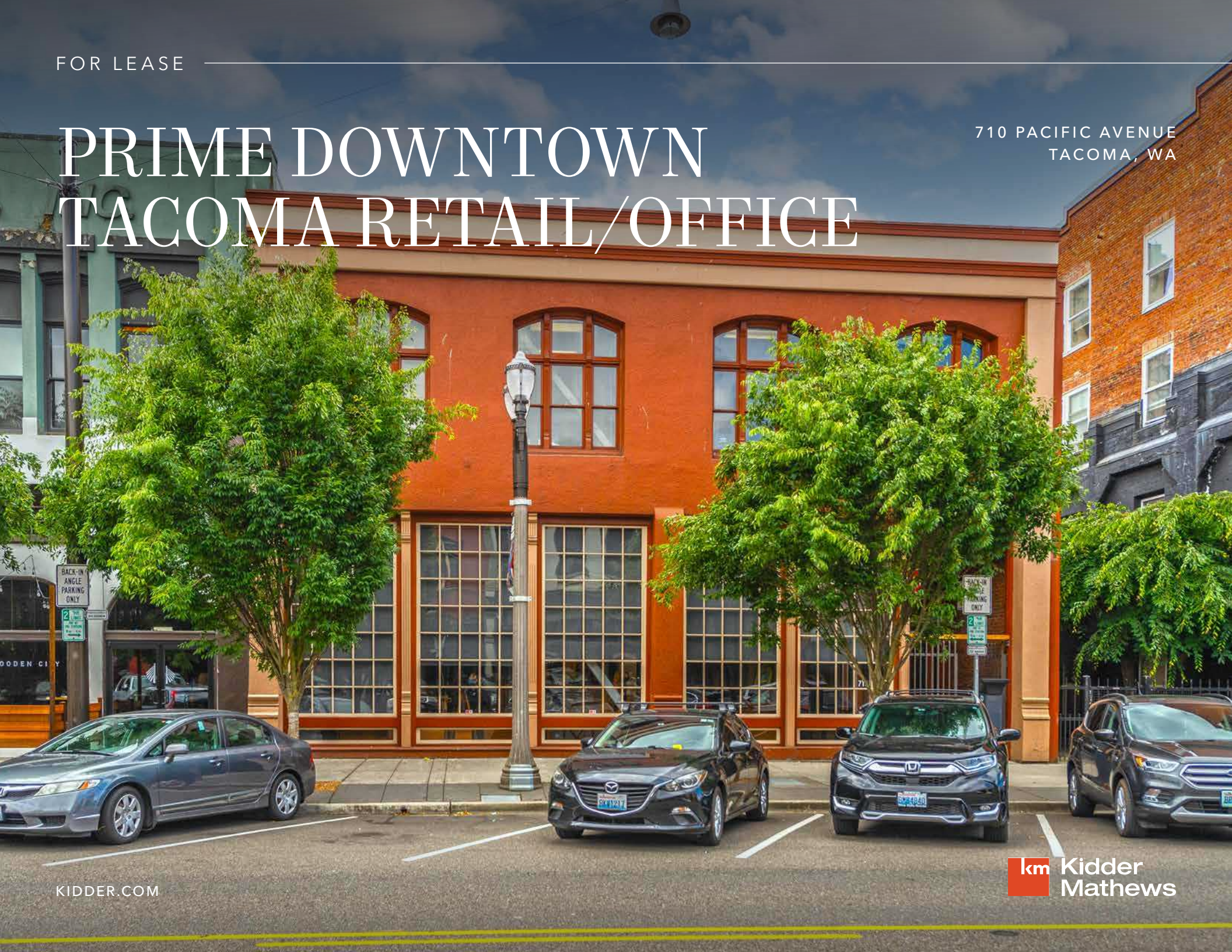


FOR LEASE

# PRIME DOWNTOWN TACOMA RETAIL/OFFICE

710 PACIFIC AVENUE  
TACOMA, WA



KIDDER.COM

**km** Kidder  
Mathews



## *Remodeled Building with Historic Charm*

Full building available - 9,327 SF

Suite 100: 5,016 SF

Suite 200: 2,082 SF

Suite 205: 874 SF

Suite 210: 1,355 SF

\$25.00 - \$28.00 PSF, modified gross

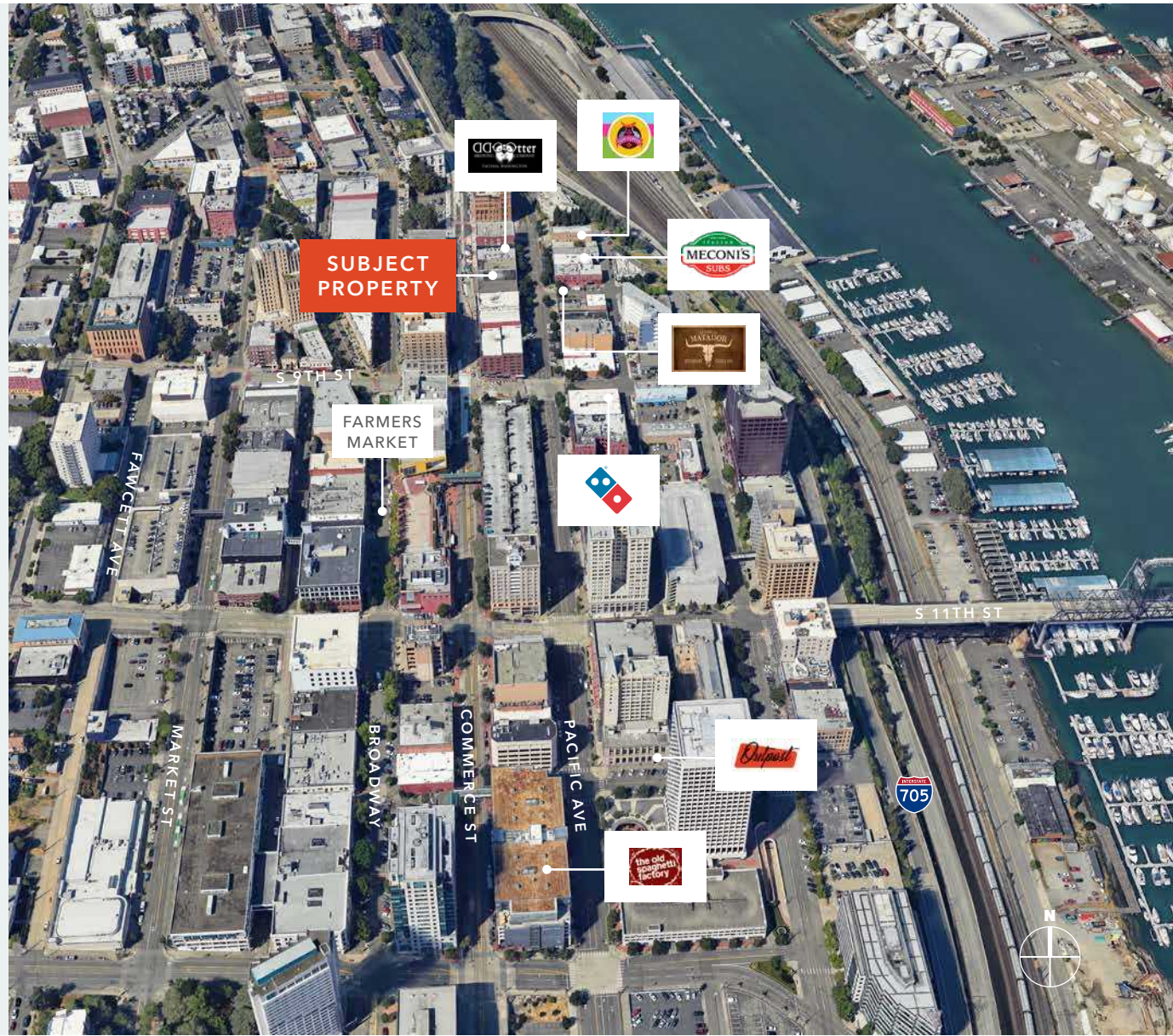
The building allows for installation of a hood and venting system, making it suitable for restaurant use

Public on-street parking directly in front of building and behind the building on Commerce Street/numerous convenient parking garages nearby

Historic charm, seismic upgrades, high ceilings with open beam construction, exceptional natural light

In the heart of Downtown Tacoma's entertainment district

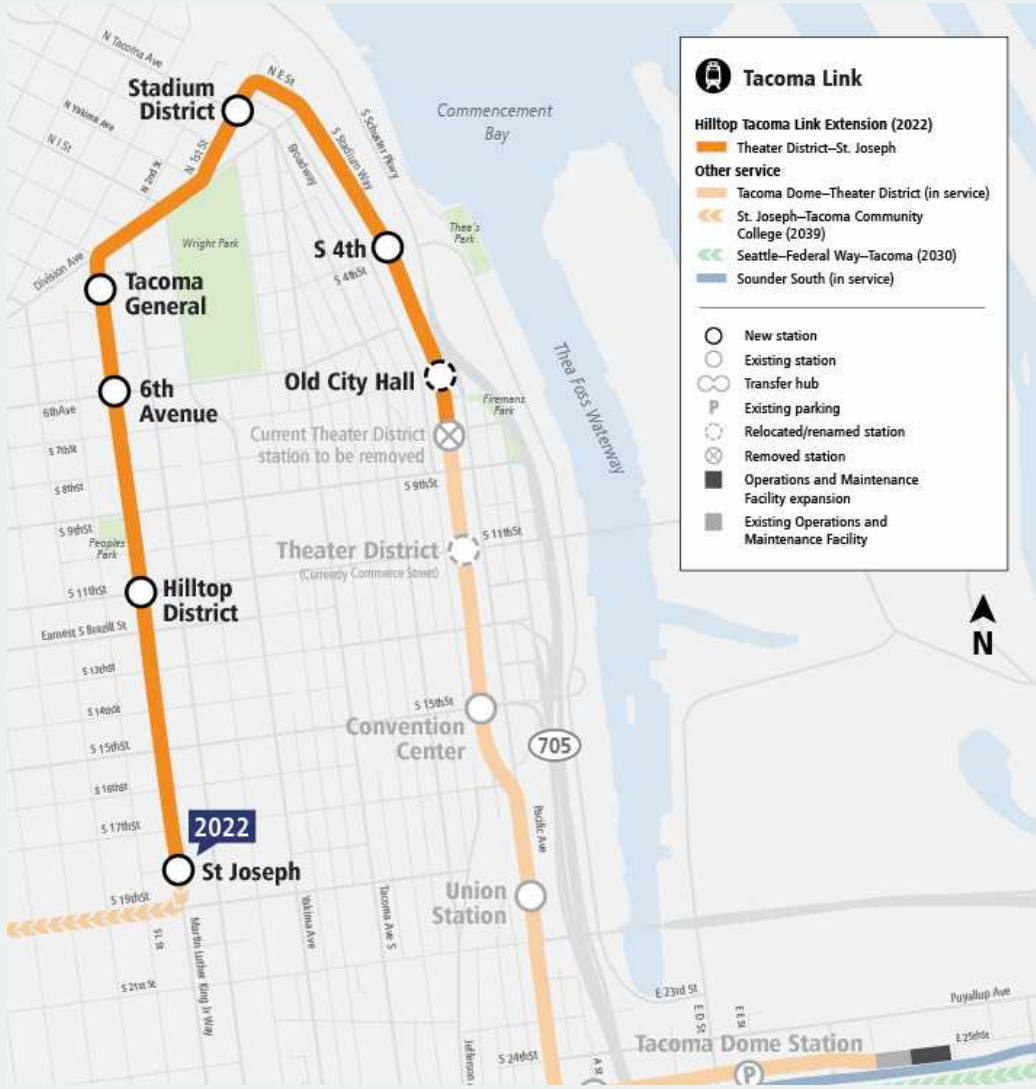
Near "Link" Light Rail Station and numerous restaurants including McMenamins, Matador, Wooden City, etc.







LINK ROUTE | LINK TO CONTINUE TO STADIUM DISTRICT



Source: Sound Transit

# FIRST FLOOR PLAN

5,016 SF

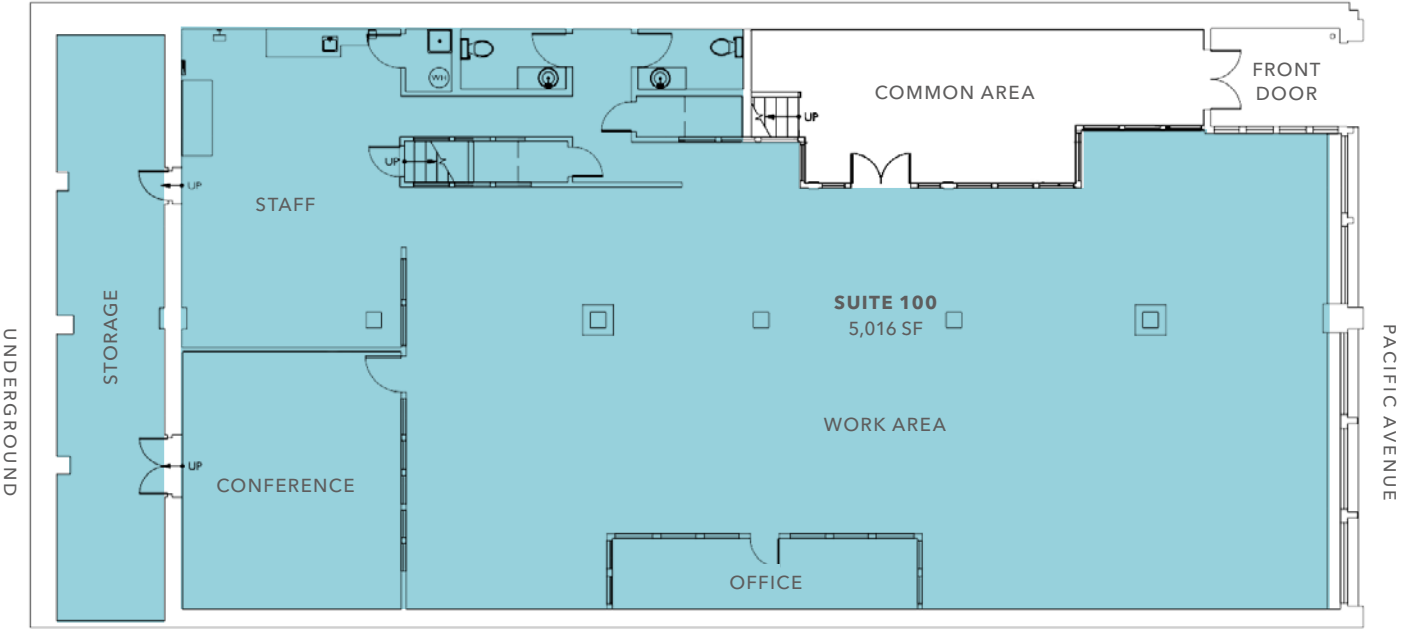
SUITE 100

\$25.00 - \$28.00

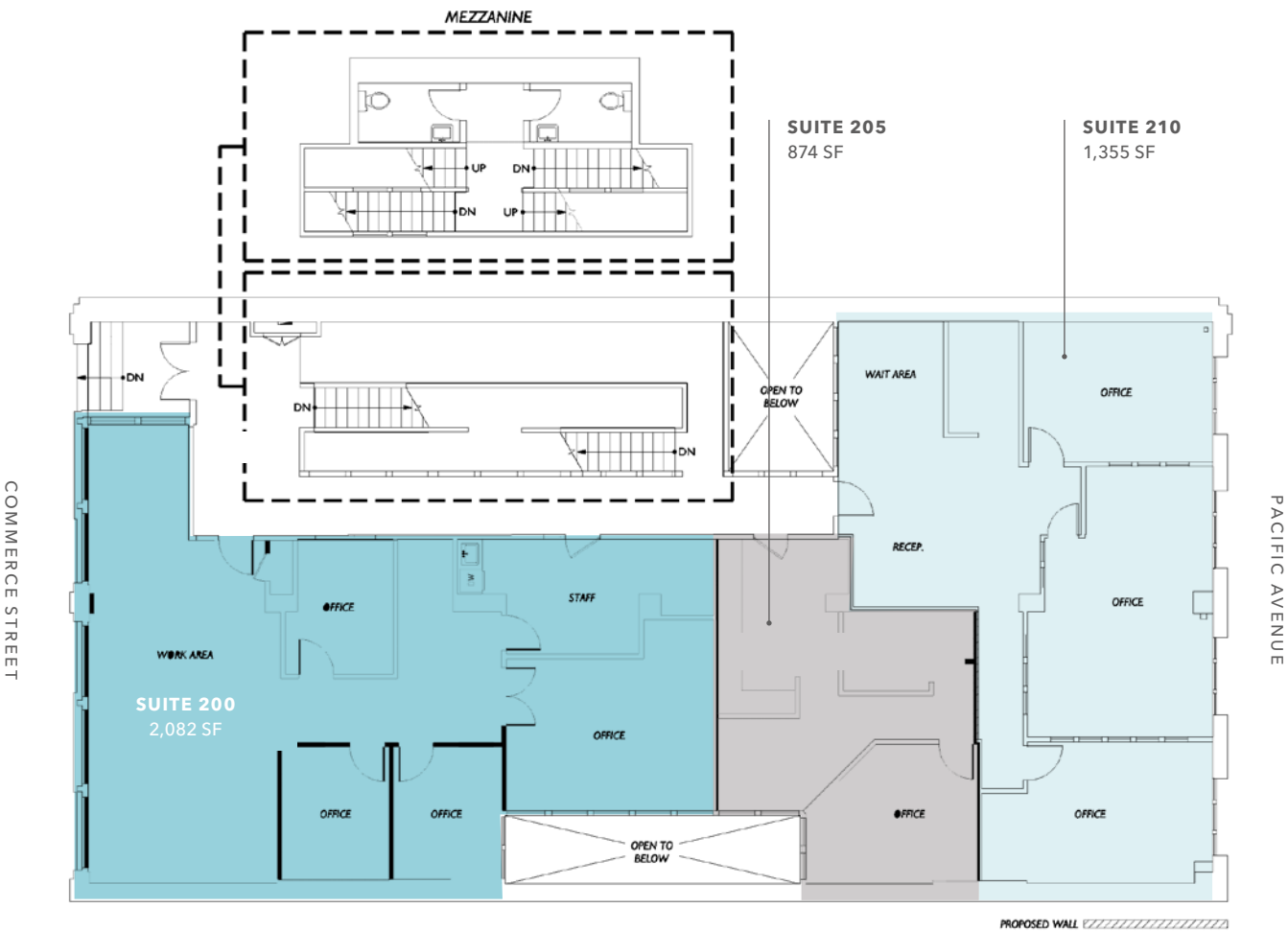
PSF, MODIFIED GROSS

NOW

AVAILABLE



SECOND FLOOR PLAN



2,082 SF

SUITE 200

874 SF

SUITE 205

1,355 SF

SUITE 210

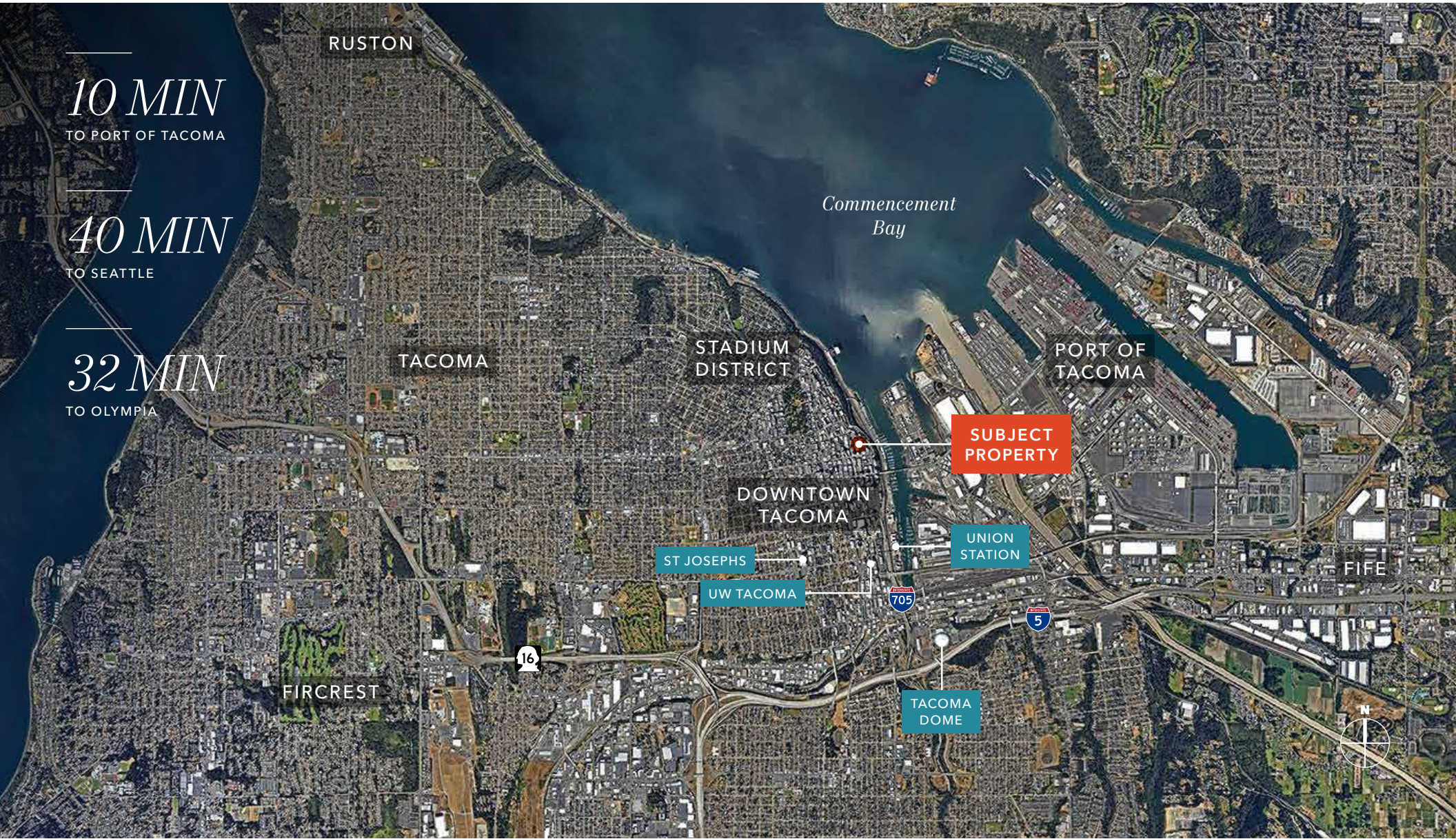
\$25.00 - \$28.00

PSF, MODIFIED GROSS

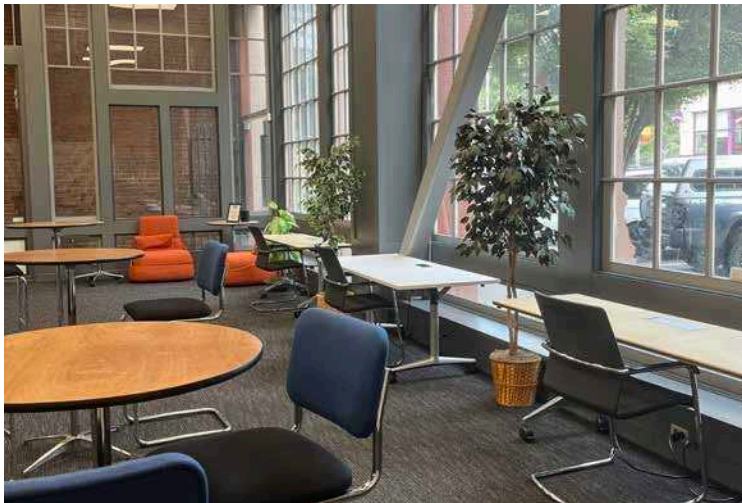
NOW

AVAILABLE











# 710 PACIFIC AVE

*Exclusively leased by*

**WILL FRAME**

253.948.6895

[will.frame@kidder.com](mailto:will.frame@kidder.com)

**DREW FRAME, SIOR**

253.948.7032

[drew.frame@kidder.com](mailto:drew.frame@kidder.com)

**BLAKE WEBER**

206.898.1231

[blake.weber@kidder.com](mailto:blake.weber@kidder.com)

**NED WHALEN**

206.491.5998

[ned.whalen@kidder.com](mailto:ned.whalen@kidder.com)

[KIDDER.COM](http://KIDDER.COM)

This information supplied herein is from sources we deem reliable. It is provided without any representation, warranty, or guarantee, expressed or implied as to its accuracy. Prospective Buyer or Tenant should conduct an independent investigation and verification of all matters deemed to be material, including, but not limited to, statements of income and expenses. Consult your attorney, accountant, or other professional advisor.

