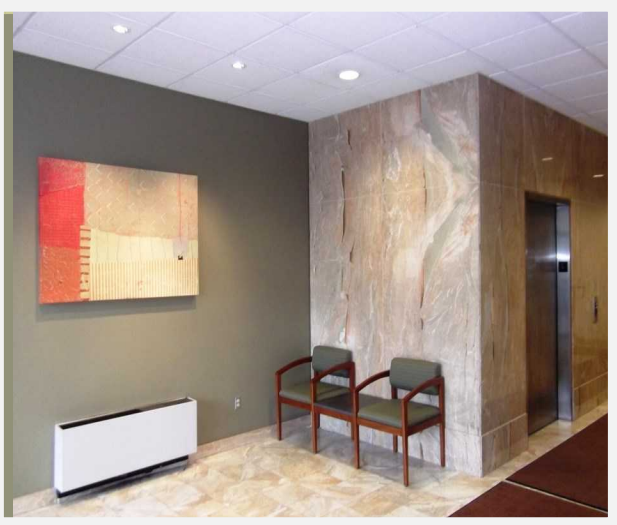


Quality Capital Hill Office Space - For Lease

"Well located Capital Hill office building with on-site parking."



THE JEFFERSON BUILDING AT 14TH AND E. JEFFERSON ST.

5,239 RSF AVAILABLE ON THE 4TH FLOOR

- NW Corner office with views of downtown Seattle.
- 15 privates, conference rooms and large kitchen.
- South of Seattle U. & Cherry Hill Swedish campus.
- Security Entrance Control System & video cameras.
- All floors including garage served by 2 elevators.

MaKensay

Real Estate Services Inc.

Frank R. Buchanan

206-623-9300

frank@makensay.com

www.makensay.com

 **MaKensay**
REAL ESTATE SERVICES INC.

The information contained herein has been provided by the owner or obtained from sources we deem reliable, but all tenants and purchasers should fully investigate all relevant information before entering into a lease or a purchase of the building.