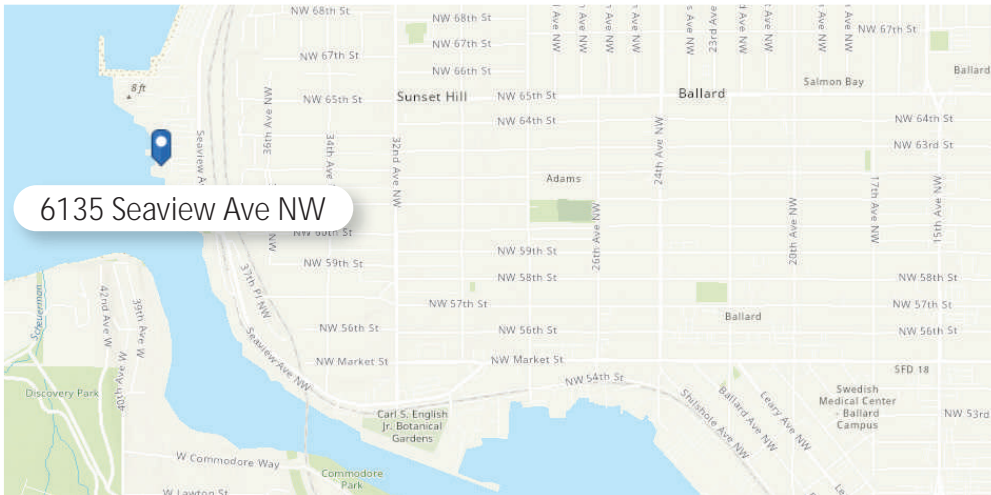


FOR LEASE

BALLARD WATERFRONT MEDICAL/OFFICE SPACE
SHILSHOLE PLACE - 6135 SEAVIEW AVENUE NW | SEATTLE, 98107



PROPERTY FEATURES

- 2nd floor medical and private office spaces available.
- Located next door to Ray's Boathouse near the Ballard Locks and Golden Gardens
- Abundant parking and elevator serviced
- Office spaces taken "as-is"
- 2024 estimated NNN \$8.00/sf/yr

Type	Unit	SF	Rental Rate	+NNN
OFFICE	2A	450 sf	\$25/sf/yr	\$8.00/sf/yr
OFFICE	2F	588 sf	\$22/sf/yr	\$8.00/sf/yr
OFFICE	2G	500 sf	\$22/sf/yr	\$8.00/sf/yr
OFFICE	3	2,757	\$28/sf/yr	\$8.00/sf/yr



**ANDY
RANGLES**

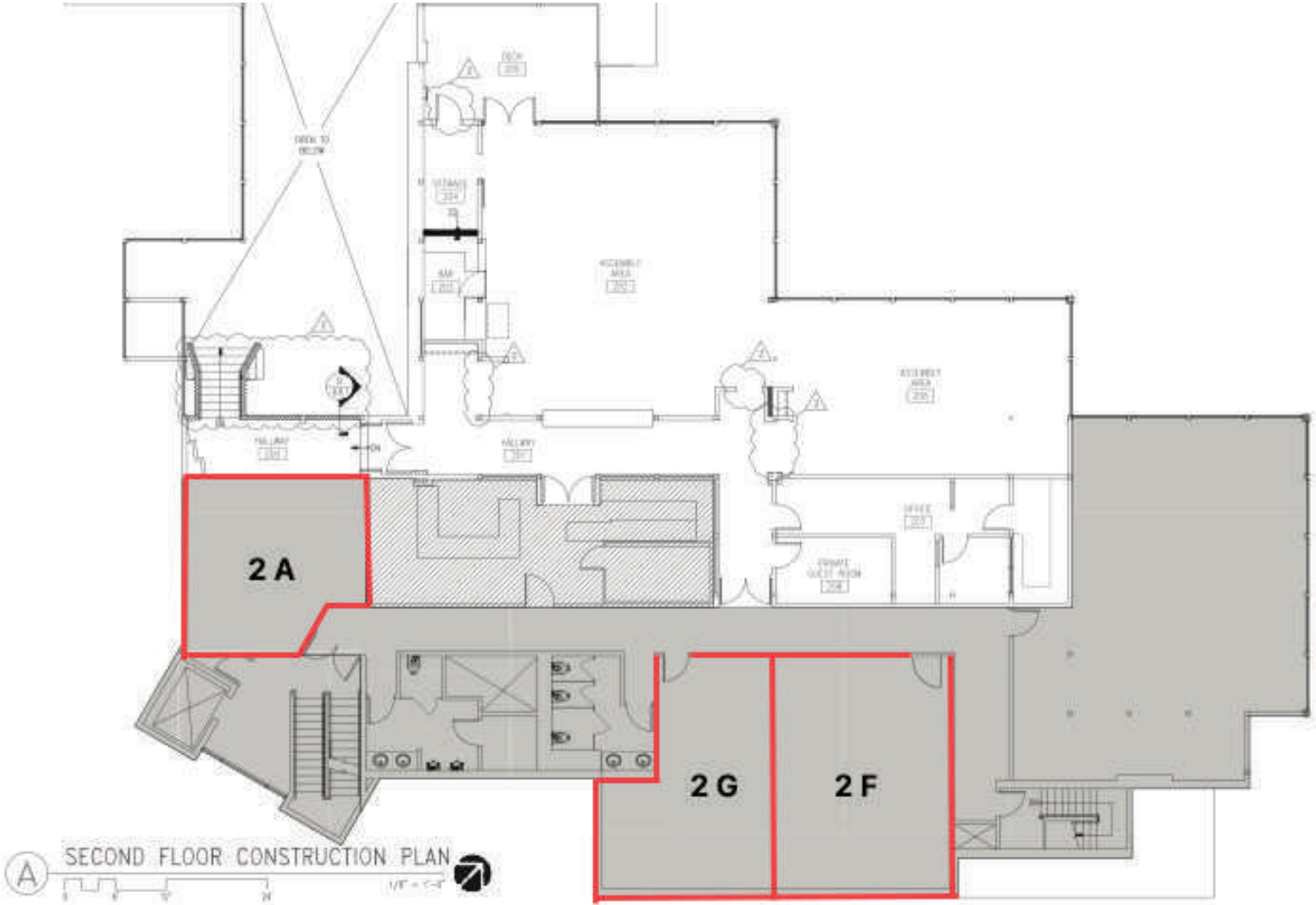
206.405.0090
andy@ewingandclark.com

**TOM
GRAFF**

206.295.1445
tomgraff@ewingandclark.com

FLOOR PLAN

SHILSHOLE PLACE - 6135 SEAVIEW AVENUE NW | SEATTLE, 98107



Not to Scale



**ANDY
RANGLES**

206.405.0090
andy@ewingandclark.com

**TOM
GRAFF**

206.295.1445
tomgraff@ewingandclark.com

PHOTOS

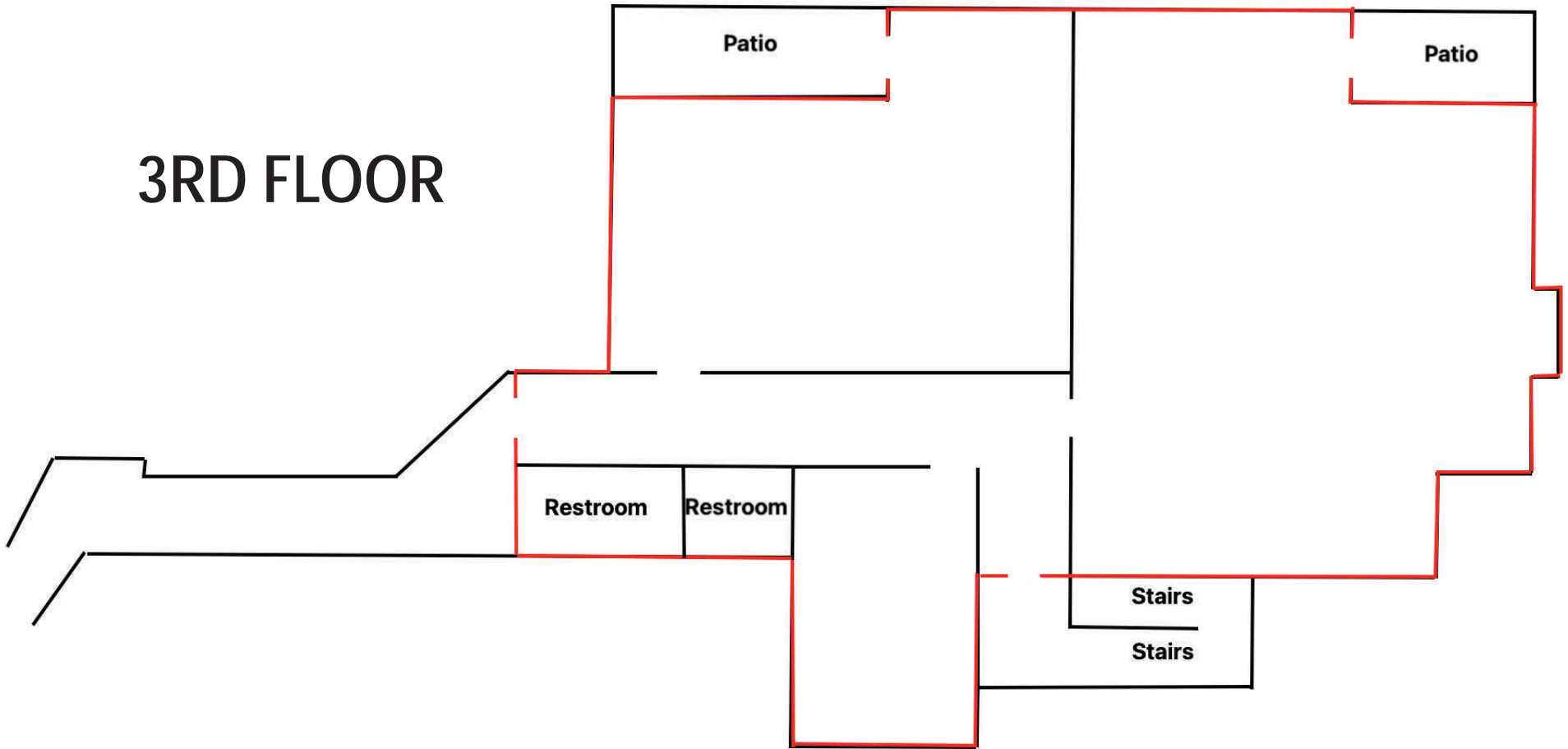
SHILSHOLE PLACE - 6135 SEAVIEW AVENUE NW | SEATTLE, 98107



FLOOR PLAN

SHILSHOLE PLACE - 6135 SEAVIEW AVENUE NW | SEATTLE, 98107

3RD FLOOR



PHOTOS

SHILSHOLE PLACE - 6135 SEAVIEW AVENUE NW | SEATTLE, 98107



**ANDY
RANDLES**

206.405.0090
andy@ewingandclark.com

**TOM
GRAFF**

206.295.1445
tomgraff@ewingandclark.com

AERIAL MAP

SHILSHOLE PLACE - 6135 SEAVIEW AVENUE NW | SEATTLE, 98107



**ANDY
RANGLES**

206.405.0090
andy@ewingandclark.com

**TOM
GRAFF**

206.295.1445
tomgraff@ewingandclark.com