

FOR LEASE
RETAIL/OFFICE SPACE
THE HARP BUILDING
3860 Bridge Way N Seattle, WA 98103



For more information please contact:

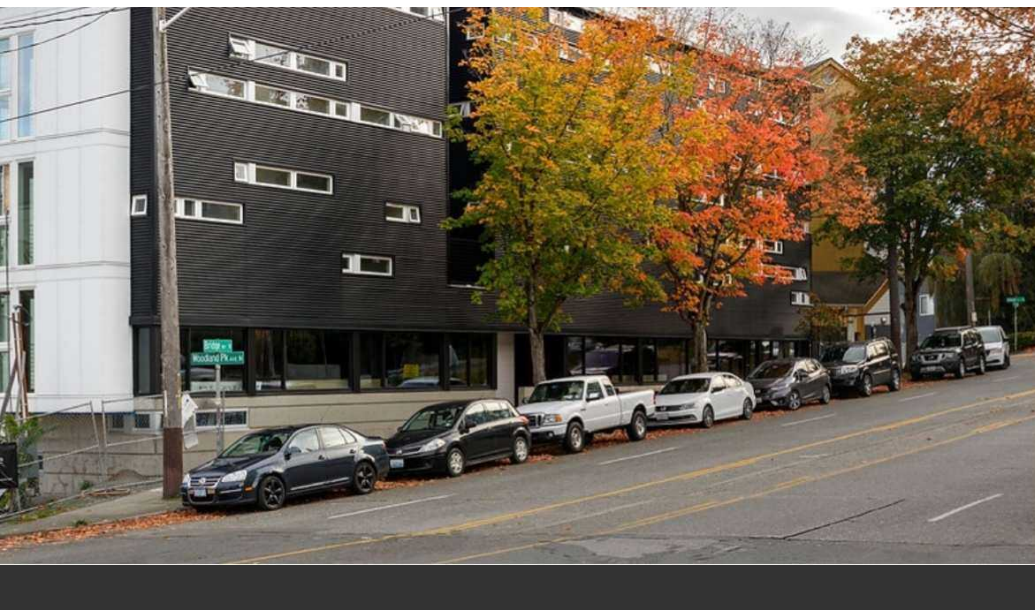
LAURA MILLER
laura@gibraltarusa.com
206.351.3573

SAM BENTON
samb@gibraltarusa.com
312.550.8825



3860 BRIDGE WAY N, SEATTLE, WA 98103

THE HARP BUILDING



PROPERTY HIGHLIGHTS

- Available now
- Set on a prominent triangle corner in Wallingford, The Harp Building is a 5-story building comprised of 19 apartments and 4 commercial spaces
- Beautiful, modern design by **KOArchitecture**
- Vanilla shell buildout: concrete floors, ADA restroom, 200 amp 3 phase electrical panel, sheetrock installed, heat (no A/C)
- Ideal for salon/skincare, retail, service office, physical therapist, fitness, art gallery, coffee shop
- Surrounding neighborhood businesses include: Kamonegi, Sea Wolf Bakers, Aroom Coffee, All the Best Pet Care, Emerald City Athletics, EVO, Doce Donuts, Haerfest



43

TRANSIT SCORE



84

WALK SCORE



91

BIKE SCORE



92,205

TOTAL POPULATION



43,215

TOTAL HOUSEHOLDS



\$121,892

MEDIAN INCOME

* Estimated 2024 Demographics based on a 2 mile radius

3860 BRIDGE WAY N, SEATTLE, WA 98103

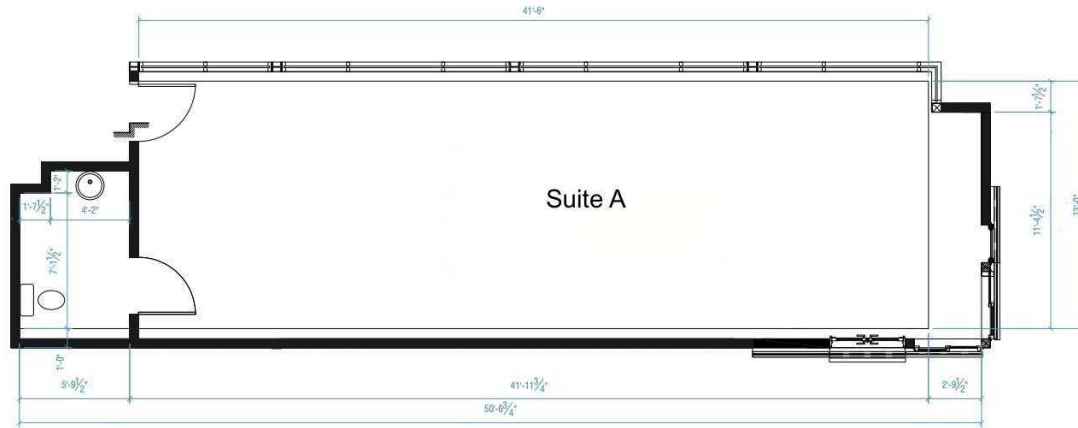
THE HARP BUILDING



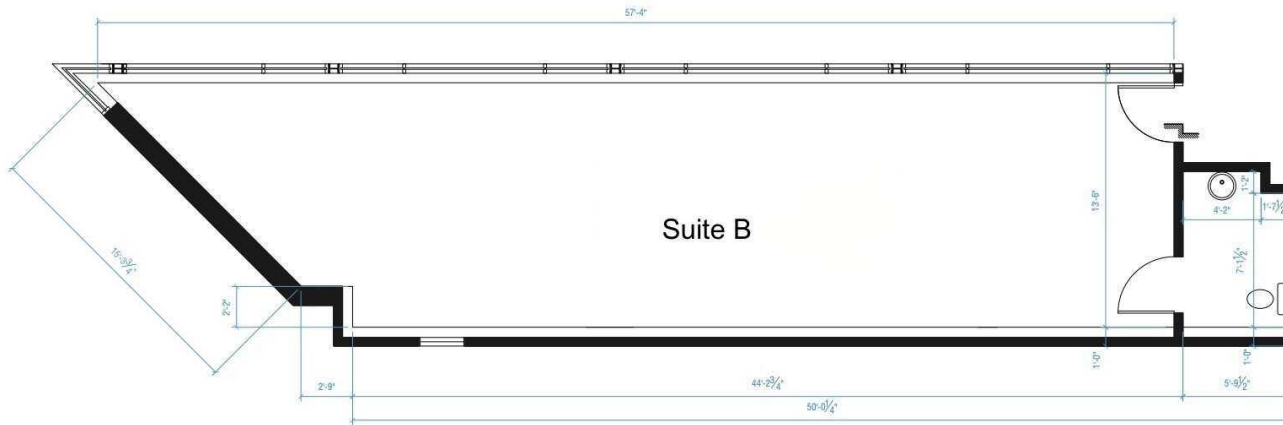
AVAILABLE SPACES

SUITE	SIZE (SF)	EST. NNN	LEASE RATE	DESCRIPTION
■ Suite A	750 SF	\$8.50	\$35.00 SF/yr	Light-filled space, ideal for salon, retail, service office, physical therapist, fitness, art gallery, coffee shop. Available now.
■ Suite B	950 SF	\$8.50	\$35.00 SF/yr	Light-filled space, ideal for salon, retail, service office, physical therapist, fitness, art gallery, coffee shop. Available now.

THE HARP BUILDING



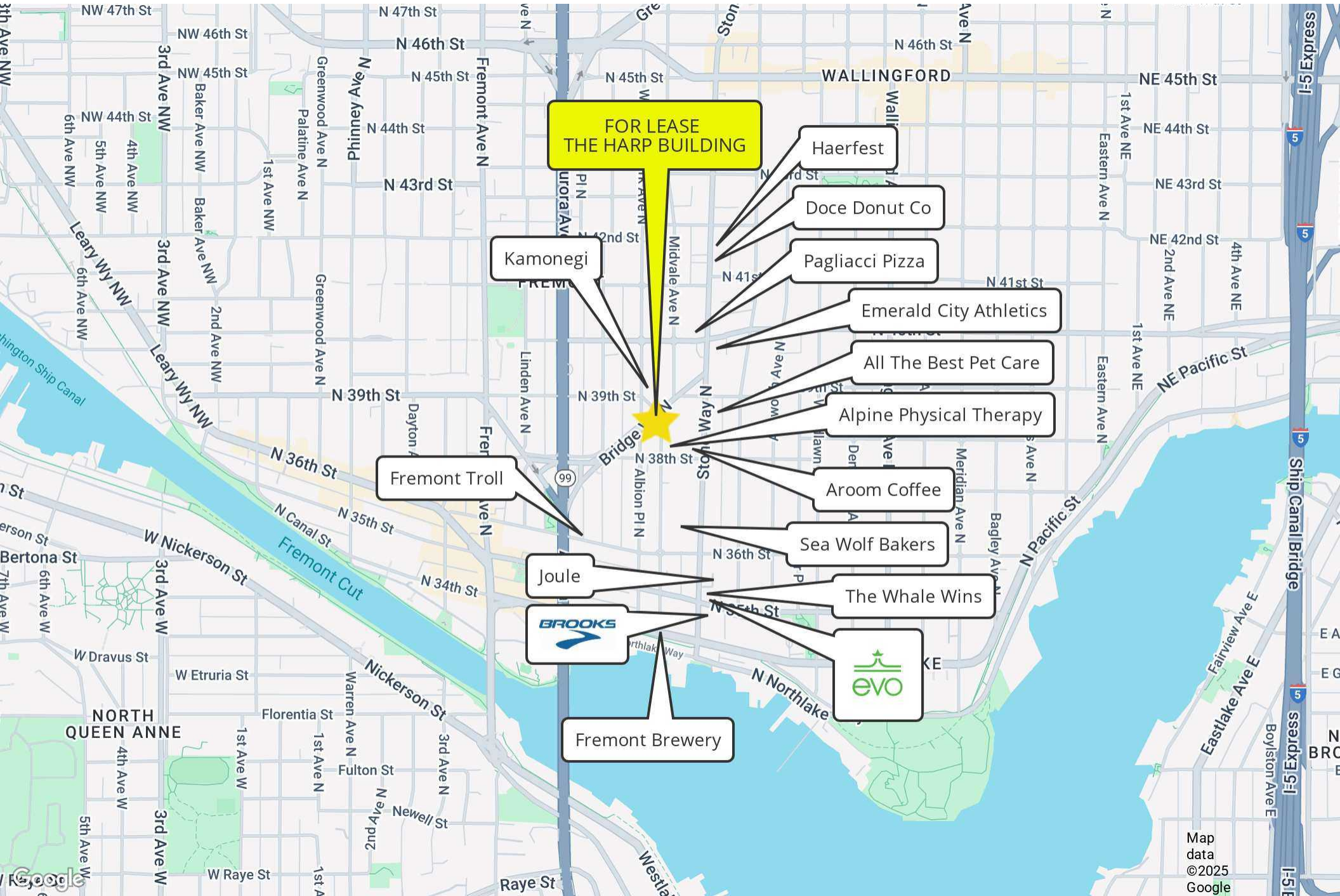
PROJECT NORTH
COMMERCIAL UNIT 3 (LEVEL 2) ①
SCALE: 1/8" = 1'-0"



PROJECT NORTH
COMMERCIAL UNIT 4 (LEVEL 2) ①
SCALE: 1/8" = 1'-0"

3860 BRIDGE WAY N, SEATTLE WA 98103

THE HARP BUILDING



FOR LEASE
THE HARP BUILDING

Kamonegi

Haerfest

Doce Donut Co

Pagliacci Pizza

Emerald City Athletics

All The Best Pet Care

Alpine Physical Therapy

Fremont Troll

Aroom Coffee

Sea Wolf Bakers

Joule

The Whale Wins



Fremont Brewery