

Northwest Corporate Park Building D

600 South Brandon Street, Seattle, WA 98108



Exclusively marketed by:



JOHN VERNON
+1 425 586 5638
jvernon@nai-psp.com

TAMIR OHAYON
+1 425 586 5627
tohayon@nai-psp.com

BOB SWAIN, CCIM
+1 425 586 5622
bswain@nai-psp.com

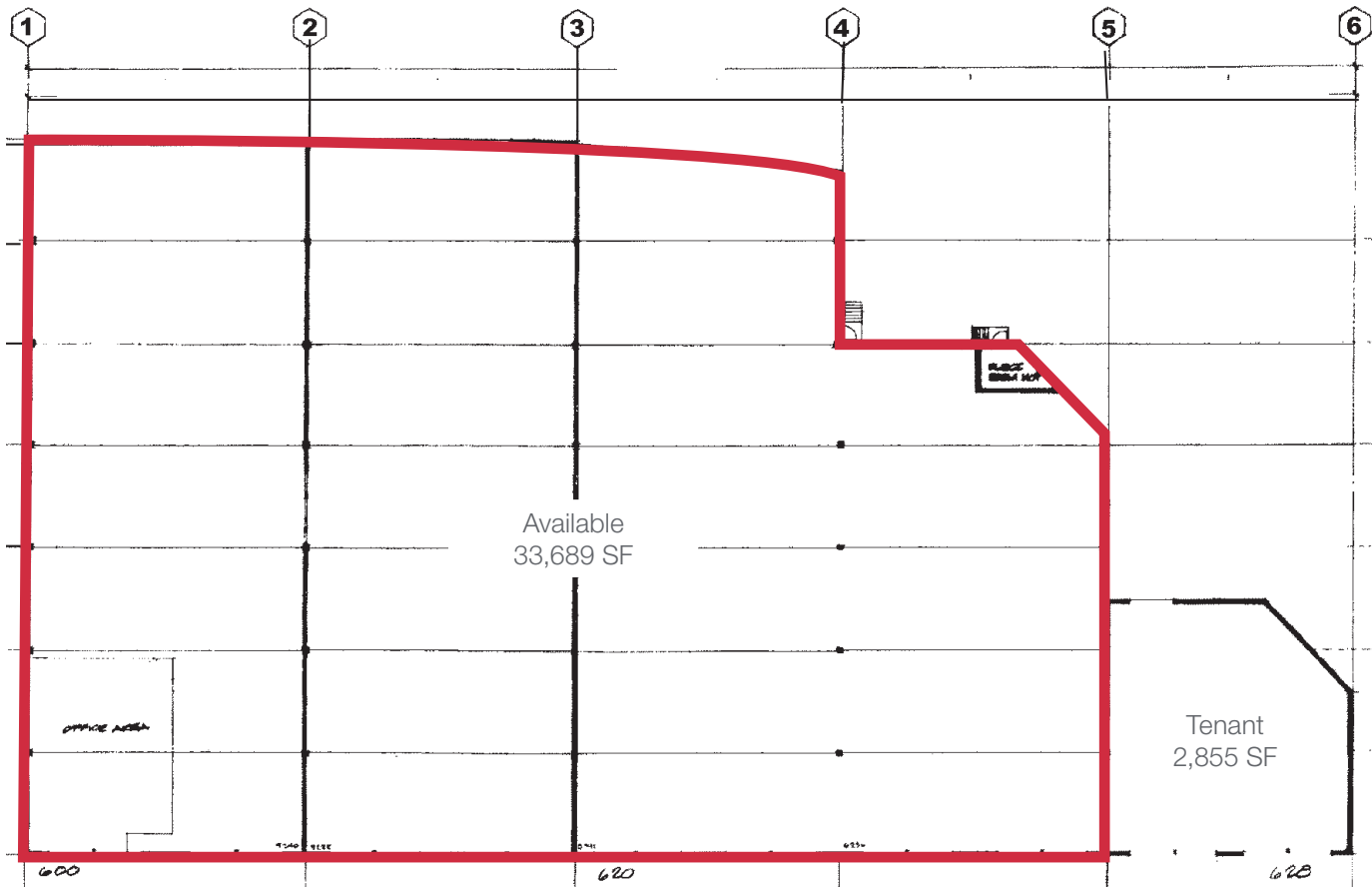
600 South Brandon Street

Seattle, WA



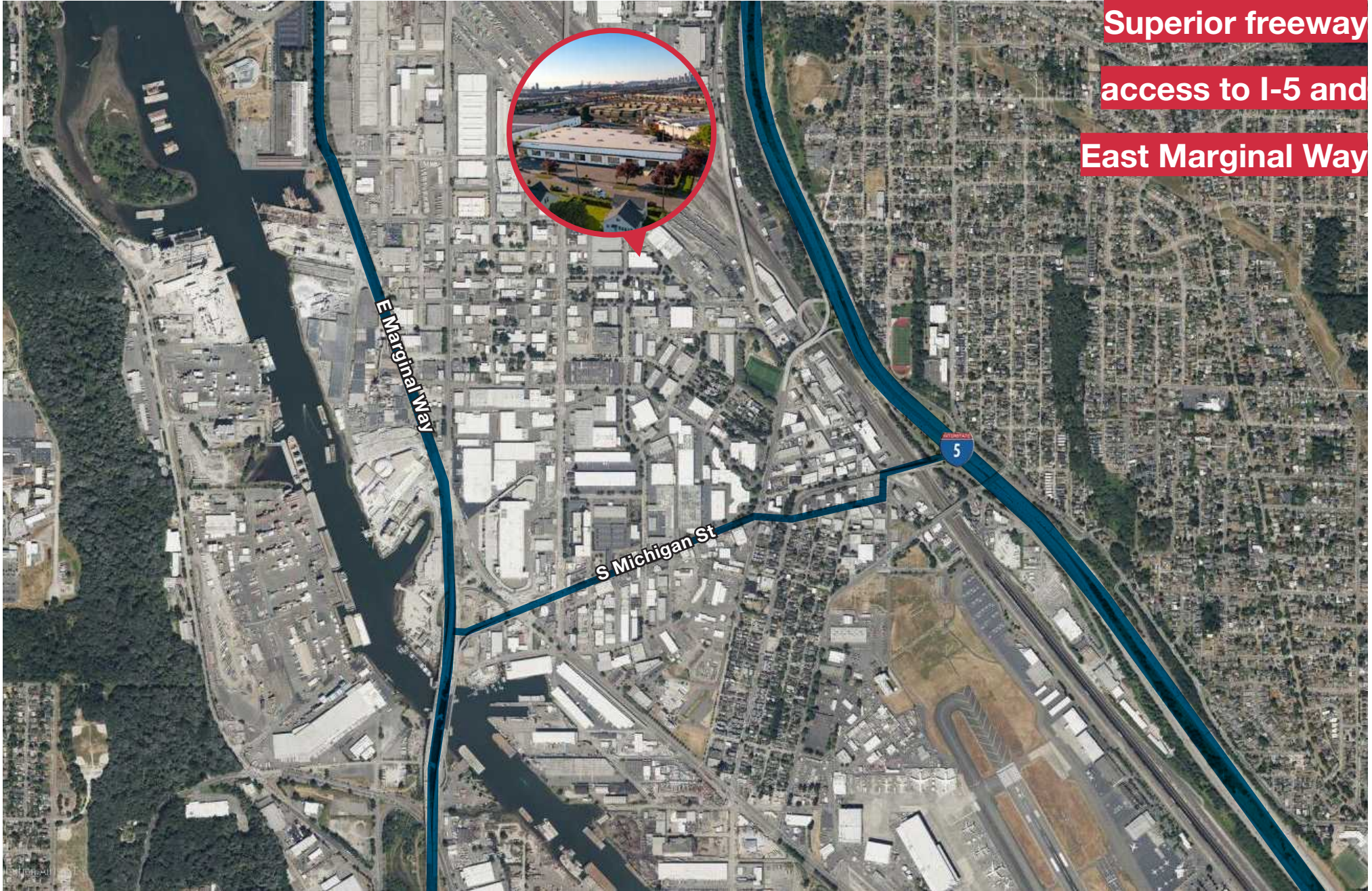
Northwest Corporate Park, Building D

NAI Puget Sound Properties is pleased to present an opportunity to lease a prime office/warehouse space in Georgetown.



IG2-85
Zoning

TOTAL SF	33,689 SF
OFFICE SF	3,000 SF
DOCK DOORS	10
CLEAR HEIGHT	22'
AVAILABLE	Now
LEASE RATE	\$1.35 shell / \$1.25 office NNN (2025) \$0.463



Superior freeway

access to I-5 and

East Marginal Way

E Marginal Way

S Michigan St

5

Georgetown



Located within the industrial market, Georgetown is one of Seattle's oldest neighborhoods. Don't let the label fool you, the neighborhood has a sizable number of office and retail establishments in addition to manufacturing-oriented businesses. Food connoisseurs can enjoy an array of dining options in addition to an assortment of breweries in the area.

Due to its convenient location near the Port of Seattle and the urban core, Georgetown has seen robust growth and leasing activity with low vacancy rates. The area is centrally located with easy access to I-5, Boeing Field, Hwy 99 and minutes from downtown Seattle.

Exclusively marketed by:

John Vernon

+1 425 586 5638

jvernon@nai-psp.com

Tamir Ohayon

+1 425 586 5627

tohayon@nai-psp.com

Bob Swain, CCIM

+1 425 586 5622

bswain@nai-psp.com

NAI Puget Sound
Properties