

# PARKSIDE CENTER

18939 120TH AVE NE | BOTHELL, WA



**NEWMARK**

**MIKE**  
**SCHRECK** | 206.850.7000  
mike.schreck@nmrk.com



# PARKSIDE CENTER

## PROPERTY HIGHLIGHTS

Immediate access to **I-405/SR 522**

Wooded **private setting** adjacent  
to ball fields and North Creek

Free **abundant parking** ratio:  
2.9/1,000 RSF

Four building campus in  
**Bothell's technology corridor**

**Walking distance to food service:**  
Starbucks, Taco Del Mar,  
Greek Pita, Thai Tane Express,  
and Dandy Hot Dogs





# PARKSIDE CENTER

## BUILDING 3

18939 120TH AVE NE

Suite 111      ±5,866 RSF  
Available      6/1/2025  
Asking Rate    \$22.00/SF/YR NNN

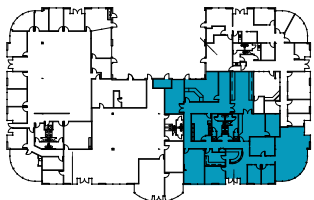
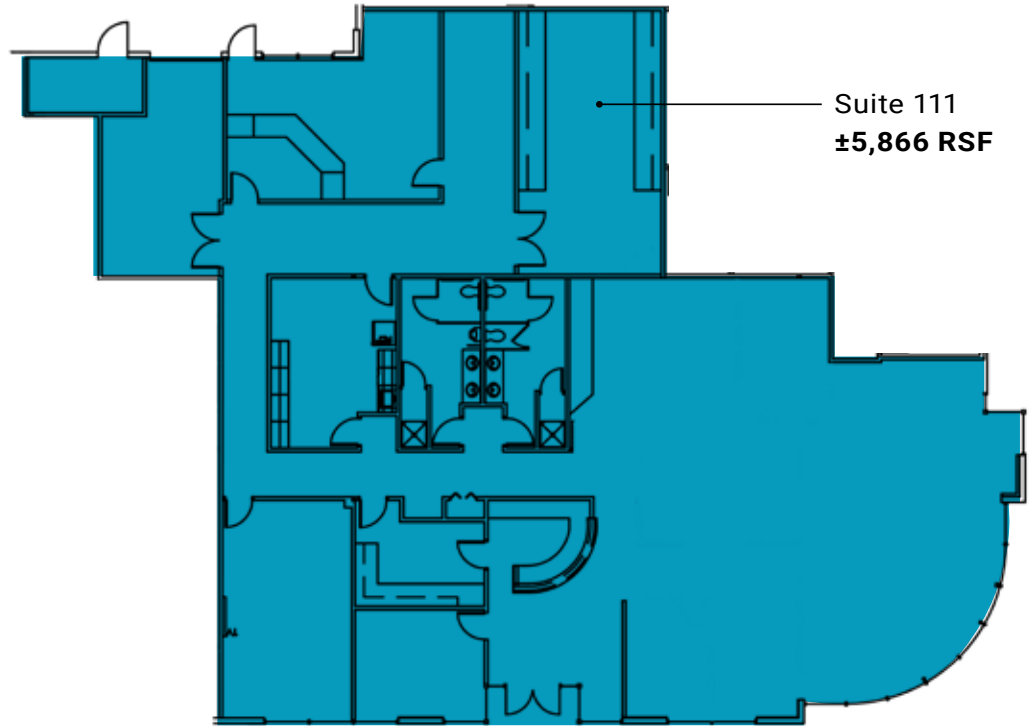
Office/Lab space available 6/1/25

Grade/dock high loading

2.9/1,000 Parking ratio

Interior restrooms with showers

Direct access & signage  
visiblty to 120th Ave NE



# PARKSIDE CENTER

## AMENITIES MAP

### ■ Restaurants, Cafe & Bars

- Culture's Coffee House
- Russell's Restaurant & Loft
- Lori's Deli & Espresso
- Starbucks
- Potbelly Sandwich Shop
- Menchi's Frozen Yogurt
- Beardslee Public House
- Caffè Ladro Bothell
- Starbucks

### ■ Shops & Other Amenities

- Holiday Inn & Suites
- Residence Inn by Marriott
- Country Inn & Suites
- The Home Depot
- 24 Hour Fitness
- Safeway
- QFC
- USPS

### THRASHERS CORNER - 8 minutes

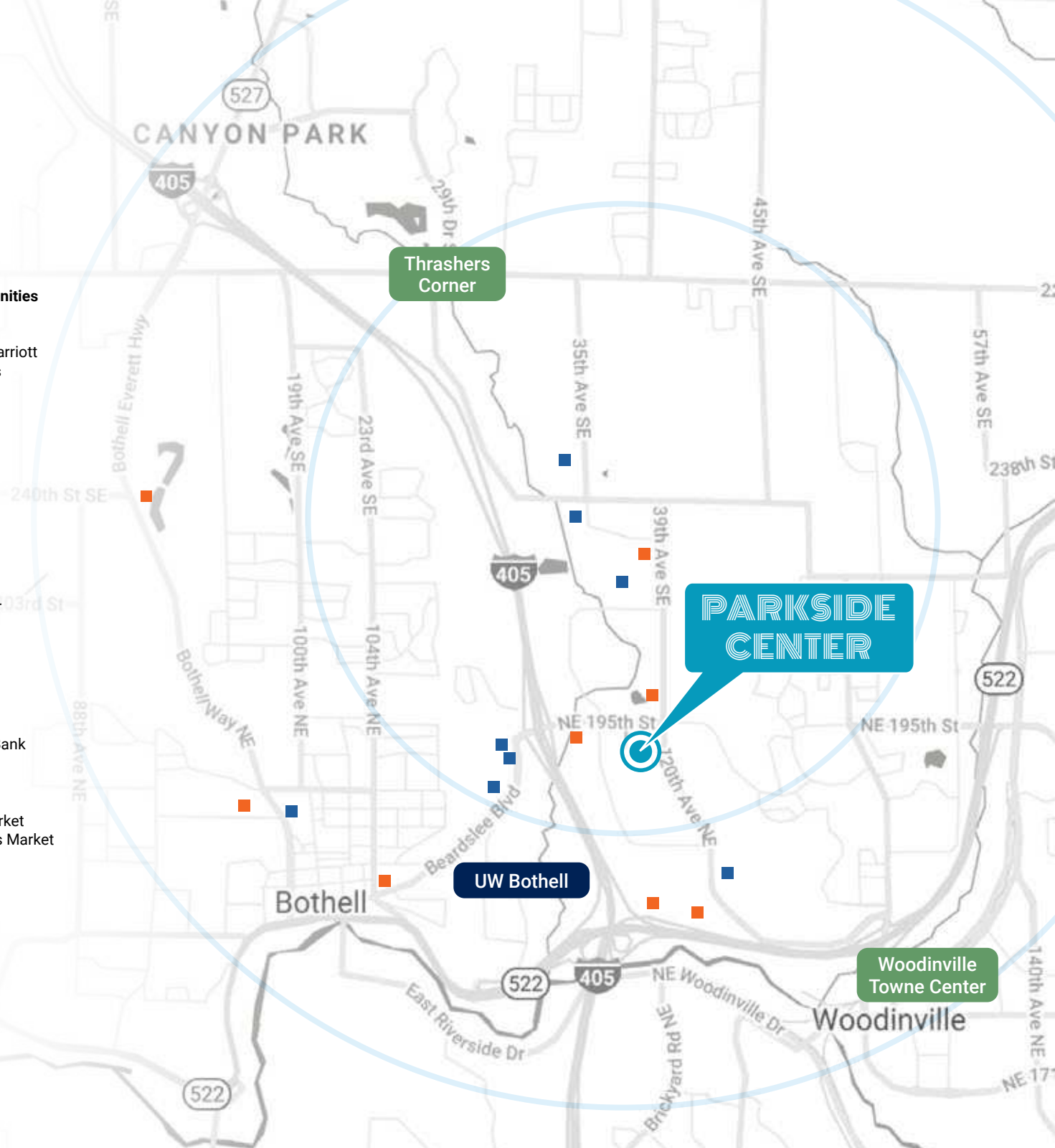
- Original Pancake House
- Dairy Queen Grill & Chill
- Red Robin Gourmet Burgers
- Royal Biryani House
- Samburna Indian
- Sushi Hana
- Panera Bread

- Safeway
- Walgreens
- The UPS Store
- International Marker
- Bank of America
- Key Bank
- Fred Meyer

### WOODINVILLE TOWNE CENTER - 9 minutes

- Teriyaki Bowl
- Seattle Cinnamon Roll
- Pho 175
- Tokyo Japanese Steakhouse
- Racha Thai Cuisine
- Zeeks Pizza
- Rocky Pond Winery
- Truth Teller
- Big Fish Grill
- Panera Bread
- Ezell's Famous Chicken
- Plaza Santa Fe
- Akane Ramen
- Rooney's Food and Spirits
- Woodinville Bagel Bakery
- Topsy Cow
- Matsu Teriyaki
- Chan's Place

- BECU Credit Union
- First Financial NW Bank
- Banner Bank
- US Bank
- Target
- Cost Plus World Market
- Woodinville Farmers Market
- Barnes & Noble
- Ross Dress for Less
- Haggen
- FedEx
- Old Navy
- HomeGoods
- T.J.Maxx
- Value Village
- O'Reilly Auto Parts
- The UPS Store
- Bright Now! Dental
- AMC Woodinville
- Sport Clips Haircuts
- USPS





# PARKSIDE CENTER

18939 120TH AVE NE | BOTHELL, WA

**NEWMARK**

**MIKE  
SCHRECK** | 206.850.7000  
mike.schreck@nmrk.com

The distributor of this communication is performing acts for which a real estate license is required. The information contained herein has been obtained from sources deemed reliable but has not been verified and no guarantee, warranty or representation, either express or implied, is made with respect to such information. Terms of sale or lease and availability are subject to change or withdrawal without notice. 18-0225