



PIKE LOGISTICS

*Reduced Price! 43,000-50,000 SF warehouse
fully renovated and new office.*

1701 PIKE STREET NW, AUBURN, WA

TRAILER

PARKING

ESFR

SPRINKLERS

25'

MAX CLEAR HEIGHT

TRUCK

SCALE

PIKE LOGISTICS

PROPERTY HIGHLIGHTS

50,400 SF total:
- 43,200 SF shell
- 7,200 SF bonus mezzanine storage

Brand-new 2,360 SF office

25' max clear height

10 dock-high doors, cross-loaded for easy
in/out delivery

13 trailer parking stalls

Heavy power

Secured, fenced truck court in rear

Truck scale

\$0.34 est. NNN

50,400

TOTAL SF

7,200

BONUS MEZZANINE SF

43,200

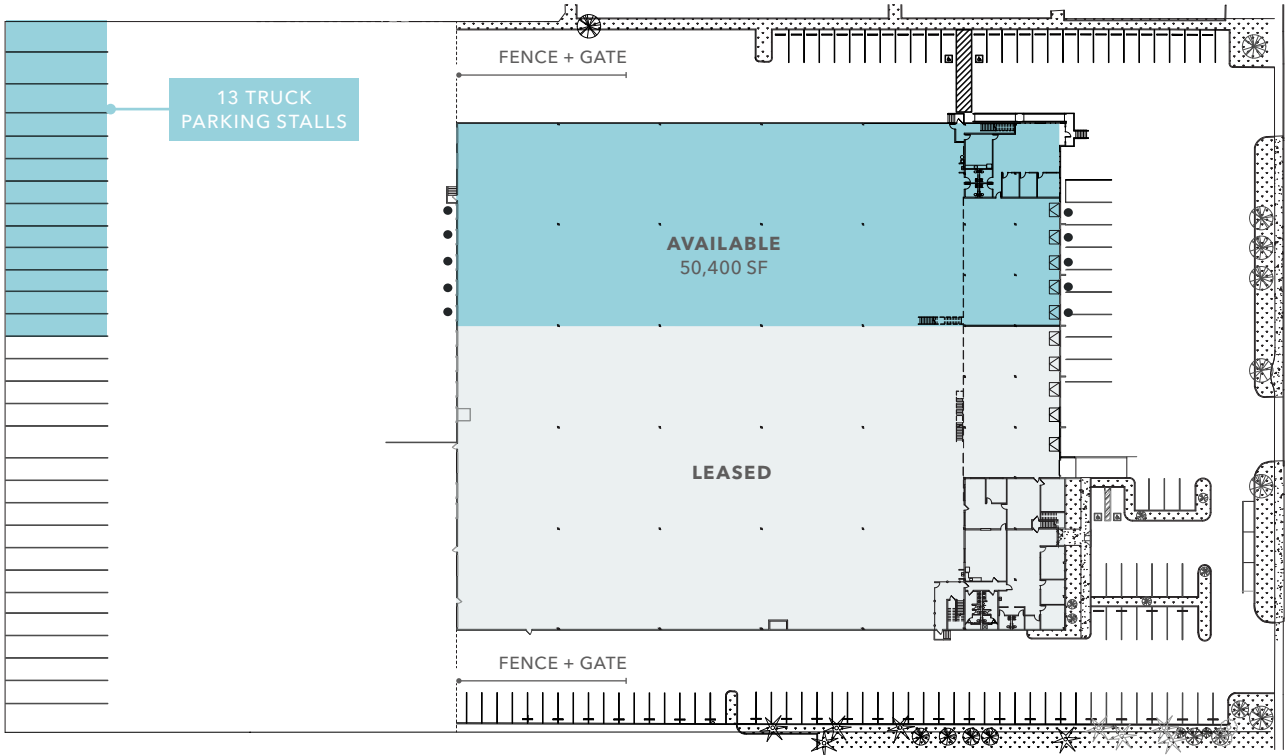
SF SHELL

2,360

OFFICE SF



SITE PLAN



50,400 SF
AVAILABLE

13 STALLS
TRAILER PARKING

TEN
DOCK-HIGH DOORS

LEGEND

● Dock High



HIGHLY- ACCESSIBLE LOCATION

Conveniently located near major
confluences Interstate 5, State Route 167,
and Highway 18

Easy for visitors to locate

18 MIN

TACOMA

3 MIN

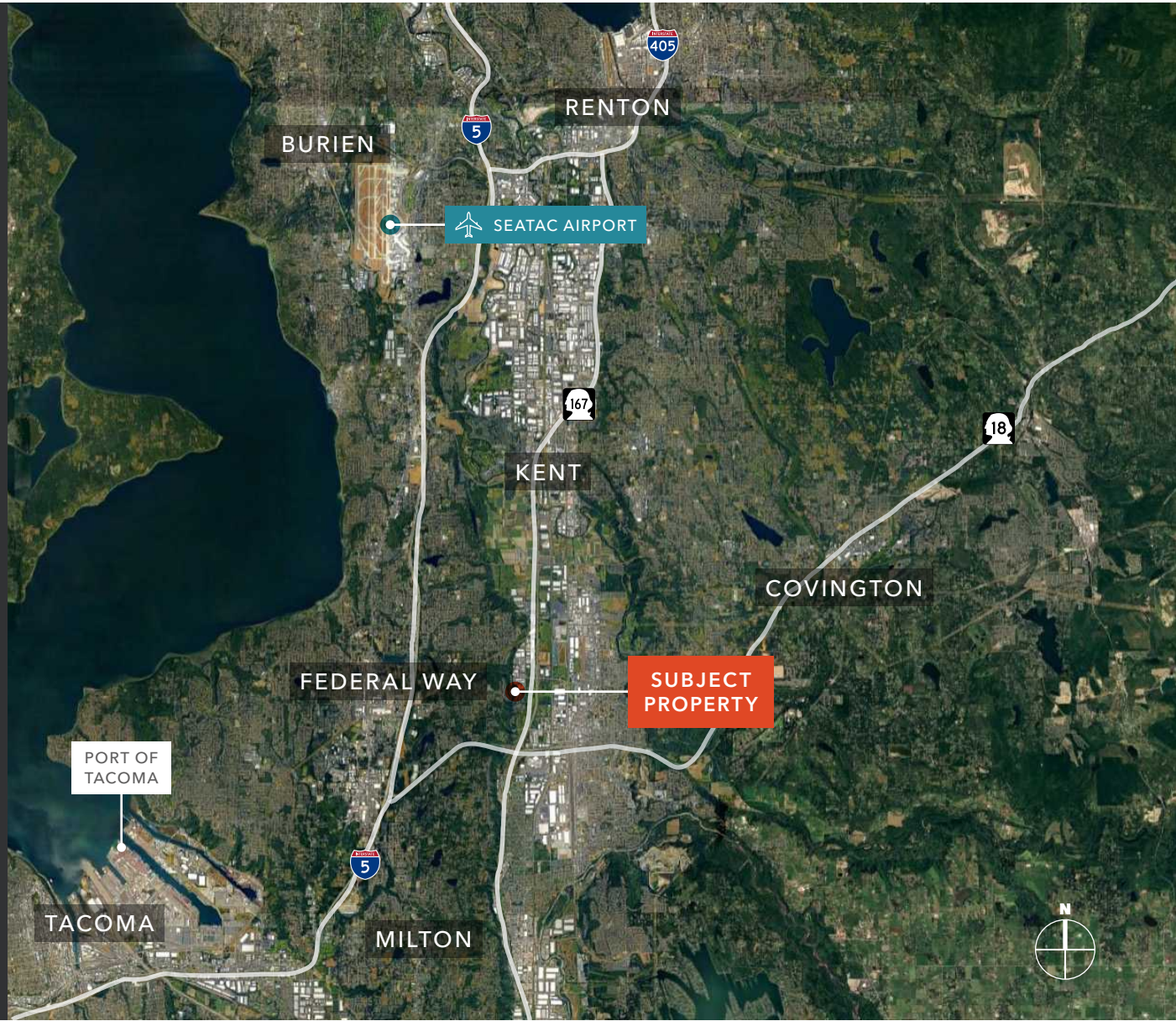
SR-167

21 MIN

PORT OF TACOMA

20 MIN

SEATAC AIRPORT





PIKE LOGISTICS

*For more information on
this property, please contact*

KRAIG HEETER, SIOR
206.248.7313
kraig.heeter@kidder.com

MIKE NEWTON
206.248.7311
mike.newton@kidder.com

KIDDER.COM

This information supplied herein is from sources we deem reliable. It is provided without any representation, warranty, or guarantee, expressed or implied as to its accuracy. Prospective Buyer or Tenant should conduct an independent investigation and verification of all matters deemed to be material, including, but not limited to, statements of income and expenses. Consult your attorney, accountant, or other professional advisor.

