

2670 CRITES ST SW

Sublease | Tumwater

AVAILABLE

RATE REDUCTION

LISTING INFORMATION

ADDRESS:	2670 Crites Street SW, Tumwater, WA
AVAILABLE SF:	20,000 SF / 1,000 SF Office
LEASE RATE:	\$0.75 PSF/Mo Blended (\$15,000 Mo)
TERM:	March 31, 2029
CLEAR HEIGHT:	24'
POWER:	3-Phase Power (600 Amps)
LOADING:	7 Dock High (10' x 9') 3 Grade Level (18' x 12')
COLUMN SPACING:	40' x 50'
COMMENTS:	4 - 18' x 12' grade-level doors, 7 dock-high doors, ample parking, small yard in rear of building. Office is "As-Is", includes 2 private offices, reception area, work/break room, two 2-stall restrooms (men's and women's). Zoned industrial.



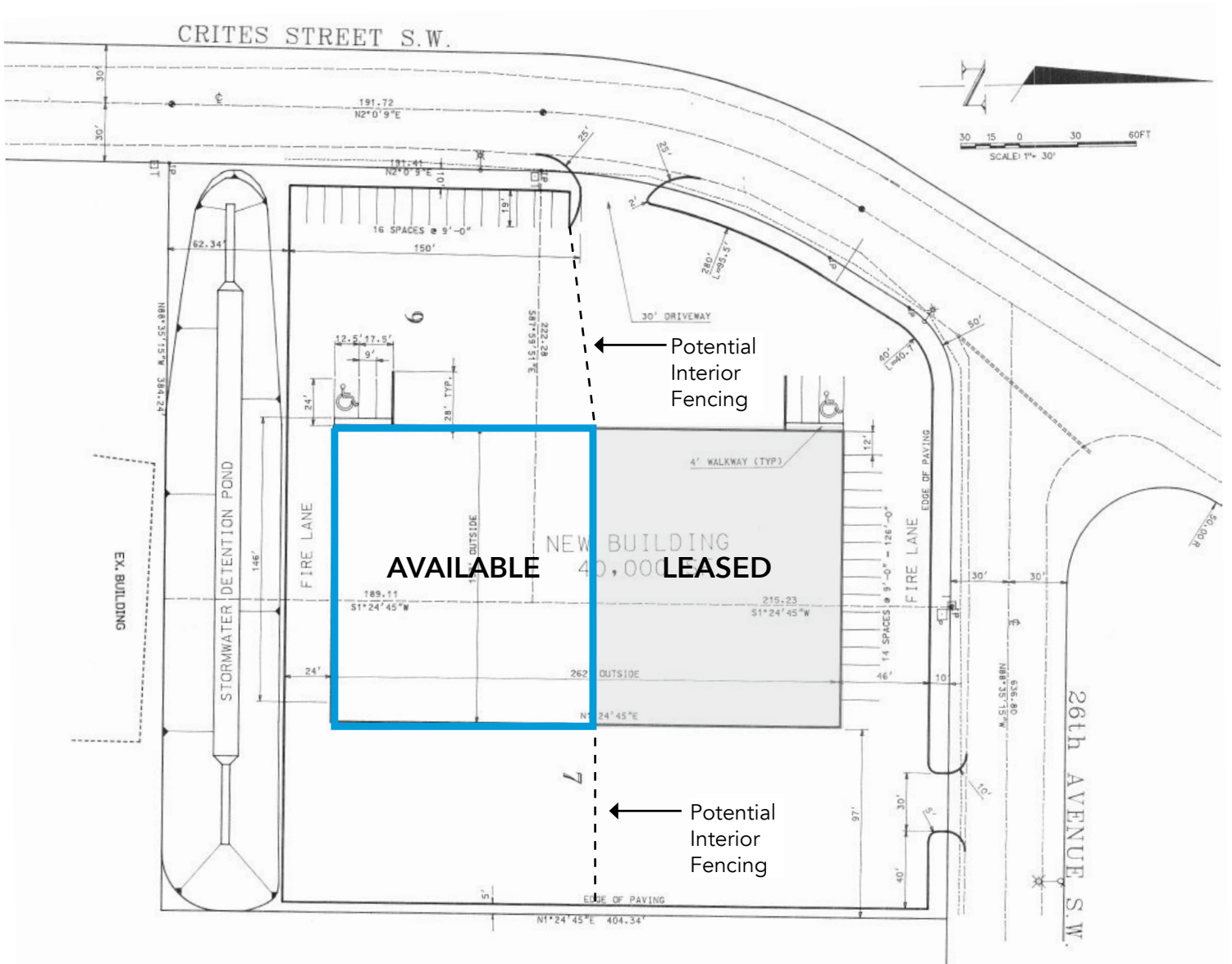
All information furnished regarding property for sale, rental or financing is from sources deemed reliable, but no warranty or representation is made to the accuracy thereof and same is submitted to errors, omissions, change of price, rental or other conditions prior to sale, lease or financing or withdrawal without notice. No liability of any kind is to be imposed on the broker herein.

2670 CRITES ST SW

Sublease | Tumwater

Vanessa Herzog
vherzog@lee-associates.com
253.444.3020

SITE PLAN



2670 CRITES ST SW

Sublease | Tumwater

Vanessa Herzog
vherzog@lee-associates.com
253.444.3020

FLOOR PLANS



Floor Plan

CRITES STREET ACCESS

LEGEND:

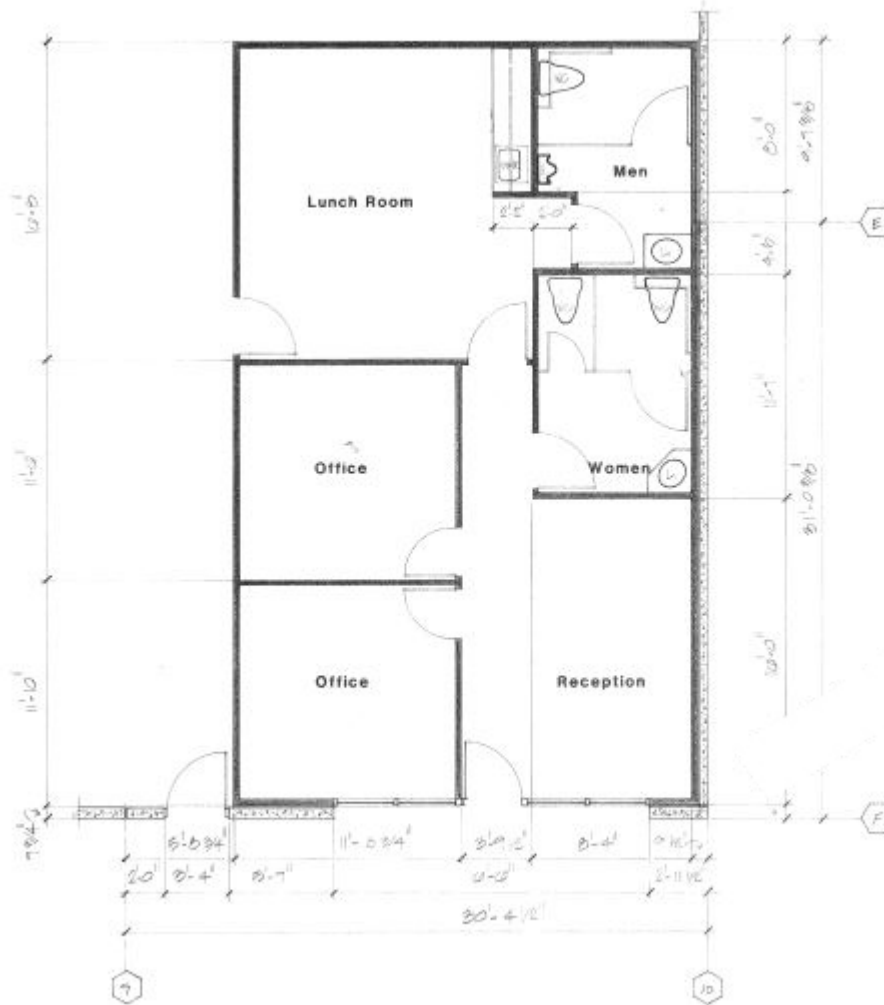
- ▷ Dock High Doors
- ▶ Grade Level Doors

2670 CRITES ST SW

Sublease | Tumwater

Vanessa Herzog
vherzog@lee-associates.com
253.444.3020

FLOOR PLANS



OFFICE FLOOR PLAN

2670 CRITES ST SW

Sublease | Tumwater

**LEE &
ASSOCIATES**
COMMERCIAL REAL ESTATE SERVICES

Vanessa Herzog
vherzog@lee-associates.com
253.444.3020

AERIALS

