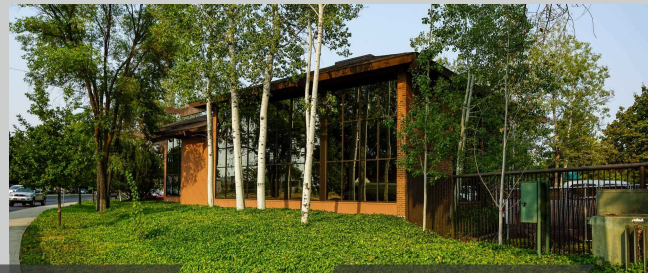
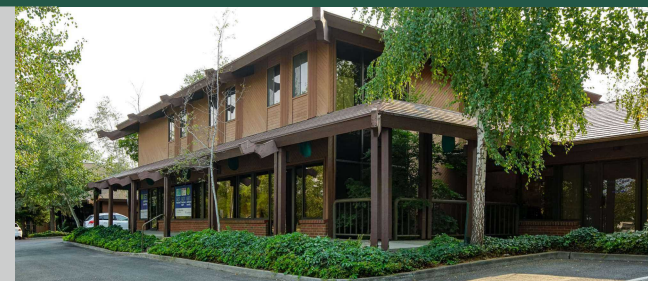




PRIME

LOCATION



OFFICE

SPACE

PROPERTY INFORMATION

Tapio Professional Center is strategically located just off of Interstate 90 between Thor and Freya Street which is the Gateway to the South Hill. Tapio offers a great location for businesses and a convenient location for their employees and customers.

DEMOGRAPHICS

	3 MILES	5 MILES	10 MILES
Total Households	33,308	86,446	192,233
Total Population	82,238	205,041	454,148
Average HH Income	\$55,066	\$56,578	\$56,815

PROPERTY FEATURES

- Strategically Positioned Professional Center Located Between Spokane & Spokane Valley
- Conference Room Located in Blue Flag Building
- Abundant Free Parking
- Easy Ingress & Egress
- On-Site Building Engineer
- Restaurant Space Available
- Traffic Counts: Freya- 12,100 VPD, Thor-12,700 VPD, 2nd- 15,500 VPD, I-90- 99,000 VPD
- Go to <http://www.nscplace.com/> for more info on the new North South Freeway

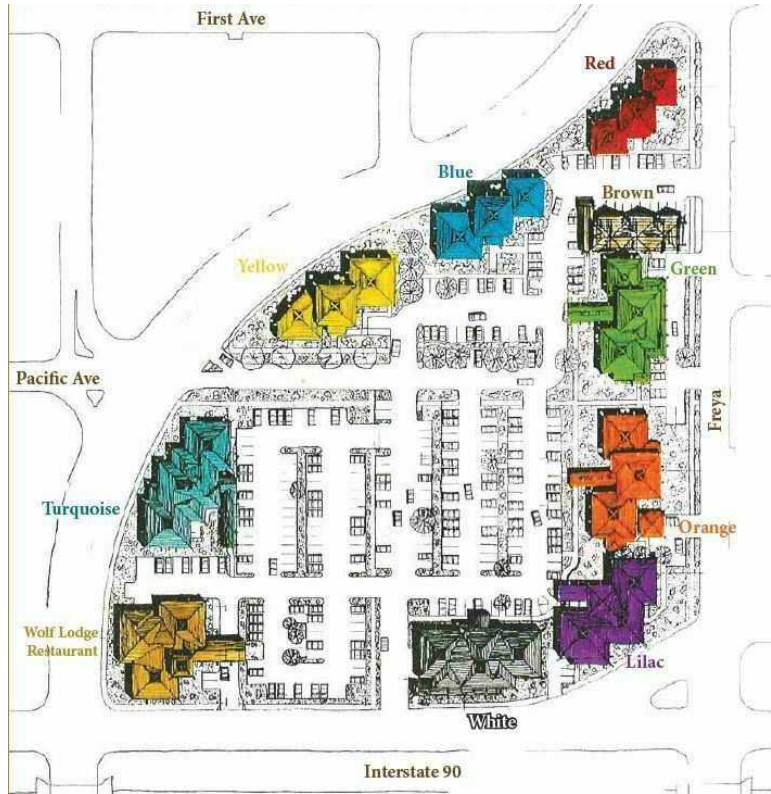
Goodale & Barbieri Company

818 West Riverside #300
Spokane, WA 99201
www.g-b.com

Katie Bohr | Commercial Broker & Leasing Manager
509.344.4906 // katie.bohr@g-b.com

Bob Spooner | Commercial & Leasing Manager
509.999.1959 // bspooner@g-b.com

// LEASE SPACES



AVAILABLE SPACES

SUITE	AVAILABLE	SIZE (SF)	LEASE TYPE	LEASE RATE
Red Building 101B	5/1/2025	542 SF	Modified Gross	\$850 per month
Green Building Suite 111A	Available	731 SF	Modified Gross	\$1,100 per month
Orange Building Suite 115 B	Available	985 SF	Modified Gross	\$1,400 per month
Green Building Suite 112C	Available	1,108 SF	Modified Gross	\$1,750 per month
Lilac Building Suite 216 A	Available	2,354 SF	Modified Gross	\$3,450 per month
Brown Building Suite 209 D	Available	2,466 SF	Modified Gross	\$3,500 per month
Commercial Kitchen	Available	1,400 SF	NNN	\$2,000 per month
Restaurant	Available	7,943 SF	NNN	\$15.00 SF/yr

// PRESENTED BY:

KATIE BOHR

COMMERCIAL BROKER & LEASING MANAGER
509.344.4906
KATIE.BOHR@G-B.COM

BOB SPOONER

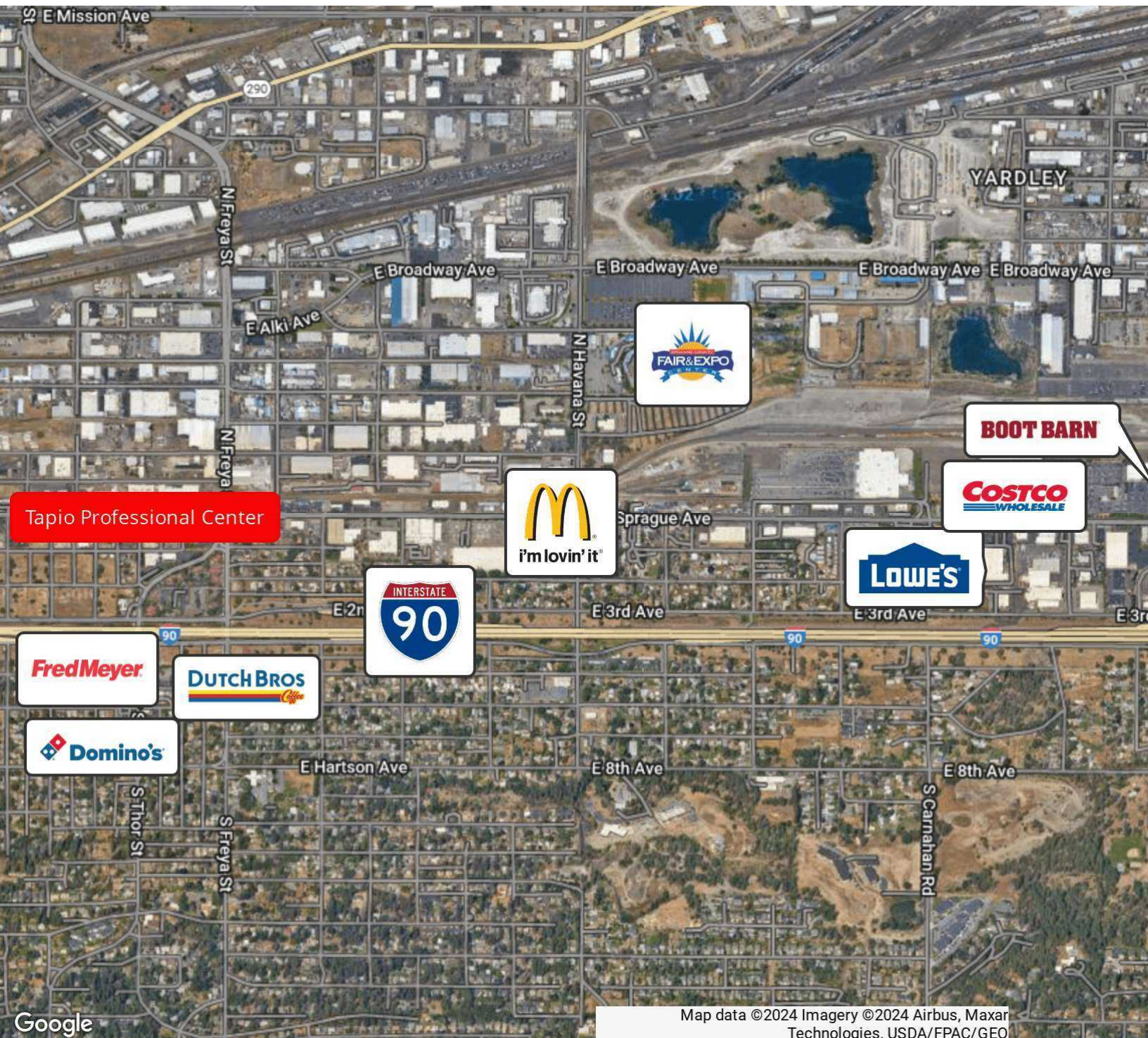
COMMERCIAL & LEASING MANAGER
509.999.1959
BSPOONER@G-B.COM





GOODALE
& BARBIERI

104 S Freya, Spokane, WA 99202
Retailer Map



General Warranty Disclaimer: G&B makes no warranties, representations, or guarantees as to Seller/Owner's supplied information or the Property itself. G&B disclaims all warranties (express and implied) as to the Property and Seller/Owner's statements/information about the Property. Buyer/Lessee shall not rely on Property information supplied by Seller/Owner or G&B. Buyer/Lessee shall conduct its own due diligence to verify any information and the Property's suitability for specific or general purposes. Copyright information: G&B respects the intellectual property of others and its Digital Millennium Copyright Act.

Goodale & Barbieri Company
818 West Riverside #300
Spokane, WA 99201
www.g-b.com

Katie Bohr | Commercial Broker & Leasing Manager
509.344.4906 // katie.bohr@g-b.com
Bob Spooner | Commercial & Leasing Manager
509.999.1959 // bspooner@g-b.com

