

FOR LEASE

6120 Capitol Blvd SE, Suite 2
Tumwater, WA 98501



TUMWATER OFFICE SUITE

Amanda Blackwood | Sean Brennecke

First Western Properties—Tacoma Inc. | 253.472.0404
6402 Tacoma Mall Blvd, Tacoma, WA 98409 | fwp-inc.com

Cresa | 503.351.7788 | cresa.com
1355 NW Everett Street, Suite #100, Portland, OR 97209

6120 CAPITOL BLVD SE is on a well-trafficked arterial road, providing high visibility and easy access for both local customers and those commuting between Olympia and the surrounding areas. Located near major highways like I-5, it's convenient for customers from nearby cities such as Lacey and Olympia to reach your business.

AVAILABLE

1,431 SF CALL BROKERS FOR DETAILS

- Available now – Move-in Ready!
- Open floorplan with three private offices and ADA Restroom
- Ground floor suite with direct access
- High traffic corridor
- Excellent visibility with frontage on Capitol Blvd SE
- Building signage available
- Close proximity to I-5 and national retailers such as Costco, Walmart, Home Depot, Albertsons, and Walgreens
- Limited office space available
- Parking Ratio - 5.35:1000

Zoning – CBC (Capitol Boulevard Community Zone District)
 Tumwater CBC Zoning Land Use ([Click Here](#))



Population



Average HH Income



Daytime Population

Regis - 2024

	Population	Average HH Income	Daytime Population
Mile 1	6,478	\$93,515	9,882
Mile 3	47,009	\$126,813	41,999
Mile 5	123,888	\$115,624	103,178

NEARBY TENANTS



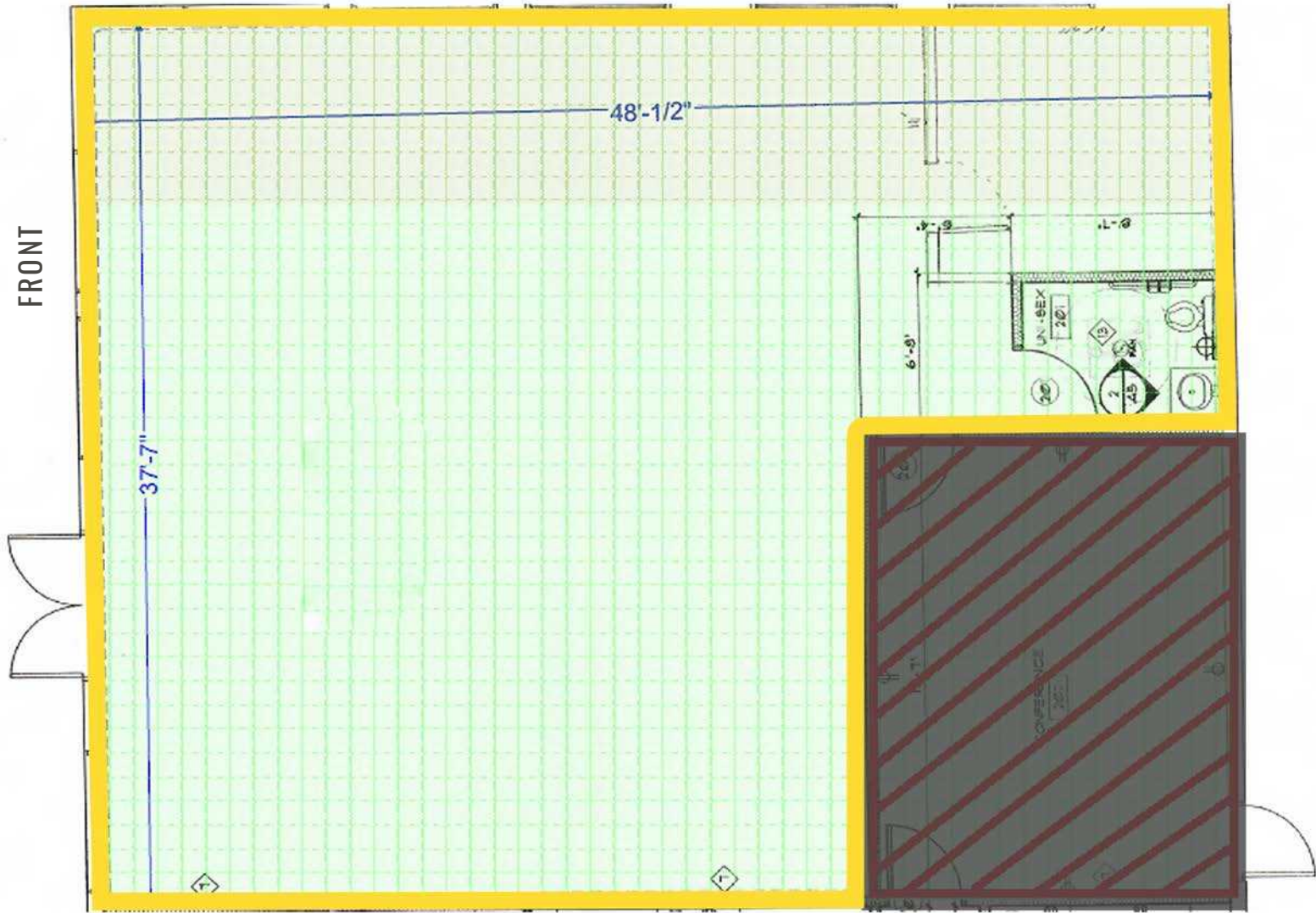
EXTERIOR PHOTOS



INTERIOR PHOTOS



FLOOR PLAN



» EXISTING BUILDOUT INCLUDES:

3 PRIVATE OFFICES, 1 RESTROOM, OPEN FLOORPLAN WITH DIRECT ACCESS TO SUITE

LOCATION DETAILS



Moments away from major freeways



Located near major tenants



16,424 CPD Capitol Blvd SE



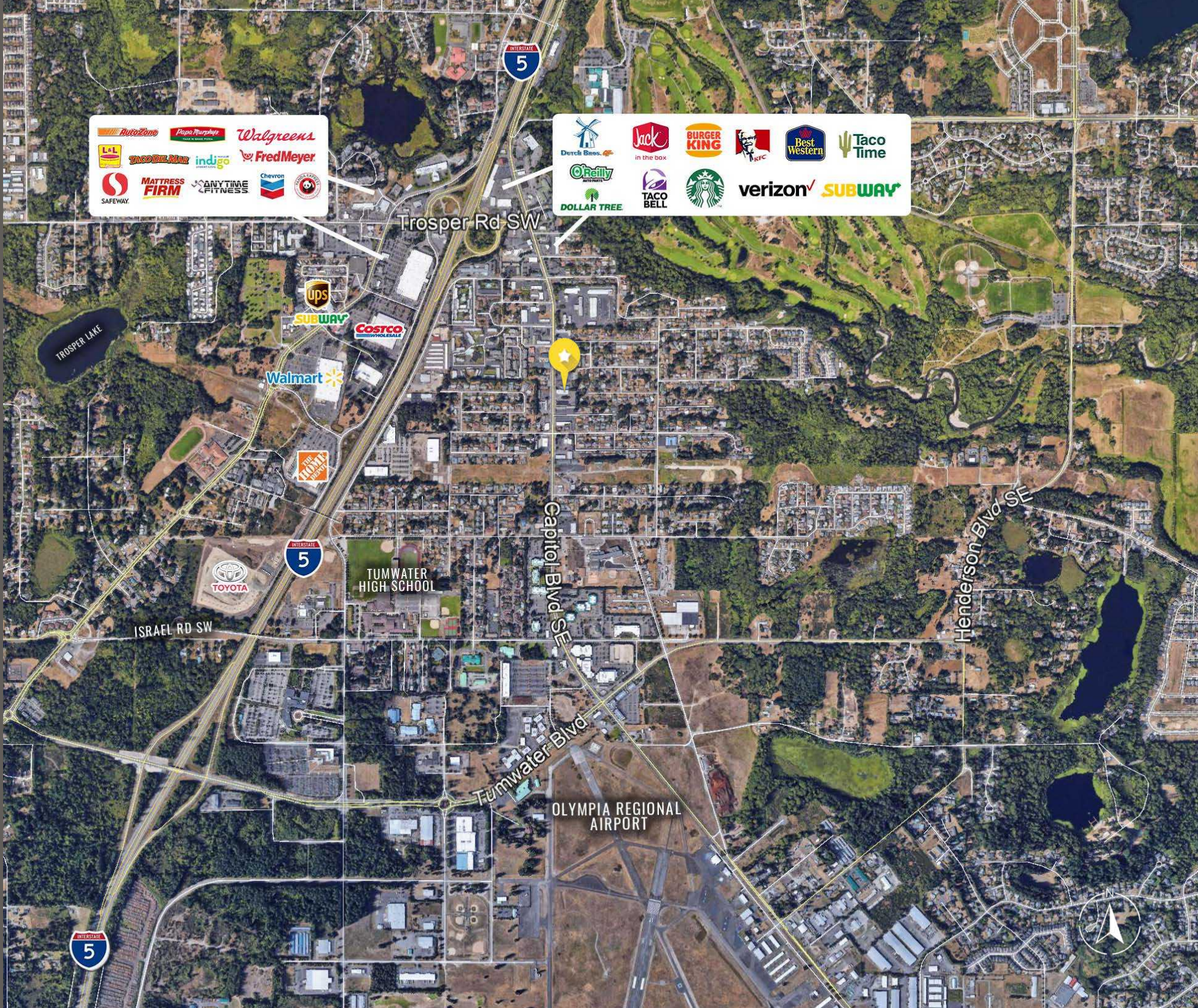
87,736 CPD Interstate 5



LOCATION AERIAL

Duane's, Paper Direct, Walgreens, L+L, TACO BELL, indigo, Fred Meyer, Safeway, MATTRESS FIRM, ANYTIME FITNESS, Chevron, and a red circular logo.

Dutch Bros, Jack in the Box, BURGER KING, KFC, Best Western, Taco Time, O'Reilly Auto Parts, STARBUCKS, verizon, and SUBWAY.



TACOMA | KIRKLAND | PORTLAND | SEATTLE

RELATIONSHIP FOCUSED.
RESULTS DRIVEN.



AMANDA BLACKWOOD

📞 425.531.3345

✉️ ablackwood@firstwesternproperties.com



SEAN BRENNECKE

📞 503.351.7788

✉️ sbrennecke@cresa.com

Cresa | 503.351.7788 | cresa.com

1355 NW Everett Street, Suite #100, Portland, OR 97209

First Western Properties—Tacoma Inc. | 253.472.0404
6402 Tacoma Mall Blvd, Tacoma, WA 98409 | fwp-inc.com

© First Western Properties, Inc. DISCLAIMER: The above information has been secured from sources believed to be reliable, however, no representations are made to its accuracy. Prospective tenants or buyers should consult their professional advisors and conduct their own independent investigation. Properties are subject to change in price and/or availability without notice.