

# Northway Square East

2150 N 107TH STREET  
SEATTLE WA

MEDICAL OFFICE &  
OFFICE SPACE FOR LEASE





# PROPERTY FEATURES



Prominent building exposure to Interstate 5



Close proximity to Northgate Transit Center and Light Rail Station



Ample surface parking



Secured building storage available and Newly renovated common areas



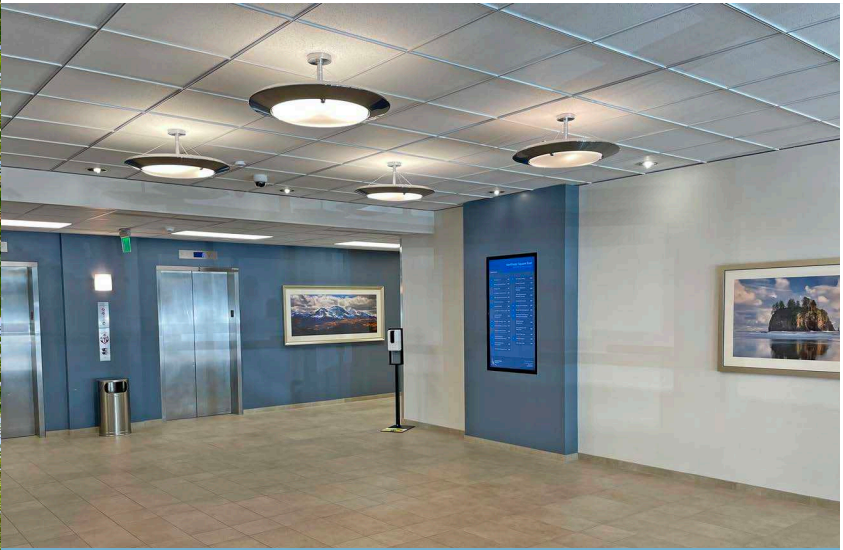
Close proximity to UW Medicine/Northwest Hospital



Flexible configuration and sizes can accommodate both office and medical uses

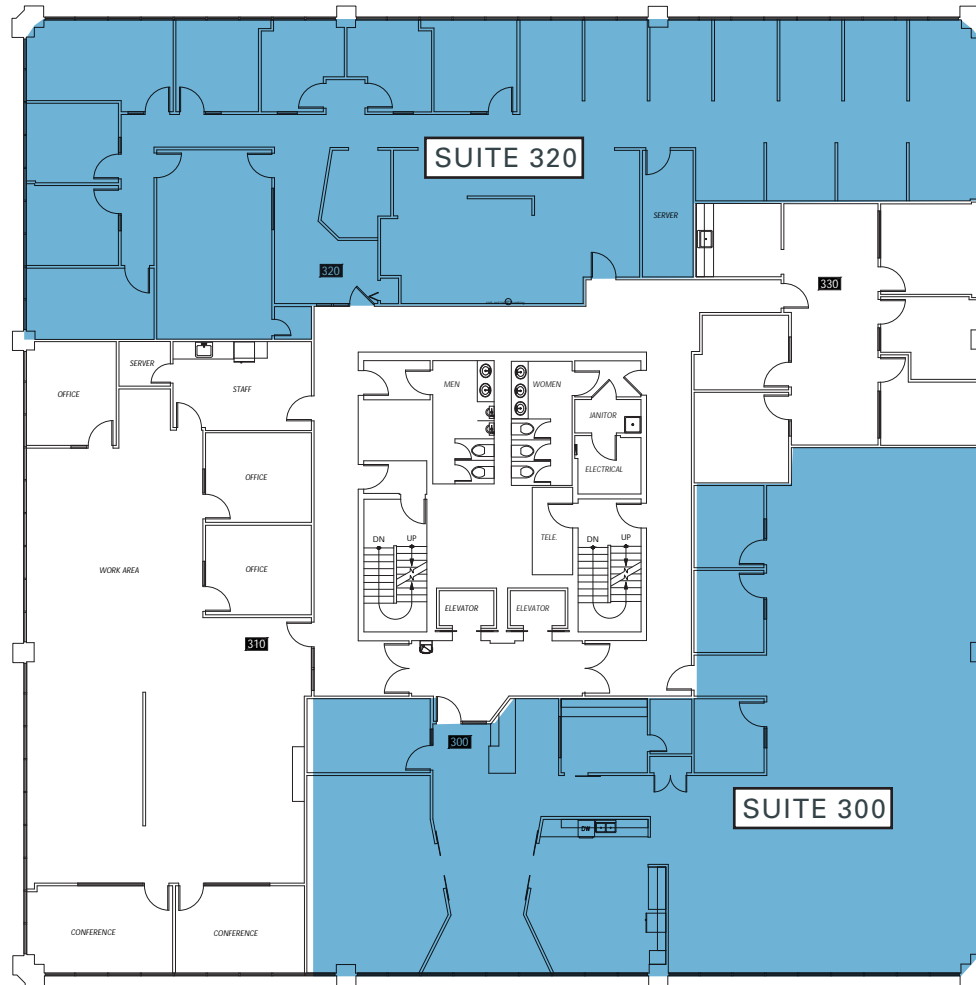
# FLOOR PLANS / AVAILABILITY

SUITE	SIZE (SF)	AVAILABILITY	SPACE PLAN LINK	CLICK FOR VIRTUAL TOUR
90	1,000 - 7,017 SF	Now		
210	695 SF	Now		
300	4,483 SF	Now		
320	4,393 SF	5/1/2025		
500	3,512 SF	Now		
510	1,914 SF	Now		
515	584 SF	Now		

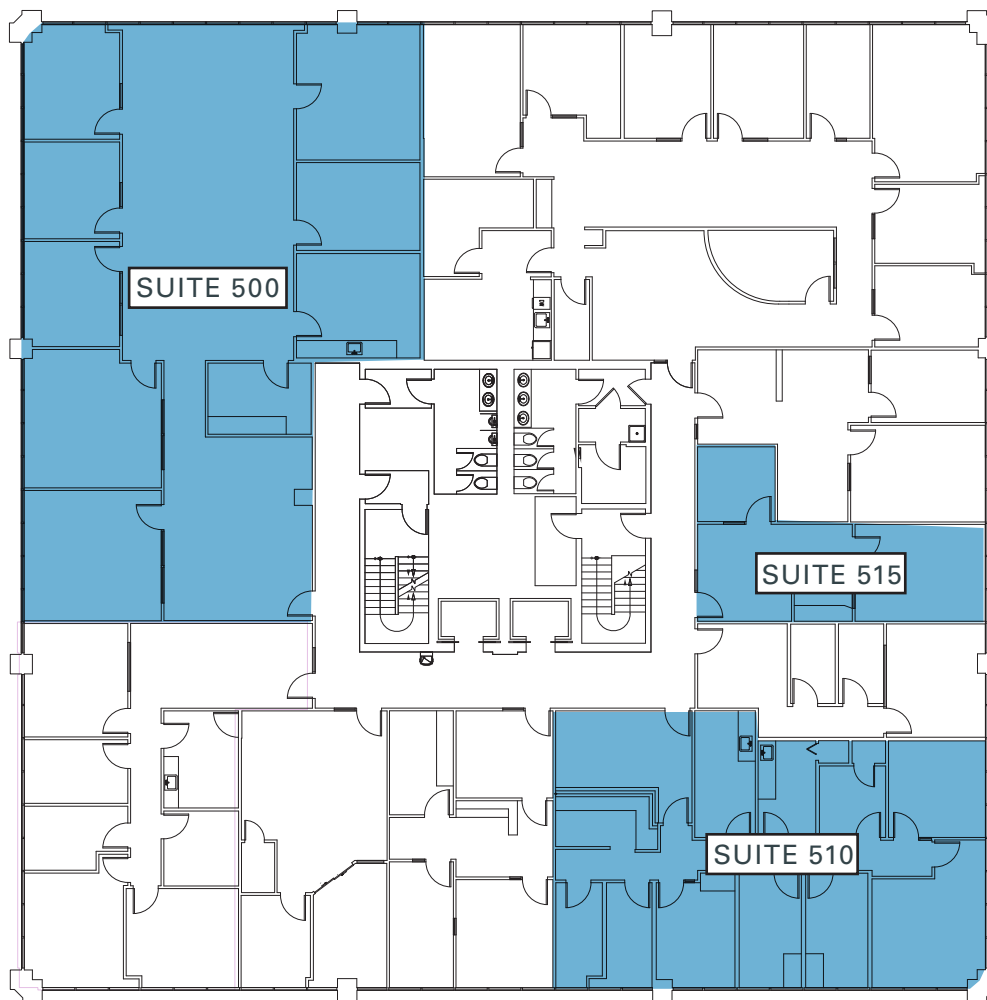




SUITE	SIZE (SF)	AVAILABILITY
300	4,483 SF	Now
320	4,393 SF	5/1/2025
Total	8,876 SF	



SUITE	SIZE (SF)	AVAILABILITY
500	3,512 SF	Now
510	1,914 SF	Now
515	584 SF	Now
Total	6,010 SF	







## FOR MORE INFORMATION, PLEASE CONTACT:

**JOHN BAUER**  
Senior Vice President  
+1 425 462 6906  
[john.bauer@cbre.com](mailto:john.bauer@cbre.com)

**MARCUS YAMAMOTO**  
Senior Vice President  
+1 206 292 6062  
[marcus.yamamoto@cbre.com](mailto:marcus.yamamoto@cbre.com)

**KATIE SMITH**  
Senior Associate  
+1 206 292 6012  
[katie.m.smith@cbre.com](mailto:katie.m.smith@cbre.com)

© 2025 CBRE, Inc. All rights reserved. This information has been obtained from sources believed reliable, but has not been verified for accuracy or completeness. You should conduct a careful, independent investigation of the property and verify all information. Any reliance on this information is solely at your own risk. CBRE and the CBRE logo are service marks of CBRE, Inc. All other marks displayed on this document are the property of their respective owners, and the use of such logos does not imply any affiliation with or endorsement of CBRE. Photos herein are the property of their respective owners. Use of these images without the express written consent of the owner is prohibited.



HEALTHCARE  
REALTY

**CBRE**