

3009 PACIFIC AVE

OLYMPIA, WA

Newly updated, highly visible office suite on Pacific Avenue across from Thurston County Atrium offices

Efficient floorplan includes reception, workstation, three private offices, break/conference room, copy area, storage, and common area restrooms

Fully serviced, excluding in-suite janitorial, telephone, and internet

Shared parking

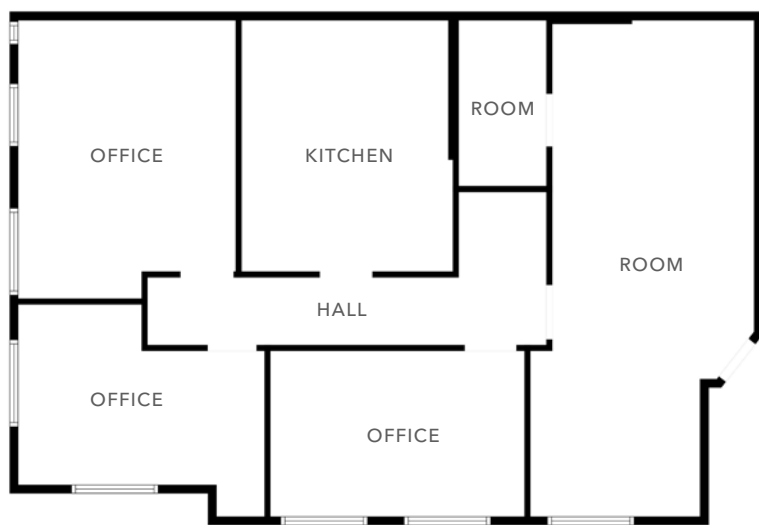
Very accessible to I-5

\$25/SF, fully service

AMY HARDING

360.705.1377

amy.harding@kidder.com



1,789 SF

SUITE 100

NOW

AVAILABLE

KIDDER.COM

This information supplied herein is from sources we deem reliable. It is provided without any representation, warranty, or guarantee, expressed or implied as to its accuracy. Prospective Buyer or Tenant should conduct an independent investigation and verification of all matters deemed to be material, including, but not limited to, statements of income and expenses. Consult your attorney, accountant, or other professional advisor.



