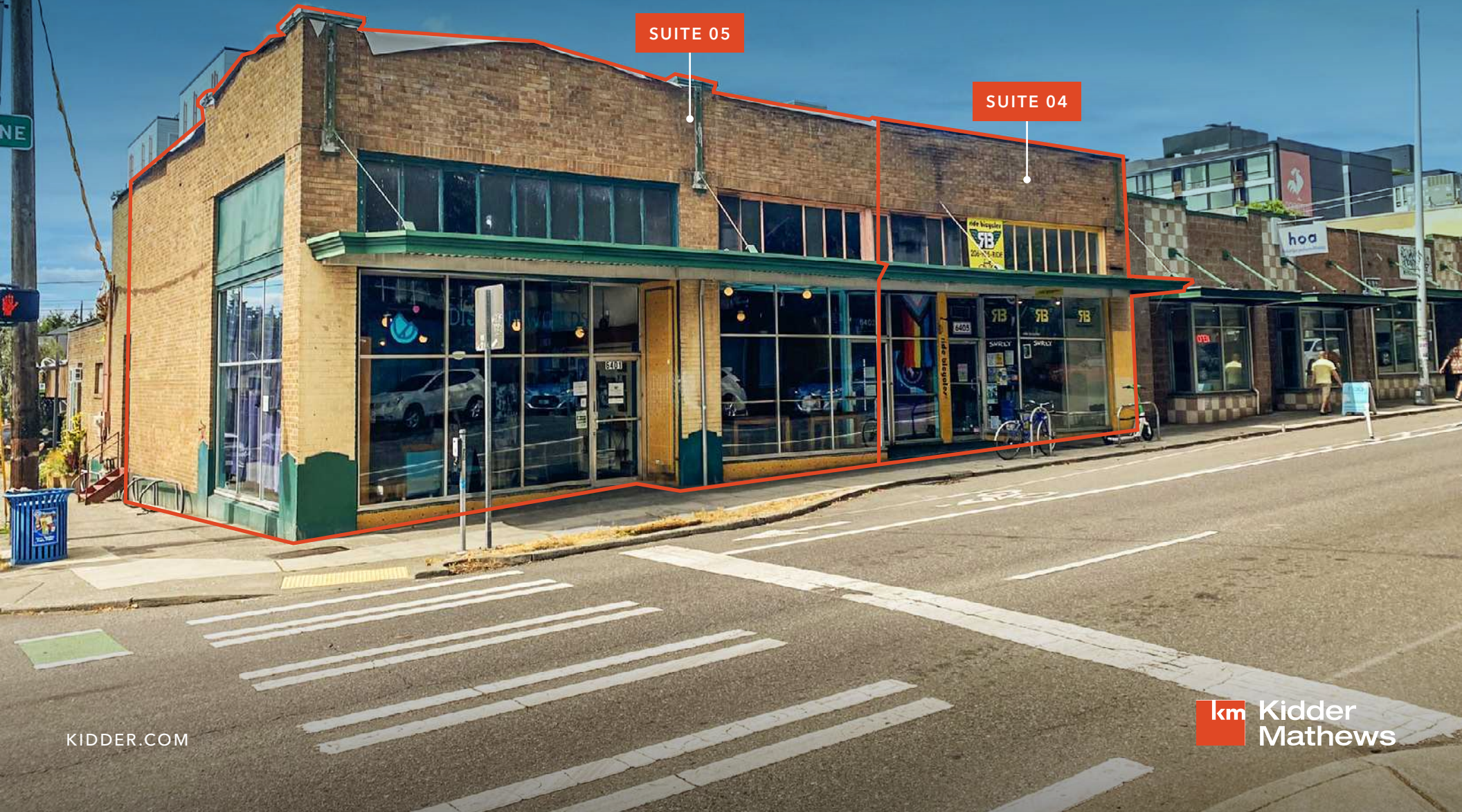


FOR LEASE

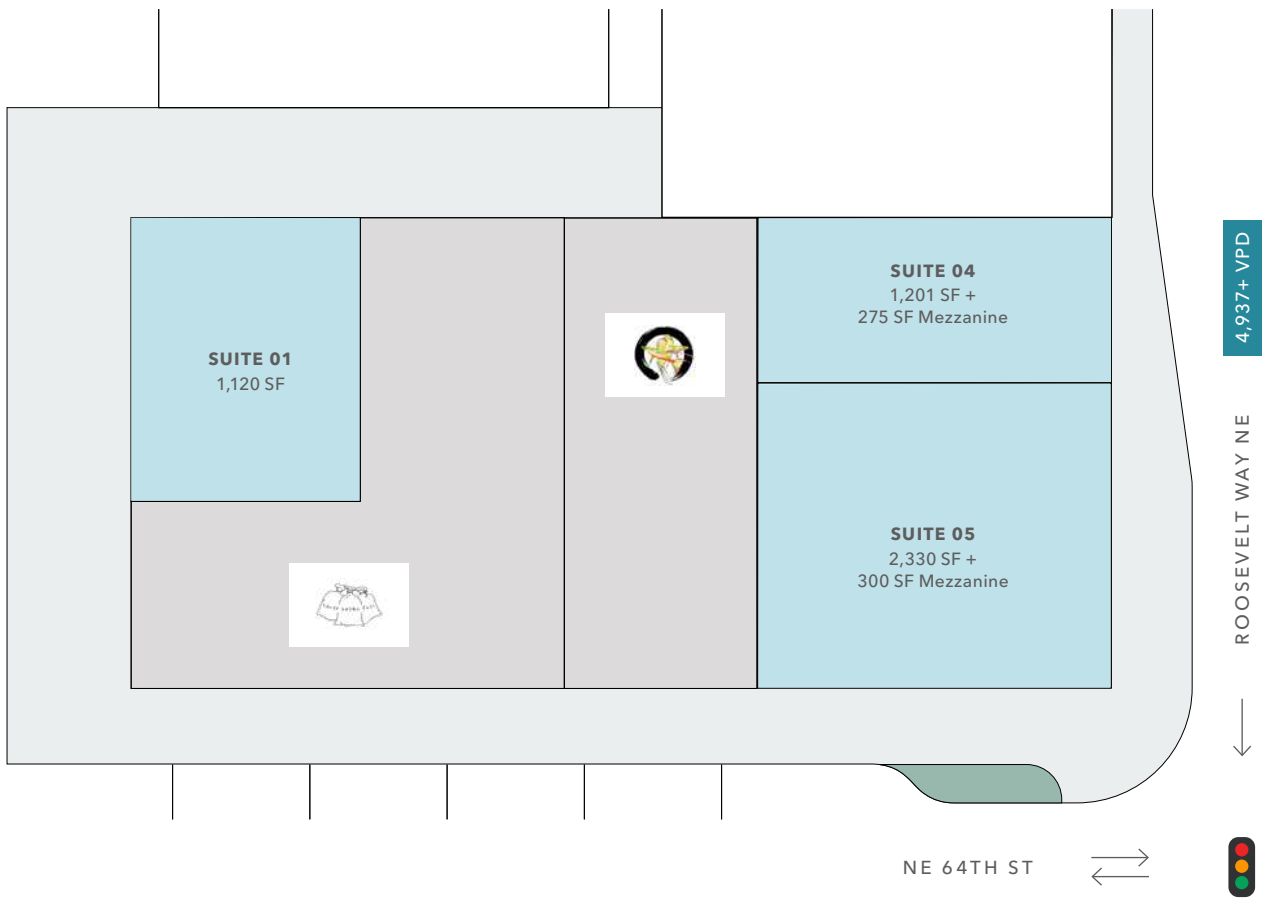
# 6401 ROOSEVELT

6401 ROOSEVELT WAY NE, SEATTLE, WA 98115

*High-visibility retail spaces for  
lease across from Whole Foods  
in the Roosevelt District*



# SITE PLAN

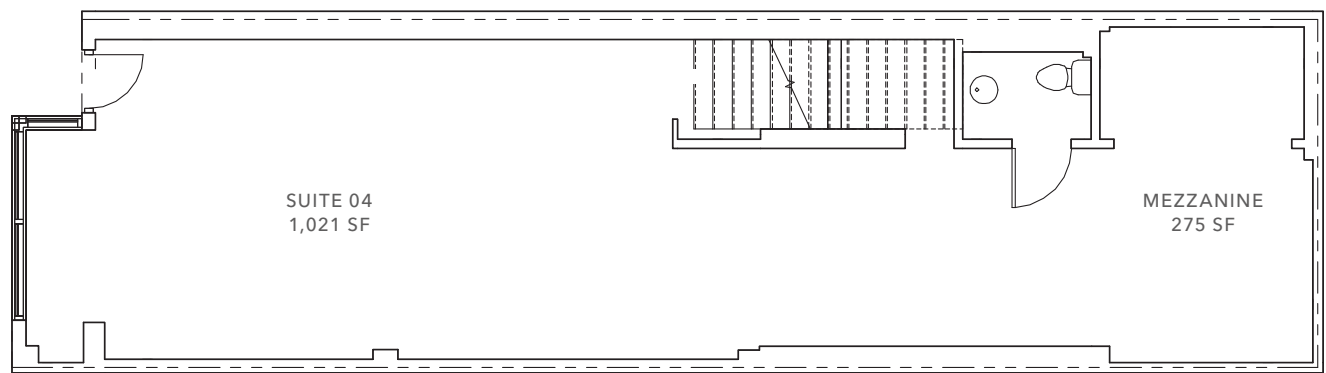


Unit	Tenant	SF
02	Three Sacks Full	1,908
03	Aquarium Zen	1,350
01	Available	1,120
04	Available	1,021 + 275 Mezz
05	Available	2,310 + 300 Mezz





# SUITE 04 FLOOR PLAN



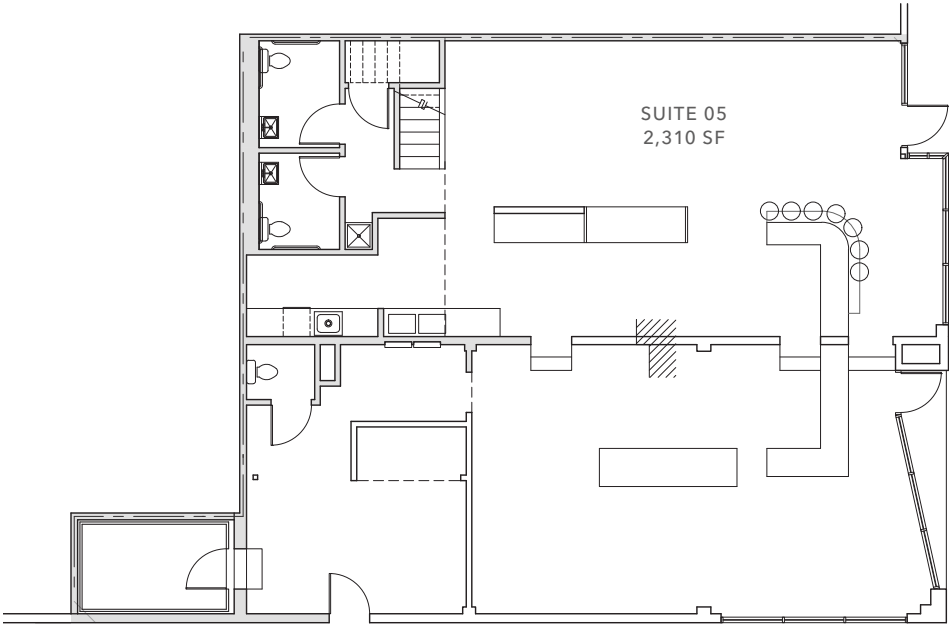
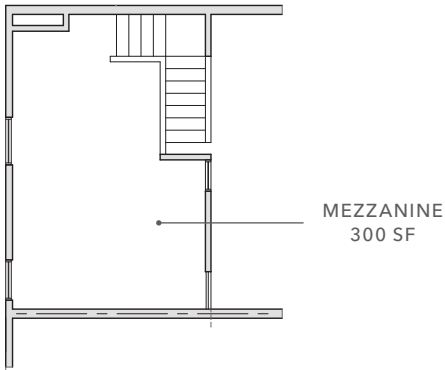
1,021  
SUITE SF

275  
MEZZANINE SF

NOW  
AVAILABLE



# SUITE 05 FLOOR PLAN



2,310  
SUITE SF

300  
MEZZANINE SF

NOW  
AVAILABLE



# APPROVED & PROPOSED RESIDENTIAL PROJECTS

	Address	Status	Residential Units
01	6800 Roosevelt Way NE	Approved	79
02	800 NE 67th St	Approved	260
03	836 NE 67th St	Proposed	76
04	6616 8th Ave NE	Approved	20
05	802 66th St	Proposed	250
06	831 NE 66th St	Proposed	40
07	6404 9th Ave NE	Proposed	83
08	6516 12th Ave NE	Proposed	206
09	6515 Brooklyn Ave NE	Approved	54
10	1222 NE 65th St	Proposed	55
11	6505 15th Ave NE	Approved	220
12	1319 NE 65th St	Approved	41



DEMOGRAPHICS

	1 Mile	3 Miles	5 Miles
ESTIMATED 2024 POPULATION	47,598	261,750	559,657
PROJECTED 2029 POPULATION	53,802	276,226	589,390
ESTIMATED 2024 HOUSEHOLDS	22,392	118,818	280,531
ESTIMATED 2024 AVERAGE HOUSEHOLD INCOME	\$168,330	\$200,028	\$196,098

← Green Lake



6401  
ROOSEVELT



ROOSEVELT LIGHT  
RAIL STATION

ROOSEVELT  
HIGH SCHOOL

ROOSEVELT SQUARE





# 6401 ROOSEVELT

DOWNTOWN  
SEATTLE



SUBJECT  
PROPERTY

*For more information, contact*

**JOHN CHELICO**

Senior Vice President

206.398.2261

[john.chelico@kidder.com](mailto:john.chelico@kidder.com)

**KIDDER.COM**

This information supplied herein is from sources we deem reliable. It is provided without any representation, warranty, or guarantee, expressed or implied as to its accuracy. Prospective Buyer or Tenant should conduct an independent investigation and verification of all matters deemed to be material, including, but not limited to, statements of income and expenses. Consult your attorney, accountant, or other professional advisor.

**km** Kidder  
Mathews