

OFFICE FOR LEASE

CARLTON CENTER

1551 BROADWAY, TACOMA, WASHINGTON

LEE & ASSOCIATES
COMMERCIAL REAL ESTATE SERVICES

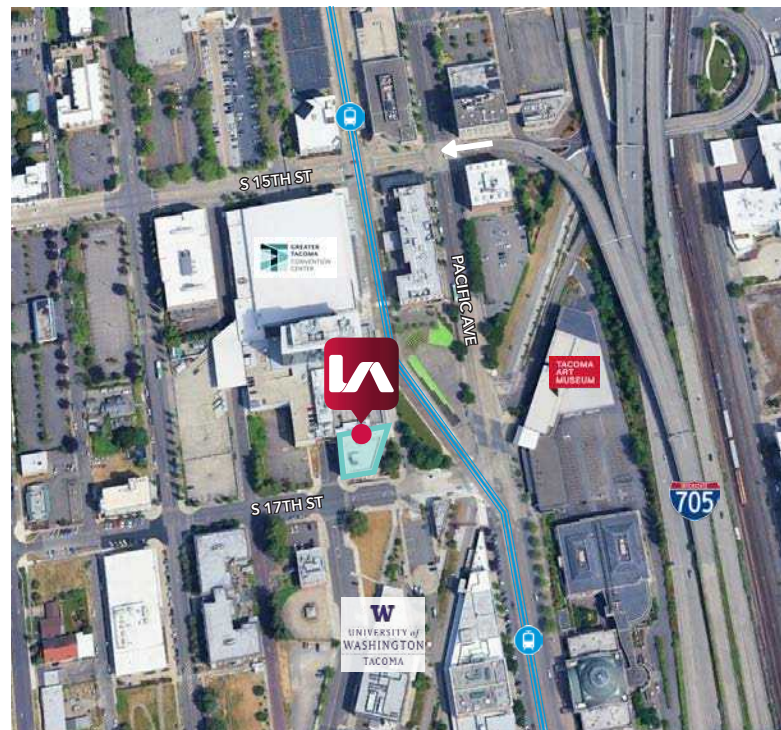


LISTING INFORMATION

TOTAL AVAILABLE:	24,212 SF, divisible to $\pm 1,500$ SF
SUITE 102:	2,325 SF (grade level on Commerce St)
SUITE 200:	7,235 SF (grade level on Broadway)
SUITE 300:	7,276 SF
SUITE 400:	7,376 SF
LEASE RATE:	\$22.00 SF/Yr Full Service

COMMENTS

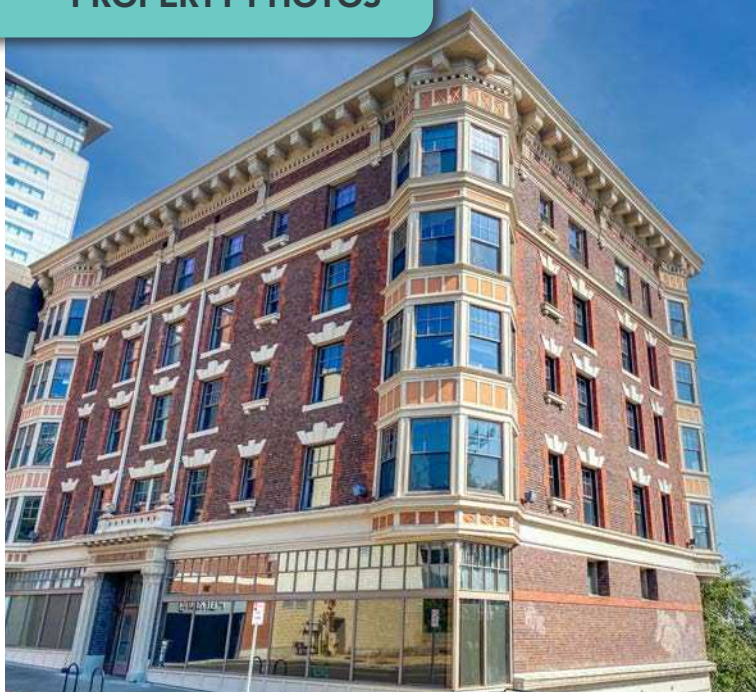
- » Premier location nestled between the heart of downtown Tacoma and the University of Washington Tacoma campus
- » Adjacent to the Tacoma Convention Center.
- » Convenient access to light rail, freeways, and parking
- » Beautiful bright space with a modern industrial chic vibe
- » Exposed brick and beam construction
- » Divisible in multiple configurations
- » Flexible terms



CARLTON CENTER

1551 BROADWAY, TACOMA, WA 98402

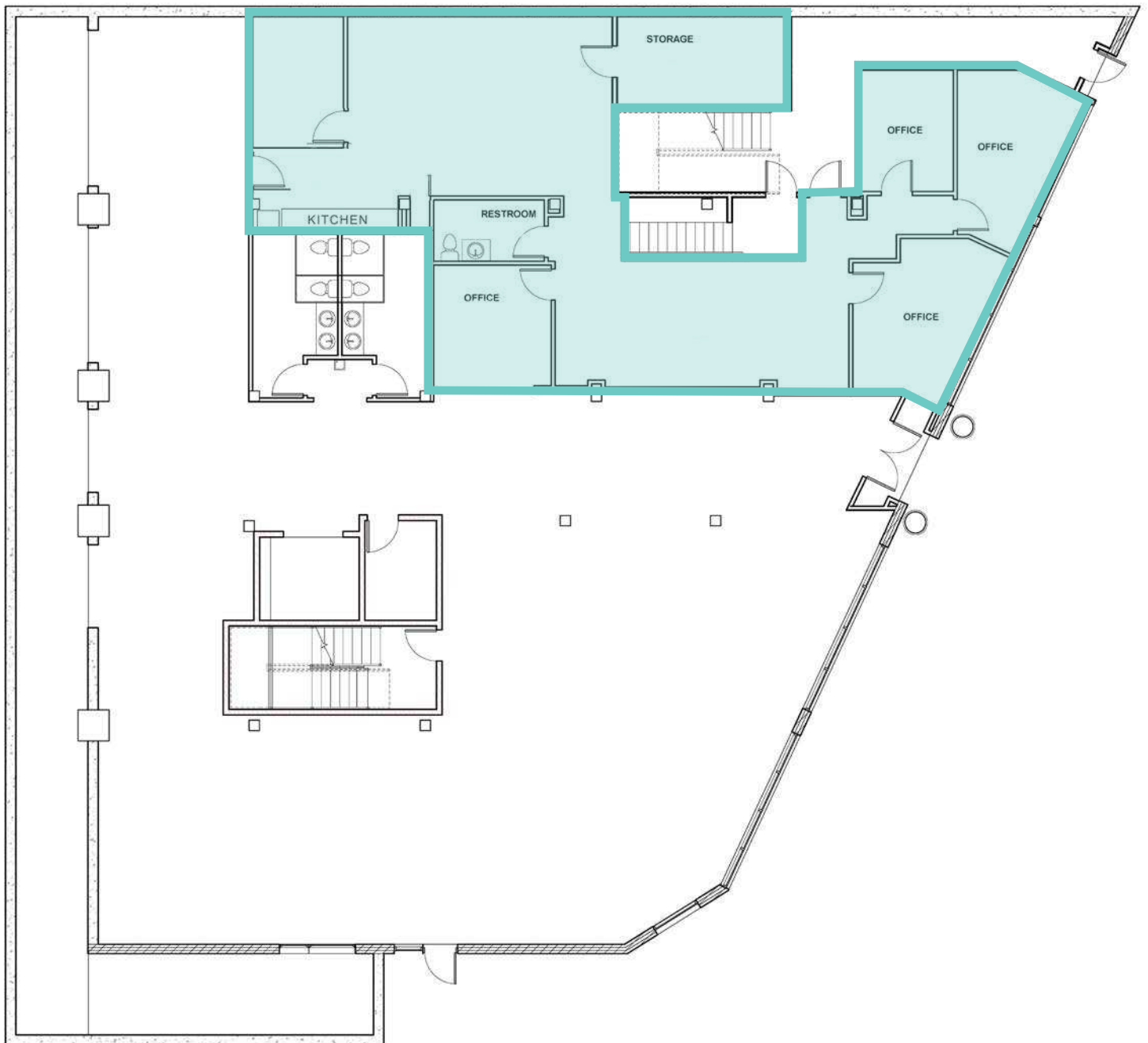
PROPERTY PHOTOS



CARLTON CENTER

1551 BROADWAY, TACOMA, WA 98402

SUITE 102 | 2,325 SF



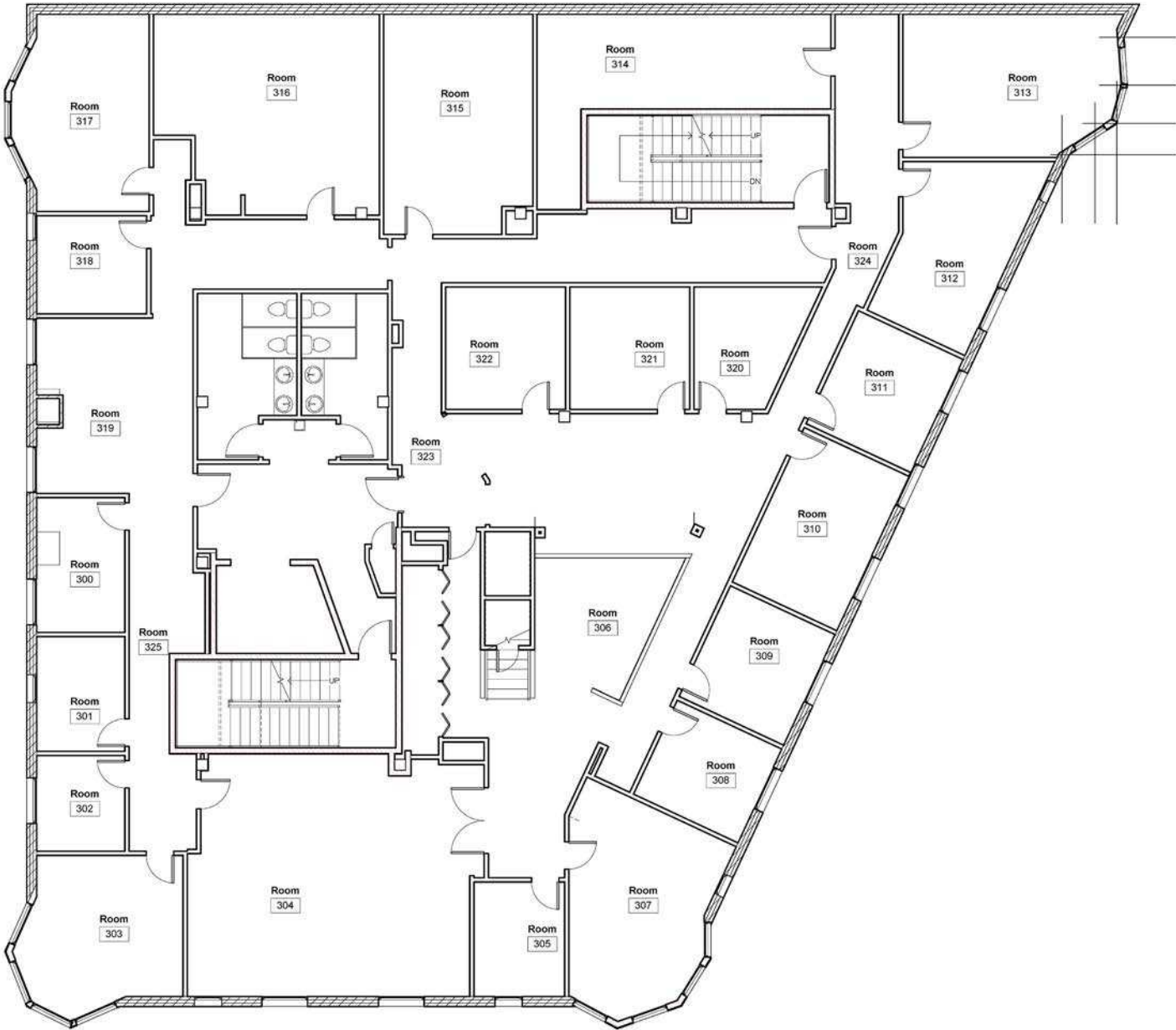
CARLTON CENTER

1551 BROADWAY, TACOMA, WA 98402

SUITE 200 | 7,235 SF



SUITE 300 | 7,276 SF



CARLTON CENTER

1551 BROADWAY, TACOMA, WA 98402

SUITE 400 | 7,376 SF



CARLTON CENTER

1551 BROADWAY, TACOMA, WA 98402

SURROUNDING AREA



CONTACT

John Bauder, CCIM

jbauder@lee-associates.com

D 253-238-0043

Harrison Laird

hlaird@lee-associates.com

D 253-238-0044

All information furnished regarding property for sale, rental or financing is from sources deemed reliable, but no warranty or representation is made to the accuracy thereof and same is submitted to errors, omissions, change of price, rental or other conditions prior to sale, lease or financing or withdrawal without notice. No liability of any kind is to be imposed on the broker herein.