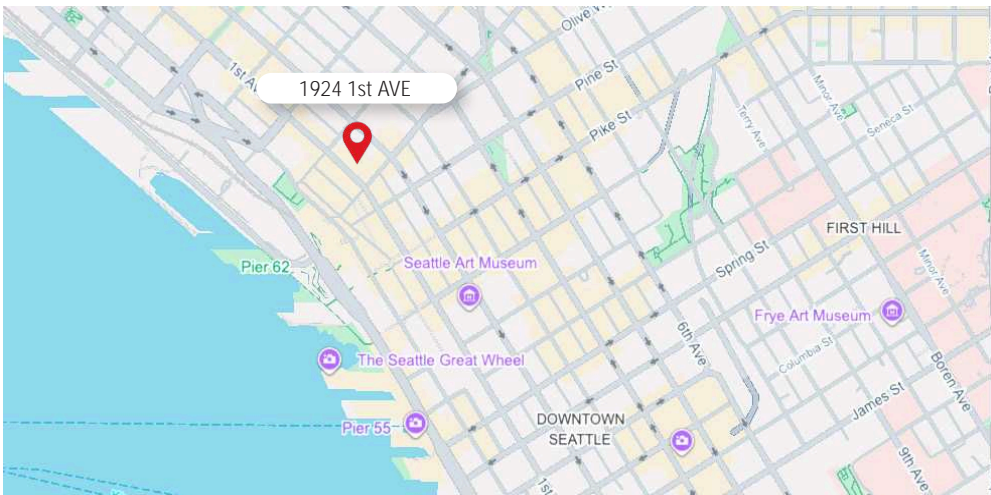
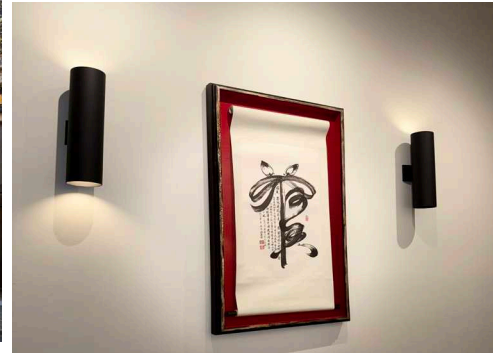


# FOR LEASE

## STUNNING FIRST AVENUE OFFICE

1924 1ST AVE, SUITE 450 | SEATTLE, 98101



## PROPERTY FEATURES

- Penthouse-level executive office suite
- 2,097 RSF over two story space, including two large terraces
- Sophisticated, boutique office building
- Across the street from Pike Place Market
- Walker's Paradise - 99 Walk Score
- Open front office, plus 4 private office suites, recently renovated
- Private kitchenette
- \$23/SF/YR + \$12.27 NNN



**ANDY  
RANDLES**

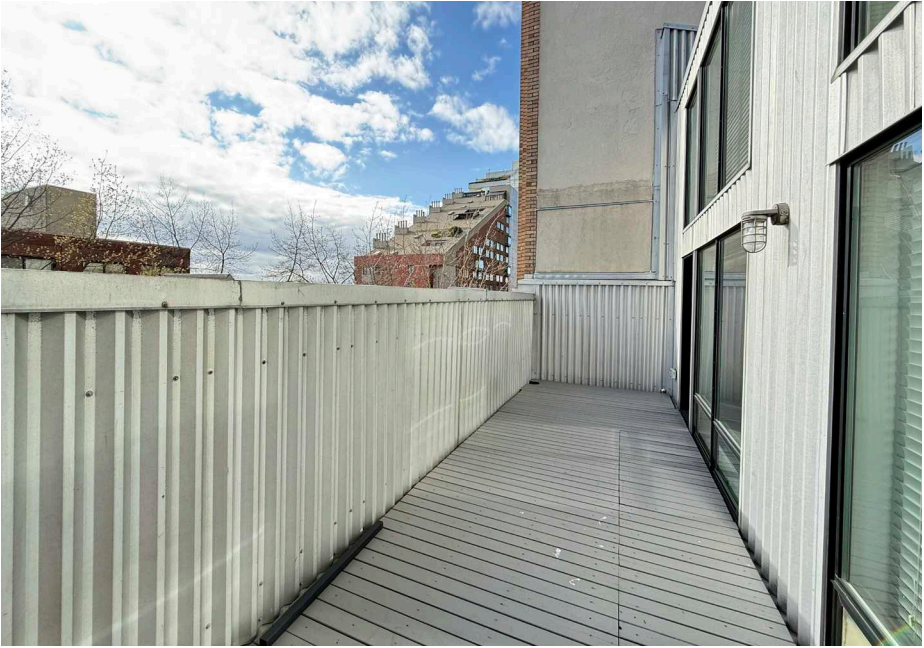
206.405.0090  
andy@ewingandclark.com

**TOM  
GRAFF**

206.295.1445  
tomgraff@ewingandclark.com

# PHOTOS

1924 1ST AVE, SUITE 450 | SEATTLE, 98101



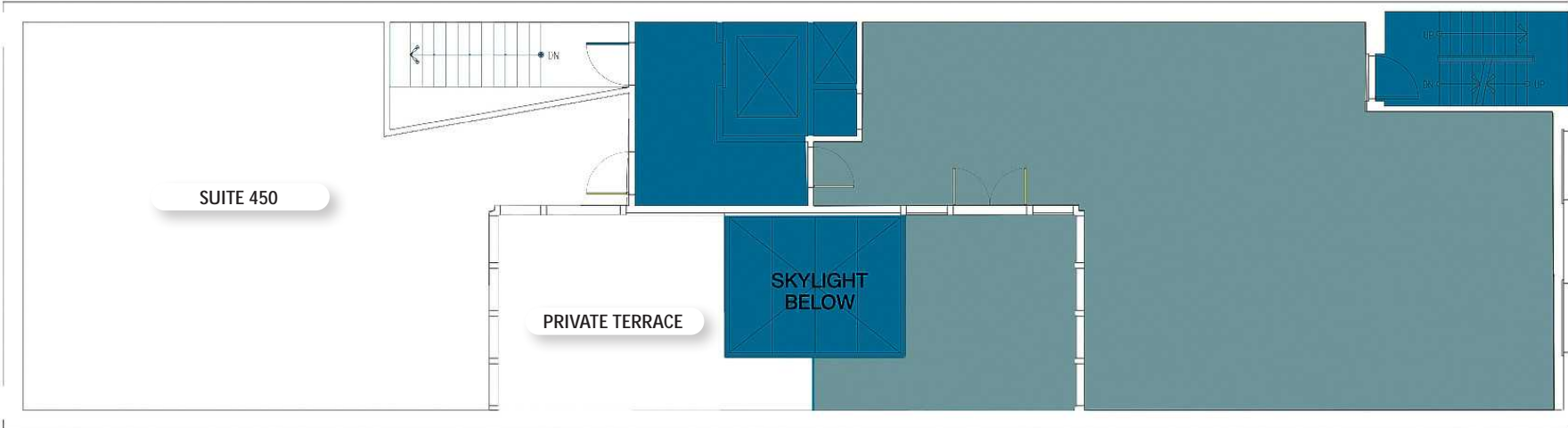
**ANDY RANGLES** | 206.405.0090  
andy@ewingandclark.com

**TOM GRAFF** | 206.295.1445  
tomgraff@ewingandclark.com

# FLOOR PLAN

1924 1ST AVE, SUITE 450 | SEATTLE, 98101

## 4TH FLOOR



## 5TH FLOOR

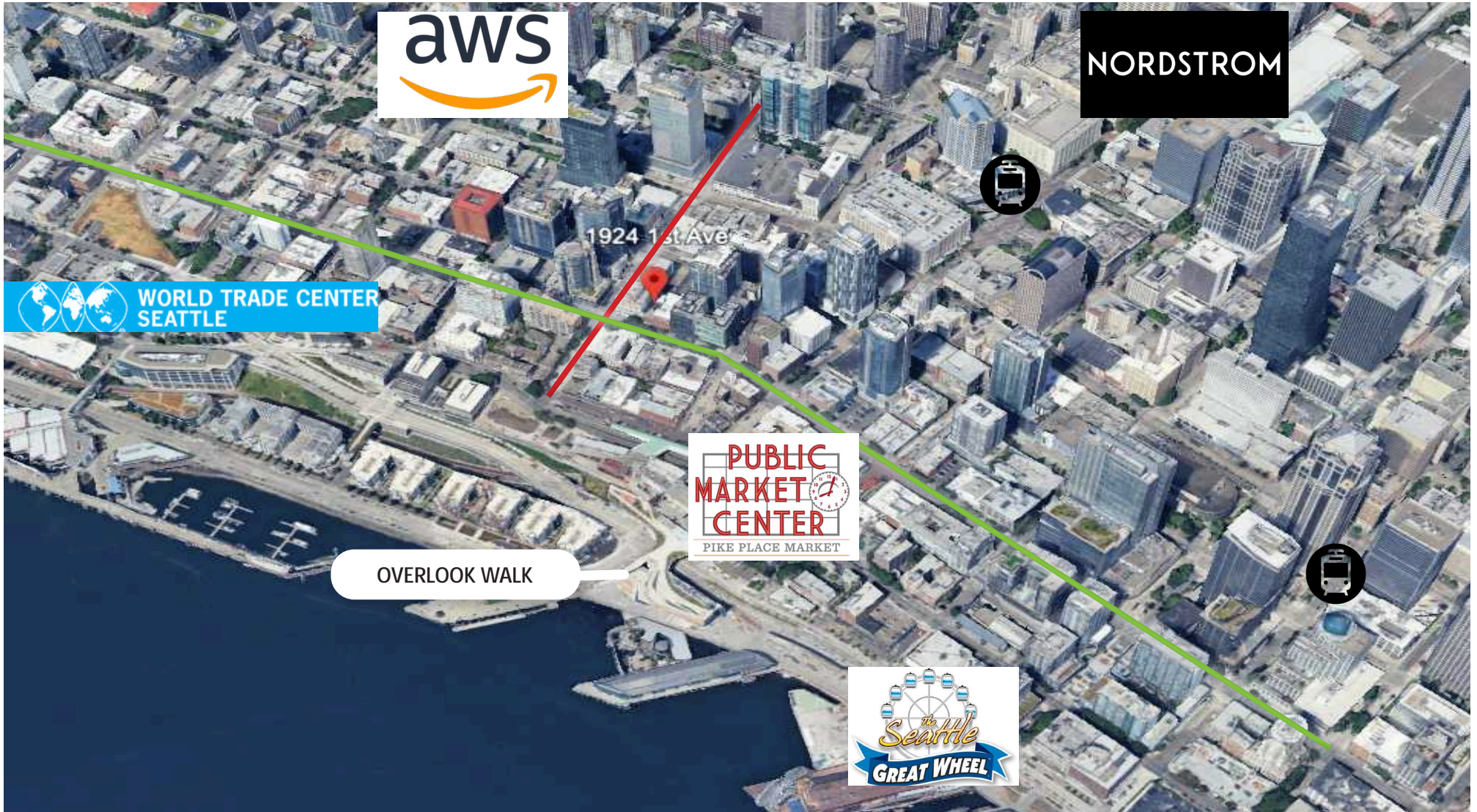


**ANDY RANGLES** | 206.405.0090  
andy@ewingandclark.com

**TOM GRAFF** | 206.295.1445  
tomgraff@ewingandclark.com

# AERIAL MAP

1924 1st AVE, SUITE 450 | SEATTLE, 98101



**ANDY RANGLES** | 206.405.0090  
andy@ewingandclark.com

**TOM GRAFF** | 206.295.1445  
tomgraff@ewingandclark.com