

FOR LEASE
RETAIL/RESTAURANT SPACE
ARBOR BLOCKS

300 8th Avenue North, Suite 108, Seattle, WA 98109

For more information please contact:

LAURA MILLER
laura@gibraltarusa.com
206.351.3573



300 8TH AVENUE NORTH, SUITE 108, SEATTLE, WA 98109

ARBOR BLOCKS



PROPERTY HIGHLIGHTS

- Rare vacancy in the heart of South Lake Union, located at the base of Arbor Blocks, home to the 2-tower, 384,000 sq ft FACEBOOK Campus
- Arbor Blocks campus features a tree-lined shared street, prioritized for cyclists and pedestrians, making for an incredibly friendly traffic flow
- 2nd generation space features large storefront windows, high ceilings, ADA restroom, HVAC, venting for type 1 hood
- 27 public parking stalls (validation program available); monthly garage parking \$300/stall
- Ideal for retail, fitness, salon, cafe
- 1,381 SF
- Rental Rate \$38/SF/YR plus est. 2024 NNN (\$14.03) = \$5,987.79 per month



89

TRANSIT SCORE



97

WALK SCORE



83

BIKE SCORE



34,605

TOTAL POPULATION



24,610

TOTAL HOUSEHOLDS



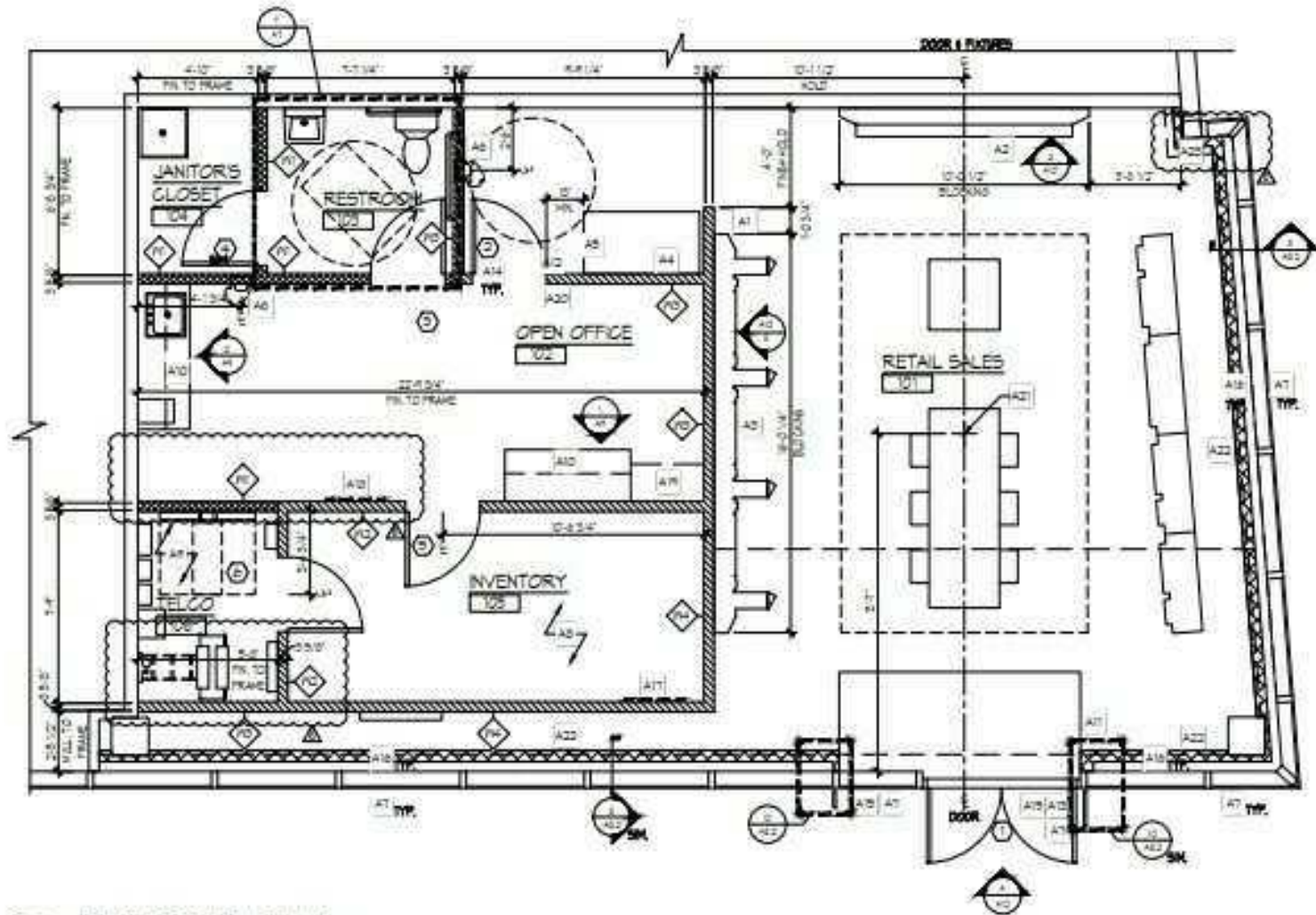
00

MEDIAN INCOME

* Estimated 2023 Demographics based on 1-mile radius

300 8TH AVENUE NORTH, SUITE 108, SEATTLE, WA 98109

ARBOR BLOCKS



1 ARCHITECTURAL PLAN
SCALE 1/4"=1'-0"

ARBOR BLOCKS

