

1006 ANDOVER PARK E

TUKWILA, WA

20,370 SF TOTAL
FOR LEASE



THE ANDOVER
COMPANY, INC.
CORFAC INTERNATIONAL

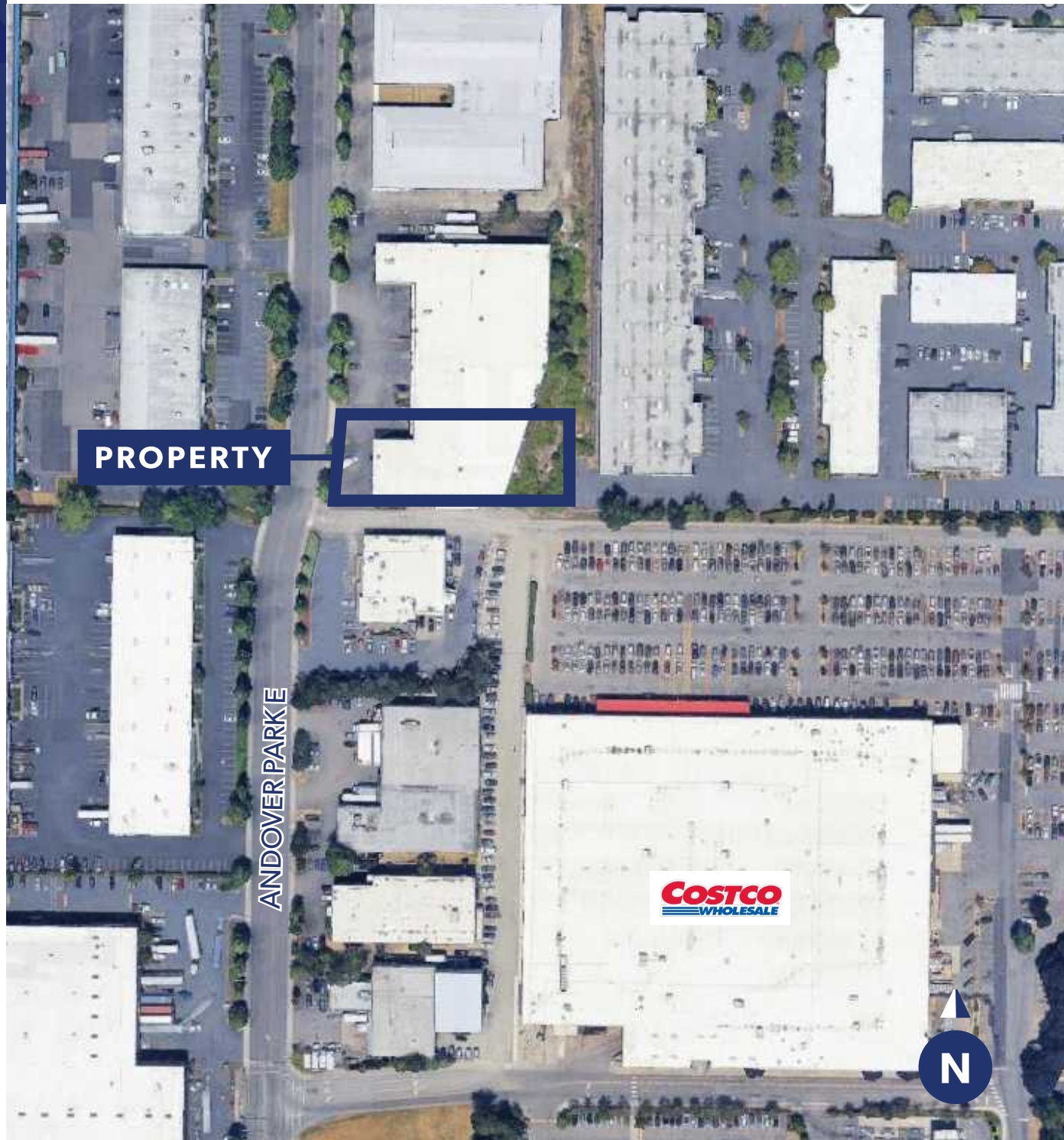
GEORGE ROCKWELL, SIOR
(206) 679-7625
grockwell@andoverco.com

PROPERTY HIGHLIGHTS

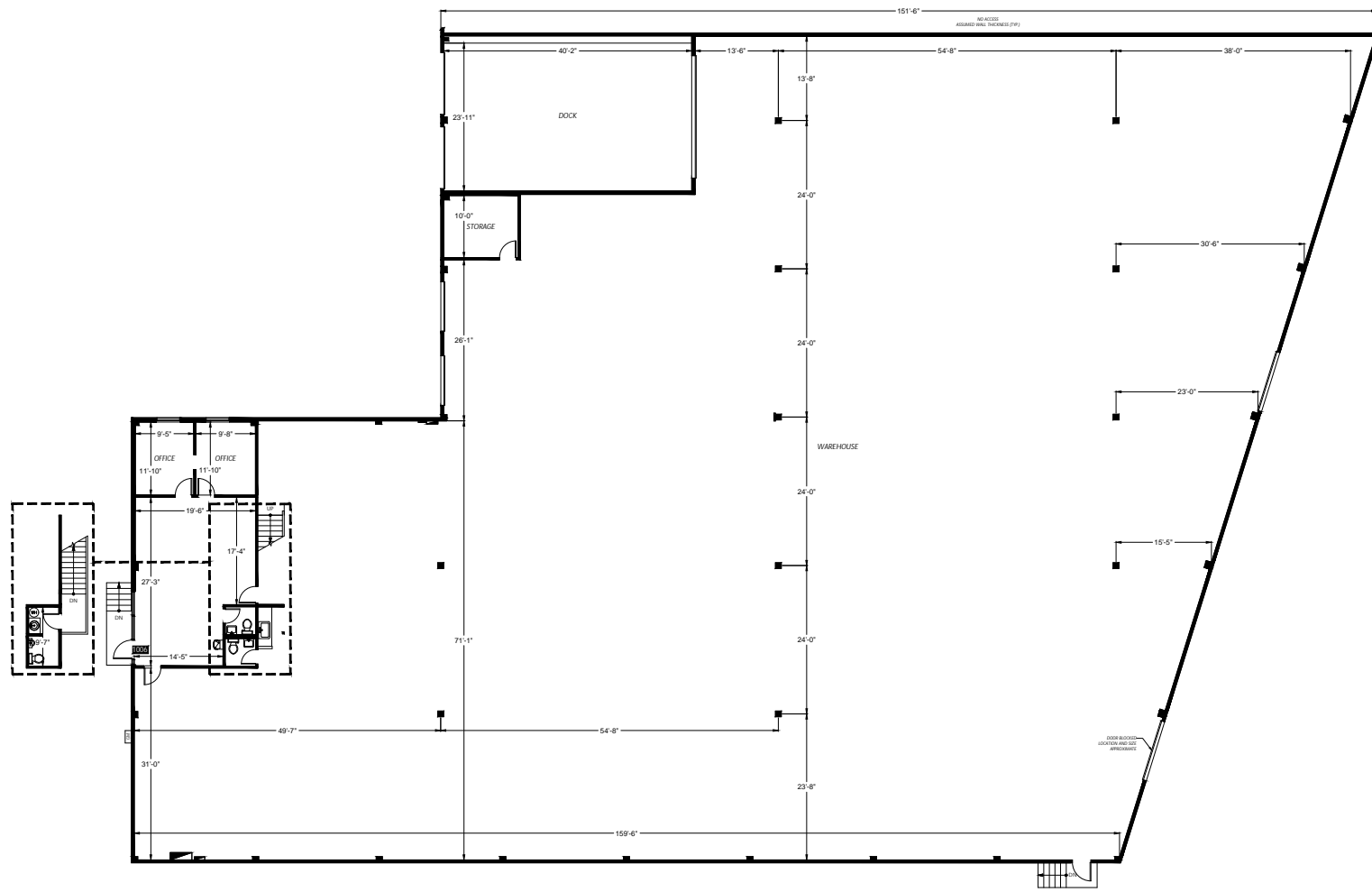
- 4 Dock high doors
- 24' Clear height
- Sprinklered, extra power
- \$0.70 PSF + NNN shell and \$1.00 PSF + NNN on existing office

The information contained herein has been obtained from reliable sources, but is not guaranteed. A prospective buyer/tenant should verify each item relating to this property and all information contained herein.

1006 ANDOVER PARK E | TUKWILA, WA



FLOOR PLANS





1006 ANDOVER PARK E

TUKWILA, WA

GEORGE ROCKWELL, SIOR
(206) 679-7625
grockwell@andoverco.com