



For Sublease | S 200th St Bldg

2333 South 200th St, SeaTac, WA

Prime warehouse location with excellent access to I-5 and SR-509 in SeaTac.

PROPERTY HIGHLIGHTS

- + 7 Dock high doors, 1 Oversized grade level door
- + 16' Clear height
- + Approximately 2,500 SF of fenced yard area
- + Excellent access to I-5 & SR-509
- + Available Now
- + Call Brokers for Pricing

TOTAL SF

11,625 SF

OFFICE SF

1,968 SF

TYPE

NNN

WILL SCHMIDT

Vice President
+1 206 794 0421
wschmidt@nai-psp.com

LUKE JARVIS

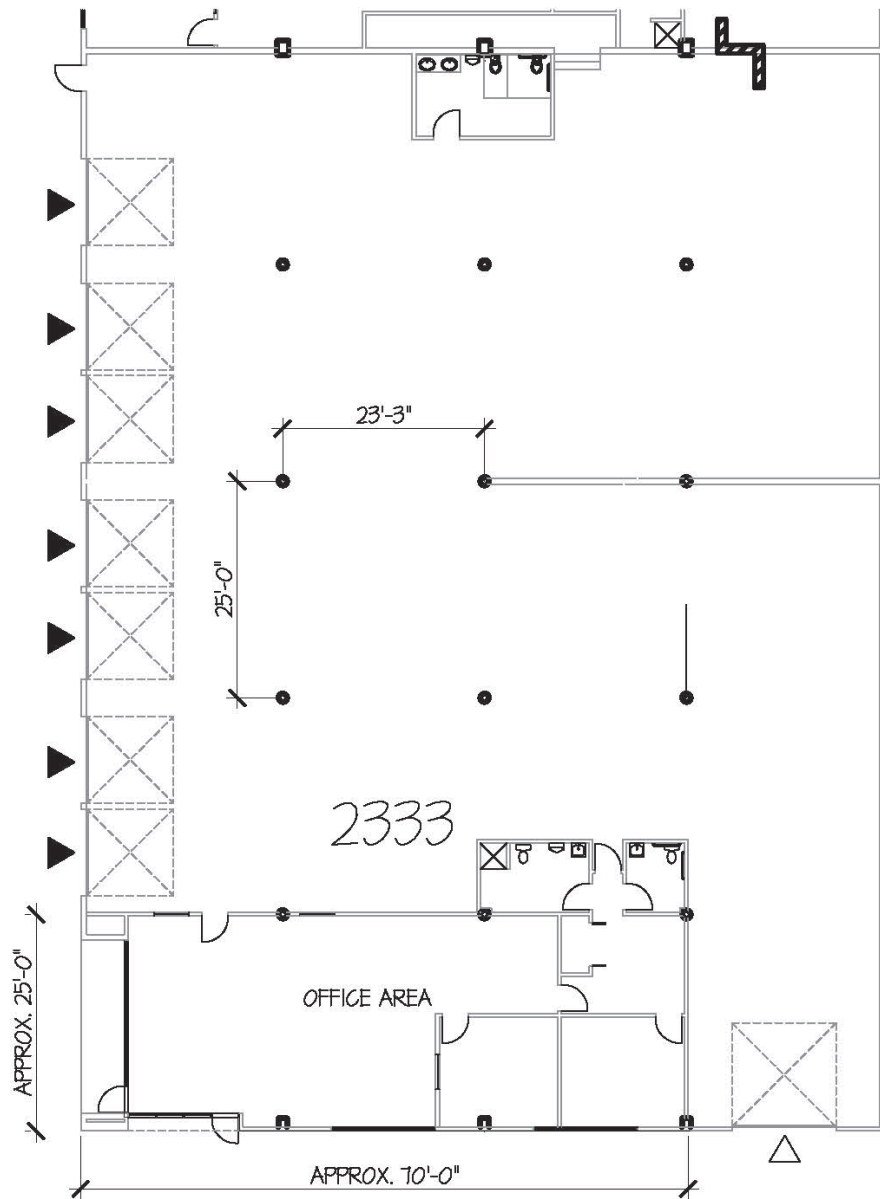
Associate
+1 425 586 5609
lj Jarvis@nai-psp.com



THE INFORMATION CONTAINED HEREIN HAS BEEN GIVEN TO US BY THE OWNER OF THE PROPERTY OR OTHER SOURCES WE DEEM RELIABLE, WE HAVE NO REASON TO DOUBT ITS ACCURACY, BUT WE DO NOT GUARANTEE IT. ALL INFORMATION SHOULD BE VERIFIED PRIOR TO PURCHASE OR LEASE.

nai-psp.com

Floor Plan



- ▶ DOCK HIGH DOOR
- ▷ GRADE LEVEL DOOR

WILL SCHMIDT
Vice President
+1 206 794 0421
wschmidt@nai-psp.com

LUKE JARVIS
Associate
+1 425 586 5609
lj Jarvis@nai-psp.com

