



Edmonds Medical Pavilion
7320 216th St SW

Edmonds Medical Office Portfolio

**MEDICAL OFFICES
FOR LEASE**

Marcus Yamamoto

Senior Vice President

+1 206 292 6062

marcus.yamamoto@cbre.com

John Bauer

Senior Vice President

+1 425 462 6906

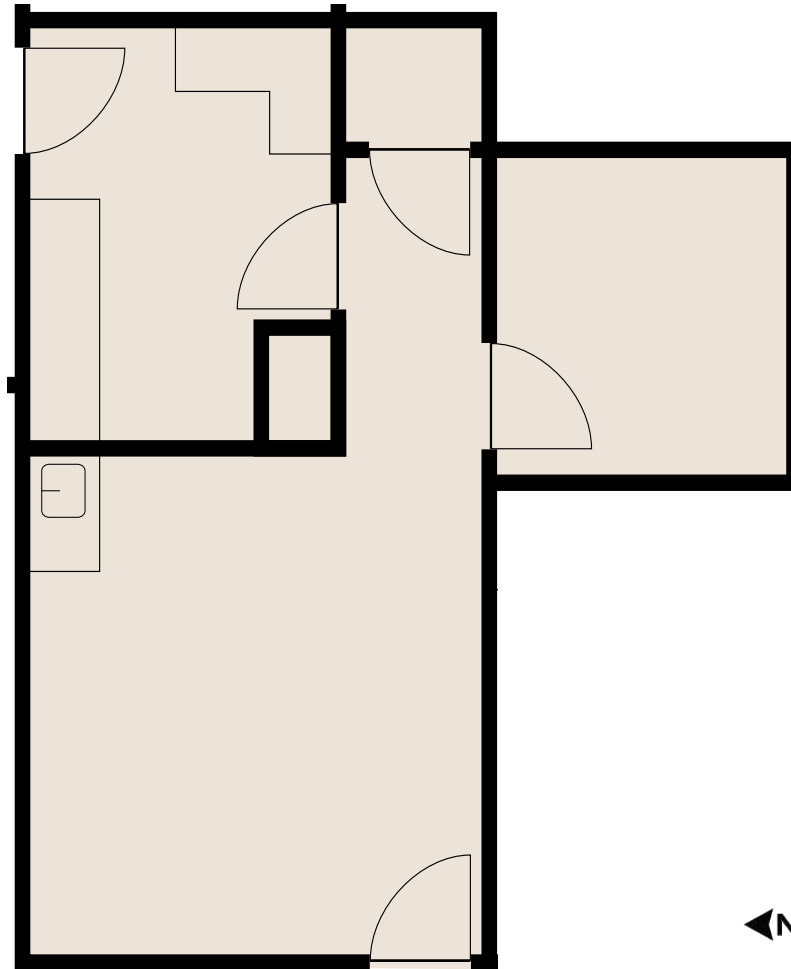
john.bauer@cbre.com

Katie Smith

Senior Associate

+1 206 292 6012

katie.m.smith@cbre.com



Suite 15
As-Built
673 RSF

CBRE



**HEALTHCARE
REALTY**



Edmonds Medical Plaza
21616 76th Ave W

Suite 107
As-Built
1,283 RSF

Edmonds Medical Office Portfolio

**MEDICAL OFFICES
FOR LEASE**

Marcus Yamamoto

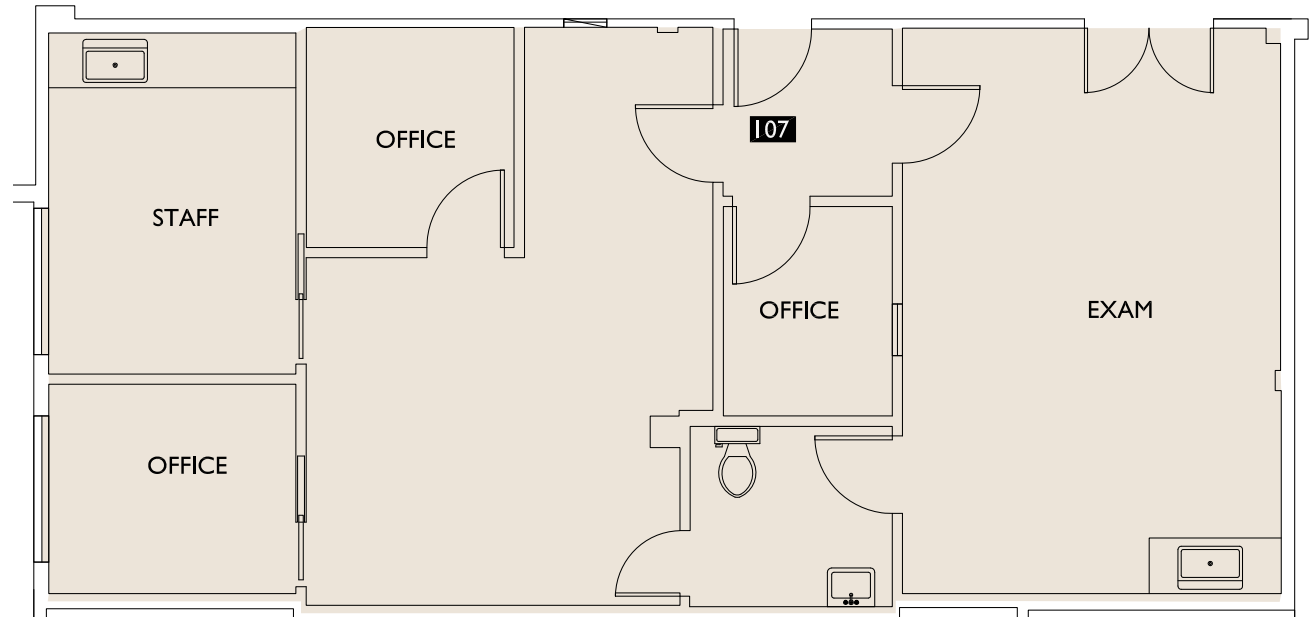
Senior Vice President
+1 206 292 6062
marcus.yamamoto@cbre.com

John Bauer

Senior Vice President
+1 425 462 6906
john.bauer@cbre.com

Katie Smith

Senior Associate
+1 206 292 6012
katie.m.smith@cbre.com



CBRE



**HEALTHCARE
REALTY**

CBRE | 1420 FIFTH AVENUE | SUITE 3800 | SEATTLE, WA 98101



Edmonds Medical Plaza
21616 76th Ave W

Suite 107
Spec Suite - Delivering Q3 2025
1,283 RSF

Edmonds Medical Office Portfolio

**MEDICAL OFFICES
FOR LEASE**

Marcus Yamamoto

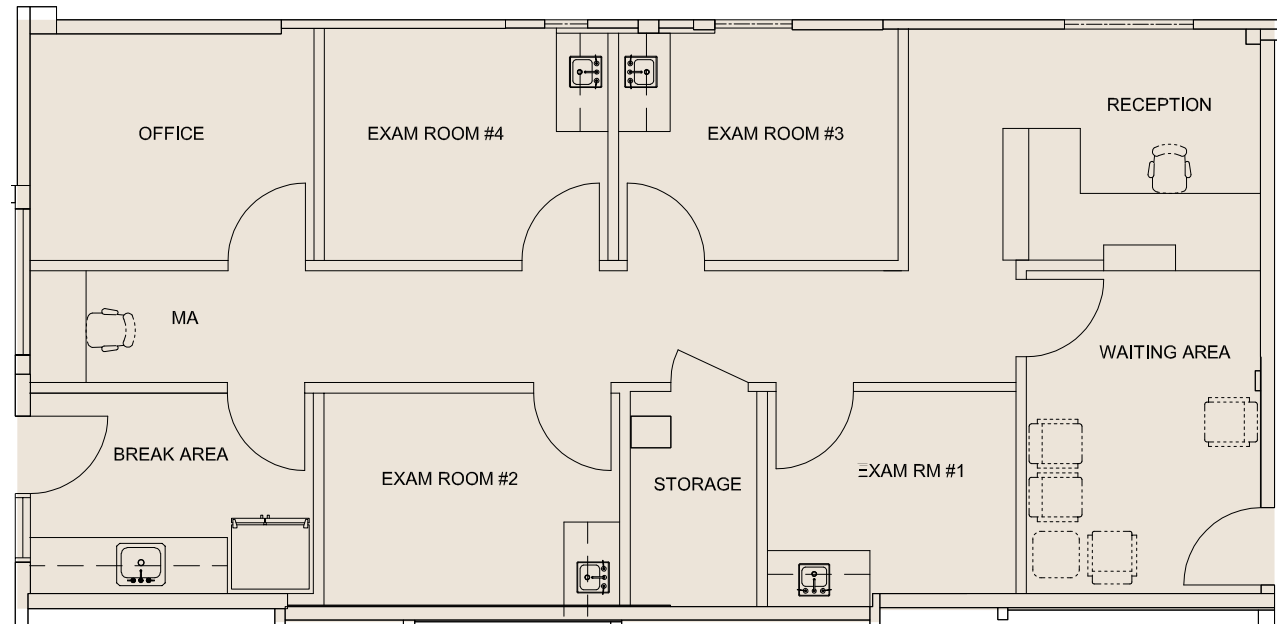
Senior Vice President
+1 206 292 6062
marcus.yamamoto@cbre.com

John Bauer

Senior Vice President
+1 425 462 6906
john.bauer@cbre.com

Katie Smith

Senior Associate
+1 206 292 6012
katie.m.smith@cbre.com



CBRE



**HEALTHCARE
REALTY**



Edmonds Medical Plaza
21616 76th Ave W

Suite 108
As-Built
1,337 RSF

Edmonds Medical Office Portfolio

**MEDICAL OFFICES
FOR LEASE**

Marcus Yamamoto

Senior Vice President

+1 206 292 6062

marcus.yamamoto@cbre.com

John Bauer

Senior Vice President

+1 425 462 6906

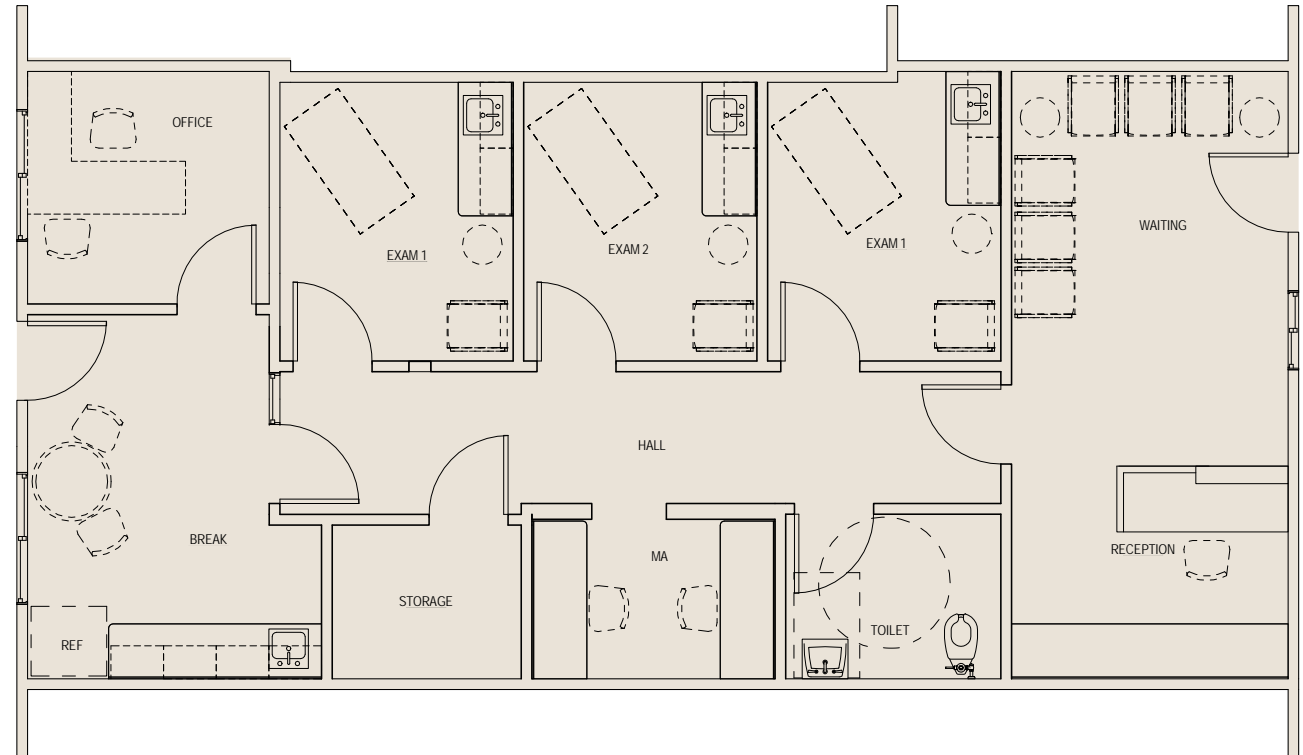
john.bauer@cbre.com

Katie Smith

Senior Associate

+1 206 292 6012

katie.m.smith@cbre.com



CBRE



**HEALTHCARE
REALTY**

CBRE | 1420 FIFTH AVENUE | SUITE 3800 | SEATTLE, WA 98101



Edmonds Medical Plaza
21616 76th Ave W

Suite 112
As-Built
4,168 RSF

Edmonds Medical Office Portfolio

**MEDICAL OFFICES
FOR LEASE**

Marcus Yamamoto

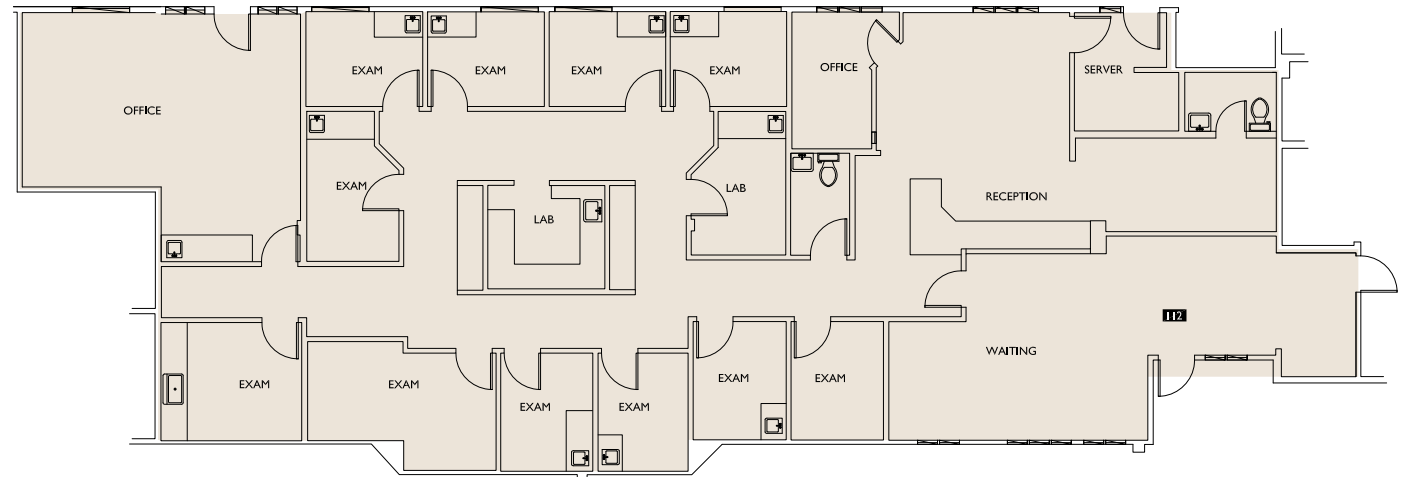
Senior Vice President
+1 206 292 6062
marcus.yamamoto@cbre.com

John Bauer

Senior Vice President
+1 425 462 6906
john.bauer@cbre.com

Katie Smith

Senior Associate
+1 206 292 6012
katie.m.smith@cbre.com



CBRE



**HEALTHCARE
REALTY**



Edmonds Medical Plaza
21616 76th Ave W

Suite 112
Concept Clinic Plan
4,168 RSF

Edmonds Medical Office Portfolio

**MEDICAL OFFICES
FOR LEASE**

Marcus Yamamoto

Senior Vice President

+1 206 292 6062

marcus.yamamoto@cbre.com

John Bauer

Senior Vice President

+1 425 462 6906

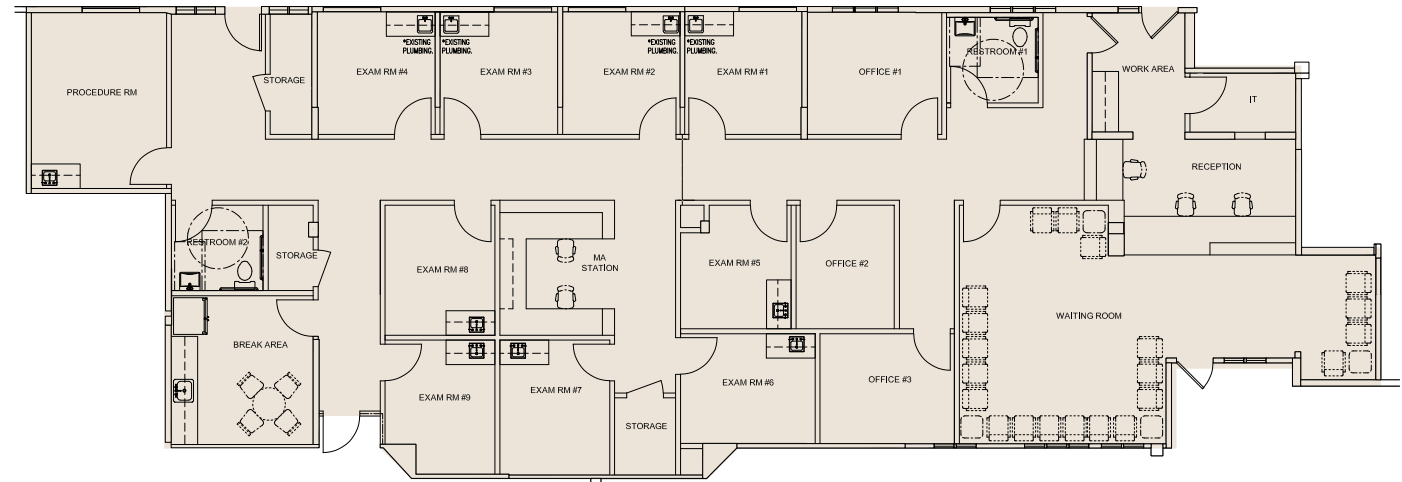
john.bauer@cbre.com

Katie Smith

Senior Associate

+1 206 292 6012

katie.m.smith@cbre.com



CBRE



**HEALTHCARE
REALTY**