

FOR LEASE ARBOR BLOCKS

BUILT-OUT RESTAURANT SPACE

333 8th Ave N, Seattle, WA 98109



For more information please contact:

LAURA MILLER

laura@gibraltarus.com

206.351.3573



333 8TH AVE N, SEATTLE, WA 98109

2ND GENERATION RESTAURANT SPACE



PROPERTY HIGHLIGHTS

- Prime, high visibility corner, 2nd generation restaurant space in the heart of South Lake Union
- Located at the base of Arbor Blocks, home to the 2-tower, 384,000 sq ft office space occupied by FACEBOOK
- Ideal for quick-serve concepts
- Type 1 hood installed, large storefront windows, outside patio seating
- 27 public parking stalls (validation program available), monthly garage parking \$300/stall
- Surrounding businesses include Hangang Ramen (coming soon), M00V Pilates, EVOKE Cafe Bar, Jack's BBQ, Thomas Street Warehouse, Fresh Flours, and Tous les Jours
- 1,421 SF
- Do not disturb existing tenant; call for details on the equipment list
- Rental Rate: \$48/SF plus 2025 NNN (\$11.12) = \$7,000 per month



90

TRANSIT SCORE



97

WALK SCORE



84

BIKE SCORE



191,696

TOTAL POPULATION



113,628

TOTAL HOUSEHOLDS



\$109,020

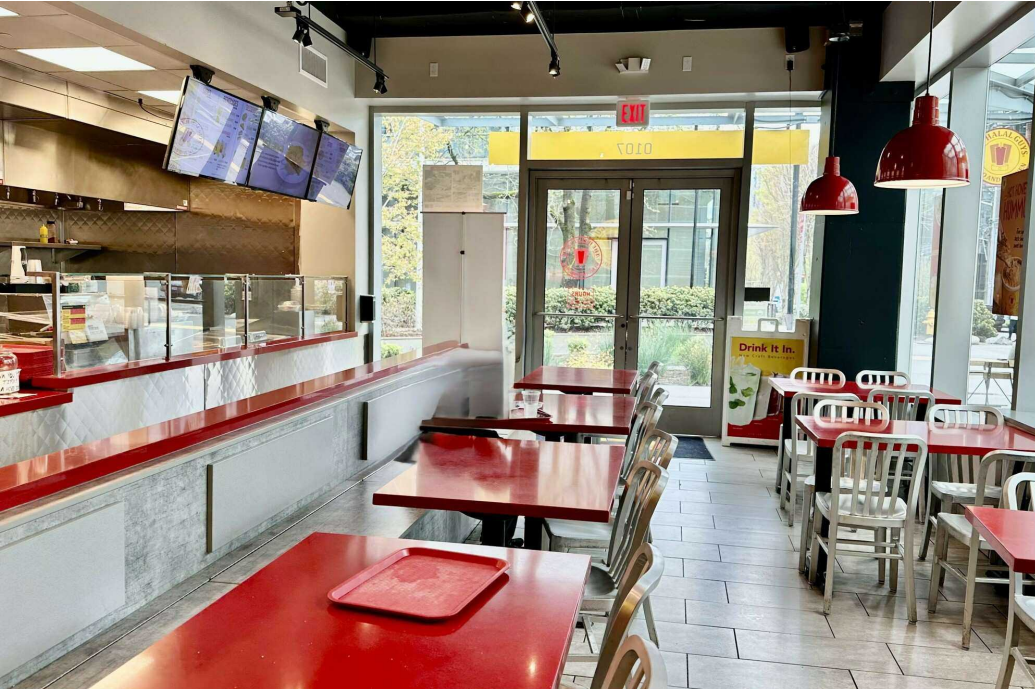
MEDIAN INCOME

* 2024 demographics based on a 2-mile radius (Costar)

This information has been obtained from sources believed reliable. No guarantee, warranty or representation, express or implied, is made as to the accuracy of the information contained herein, and same is submitted subject to errors, omissions, change of price, rental or other conditions withdrawal without notice, and to any special listing conditions, imposed by our principals. Any projections, opinions, assumptions or estimates used are for example only and do not represent the current or future performance of the property.

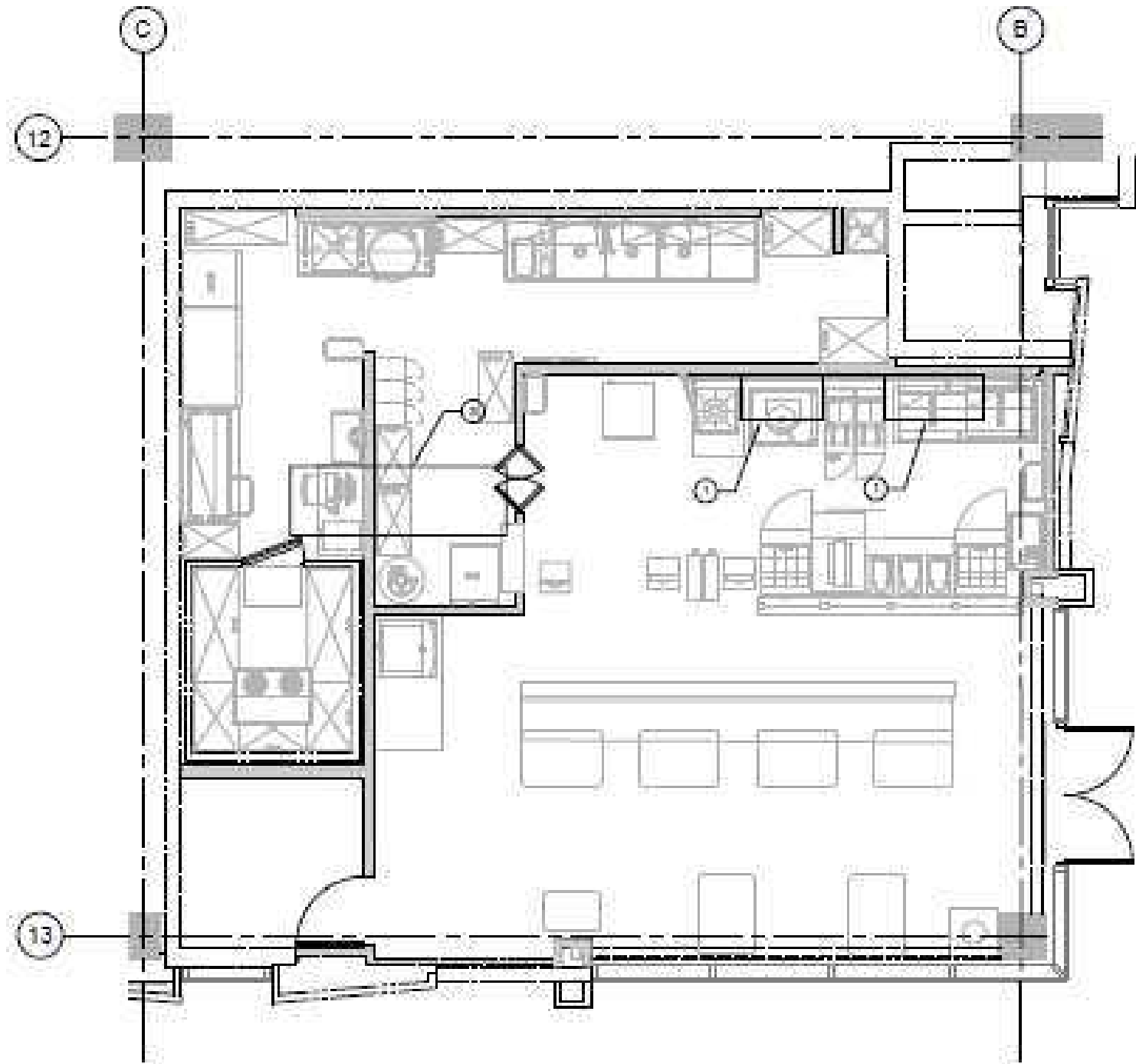
333 8TH AVE N, SEATTLE, WA 98109

2ND GENERATION RESTAURANT SPACE



333 8TH AVE N, SEATTLE, WA 98109

2ND GENERATION RESTAURANT SPACE



333 8TH AVE N, SEATTLE, WA 98109

2ND GENERATION RESTAURANT SPACE

