

FOR SUBLEASE

13427 BUILDING

*9,984 SF Industrial Building Located
in the Factoria Area of Bellevue, WA*

13427 SE 27TH PL, BELLEVUE, WA



*Conveniently located in Factoria,
with easy access to I-405 and I-90*

1,920 SF office, 8,064 SF warehouse

Sublease term through 6/30/2027 (longer term
available direct through landlord)

16' clear height

Zoning: Light Industrial (LI), City of Bellevue

Grade-level loading

Includes fenced outdoor area

9,984 SF

TOTAL AVAILABLE

CALL

BROKERS FOR RATES



FLOOR PLAN

9,984 SF

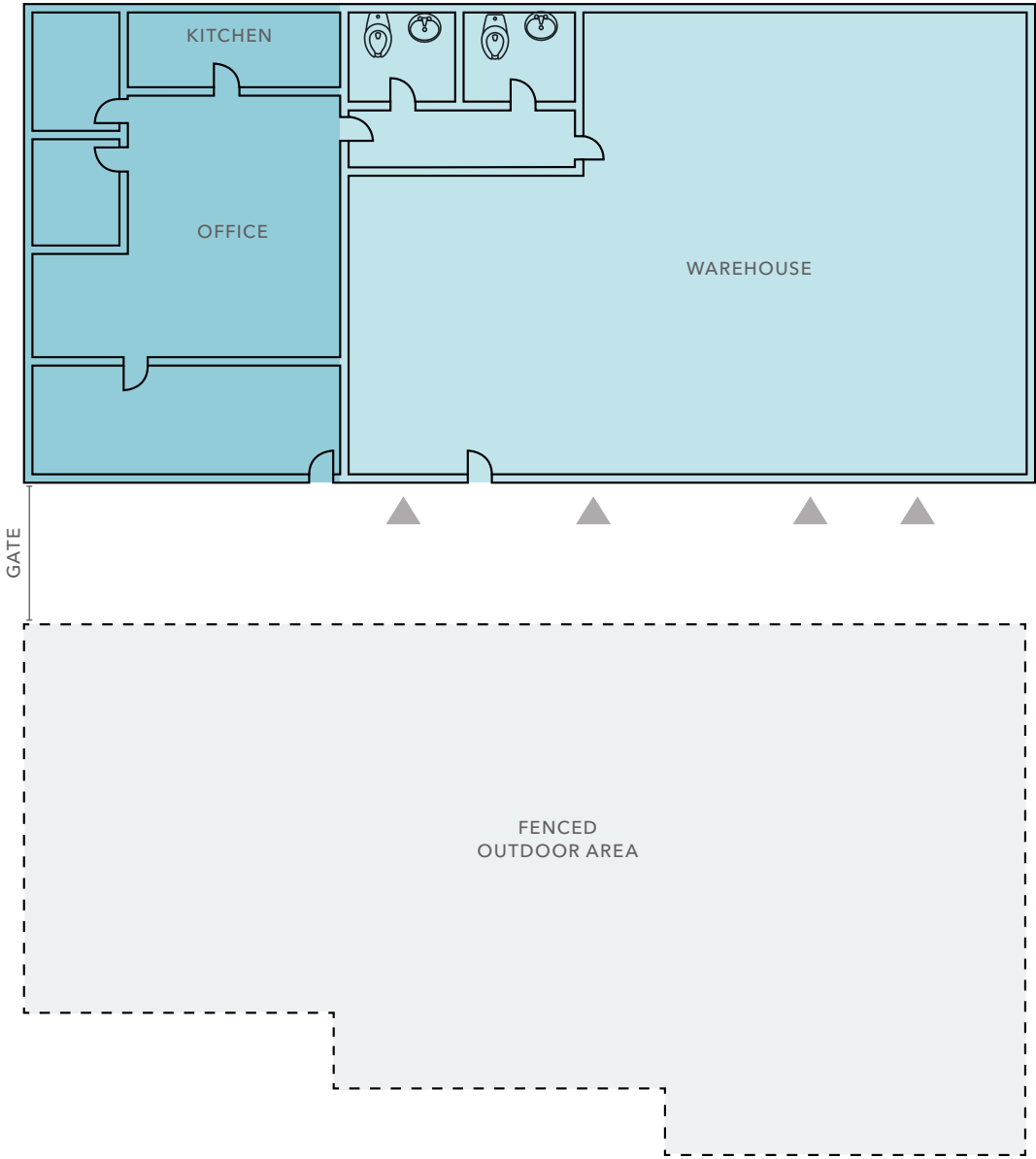
AVAILABLE

CALL

BROKERS FOR RATES

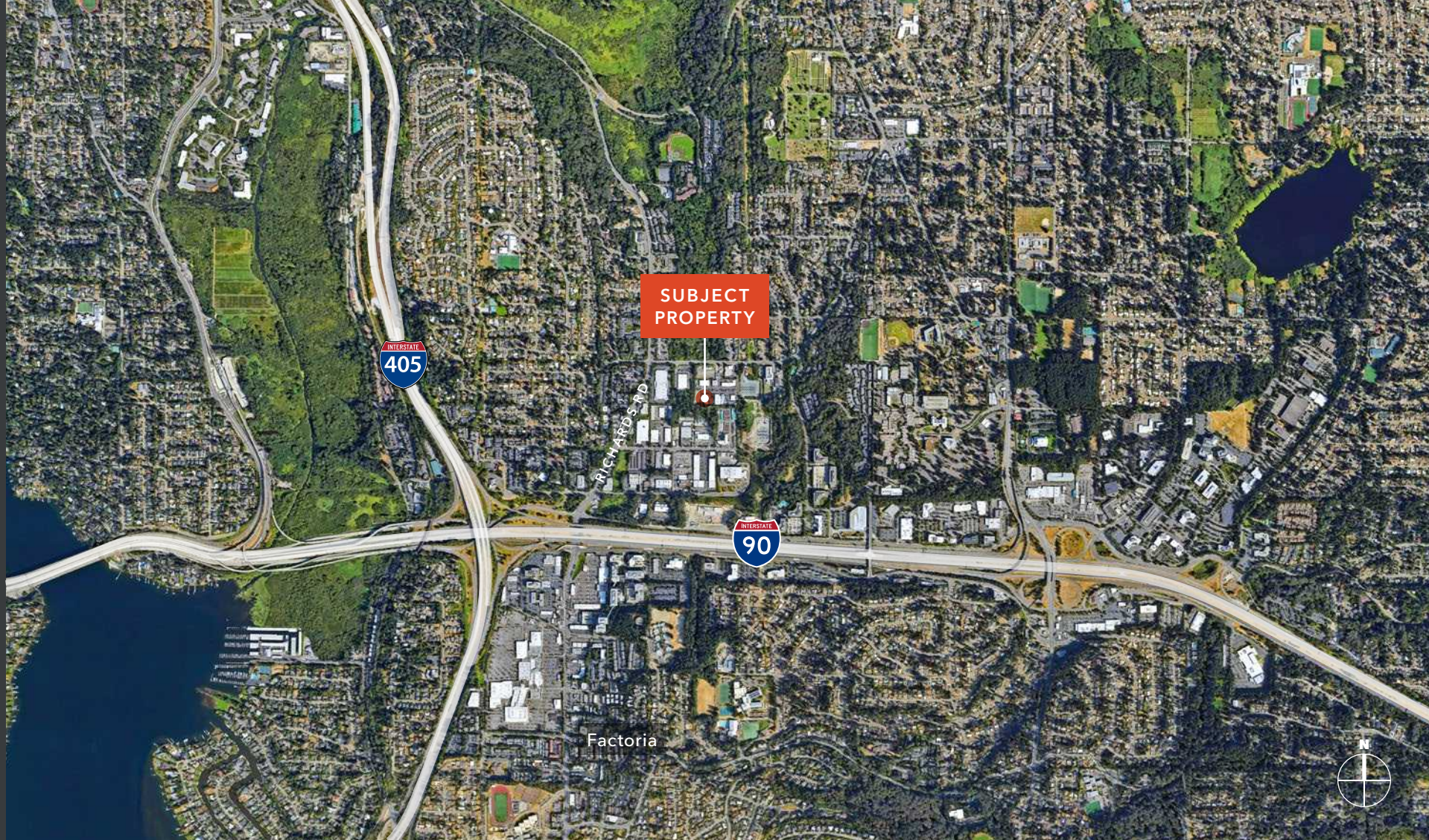
NOW

AVAILABLE



Grade-level loading





For more information, contact

GARY GUENTHER

425.450.1154

gary.guenther@kidder.com

JASON BLOOM

425.450.1102

jason.bloom@kidder.com

TODD GAUTHIER

425.450.1118

todd.gauthier@kidder.com

KIDDER.COM

This information supplied herein is from sources we deem reliable. It is provided without any representation, warranty, or guarantee, expressed or implied as to its accuracy. Prospective Buyer or Tenant should conduct an independent investigation and verification of all matters deemed to be material, including, but not limited to, statements of income and expenses. Consult your attorney, accountant, or other professional advisor. All Kidder Mathews designs are the sole property of Kidder Mathews. Branded materials and layouts are not authorized for use by any other firm or person.

