

FOR LEASE

# WOODINVILLE COMMERCE CENTER

*Industrial / Office Spaces  
Available in Woodinville*

18500 - 18808 142ND AVE NE  
WOODINVILLE, WA



KIDDER.COM

**km** Kidder  
Mathews



AVAILABILITIES

BUILDING A	Office	Warehouse	Total
SUITE 3B	1,040 SF	933 SF	1,973 SF

BUILDING E	Office	Warehouse	Total
SUITES 18660 / 18690	745 SF	1,500 SF	2,245 SF
SUITE 18672	1,250 SF	0 SF	1,250 SF
SUITE 18678	1,250 SF	0 SF	1,250 SF
SUITES 18672 / 18678	2,500 SF	0 SF	2,500 SF

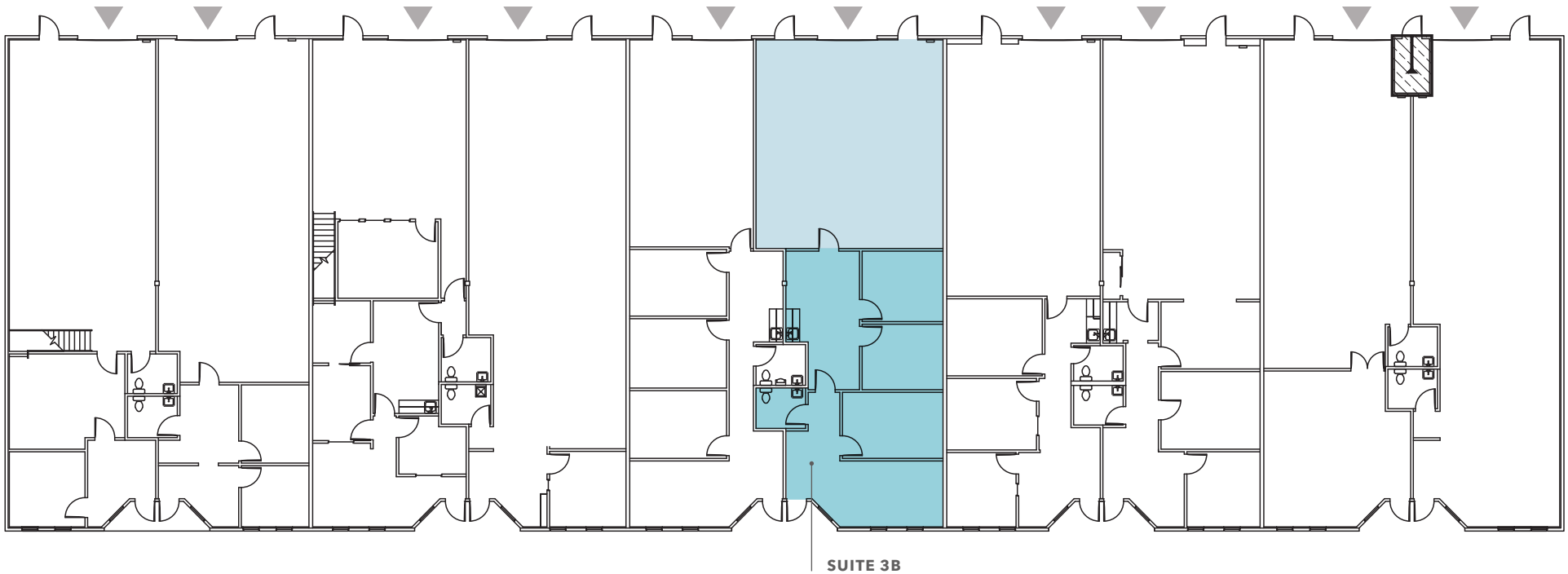
BUILDING G	Office	Warehouse	Total
SUITES 18550	625 SF	0 SF	625 SF



# BUILDING A

LEGEND

- Office
- Warehouse
- Grade-Level Loading



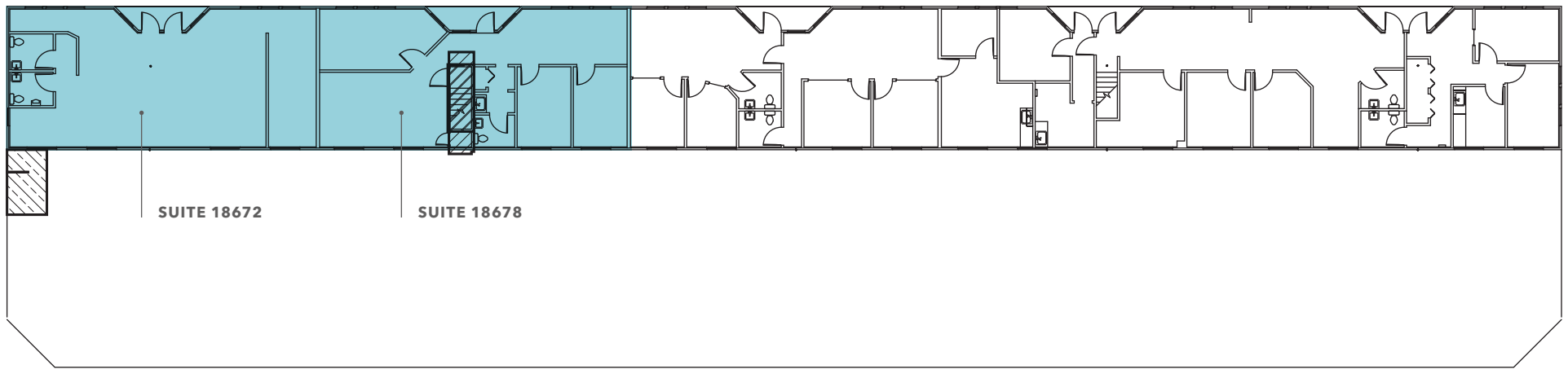
Suite	Total Area	Office/Warehouse	Monthly Base Rent	NNN	Loading	Available	Notes
3B	1,973 SF	1,040 SF / 933 SF	\$3,630.00	\$986.50	Grade-Level	Now	Three privates, kitchenette, small conference room

# BUILDING E

UPPER LEVEL

LEGEND

- Office
- Warehouse
- Grade-Level Loading



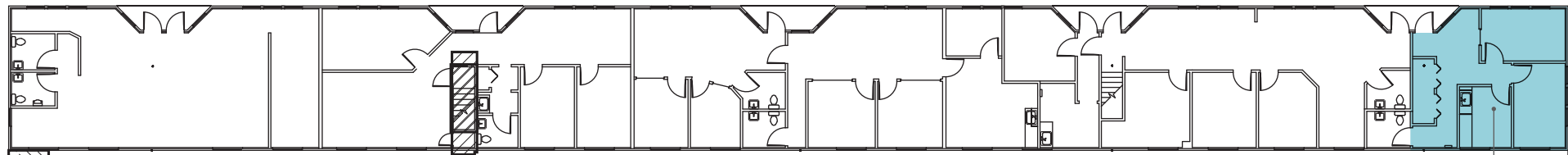
Suite	Total Area	Office/Warehouse	Monthly Base Rent	NNN	Loading	Available	Notes
18672	1,250	1,250/0	\$2,500	\$625.00	N/A	Now	Deli/Catering Space
18678	1,250	1,250/0	\$2,500	\$625.00	N/A	Now	Office Space
18672 & 18678	2,500	2,500/0	\$5,000	\$1,250.00	N/A	Now	Both Spaces Combined Before Converting Deli into Office Space

# BUILDING E

LEGEND

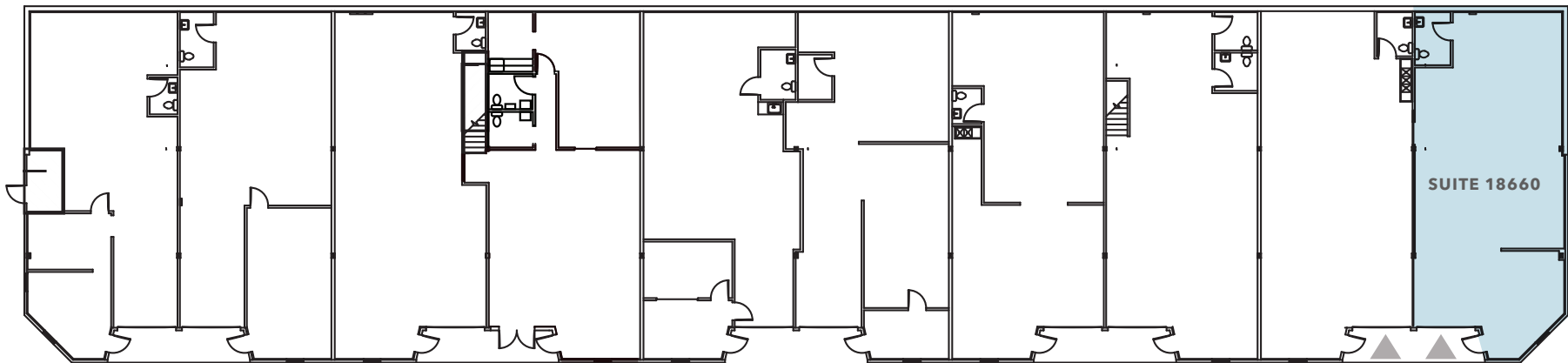
- Office
- Warehouse
- Grade-Level Loading

UPPER LEVEL



SUITE 18690

LOWER LEVEL



SUITE 18660

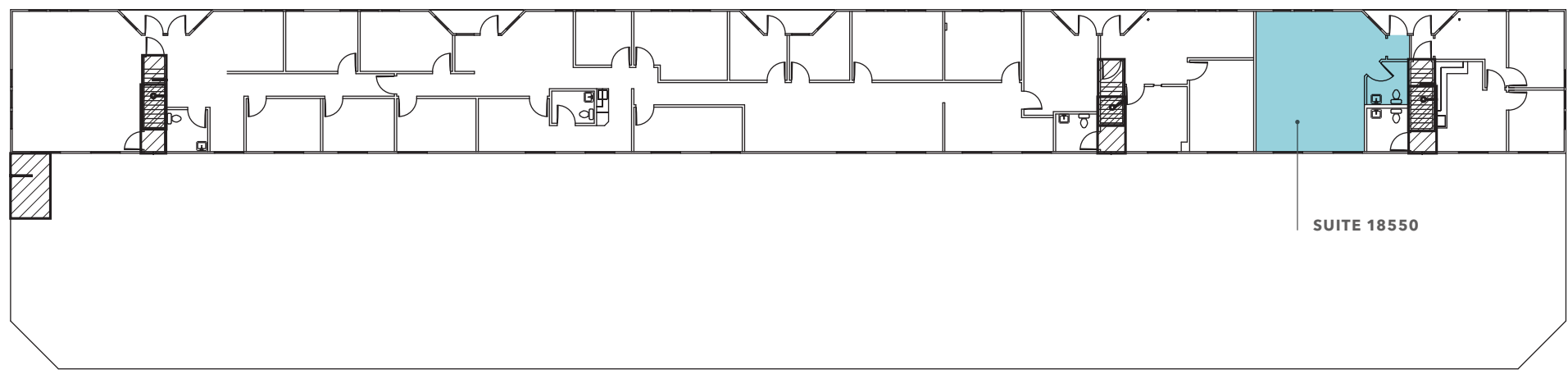
Suite	Total Area	Office/Warehouse	Monthly Base Rent	NNN	Loading	Available	Notes
18660 & 18690	2,245	745/1,500	\$3,889.50	\$1,122.50	Grade Level	Now	Upstairs office, downstairs warehouse

# BUILDING G

UPPER LEVEL

LEGEND

- Office
- Warehouse
- Grade-Level Loading



Suite	Total Area	Office/Warehouse	Monthly Base Rent	NNN	Loading	Available	Notes
18550	625 SF	625 SF / 0 SF	\$1,250	\$281.25	None	30-Day Notice	Pure Office



WOODINVILLE COMMERCE CENTER







# WOODINVILLE COMMERCE CENTER

*Exclusively  
Listed by*

**TODD GAUTHIER**  
Executive Vice President  
425.450.1118  
todd.gauthier@kidder.com

**JASON BLOOM**  
Executive Vice President  
425.450.1102  
jason.bloom@kidder.com

**CARTER NICHOLSON**  
Associate  
425.450.1145  
carter.nicholson@kidder.com

**KIDDER.COM**

This information supplied herein is from sources we deem reliable. It is provided without any representation, warranty, or guarantee, expressed or implied as to its accuracy. Prospective Buyer or Tenant should conduct an independent investigation and verification of all matters deemed to be material, including, but not limited to, statements of income and expenses. Consult your attorney, accountant, or other professional advisor.

