

AVAILABLE NOW | 2930 NEWMARKET STREET, BELLINGHAM, WA 98226



Barkley  
VILLAGE

RETAIL & RESTAURANT SPACE



BARKLEY  
VILLAGE  
RETAIL

BRING YOUR FLAGSHIP RETAIL  
AND RESTAURANT CONCEPT  
TO THE NEWLY IMAGINED  
BARKLEY VILLAGE

FOR MORE INFORMATION PLEASE CONTACT:

TRACY CORNELL

tracyc@gibraltarus.com  
206.948.0630

MADELINE STUTZ

madelines@wccommercialrealty.com  
206.422.7598

WCCR  
West Coast Commercial Realty

GIBRALTAR  
INVESTMENT PROPERTY SOLUTIONS





## THE SITE

Barkley Village retail is part of a 250-acre mixed-use development urban village located east of I-5, off of Sunset Drive. This development is the premier office, residential and retail in the trade area. Anchored by Haggen grocery store and Regal Cinema.

400,000 SF

OF  
OFFICE  
SPACE

44,400 SF

OF RETAIL SPACE  
AT BARKLEY  
VILLAGE

144,000 SF

OF  
TOTAL  
RETAIL

275,000 SF

OF  
RESIDENTIAL  
(325 UNITS)

DRAKE  
41 UNITS

CORNERSTONE  
116 UNITS

WEATHERBY  
91 UNITS

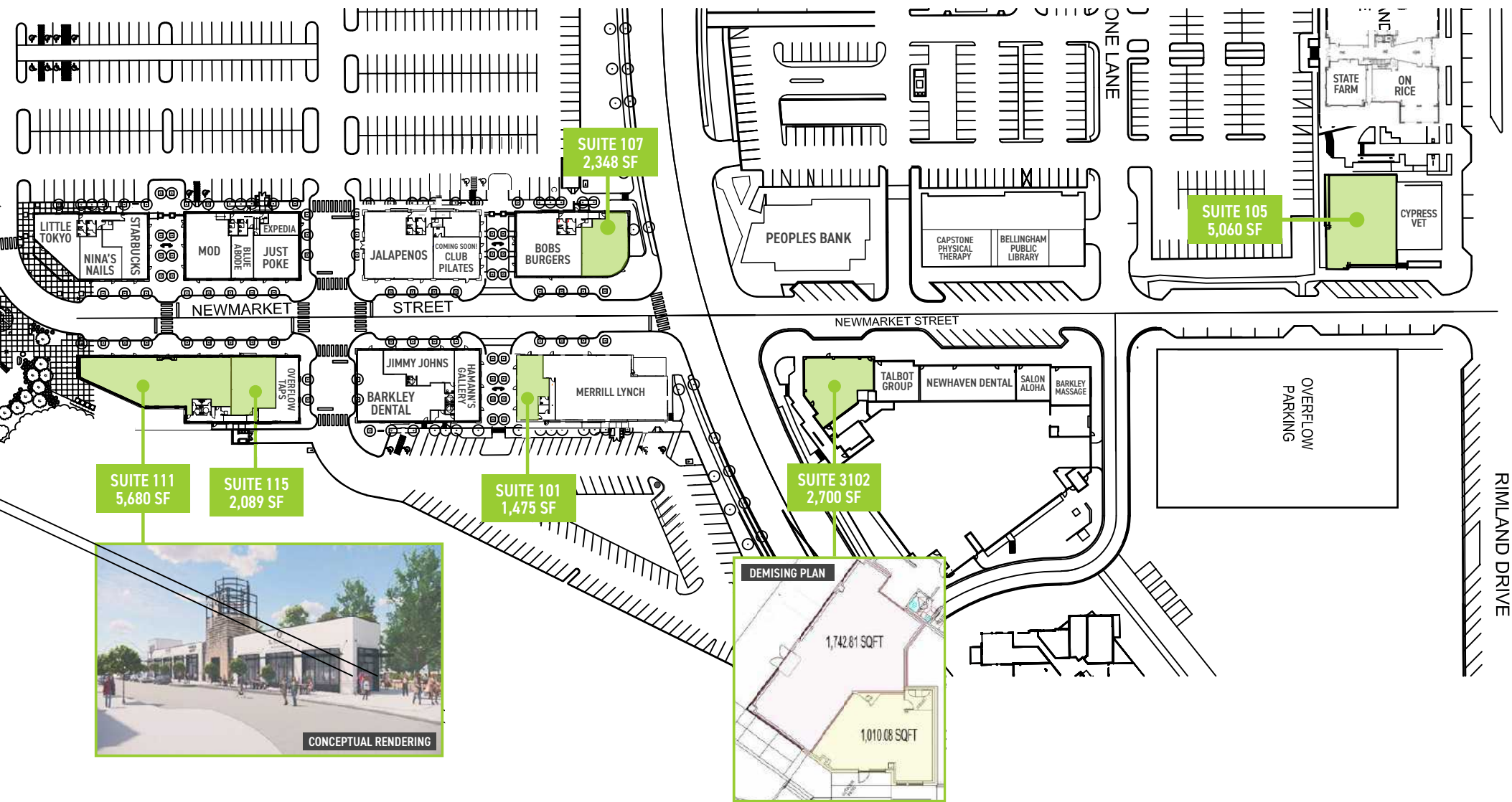
TRAILVIEW  
77 UNITS



## AVAILABLE RETAIL

SUITE	RSF	NNN RATE EST. 2025	LEASE RATE	DESCRIPTION
2210	5,060	\$10.53	\$28.00	Office/service space available. Outdoor patio.
101	1,474	\$10.53	Call for Rates	Retail and fitness uses.
107	2,348	\$10.53	Call for Rates	End cap available. All retail uses.
115	2,088	\$10.53	Call for Rates	Retail and fitness uses.
3102	2,700	\$10.53	Call for Rates	End cap available, new storefront & outdoor patio, Class I hood capability, warm shell delivery. Space can be demised.
111	5,680	\$10.53	Call for Rates	Space can be demised, new storefront & patio, can accommodate Class I hood, warm shell delivery. See attached conceptual elevations and demising plan.





## SUITE 111

### TAPROOM

GROSS AREA = 1,577 SF  
BOH = 730 SF  
FOH = 847 SF  
OCCUPANCY = ASSEMBLY (A-2)  
SEAT COUNT TOTAL = 94  
INDOOR = 74  
OUTDOOR (STREET SIDE) = 20

### RETAIL

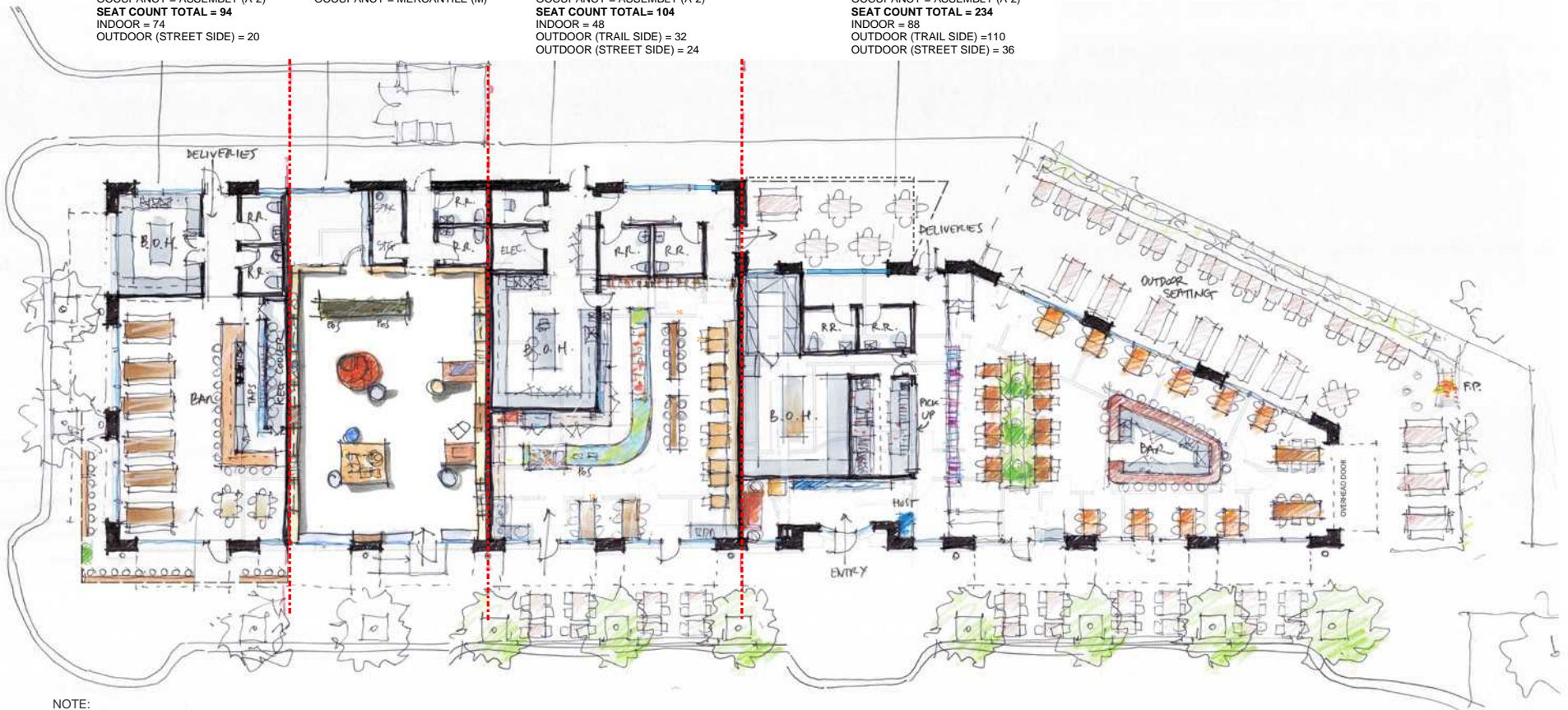
GROSS AREA = 1,867 SF  
BOH = 440 SF  
FOH = 1,427 F  
OCCUPANCY = MERCANTILE (M)

### BAKERY

GROSS AREA = 2,308 SF  
BOH = 1,320 SF  
FOH = 988 SF  
OCCUPANCY = ASSEMBLY (A-2)  
SEAT COUNT TOTAL = 104  
INDOOR = 48  
OUTDOOR (TRAIL SIDE) = 32  
OUTDOOR (STREET SIDE) = 24

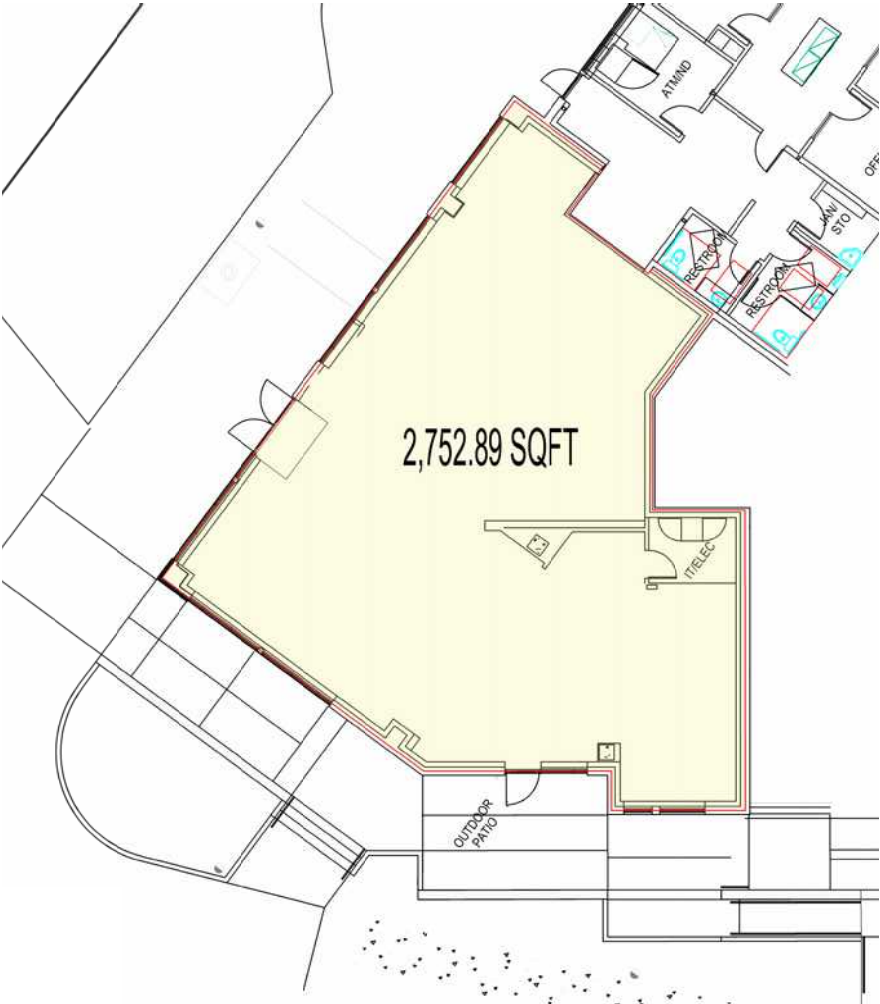
### RESTAURANT

GROSS AREA = 3,424 SF  
BOH = 1,050 GSF  
FOH = 2,374 GSF  
OCCUPANCY = ASSEMBLY (A-2)  
SEAT COUNT TOTAL = 234  
INDOOR = 88  
OUTDOOR (TRAIL SIDE) = 110  
OUTDOOR (STREET SIDE) = 36

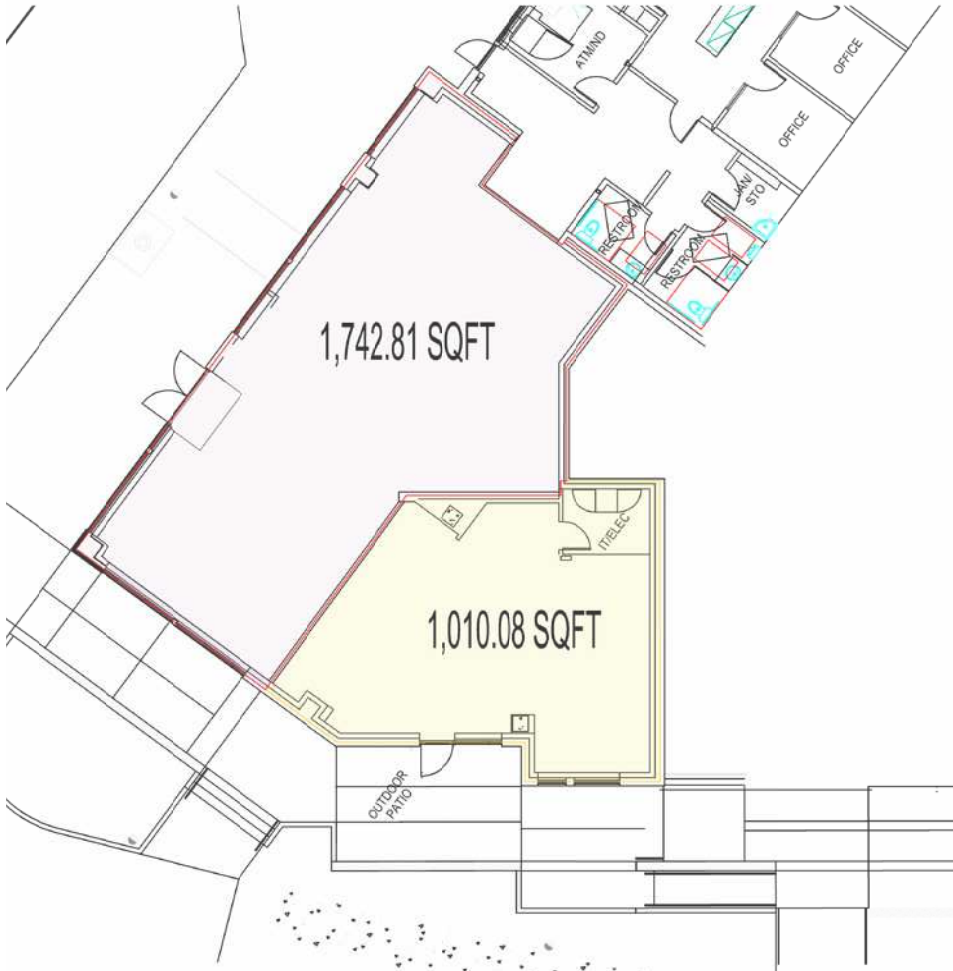


NOTE:  
Square footages shown are approximate measurements provided for conceptual leasing purposes. "Usable", "Rentable" and other square footage measurements may change as a result of a number of factors including but not limited to the construction of improvements and the location of utilities and building services. The measurements must be independently verified by any party using the information and may not be used other than for conceptual purposes.

SUITE 3102



DEMISING PLAN







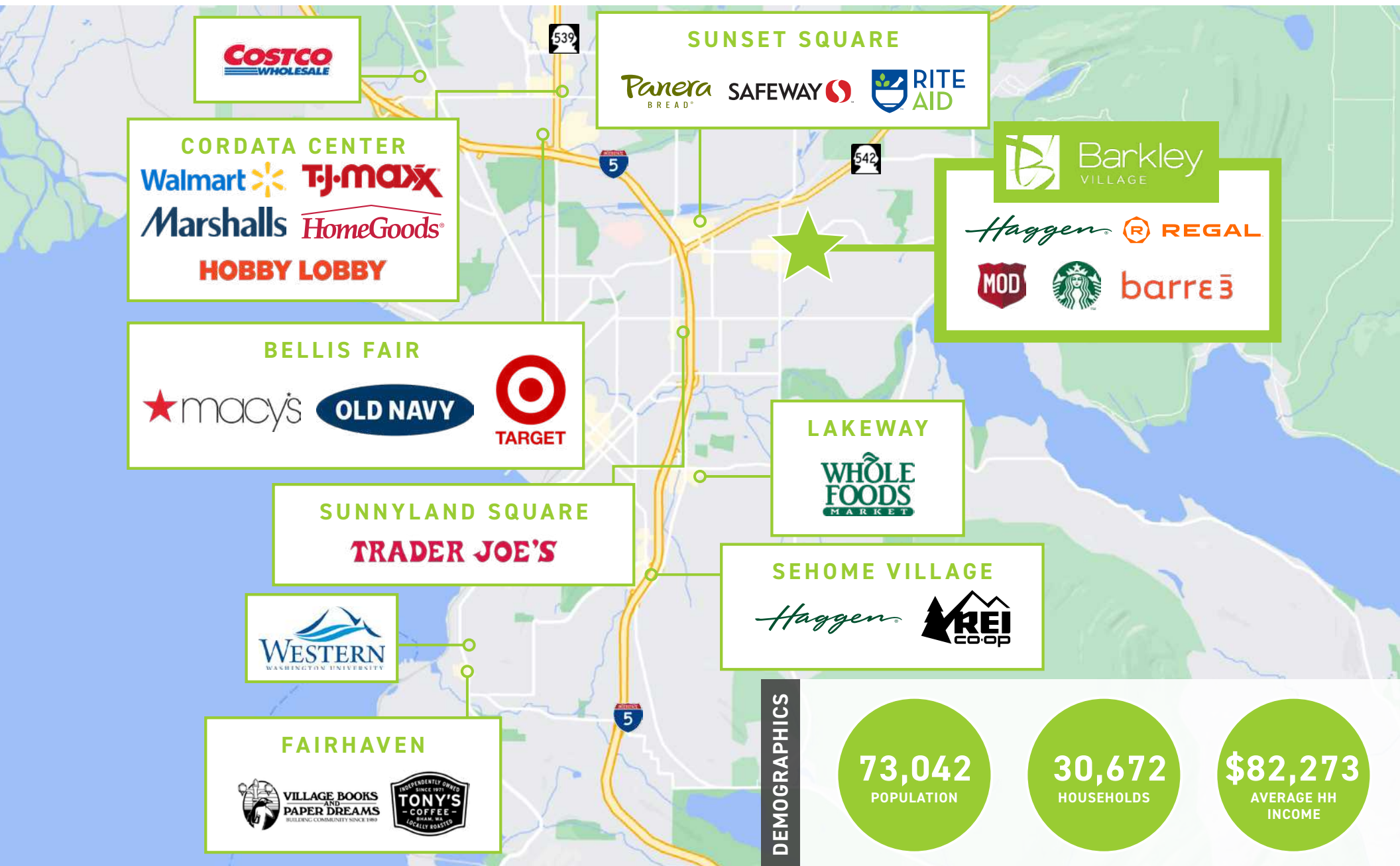


## BELLINGHAM TRADE AREA

Bellingham is situated about 20 miles south of the U.S.-Canada border and roughly 90 miles north of Seattle. In addition to its growing residential community and students from Western Washington, Bellingham is known as a tourist destination and a gateway to outdoor recreational areas and activities such as hiking, skiing, sailing and biking, which extends its trade area to visitors from outside the immediate region.







DEMOGRAPHICS



\* 2023 DEMOGRAPHICS BASED ON A 3-MILE RADIUS



**FOR MORE INFORMATION PLEASE CONTACT:**

**TRACY CORNELL**

tracyc@gibraltarusa.com

206.948.0630

**MADELINE STUTZ**

madelines@wccommercialrealty.com

206.422.7598



This information has been obtained from sources believed reliable. No guarantee, warranty or representation, express or implied, is made as to the accuracy of the information contained herein, and same is submitted subject to errors, omissions, change of price, rental or other conditions withdrawal without notice, and to any special listing conditions, imposed by our principals. Any projections, opinions, assumptions or estimates used are for example only and do not represent the current or future performance of the property.