



COMMERCIAL

SELTICE MEDICAL BUILDING

CLASS A RETAIL SPACE FOR LEASE / 3330 GRANDMILL LN COEUR D'ALENE 83814



CLASS A+ YOGA/FITNESS
OPPORTUNITY

CONTACT

DON CRAWFORD

208.660.1207

don@tokcommercial.com

BRENNEN CRAWFORD

208.755.0920

brennen@tokcommercial.com

HIGHLIGHTS

Class A lease space.

Currently set up for athletic facility.

Potential uses include, yoga studio, gym, pilates, etc.

50+ high-end townhomes under construction across the way.

High-end retail business adjacent to the available lease space.

DETAILS

AVAILABLE SPACE:

Suite 2

SPACE SIZE:

1,686 SF

LEASE RATE:

\$3,300/Month

LEASE TERM:

5 Years

LEASE TYPE:

Modified Gross

ZONING:

CDA-C-17

AVAILABLE:

Immediately

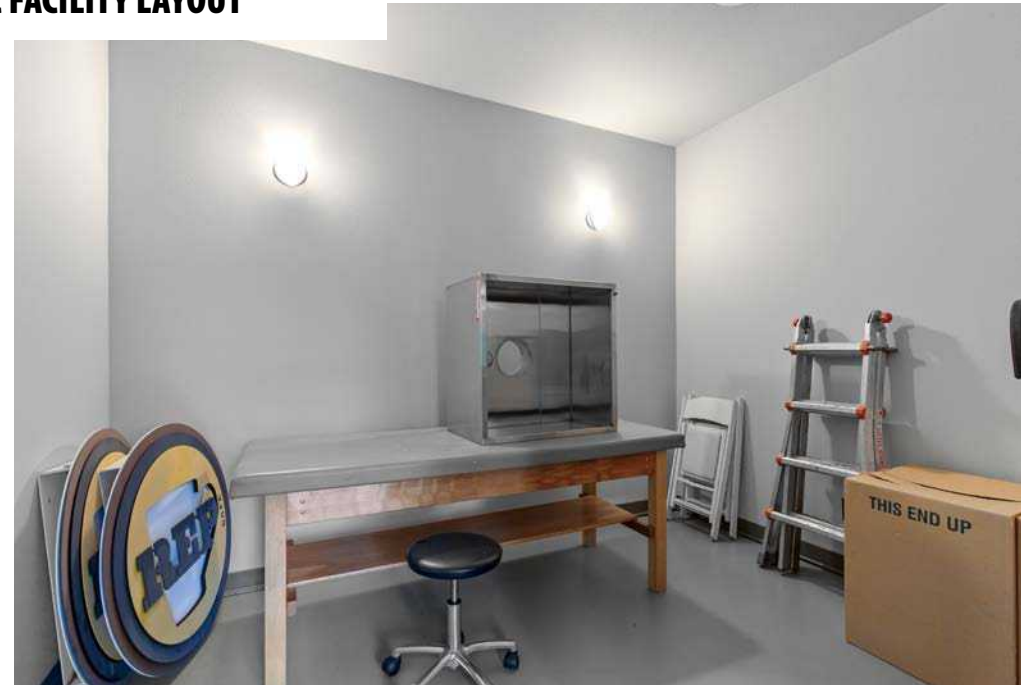
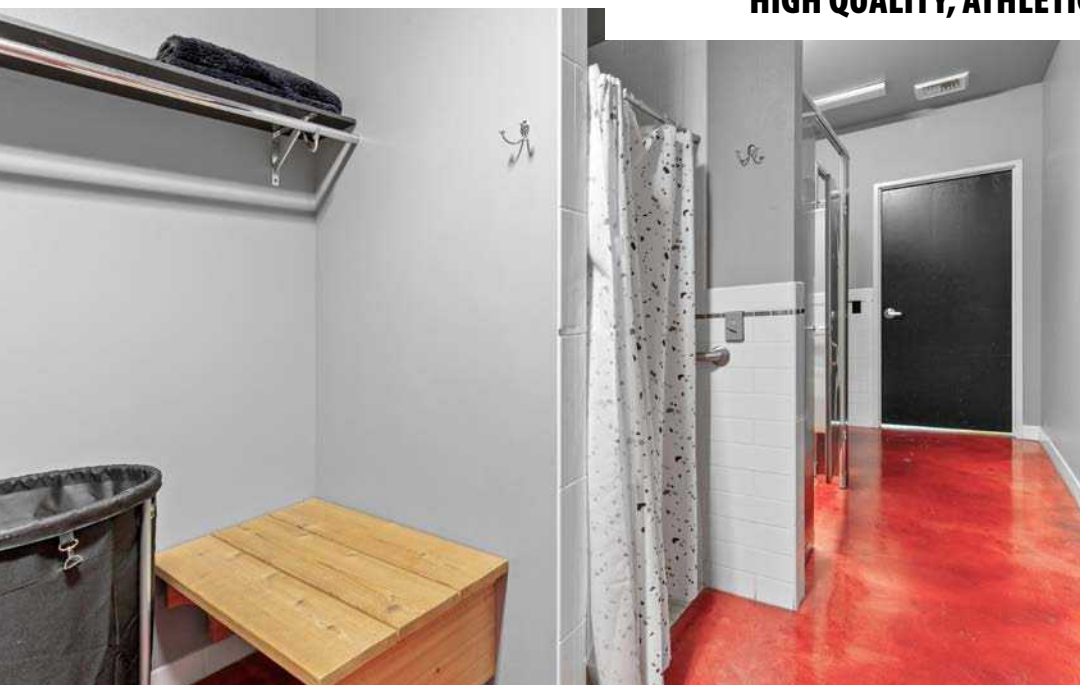


UPDATED: 4.8.2025

TOKCOMMERCIAL.COM



HIGH QUALITY, ATHLETIC FACILITY LAYOUT



PREMIER YOGA/FITNESS LOCATION

TOK
COMMERCIAL



14,586 VPD

SELTICE WAY

SITE

SPOKANE RIVER

GRANDMILL LN

SELTICE MEDICAL BUILDING

TOKCOMMERCIAL.COM

CONVENIENTLY LOCATED ALONG GROWING SELTICE CORRIDOR

LESS THAN **1 MILE** TO **I-90**
3.5 MILES TO **DOWNTOWN**



SITE

SILVER LAKE MALL



NORTH IDAHO COLLEGE

DOWNTOWN COEUR D'ALENE

THE COEUR D'ALENE RESORT



CONVENIENTLY LOCATED ALONG GROWING SELTICE CORRIDOR

AMIDST MAIN COEUR D'ALENE
RETAIL CORRIDOR

SITE

US RTE 95 & APPLEWAY AVENUE



THE CROSSROADS



VILLAGE AT RIVERSTONE

