



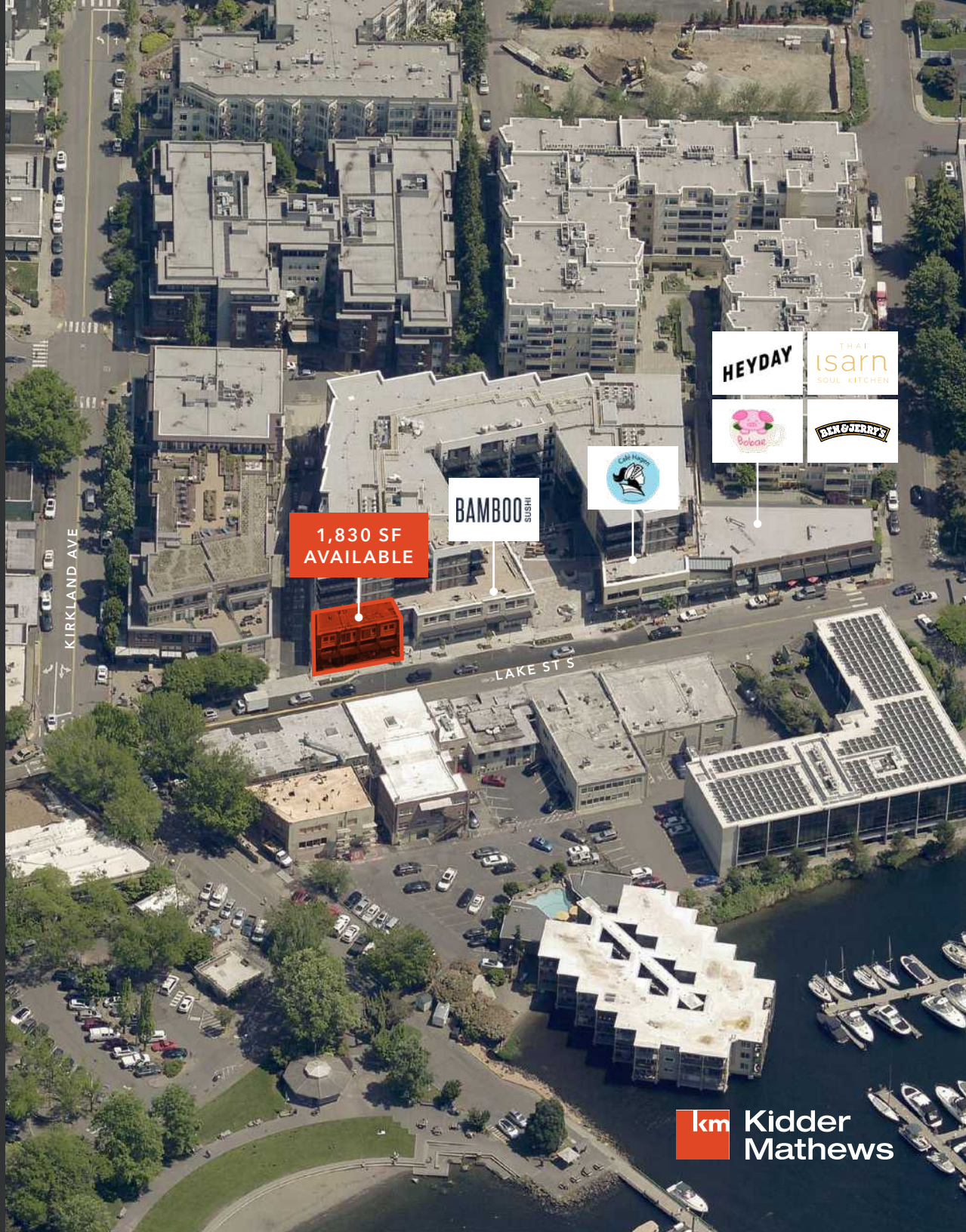
# VELA ON LAKE STREET

*1,830 SF Retail Space  
Available for Lease in  
Kirkland, WA*

120 LAKE ST S  
KIRKLAND, WA 98033

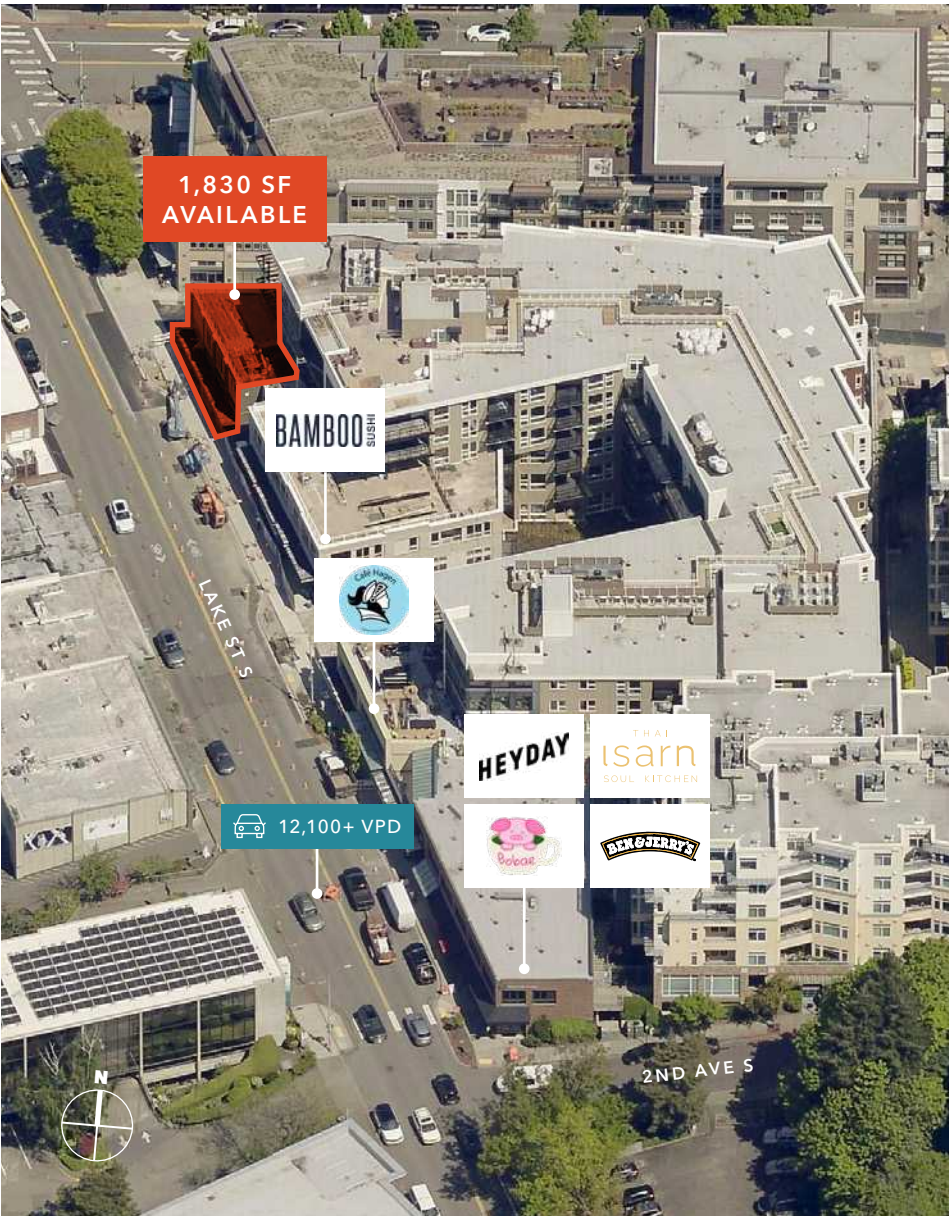
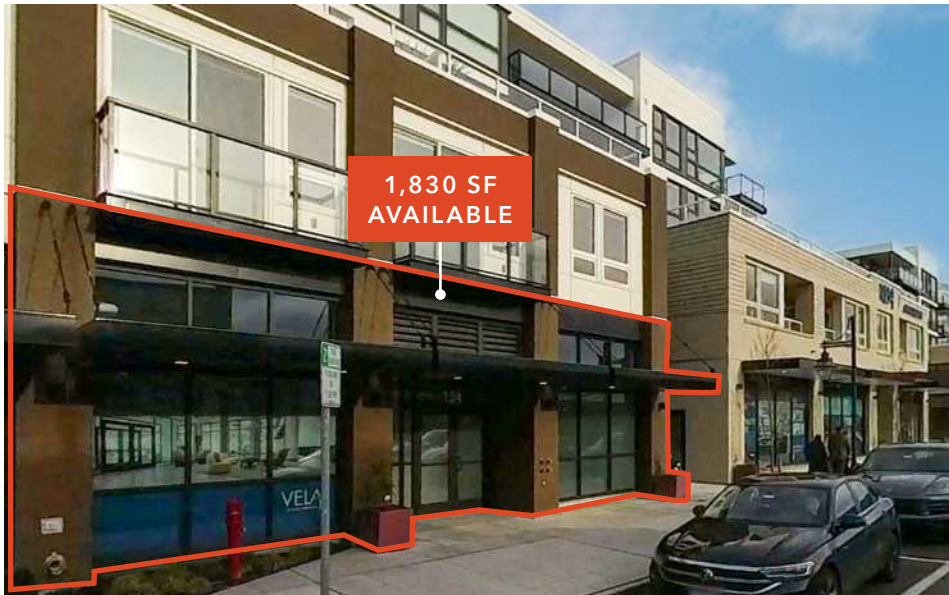
JOHN CHELICO  
206.398.2261  
john.chelico@kidder.com

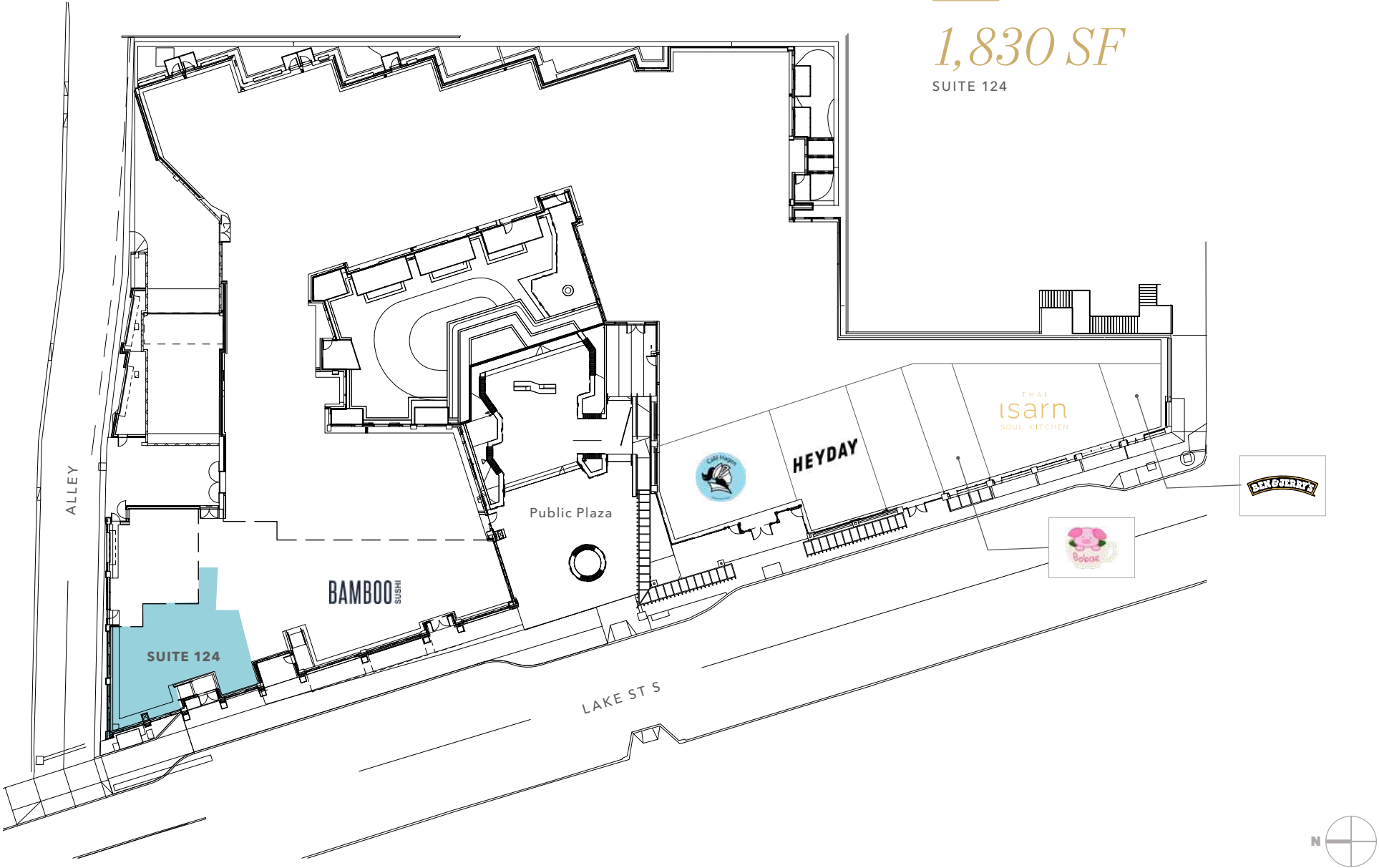
KIDDER.COM



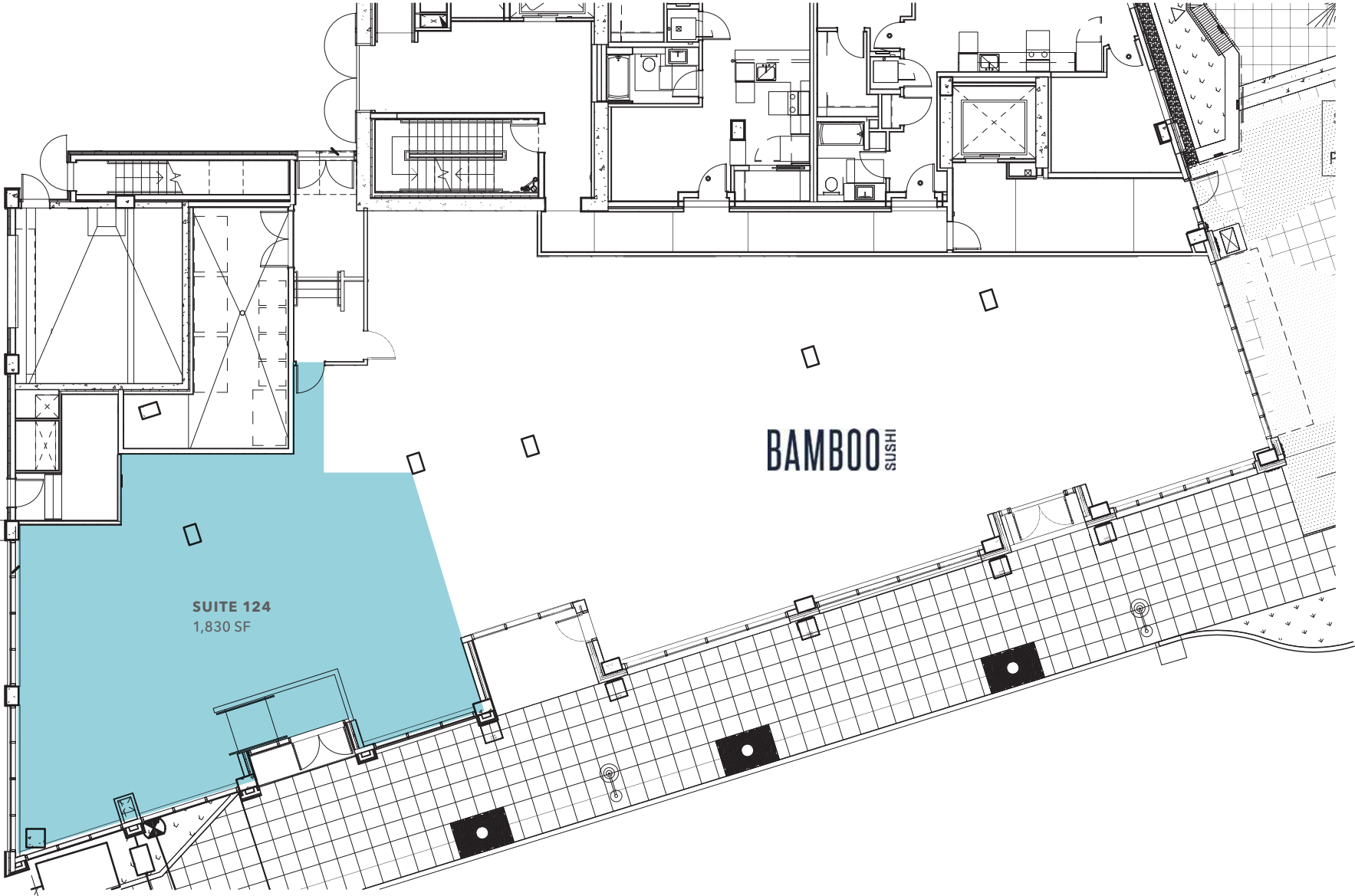


VELA ON LAKE STREET









# PRIME *LAKE STREET* LOCATION

Vela is a 5-story mixed use building consisting of 141 residential units, 13,098 SF retail space and 9,100 SF office space

Near the waterfront marina, Peter Kirk Park, and the corporate offices of Google and Tableau

Walking score of 87, very walkable

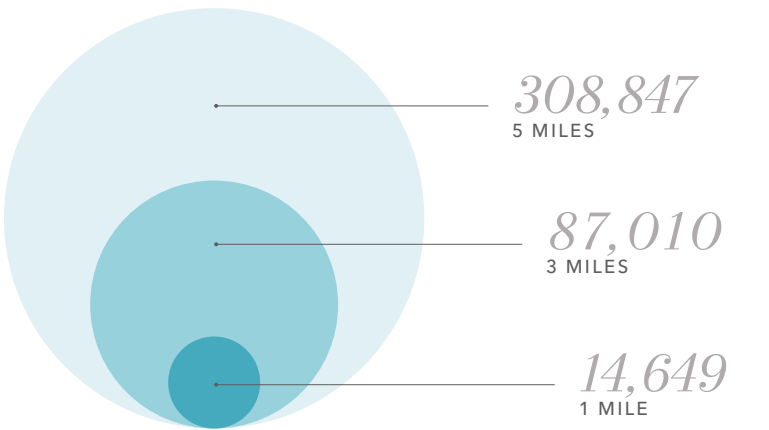
*5 MI*  
VELA TO BELLEVUE

*10 MI*  
VELA TO SEATTLE



DEMOGRAPHICS

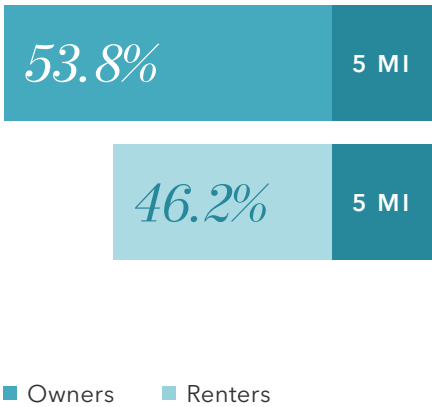
POPULATION



AVERAGE HH INCOME



HOME OWNERSHIP



POPULATION

	1 Mile	3 Miles	5 Miles
2023 TOTAL	14,649	87,010	308,847
2028 PROJECTION	16,617	93,914	333,397
2020 CENSUS	14,243	84,392	307,087
PROJECTED GROWTH 2023 - 2028	2.7%	1.6%	1.6%

HOUSEHOLDS

	1 Mile	3 Miles	5 Miles
2023 TOTAL	7,965	37,796	133,044
2028 PROJECTED	8,930	40,355	143,161
2020 CENSUS	7,209	35,990	126,197
GROWTH 2023 - 2028	2.4%	1.4%	1.5%
OWNER-OCCUPIED	54.7%	55.2%	53.8%
RENTER-OCCUPIED	45.3%	44.8%	46.2%

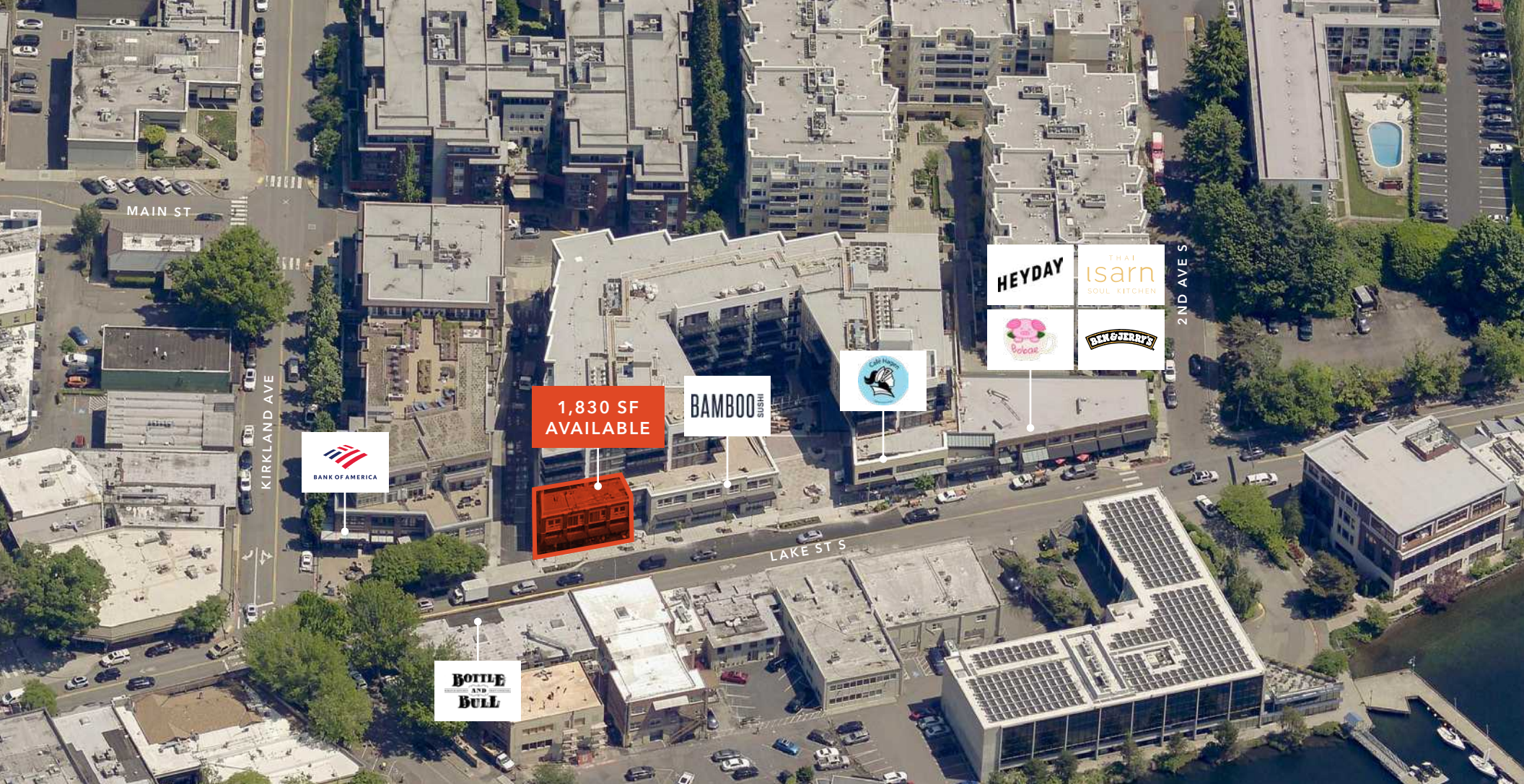
INCOME

	1 Mile	3 Miles	5 Miles
2023 AVERAGE HH INCOME	\$222,488	\$247,863	\$233,187
2028 PROJECTED HH INCOME	\$217,061	\$254,987	\$237,836
ANNUAL CHANGE 2023 - 2028	0.4%	0.6%	0.6%

EMPLOYMENT

	1 Mile	3 Miles	5 Miles
TOTAL BUSINESSES	1,534	5,884	22,122
TOTAL EMPLOYEES	9,434	47,380	183,181





## VELA ON LAKE STREET

*For more information on  
this property, please contact*

JOHN CHELICO  
206.398.2261  
john.chelico@kidder.com

[KIDDER.COM](http://KIDDER.COM)

This information supplied herein is from sources we deem reliable. It is provided without any representation, warranty, or guarantee, expressed or implied as to its accuracy. Prospective Buyer or Tenant should conduct an independent investigation and verification of all matters deemed to be material, including, but not limited to, statements of income and expenses. Consult your attorney, accountant, or other professional advisor.

