



## CONTACT



**DREW ULRICK, SIOR**  
509.606.5055  
drew@tokcommercial.com

## HIGHLIGHTS



Excellent Location Close to I-90  
Ample Paved Parking  
Pylon Signage Available

## DETAILS



SPACE	SIZE	RATE
Suite B	2,648 SF	\$16.00/SF, NNN

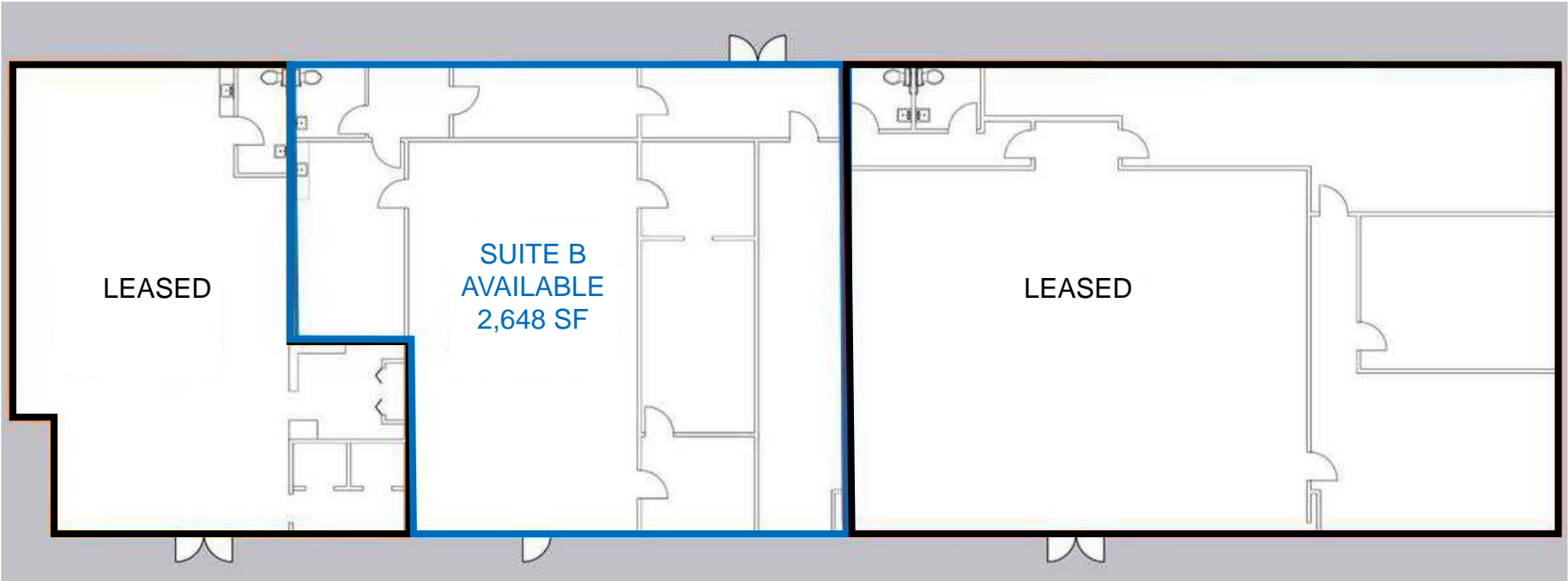
<b>BLDG TYPE</b>	Retail	<b>YEAR BUILT</b>	1986/1995
<b>BLDG SIZE</b>	8,346 SF	<b>LEASE TYPE</b>	NNN
<b>PARKING</b>	Ample		

UPDATED: 4.16.2025

THIS PROPERTY IS EXCLUSIVELY MARKETING BY TOK INLAND NORTHWEST LLC DBA TOK COMMERCIAL  
This information was obtained from sources believed reliable but cannot be guaranteed. Any opinions or estimates are used for example only.

SPACE	SIZE	RATE
Suite B	2,648 SF	\$16.00/SF, NNN

# FLOOR PLANS



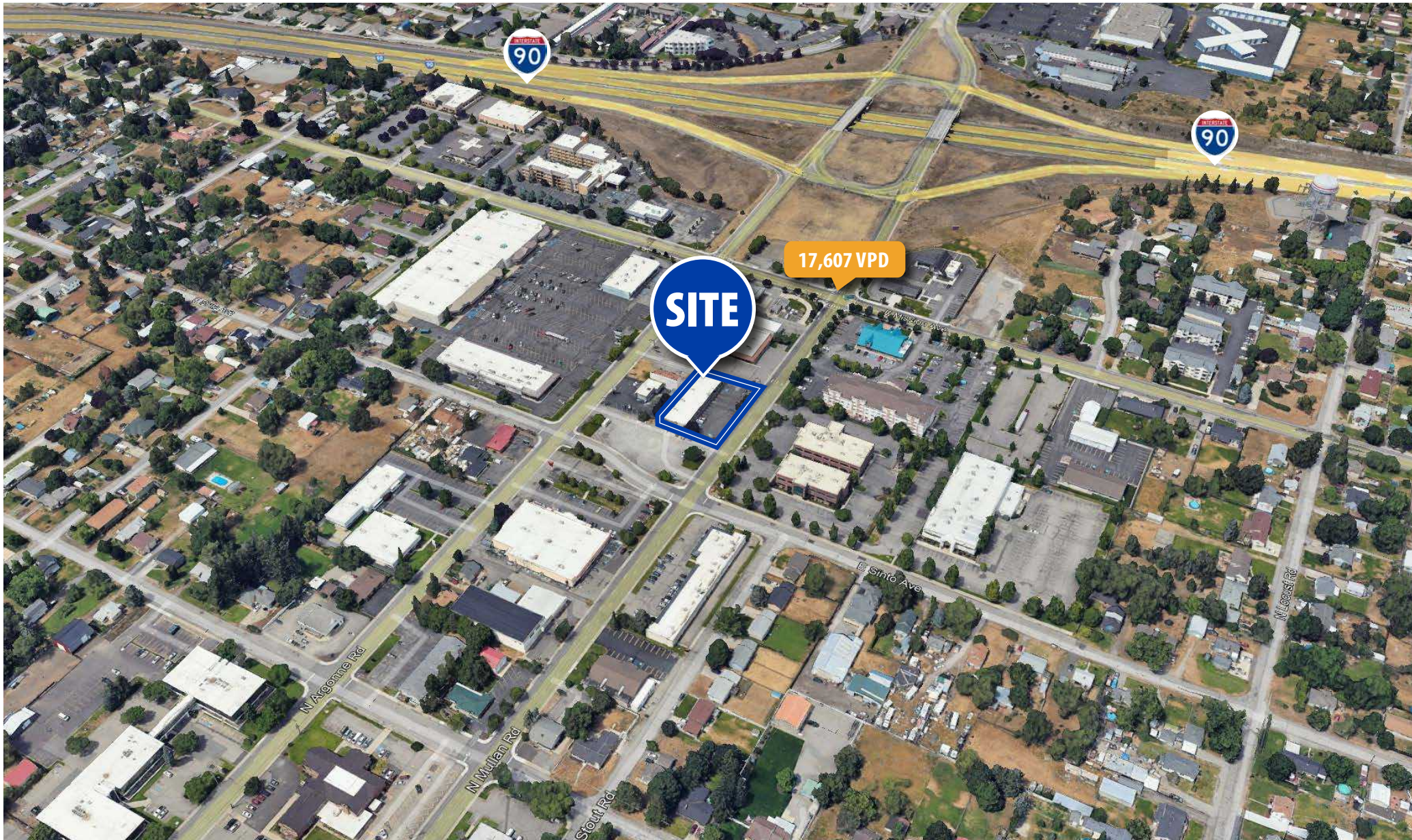






# SITE MAP

EASY ACCESS RETAIL LOCATION



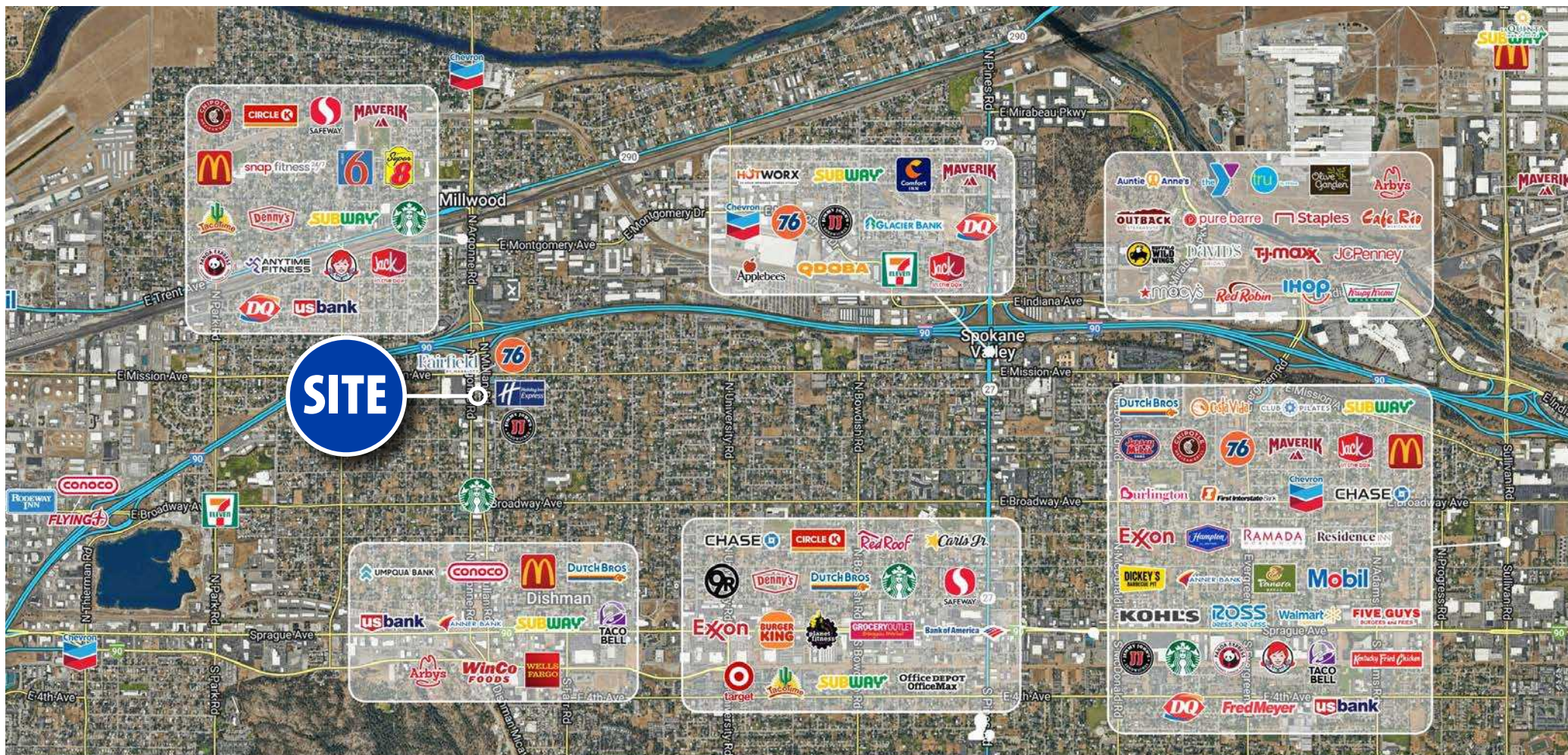
1421 N MULLAN RD

**TOX**COMMERCIAL.COM



# AERIAL MAP

## GREAT RETAIL SYNERGY



1 MILE RADIUS



POPULATION

**9,778**

1 MI. RADIUS



HISTORIC ANN. GROWTH

**0.7%**

1 MI. RADIUS



AVG. HOUSEHOLD INC.

**\$89,018**

1 MI. RADIUS



POPULATION

**66,121**

3 MI. RADIUS



HISTORIC ANN. GROWTH

**1.4%**

3 MI. RADIUS



AVG. HOUSEHOLD INC.

**\$90,440**

3 MI. RADIUS

5 MILE RADIUS



POPULATION

**154,239**

5 MI. RADIUS



HISTORIC ANN. GROWTH

**1.3%**

5 MI. RADIUS



AVG. HOUSEHOLD INC.

**\$98,919**

5 MI. RADIUS

1421 N MULLAN RD

TOXCOMMERCIAL.COM