

FOR LEASE

4 SOUTH IDAHO

*Located in close proximity to Seattle
CBD, Port of Seattle, and Georgetown*

4 SOUTH IDAHO ST | SEATTLE, WA



KIDDER.COM

km Kidder
Mathews



SUITE 102 HIGHLIGHTS

14,006 SF total

344 SF office

1 GL / 2 DH doors

20' clear height

Heavy power

Fully sprinklered

Zoned GI1 U/85

New roof system installed in 2019

Direct access to I-5, SR 99, and SR 509

Located in close proximity to Seattle CBD, Port of Seattle, and Georgetown

Available October 1, 2025

14K SF
TOTAL

344 SF
OFFICE

FIRST FLOOR



14,006 SF

AVAILABLE

344 SF

OFFICE

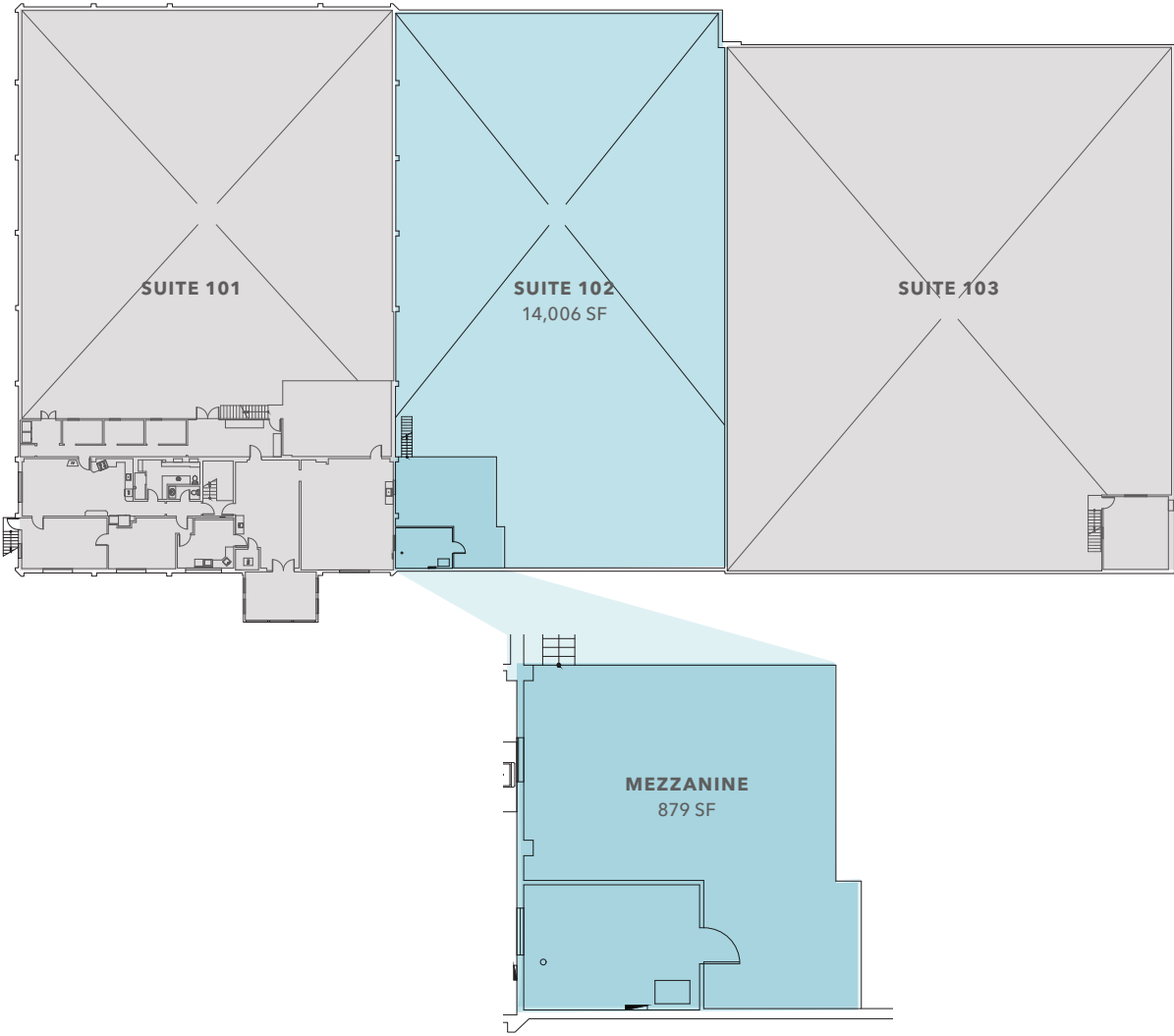
20'

CLEAR HEIGHT

△ DOCK-HIGH DOOR

▲ GRADE-LEVEL DOOR

SECOND FLOOR



SUITE 102

AVAILABLE

879 SF

MEZZANINE

HIGHLY- ACCESSIBLE LOCATION

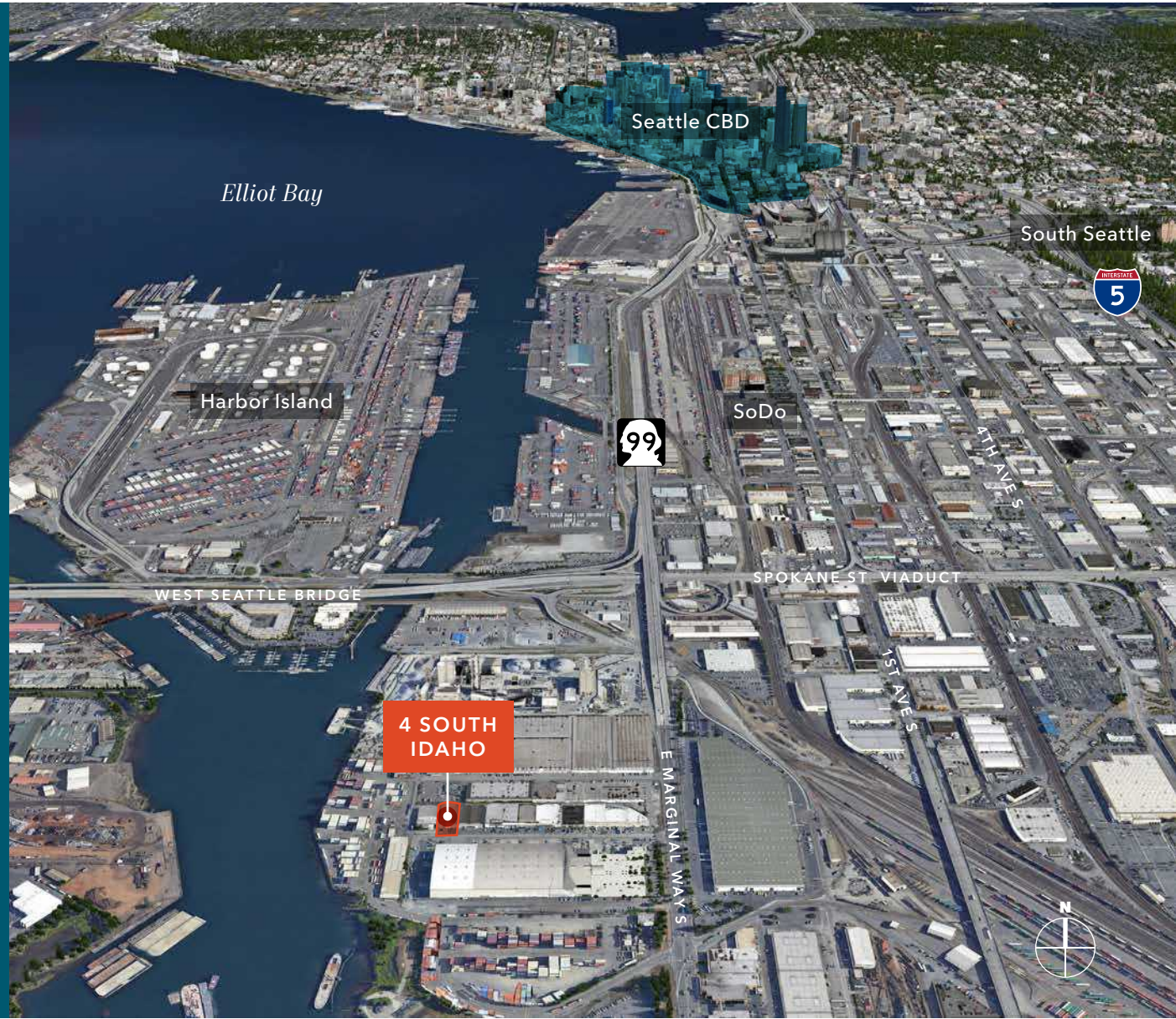
Close to Seattle CBD and Port of Seattle

Conveniently located near major
confluences Interstate 5, SR 99, and SR 509

Available October 1, 2025

9 MIN
SEATTLE CBD

10 MIN
PORT OF SEATTLE





4 SOUTH IDAHO

*For more information on
this property, please contact*

DANE DAHLINE
206.2486519
dane.dahline@kidder.com

ZACH VALL-SPINOSA
425.450.1115
zach.vallspinosa@kidder.com

[KIDDER.COM](https://www.kidder.com)

This information supplied herein is from sources we deem reliable. It is provided without any representation, warranty, or guarantee, expressed or implied as to its accuracy. Prospective Buyer or Tenant should conduct an independent investigation and verification of all matters deemed to be material, including, but not limited to, statements of income and expenses. Consult your attorney, accountant, or other professional advisor. All Kidder Mathews designs are the sole property of Kidder Mathews. Branded materials and layouts are not authorized for use by any other firm or person.

