



# WESTLAKE PLACE

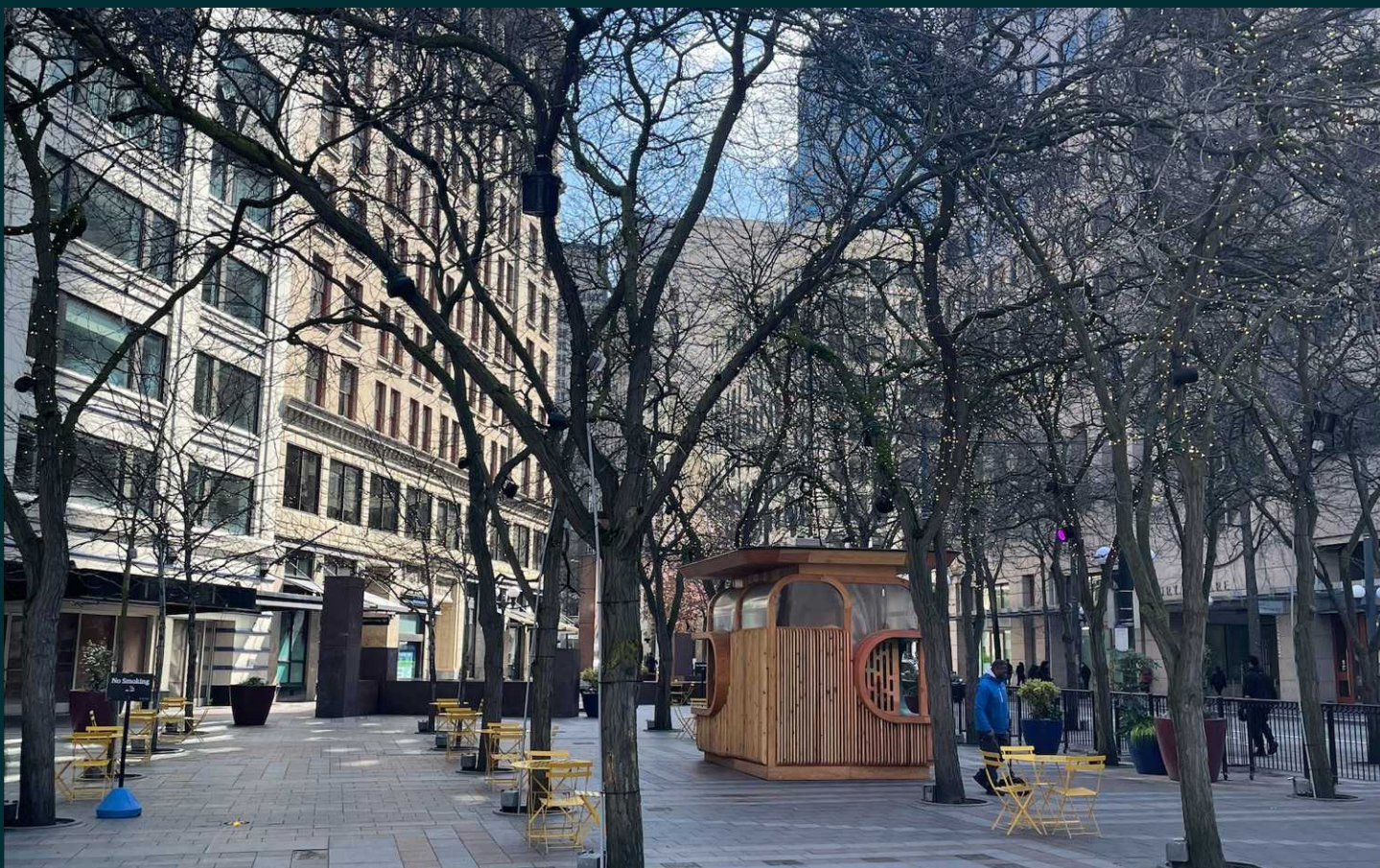
1516 - 1520 4th Avenue

SEATTLE | WA 98101

**CBRE**

4,644 - 9,327 SF | SUBLEASE | **\$15.00 PSF**





# PROPERTY OVERVIEW

- Prime location within Seattle's business, retail and tourism core
- Adjacent to Westlake Park
- Excellent connectivity with proximity to Westlake Station and Seattle Metro bus lines for easy access
- Daily rotation of food trucks within Westlake Park

**\$15.00 PSF**

**ASKING RATE**

**IMMEDIATE**

**AVAILABILITY**

**FULLY FURNISHED**

**99**

**WALK SCORE**

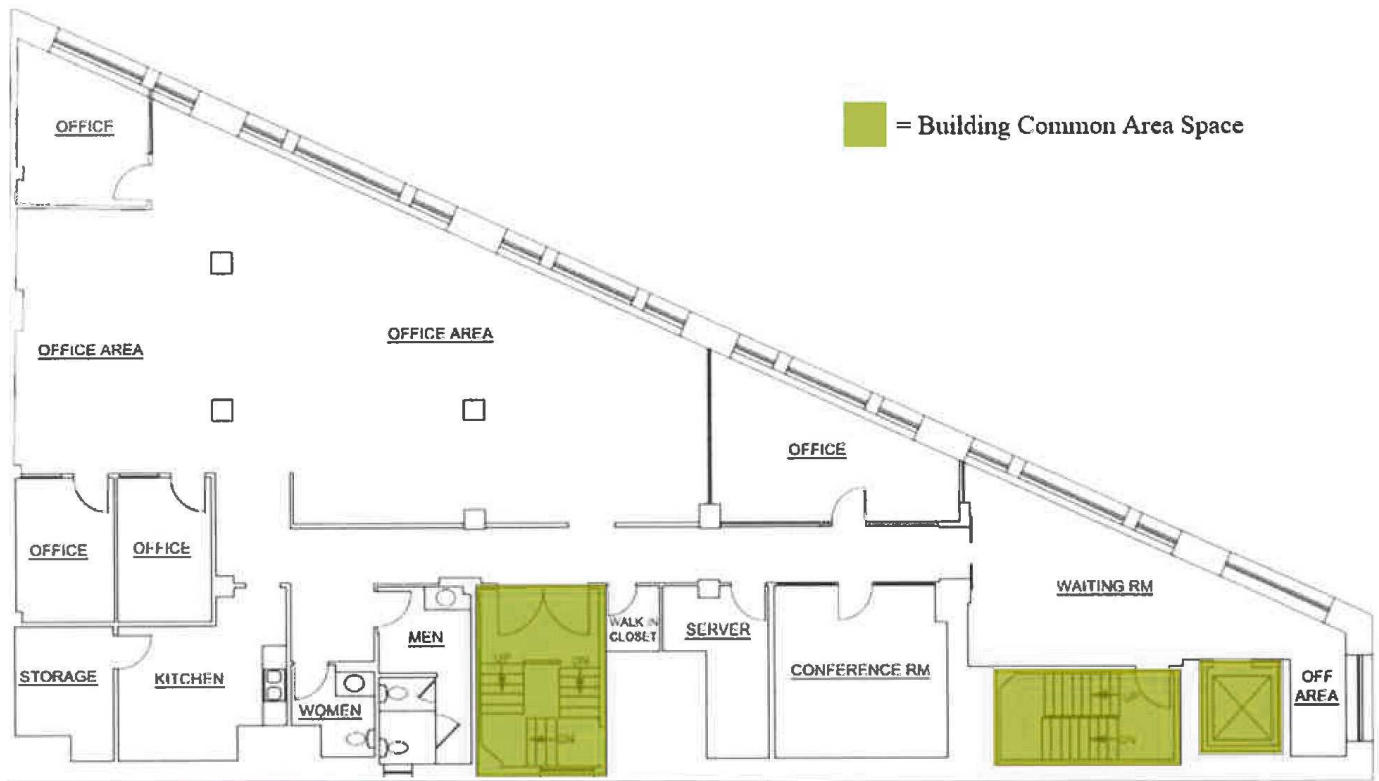
**100**

**TRANSIT SCORE**



# FLOOR PLAN

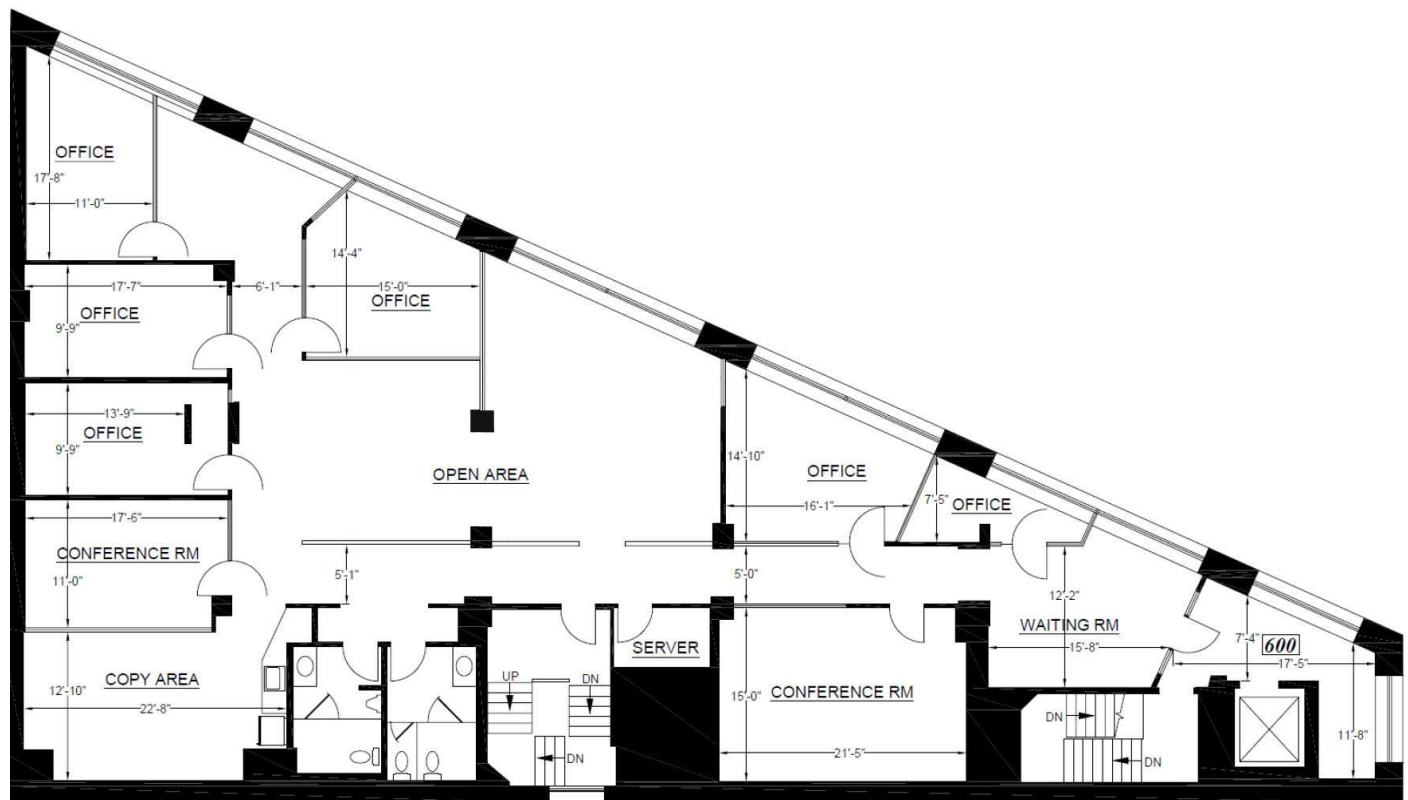
Suite 500



4,683 SF

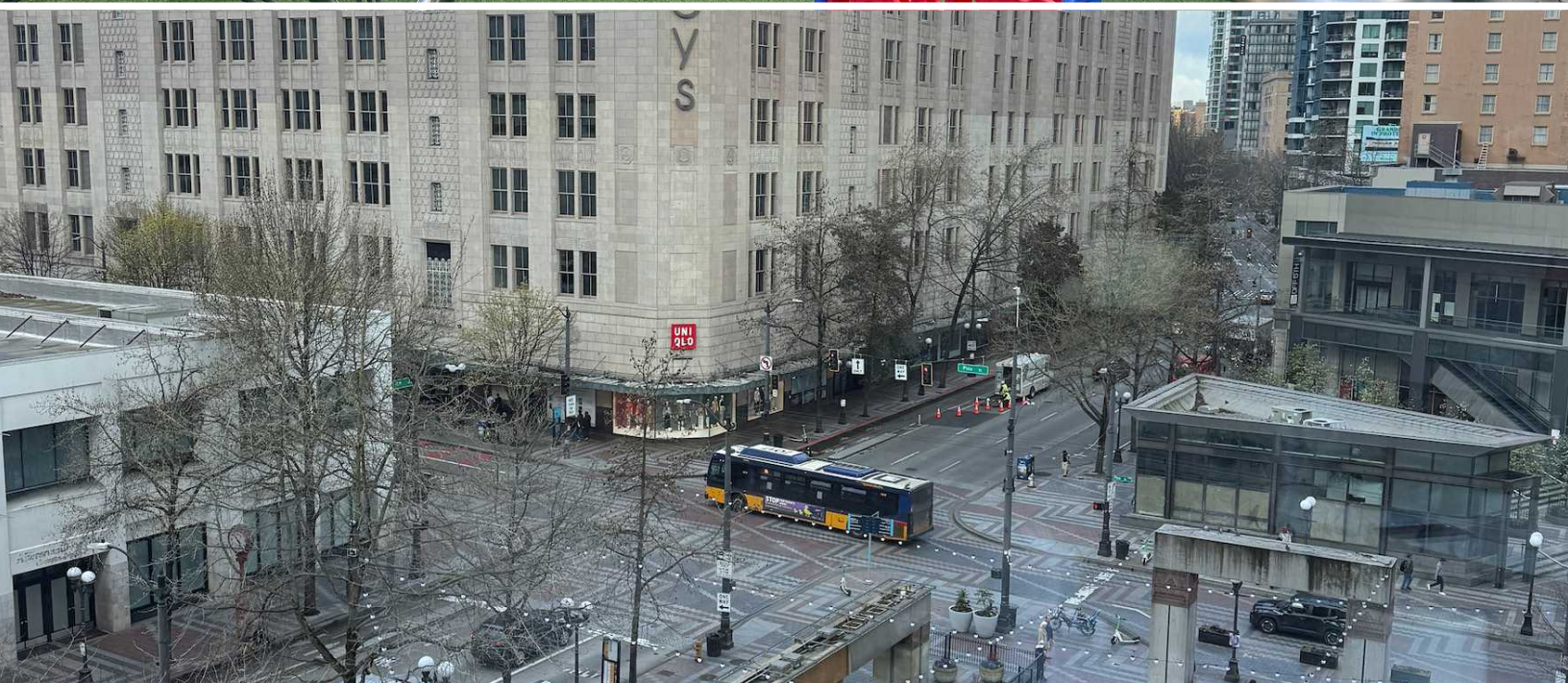
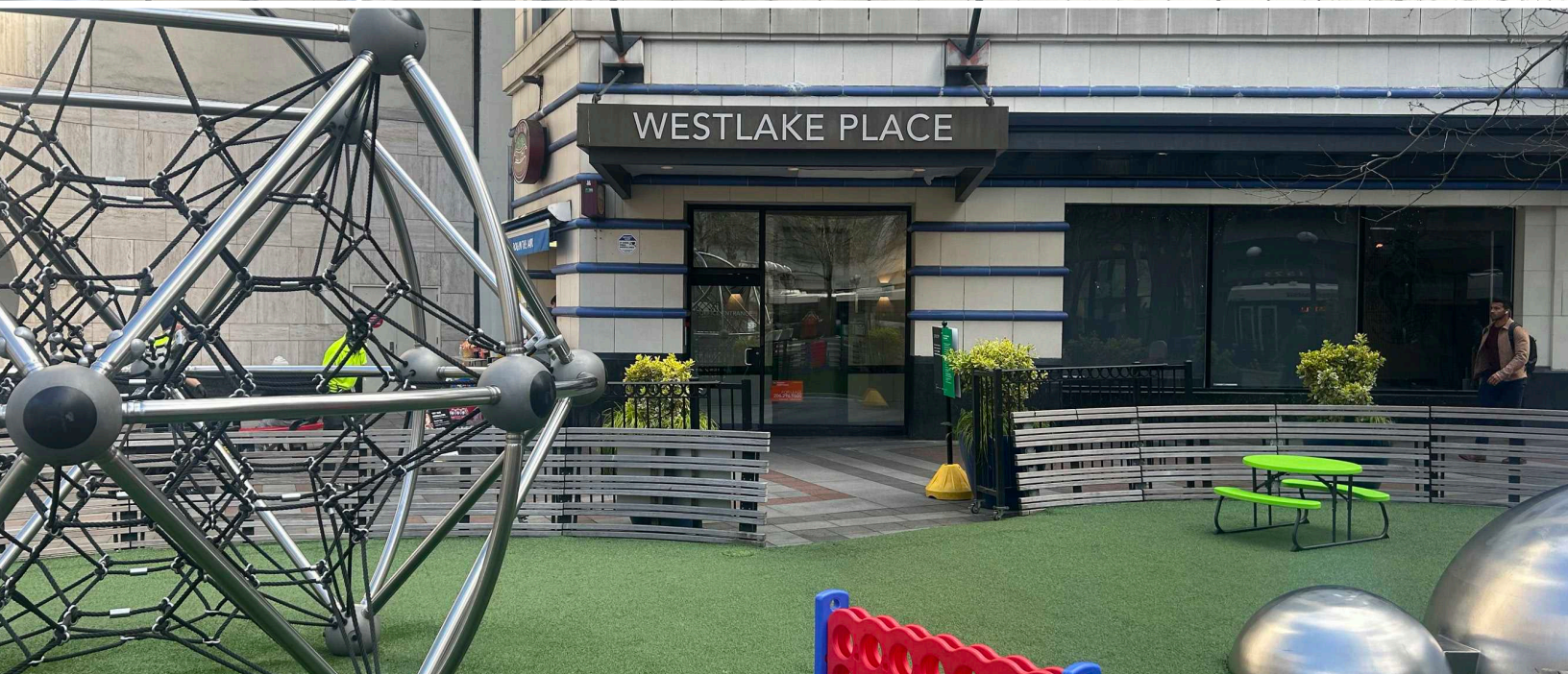
# FLOOR PLAN

Suite 600



4,644 SF

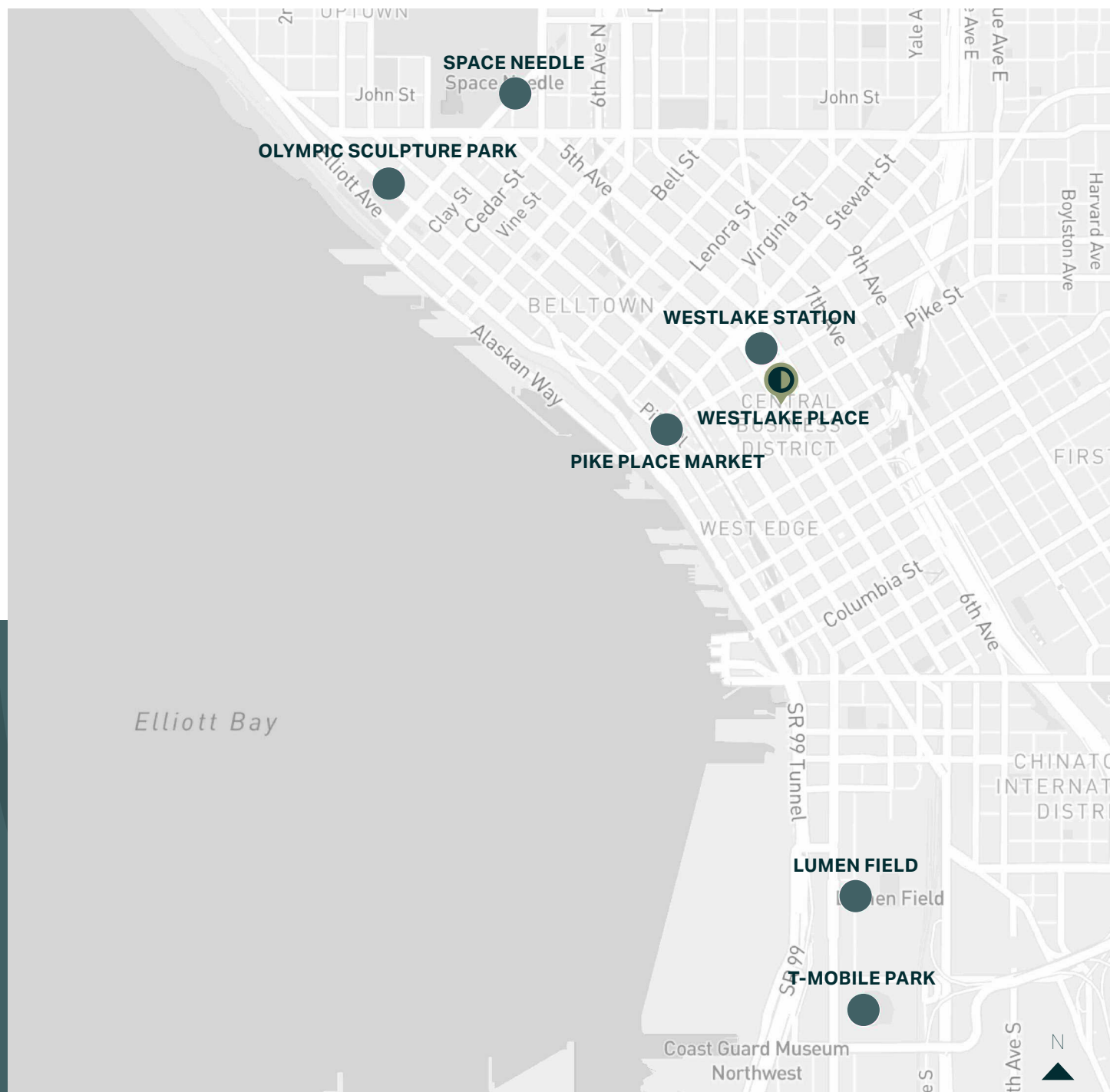






# AREA MAP

## Westlake Place



**7 MINUTES**  
DOWNTOWN SEATTLE

**8 MINUTES**  
SOUTH LAKE UNION

**10 MINUTES**  
LUMEN FIELD AND  
T-MOBILE PARK

**20 MINUTES**  
SEATAC AIRPORT



4,644-9,327 SF | SUBLEASE | **\$15.00PSF**

# WESTLAKE PLACE

**1516 - 1520 4th Avenue**

SEATTLE | WA 98101

**JOE RILEY**

First Vice President

+1 206 743 2432

joe.riley1@cbre.com

**TAYLOR OLSON**

Senior Associate

+1 206 330 1612

taylor.olson@cbre.com

**CBRE**

1420 5th Avenue

Suite 3800

Seattle, WA 98101



© 2025 CBRE, Inc. All rights reserved. This information has been obtained from sources believed reliable but has not been verified for accuracy or completeness. CBRE, Inc. makes no guarantee, representation or warranty and accepts no responsibility or liability as to the accuracy, completeness, or reliability of the information contained herein. You should conduct a careful, independent investigation of the property and verify all information. Any reliance on this information is solely at your own risk. CBRE and the CBRE logo are service marks of CBRE, Inc. All other marks displayed on this document are the property of their respective owners, and the use of such marks does not imply any affiliation with or endorsement of CBRE. Photos herein are the property of their respective owners. Use of these images without the express written consent of the owner is prohibited.